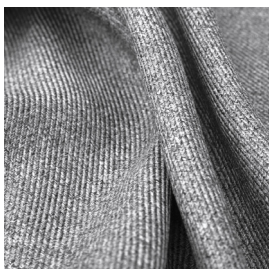


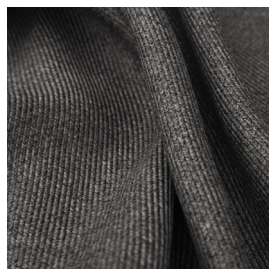
ROYAL F.R.



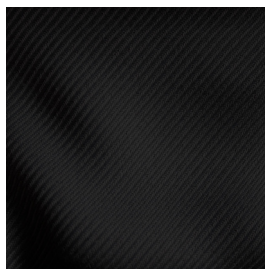
7119/03



7119/04



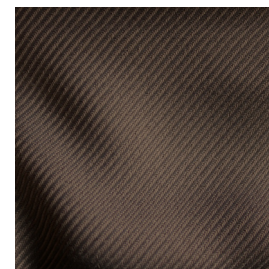
7119/05



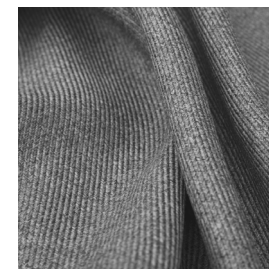
7119/07



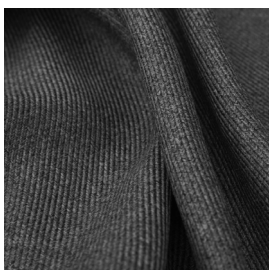
7119/08



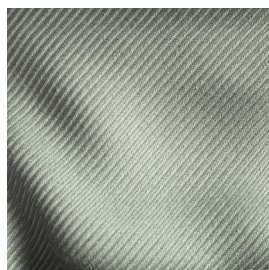
7119/11



7119/12



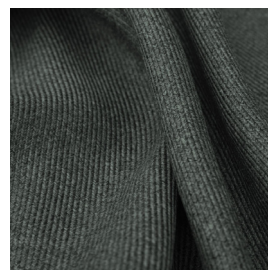
7119/13



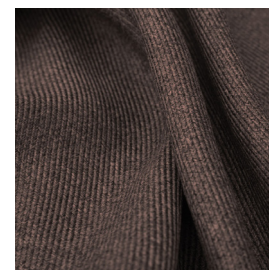
7119/14



7119/15



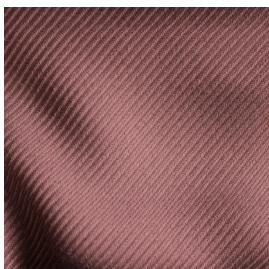
7119/17



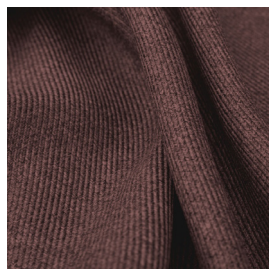
7119/18



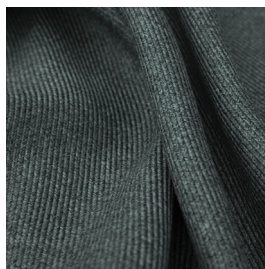
7119/19



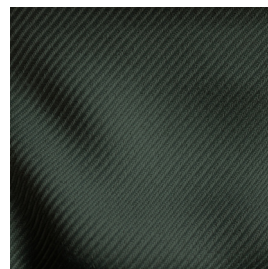
7119/20



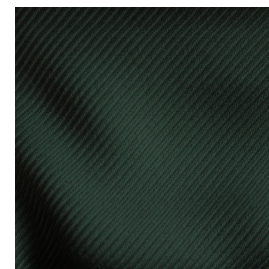
7119/23



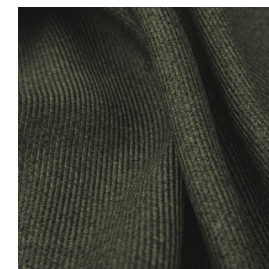
7119/25



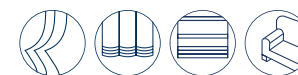
7119/27



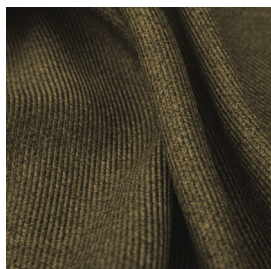
7119/28



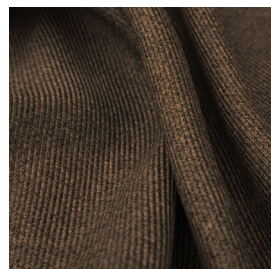
ROYAL F.R.



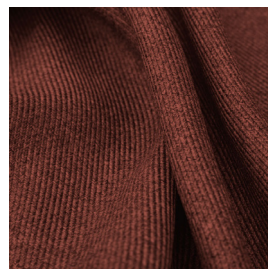
7119/29



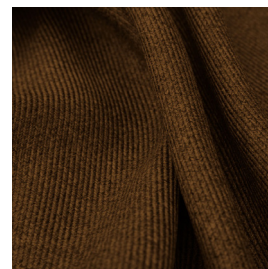
7119/31



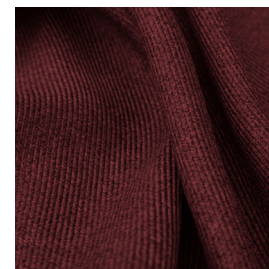
7119/32



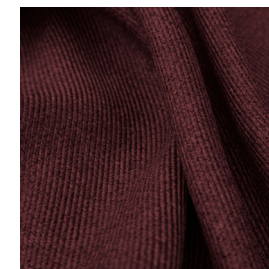
7119/33











7119/34



7119/35



Ref.	 cm	 Kg g/m ²							Categoria Prezzo	Aspetto
7119/03	300	266	100% PL FR	CLASS 1 (I), M1 (F), B1&B2 (D), IMO	No	Verticale - soffitto/pavimento	Medio peso	Imbottito	C	Unito
7119/04	300	266	100% PL FR	CLASS 1 (I), M1 (F), B1&B2 (D), IMO	No	Verticale - soffitto/pavimento	Medio peso	Imbottito	C	Unito
7119/05	300	266	100% PL FR	CLASS 1 (I), M1 (F), B1&B2 (D), IMO	No	Verticale - soffitto/pavimento	Medio peso	Imbottito	C	Unito
7119/07	300	266	100% PL FR	CLASS 1 (I), M1 (F), B1&B2 (D), IMO	No	Verticale - soffitto/pavimento	Medio peso	Imbottito	C	Unito
7119/08	300	266	100% PL FR	CLASS 1 (I), M1 (F), B1&B2 (D), IMO	No	Verticale - soffitto/pavimento	Medio peso	Imbottito	C	Unito
7119/11	300	266	100% PL FR	CLASS 1 (I), M1 (F), B1&B2 (D), IMO	No	Verticale - soffitto/pavimento	Medio peso	Imbottito	C	Unito
7119/12	300	266	100% PL FR	CLASS 1 (I), M1 (F), B1&B2 (D), IMO	No	Verticale - soffitto/pavimento	Medio peso	Imbottito	C	Unito
7119/13	300	266	100% PL FR	CLASS 1 (I), M1 (F), B1&B2 (D), IMO	No	Verticale - soffitto/pavimento	Medio peso	Imbottito	C	Unito
7119/14	300	266	100% PL FR	CLASS 1 (I), M1 (F), B1&B2 (D), IMO	No	Verticale - soffitto/pavimento	Medio peso	Imbottito	C	Unito

Tutti i coefficienti potrebbero avere una tolleranza di +/- 5%
 Attenzione: La tonalità dei colori può variare leggermente da lotto a lotto

ATELIER
1963
TESSUTI & SARTORIA



Larghezza



Ignifugo



Trasparenza



Piombato



Peso



Composizione











Imbottito



Cimosa

MANUTENZIONE

LAVARE IN ACQUA A 30°MAX, NO CANDEGGIO, NO TAMBURO, FERRO A 1, SÌ A SECCO, STENDERE APPESO. RITIRO AL PRIMO LAVAGGIO 0-2%. PER DATI SPECIFICI CONSULTARE LA SCHEDA PRODOTTO INDIVIDUALE IN ATELIER.

Ref.	 cm	 Kg g/m ²							Categoria Prezzo	Aspetto
7119/15	300	266	100% PL FR	CLASS 1 (I), M1 (F), B1&B2 (D), IMO	No	Verticale - soffitto/pavimento	Medio peso	Imbottito	C	Unito
7119/17	300	266	100% PL FR	CLASS 1 (I), M1 (F), B1&B2 (D), IMO	No	Verticale - soffitto/pavimento	Medio peso	Imbottito	C	Unito
7119/18	300	266	100% PL FR	CLASS 1 (I), M1 (F), B1&B2 (D), IMO	No	Verticale - soffitto/pavimento	Medio peso	Imbottito	C	Unito
7119/19	300	266	100% PL FR	CLASS 1 (I), M1 (F), B1&B2 (D), IMO	No	Verticale - soffitto/pavimento	Medio peso	Imbottito	C	Unito
7119/20	300	266	100% PL FR	CLASS 1 (I), M1 (F), B1&B2 (D), IMO	No	Verticale - soffitto/pavimento	Medio peso	Imbottito	C	Unito
7119/23	300	266	100% PL FR	CLASS 1 (I), M1 (F), B1&B2 (D), IMO	No	Verticale - soffitto/pavimento	Medio peso	Imbottito	C	Unito
7119/25	300	266	100% PL FR	CLASS 1 (I), M1 (F), B1&B2 (D), IMO	No	Verticale - soffitto/pavimento	Medio peso	Imbottito	C	Unito
7119/27	300	266	100% PL FR	CLASS 1 (I), M1 (F), B1&B2 (D), IMO	No	Verticale - soffitto/pavimento	Medio peso	Imbottito	C	Unito
7119/28	300	266	100% PL FR	CLASS 1 (I), M1 (F), B1&B2 (D), IMO	No	Verticale - soffitto/pavimento	Medio peso	Imbottito	C	Unito

Tutti i coefficienti potrebbero avere una tolleranza di +/- 5%
 Attenzione: La tonalità dei colori può variare leggermente da lotto a lotto

**ATELIER
1963**
TESSUTI & SARTORIA



Larghezza



Ignifugo



Trasparenza



Piombato



Peso



Composizione











Imbottito



Cimosa

MANUTENZIONE

LAVARE IN ACQUA A 30°MAX, NO CANDEGGIO, NO TAMBURO, FERRO A 1, SÌ A SECCO, STENDERE APPESO. RITIRO AL PRIMO LAVAGGIO 0-2%. PER DATI SPECIFICI CONSULTARE LA SCHEDA PRODOTTO INDIVIDUALE IN ATELIER.

Ref.	 cm	 g/m ²							Categoria Prezzo	Aspetto
7119/29	300	266	100% PL FR	CLASS 1 (I), M1 (F), B1&B2 (D), IMO	No	Verticale - soffitto/pavimento	Medio peso	Imbottito	C	Unito
7119/31	300	266	100% PL FR	CLASS 1 (I), M1 (F), B1&B2 (D), IMO	No	Verticale - soffitto/pavimento	Medio peso	Imbottito	C	Unito
7119/32	300	266	100% PL FR	CLASS 1 (I), M1 (F), B1&B2 (D), IMO	No	Verticale - soffitto/pavimento	Medio peso	Imbottito	C	Unito
7119/33	300	266	100% PL FR	CLASS 1 (I), M1 (F), B1&B2 (D), IMO	No	Verticale - soffitto/pavimento	Medio peso	Imbottito	C	Unito
7119/34	300	266	100% PL FR	CLASS 1 (I), M1 (F), B1&B2 (D), IMO	No	Verticale - soffitto/pavimento	Medio peso	Imbottito	C	Unito
7119/35	300	266	100% PL FR	CLASS 1 (I), M1 (F), B1&B2 (D), IMO	No	Verticale - soffitto/pavimento	Medio peso	Imbottito	C	Unito

Tutti i coefficienti potrebbero avere una tolleranza di +/- 5%
 Attenzione: La tonalità dei colori può variare leggermente da lotto a lotto

ATELIER
1963
TESSUTI & SARTORIA



Larghezza



Ignifugo



Trasparenza



Piombato



Peso



Composizione



Imbottito



Cimosa

MANUTENZIONE

LAVARE IN ACQUA A 30°MAX, NO CANDEGGIO, NO TAMBURO, FERRO A 1, SÌ A SECCO, STENDERE APPESO. RITIRO AL PRIMO LAVAGGIO 0-2%. PER DATI SPECIFICI CONSULTARE LA SCHEDA PRODOTTO INDIVIDUALE IN ATELIER.