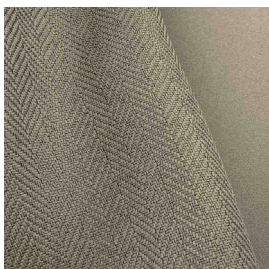


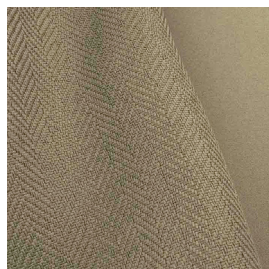
POSITANO F.R.



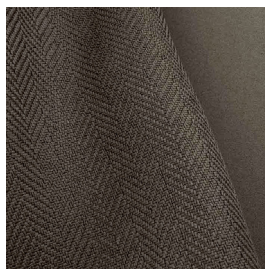
7104/03



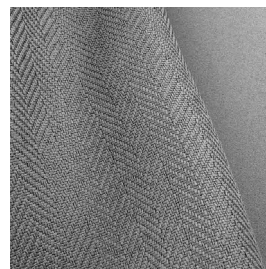
7104/04



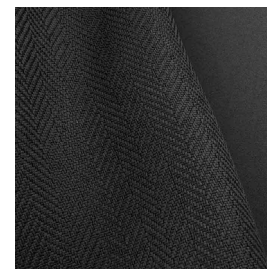
7104/05



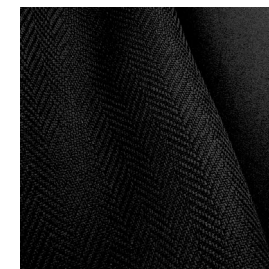
7104/07



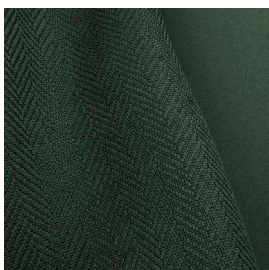
7104/08



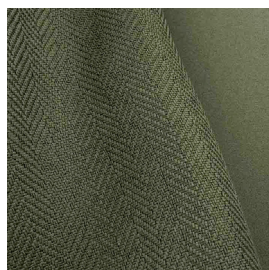
7104/09



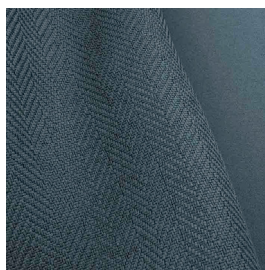
7104/11



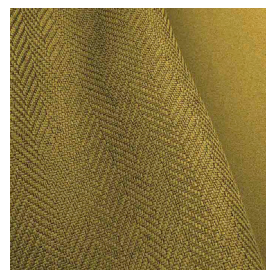
7104/12



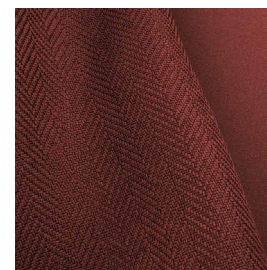
7104/15



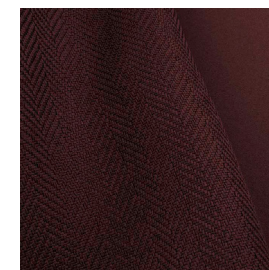
7104/17



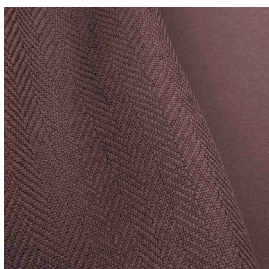
7104/20



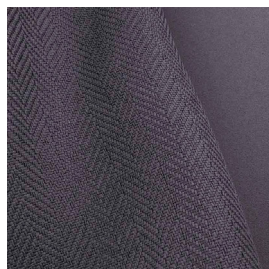
7104/21



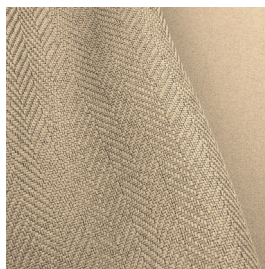
7104/22



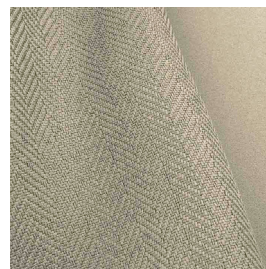
7104/23










7104/24



7104/25



Ref.	 cm	 Kg g/m ²						Categoria Prezzo	Aspetto
7104/03	300	302	100% PL F.R.	Class 1(I), M1 (F), B1&B2(D) BS 5867 (UK),EN 13773 (EU), IMO	No	Verticale - soffitto/ pavimento	Oscurante	D	Unito
7104/04	300	302	100% PL F.R.	Class 1(I), M1 (F), B1&B2(D) BS 5867 (UK),EN 13773 (EU), IMO	No	Verticale - soffitto/ pavimento	Oscurante	D	Unito
7104/05	300	302	100% PL F.R.	Class 1(I), M1 (F), B1&B2(D) BS 5867 (UK),EN 13773 (EU), IMO	No	Verticale - soffitto/ pavimento	Oscurante	D	Unito
7104/07	300	302	100% PL F.R.	Class 1(I), M1 (F), B1&B2(D) BS 5867 (UK),EN 13773 (EU), IMO	No	Verticale - soffitto/ pavimento	Oscurante	D	Unito
7104/08	300	302	100% PL F.R.	Class 1(I), M1 (F), B1&B2(D) BS 5867 (UK),EN 13773 (EU), IMO	No	Verticale - soffitto/ pavimento	Oscurante	D	Unito
7104/09	300	302	100% PL F.R.	Class 1(I), M1 (F), B1&B2(D) BS 5867 (UK),EN 13773 (EU), IMO	No	Verticale - soffitto/ pavimento	Oscurante	D	Unito
7104/11	300	302	100% PL F.R.	Class 1(I), M1 (F), B1&B2(D) BS 5867 (UK),EN 13773 (EU), IMO	No	Verticale - soffitto/ pavimento	Oscurante	D	Unito
7104/12	300	302	100% PL F.R.	Class 1(I), M1 (F), B1&B2(D) BS 5867 (UK),EN 13773 (EU), IMO	No	Verticale - soffitto/ pavimento	Oscurante	D	Unito
7104/15	300	302	100% PL F.R.	Class 1(I), M1 (F), B1&B2(D) BS 5867 (UK),EN 13773 (EU), IMO	No	Verticale - soffitto/ pavimento	Oscurante	D	Unito

Tutti i coefficienti potrebbero avere una tolleranza di +/- 5%
 Attenzione: La tonalità dei colori può variare leggermente da lotto a lotto

ATELIER
1963
 TESSUTI & SARTORIA



Larghezza



Ignifugo



Trasparenza



Piombato



Peso



Composizione










Imbottito



Cimosa

MANUTENZIONE

LAVARE IN ACQUA A 30°MAX, NO CANDEGGIO,
 NO TAMBURO, FERRO A 1, SÌ A SECCO, STENDE-
 RE APPESO. RITIRO AL PRIMO LAVAGGIO 0-2%.
 PER DATI SPECIFICI CONSULTARE LA SCHEDA
 PRODOTTO INDIVIDUALE IN ATELIER.

Ref.	 cm	 Kg g/m ²						Categoria Prezzo	Aspetto
7104/17	300	302	100% PL F.R.	Class 1(I), M1 (F), B1&B2(D) BS 5867 (UK),EN 13773 (EU), IMO	No	Verticale - soffitto/ pavimento	Oscurante	D	Unito
7104/20	300	302	100% PL F.R.	Class 1(I), M1 (F), B1&B2(D) BS 5867 (UK),EN 13773 (EU), IMO	No	Verticale - soffitto/ pavimento	Oscurante	D	Unito
7104/21	300	302	100% PL F.R.	Class 1(I), M1 (F), B1&B2(D) BS 5867 (UK),EN 13773 (EU), IMO	No	Verticale - soffitto/ pavimento	Oscurante	D	Unito
7104/22	300	302	100% PL F.R.	Class 1(I), M1 (F), B1&B2(D) BS 5867 (UK),EN 13773 (EU), IMO	No	Verticale - soffitto/ pavimento	Oscurante	D	Unito
7104/23	300	302	100% PL F.R.	Class 1(I), M1 (F), B1&B2(D) BS 5867 (UK),EN 13773 (EU), IMO	No	Verticale - soffitto/ pavimento	Oscurante	D	Unito
7104/24	300	302	100% PL F.R.	Class 1(I), M1 (F), B1&B2(D) BS 5867 (UK),EN 13773 (EU), IMO	No	Verticale - soffitto/ pavimento	Oscurante	D	Unito
7104/25	300	302	100% PL F.R.	Class 1(I), M1 (F), B1&B2(D) BS 5867 (UK),EN 13773 (EU), IMO	No	Verticale - soffitto/ pavimento	Oscurante	D	Unito

Tutti i coefficienti potrebbero avere una tolleranza di +/- 5%
Attenzione: La tonalità dei colori può variare leggermente da lotto a lotto

ATELIER
1963
TESSUTI & SARTORIA



Larghezza



Ignifugo



Trasparenza



Piombato



Peso



Composizione



Imbottito



Cimosa

MANUTENZIONE

LAVARE IN ACQUA A 30°MAX, NO CANDEGGIO, NO TAMBURO, FERRO A 1, SÌ A SECCO, STENDERE APPESO. RITIRO AL PRIMO LAVAGGIO 0-2%. PER DATI SPECIFICI CONSULTARE LA SCHEDA PRODOTTO INDIVIDUALE IN ATELIER.