

OLIMPO F.R.



7109/01



7109/02



7109/04



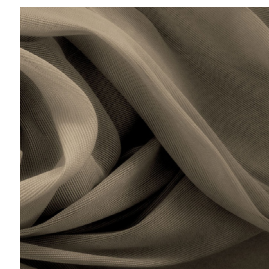
7109/05



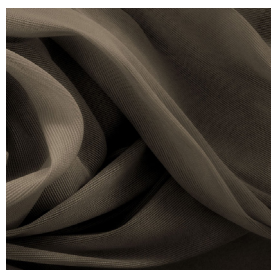
7109/06



7109/07



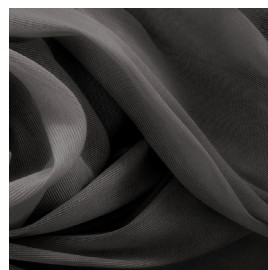
7109/08










7109/09



7109/11



Ref.	 cm	 g/m ²						Price category	Appearance
7109/01	305	191	100% PL FR	Class 1(I), M1 (F), B1&B2(D) BS 5867 (UK),EN 13773 (EU), IMO	Yes	Vertical ceiling/floor	Sheer	C	plain
7109/02	305	191	100% PL FR	Class 1(I), M1 (F), B1&B2(D) BS 5867 (UK),EN 13773 (EU), IMO	Yes	Vertical ceiling/floor	Sheer	C	plain
7109/04	305	191	100% PL FR	Class 1(I), M1 (F), B1&B2(D) BS 5867 (UK),EN 13773 (EU), IMO	Yes	Vertical ceiling/floor	Sheer	C	plain
7109/05	305	191	100% PL FR	Class 1(I), M1 (F), B1&B2(D) BS 5867 (UK),EN 13773 (EU), IMO	Yes	Vertical ceiling/floor	Sheer	C	plain
7109/06	305	191	100% PL FR	Class 1(I), M1 (F), B1&B2(D) BS 5867 (UK),EN 13773 (EU), IMO	Yes	Vertical ceiling/floor	Sheer	C	plain
7109/07	305	191	100% PL FR	Class 1(I), M1 (F), B1&B2(D) BS 5867 (UK),EN 13773 (EU), IMO	Yes	Vertical ceiling/floor	Sheer	C	plain
7109/08	305	191	100% PL FR	Class 1(I), M1 (F), B1&B2(D) BS 5867 (UK),EN 13773 (EU), IMO	Yes	Vertical ceiling/floor	Sheer	C	plain
7109/09	305	191	100% PL FR	Class 1(I), M1 (F), B1&B2(D) BS 5867 (UK),EN 13773 (EU), IMO	Yes	Vertical ceiling/floor	Sheer	C	plain
7109/11	305	191	100% PL FR	Class 1(I), M1 (F), B1&B2(D) BS 5867 (UK),EN 13773 (EU), IMO	Yes	Vertical ceiling/floor	Sheer	C	plain

All coefficients have a possible tolerance of +/- 5%
 Attention: colour shades may vary slightly from one dye-lot to another



Width



Flame retardant



Transparency



Leaded



Weight



Composition



Upholstery



Selvedge

MAINTENANCE

WASH IN MAX 30°, DO NOT BLEACH, DO NOT TUMBLE DRY, IRON ON LOW SETTING, CAN BE DRY CLEANED, DRIP DRY, SHRINKAGE AFTER FIRST WASH 0-2% FOR FURTHER INDICATIONS PLEASE CONSULT THE INDIVIDUAL PRODUCT SPECIFICATIONS IN THE ATELIER CATALOGUE.