



TESSUTI & SARTORIA

ATELIER 1963 - NETTUNO RECYCLED F.R.

MOTTURA

Nettuno Recycled F.R.



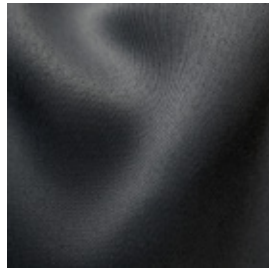
7120/01



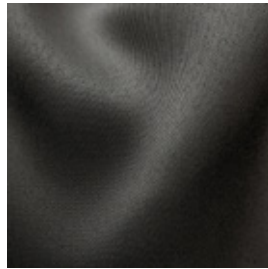
7120/02



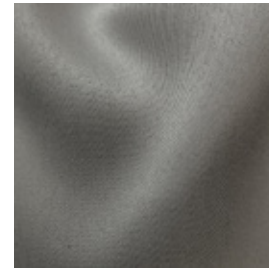
7120/03



7120/05



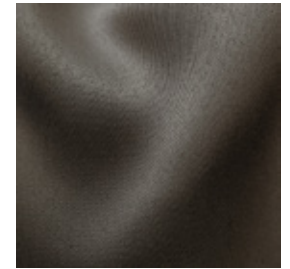
7120/06



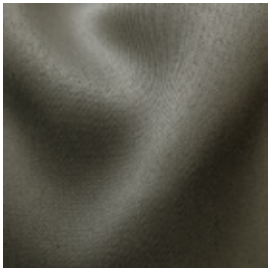
7120/07



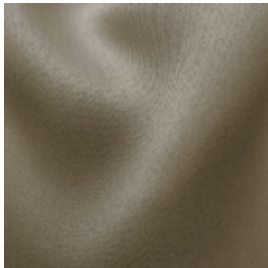
7120/10



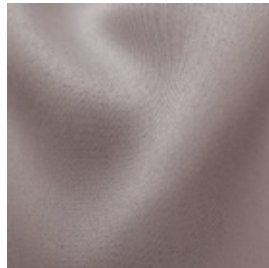
7120/11



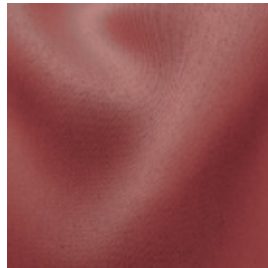
7120/13



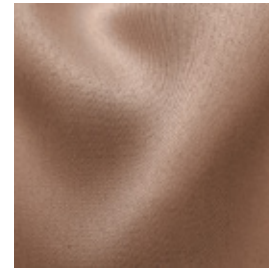
7120/14



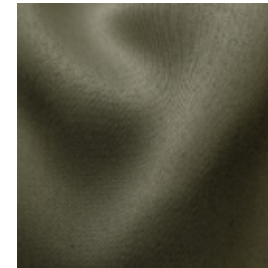
7120/16



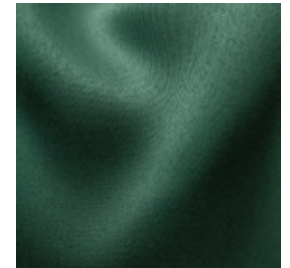
7120/17



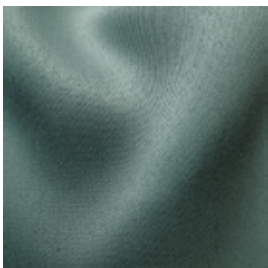
7120/19



7120/21



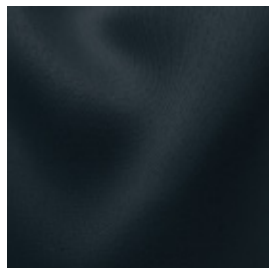
7120/22



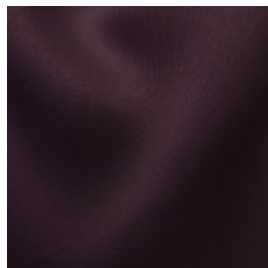
7120/23



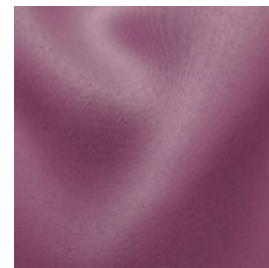
7120/24



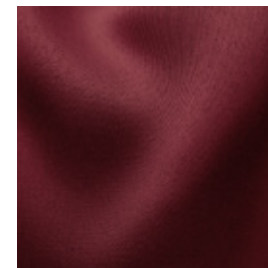
7120/25



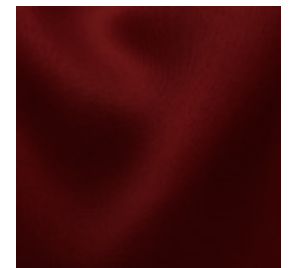
7120/26



7120/27



7120/28





TESSUTI & SARTORIA

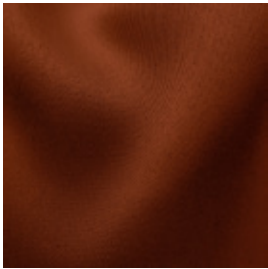
ATELIER 1963 - **NETTUNO RECYCLED F.R.**

MOTTURA

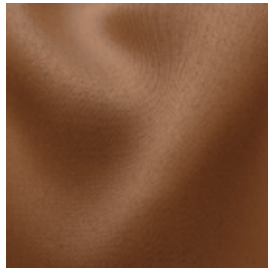
Nettuno Recycled F.R.



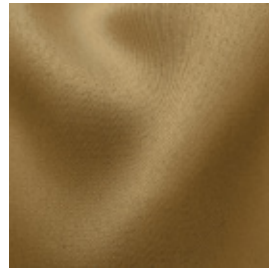
7120/29



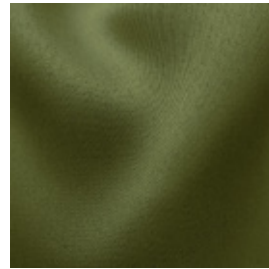
7120/30



7120/31



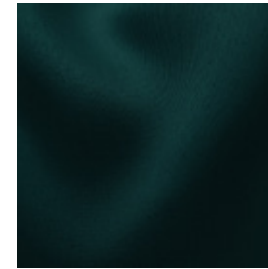
7120/32



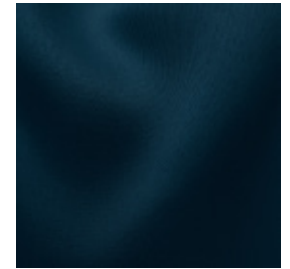
7120/33










7120/34






7120/35



Ref.	 cm	 g/m ²						Categoria Prezzo	Aspetto
7120/01	300	234	60% PL REC.FR 40% PL FR	CLASS 1 (I), M1 (F), B1&B2 (D), BS 5867 part2 type B&C; EN 13773;IMO	No	Verticale - soffitto/ pavimento	Oscurante	C	Unito
7120/02	300	234	60% PL REC.FR 40% PL FR	CLASS 1 (I), M1 (F), B1&B2 (D), BS 5867 part2 type B&C; EN 13773;IMO	No	Verticale - soffitto/ pavimento	Oscurante	C	Unito
7120/03	300	234	60% PL REC.FR 40% PL FR	CLASS 1 (I), M1 (F), B1&B2 (D), BS 5867 part2 type B&C; EN 13773;IMO	No	Verticale - soffitto/ pavimento	Oscurante	C	Unito
7120/05	300	234	60% PL REC.FR 40% PL FR	CLASS 1 (I), M1 (F), B1&B2 (D), BS 5867 part2 type B&C; EN 13773;IMO	No	Verticale - soffitto/ pavimento	Oscurante	C	Unito
7120/06	300	234	60% PL REC.FR 40% PL FR	CLASS 1 (I), M1 (F), B1&B2 (D), BS 5867 part2 type B&C; EN 13773;IMO	No	Verticale - soffitto/ pavimento	Oscurante	C	Unito
7120/07	300	234	60% PL REC.FR 40% PL FR	CLASS 1 (I), M1 (F), B1&B2 (D), BS 5867 part2 type B&C; EN 13773;IMO	No	Verticale - soffitto/ pavimento	Oscurante	C	Unito
7120/10	300	234	60% PL REC.FR 40% PL FR	CLASS 1 (I), M1 (F), B1&B2 (D), BS 5867 part2 type B&C; EN 13773;IMO	No	Verticale - soffitto/ pavimento	Oscurante	C	Unito
7120/11	300	234	60% PL REC.FR 40% PL FR	CLASS 1 (I), M1 (F), B1&B2 (D), BS 5867 part2 type B&C; EN 13773;IMO	No	Verticale - soffitto/ pavimento	Oscurante	C	Unito
7120/13	300	234	60% PL REC.FR 40% PL FR	CLASS 1 (I), M1 (F), B1&B2 (D), BS 5867 part2 type B&C; EN 13773;IMO	No	Verticale - soffitto/ pavimento	Oscurante	C	Unito
7120/14	300	234	60% PL REC.FR 40% PL FR	CLASS 1 (I), M1 (F), B1&B2 (D), BS 5867 part2 type B&C; EN 13773;IMO	No	Verticale - soffitto/ pavimento	Oscurante	C	Unito
7120/16	300	234	60% PL REC.FR 40% PL FR	CLASS 1 (I), M1 (F), B1&B2 (D), BS 5867 part2 type B&C; EN 13773;IMO	No	Verticale - soffitto/ pavimento	Oscurante	C	Unito
7120/17	300	234	60% PL REC.FR 40% PL FR	CLASS 1 (I), M1 (F), B1&B2 (D), BS 5867 part2 type B&C; EN 13773;IMO	No	Verticale - soffitto/ pavimento	Oscurante	C	Unito
7120/19	300	234	60% PL REC.FR 40% PL FR	CLASS 1 (I), M1 (F), B1&B2 (D), BS 5867 part2 type B&C; EN 13773;IMO	No	Verticale - soffitto/ pavimento	Oscurante	C	Unito
7120/21	300	234	60% PL REC.FR 40% PL FR	CLASS 1 (I), M1 (F), B1&B2 (D), BS 5867 part2 type B&C; EN 13773;IMO	No	Verticale - soffitto/ pavimento	Oscurante	C	Unito
7120/22	300	234	60% PL REC.FR 40% PL FR	CLASS 1 (I), M1 (F), B1&B2 (D), BS 5867 part2 type B&C; EN 13773;IMO	No	Verticale - soffitto/ pavimento	Oscurante	C	Unito
7120/23	300	234	60% PL REC.FR 40% PL FR	CLASS 1 (I), M1 (F), B1&B2 (D), BS 5867 part2 type B&C; EN 13773;IMO	No	Verticale - soffitto/ pavimento	Oscurante	C	Unito
7120/24	300	234	60% PL REC.FR 40% PL FR	CLASS 1 (I), M1 (F), B1&B2 (D), BS 5867 part2 type B&C; EN 13773;IMO	No	Verticale - soffitto/ pavimento	Oscurante	C	Unito

Tutti i coefficienti potrebbero avere una tolleranza di +/- 5%
 Attenzione: La tonalità dei colori può variare leggermente da lotto a lotto

Ref.	 cm	 g/m ²						Categoria Prezzo	Aspetto
7120/25	300	234	60% PL REC.FR 40% PL FR	CLASS 1 (I), M1 (F), B1&B2 (D), BS 5867 part2 type B&C; EN 13773;IMO	No	Verticale - soffitto/ pavimento	Oscurante	C	Unito
7120/26	300	234	60% PL REC.FR 40% PL FR	CLASS 1 (I), M1 (F), B1&B2 (D), BS 5867 part2 type B&C; EN 13773;IMO	No	Verticale - soffitto/ pavimento	Oscurante	C	Unito
7120/27	300	234	60% PL REC.FR 40% PL FR	CLASS 1 (I), M1 (F), B1&B2 (D), BS 5867 part2 type B&C; EN 13773;IMO	No	Verticale - soffitto/ pavimento	Oscurante	C	Unito
7120/28	300	234	60% PL REC.FR 40% PL FR	CLASS 1 (I), M1 (F), B1&B2 (D), BS 5867 part2 type B&C; EN 13773;IMO	No	Verticale - soffitto/ pavimento	Oscurante	C	Unito
7120/29	300	234	60% PL REC.FR 40% PL FR	CLASS 1 (I), M1 (F), B1&B2 (D), BS 5867 part2 type B&C; EN 13773;IMO	No	Verticale - soffitto/ pavimento	Oscurante	C	Unito
7120/30	300	234	60% PL REC.FR 40% PL FR	CLASS 1 (I), M1 (F), B1&B2 (D), BS 5867 part2 type B&C; EN 13773;IMO	No	Verticale - soffitto/ pavimento	Oscurante	C	Unito
7120/31	300	234	60% PL REC.FR 40% PL FR	CLASS 1 (I), M1 (F), B1&B2 (D), BS 5867 part2 type B&C; EN 13773;IMO	No	Verticale - soffitto/ pavimento	Oscurante	C	Unito
7120/32	300	234	60% PL REC.FR 40% PL FR	CLASS 1 (I), M1 (F), B1&B2 (D), BS 5867 part2 type B&C; EN 13773;IMO	No	Verticale - soffitto/ pavimento	Oscurante	C	Unito
7120/33	300	234	60% PL REC.FR 40% PL FR	CLASS 1 (I), M1 (F), B1&B2 (D), BS 5867 part2 type B&C; EN 13773;IMO	No	Verticale - soffitto/ pavimento	Oscurante	C	Unito
7120/34	300	234	60% PL REC.FR 40% PL FR	CLASS 1 (I), M1 (F), B1&B2 (D), BS 5867 part2 type B&C; EN 13773;IMO	No	Verticale - soffitto/ pavimento	Oscurante	C	Unito
7120/35	300	234	60% PL REC.FR 40% PL FR	CLASS 1 (I), M1 (F), B1&B2 (D), BS 5867 part2 type B&C; EN 13773;IMO	No	Verticale - soffitto/ pavimento	Oscurante	C	Unito

Tutti i coefficienti potrebbero avere una tolleranza di +/- 5%
 Attenzione: La tonalità dei colori può variare leggermente da lotto a lotto



TESSUTI & SARTORIA



Larghezza



Ignifugo



Trasparenza



Piombato



Peso



Composizione



Imbottito



Cimosa

MANUTENZIONE

LAVARE IN ACQUA A 30°MAX, NO CANDEGGIO,
 NO TAMBURO, FERRO A 1, SÌ A SECCO, STENDE-
 RE APPESO. RITIRO AL PRIMO LAVAGGIO 0-2%.
 PER DATI SPECIFICI CONSULTARE LA SCHEDA
 PRODOTTO INDIVIDUALE IN ATELIER.