



TESSUTI & SARTORIA

ATELIER 1963 - **MIRÒ F.R.**

*MIRÒ F.R.*

**MOTTURA**



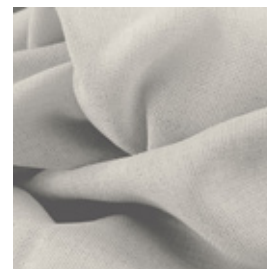
**7113/01**



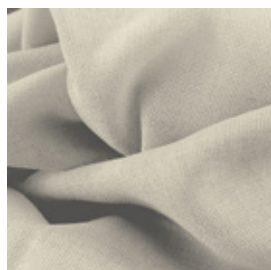
**7113/02**



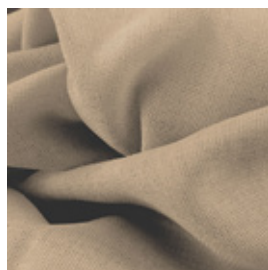
**7113/04**










**7113/05**



**7113/06**



Ref.	 cm	 g/m <sup>2</sup>						Price category	Appearance
7113/01	300	72	100% PL FR	Class 1(I), M1 (F), B1&B2(D) BS 5867 (UK), EN 13773 (EU), IMO	Yes	Vertical ceiling/floor	Sheer	B	plain
7113/02	300	72	100% PL FR	Class 1(I), M1 (F), B1&B2(D) BS 5867 (UK), EN 13773 (EU), IMO	Yes	Vertical ceiling/floor	Sheer	B	plain
7113/04	300	72	100% PL FR	Class 1(I), M1 (F), B1&B2(D) BS 5867 (UK), EN 13773 (EU), IMO	Yes	Vertical ceiling/floor	Sheer	B	plain
7113/05	300	72	100% PL FR	Class 1(I), M1 (F), B1&B2(D) BS 5867 (UK), EN 13773 (EU), IMO	Yes	Vertical ceiling/floor	Sheer	B	plain
7113/06	300	72	100% PL FR	Class 1(I), M1 (F), B1&B2(D) BS 5867 (UK), EN 13773 (EU), IMO	Yes	Vertical ceiling/floor	Sheer	B	plain

All coefficients have a possible tolerance of +/- 5%  
Attention: colour shades may vary slightly from one dye-lot to another



TESSUTI &amp; SARTORIA



Width



Weight



Flame retardant



Composition



Transparency



Upholstery



Leaded



Selvege

**MAINTENANCE**

WASH IN MAX 30°, DO NOT BLEACH, DO NOT TUMBLE DRY, IRON ON LOW SETTING, CAN BE DRY CLEANED, DRIP DRY, SHRINKAGE AFTER FIRST WASH 0-2% FOR FURTHER INDICATIONS PLEASE CONSULT THE INDIVIDUAL PRODUCT SPECIFICATIONS IN THE ATELIER CATALOGUE.