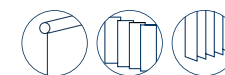


Luce F.R.



LU/001



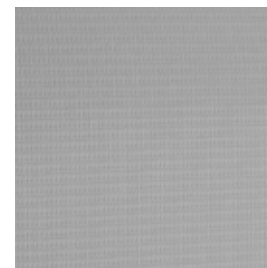
LU/002



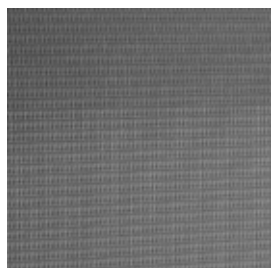
LU/003



LU/004



LU/005



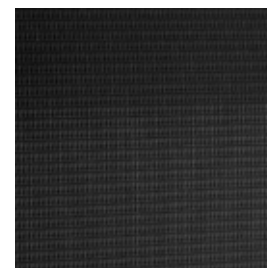
LU/006



LU/007
























LU/008



Name	Cat.	Ref.	Composition	F.R. classification	Health certifications	Width cm	Weight g/m ²	Thickness mm	OF %	Shading	TS %	RS %	AS %	TL %	RL %	INT Type C glass	EXT Type C glass	INT Type D glass	EXT Type D glass	Glare control	↓UV %	αw	Mechanical resistance WARP daN/5cm	Mechanical resistance WEFT daN/5cm	Colour fastness to light	OUTDOOR	Sealable
Reference Standard							UNI EN ISO 2286-2	UNI EN ISO 2286-3	UNI EN 14501	UNI EN 14501	UNI EN 14501	UNI EN 14501	UNI EN 14501	UNI EN 14501	UNI EN 14501	UNI EN 14501	UNI EN 14501	UNI EN 14501	UNI EN 14501	UNI EN 14501	UNI EN 14501	EN ISO 11654	UNI EN ISO 1421	UNI EN ISO 1421	UNI EN ISO 105 B02		

Luce F.R.	LU	LU/001	100% PL Trevira CS	Classe 1 (I),M1(F),B1(D)	OEKO-TEX REACH	300	150	0,30	5	○	51	43	6	52	47	0,49						88			5/6			
Luce F.R.	LU	LU/002	100% PL Trevira CS			300	150	0,30	5	○	44	49	7	44	53	0,46							89			5/6		
Luce F.R.	LU	LU/003	100% PL Trevira CS			300	150	0,30	5	○	37	49	14	34	50	0,45							87			5/6		
Luce F.R.	LU	LU/004	100% PL Trevira CS			300	150	0,30	5	○	42	45	13	36	44	0,47							89			5/6		
Luce F.R.	LU	LU/005	100% PL Trevira CS			300	150	0,30	5	○	31	33	36	12	15	0,53							92			5/6		
Luce F.R.	LU	LU/006	100% PL Trevira CS			300	150	0,30	5	○	29	31	40	9	13	0,53							94			5/6		
Luce F.R.	LU	LU/007	100% PL Trevira CS			300	150	0,30	5	○	25	31	44	3	7	0,52							97			5/6		
Luce F.R.	LU	LU/008	100% PL Trevira CS			300	150	0,30	5	○	23	26	51	3	3	0,55							96			5/6		

All coefficients have a possible tolerance of +/- 5%
 Attention: colour shades may vary slightly from one dye lot to another

 Width	 Composition	 Health certification	 IMO - Fabrics for marine industry	 Solar reflection	 Light absorption	 Sound absorption
 Thickness	 Flame retardant	 Colour fastness	 Openess factor	 Solar absorption	 G tot Type C - GLASS	 Warp - Weft N5 cm
 Weight	 Transparency	 Sealable	 Solar transmission	 Light transmission	 UV reduction	 Glare control

MAINTENANCE HANDLE THE FABRIC WITH CARE, USING CLEAN DRY HANDS. DO NOT USE SOLVENTS OR ANY ABRASIVE SUBSTANCES THAT MAY DAMAGE THE FABRIC. WHEN CLEANING WINDOWS THE BLIND MUST BE RAISED TO AVOID ANY DIRECT OR INDIRECT SPRAY OF CLEANING PRODUCTS. REMOVE THE DUST WITH A VACUUM CLEANER OR USING COMPRESSED AIR, AVOID PULLING OR STRETCHING FABRIC. ONLY FOR PVC COATED PRODUCTS, CLEAN WITH A DAMP CLOTH OR A SPONGE DIPPED IN SOAPY WATER IF NECESSARY. RINSE WITH CLEAN WATER. DO NOT RUB. LEAVE THE BLIND DOWN UNTIL COMPLETELY DRY.