

GIUNONE F.R.



7115/01



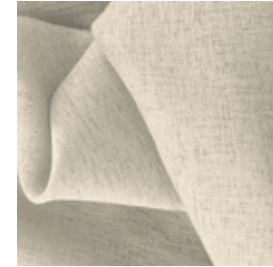
7115/02



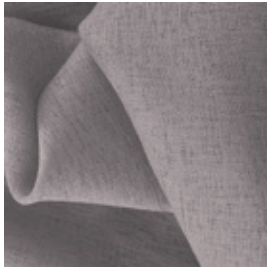
7115/03



7115/04



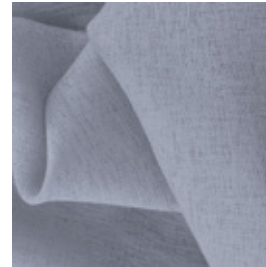
7115/06










7115/07



7115/08



Ref.	 cm	 g/m ²						Categoria Prezzo	Aspetto
7115/01	300	90	100% PL FR	Class 1(I), M1 (F), B1&B2(D) BS 5867 (UK),EN 13773 (EU), IMO	Si	Verticale - soffitto/ pavimento	Filtrante	C	Unito
7115/02	300	90	100% PL FR	Class 1(I), M1 (F), B1&B2(D) BS 5867 (UK),EN 13773 (EU), IMO	Si	Verticale - soffitto/ pavimento	Filtrante	C	Unito
7115/03	300	90	100% PL FR	Class 1(I), M1 (F), B1&B2(D) BS 5867 (UK),EN 13773 (EU), IMO	Si	Verticale - soffitto/ pavimento	Filtrante	C	Unito
7115/04	300	90	100% PL FR	Class 1(I), M1 (F), B1&B2(D) BS 5867 (UK),EN 13773 (EU), IMO	Si	Verticale - soffitto/ pavimento	Filtrante	C	Unito
7115/06	300	90	100% PL FR	Class 1(I), M1 (F), B1&B2(D) BS 5867 (UK),EN 13773 (EU), IMO	Si	Verticale - soffitto/ pavimento	Filtrante	C	Unito
7115/07	300	90	100% PL FR	Class 1(I), M1 (F), B1&B2(D) BS 5867 (UK),EN 13773 (EU), IMO	Si	Verticale - soffitto/ pavimento	Filtrante	C	Unito
7115/08	300	90	100% PL FR	Class 1(I), M1 (F), B1&B2(D) BS 5867 (UK),EN 13773 (EU), IMO	Si	Verticale - soffitto/ pavimento	Filtrante	C	Unito

Tutti i coefficienti potrebbero avere una tolleranza di +/- 5%
 Attenzione: La tonalità dei colori può variare leggermente da lotto a lotto



TESSUTI & SARTORIA



Larghezza



Ignifugo



Trasparenza



Piombato



Peso



Composizione



Imbottito



Cimosa

MANUTENZIONE

LAVARE IN ACQUA A 30°MAX, NO CANDEGGIO, NO TAMBURO, FERRO A 1, SÌ A SECCO, STENDERE APPESO. RITIRO AL PRIMO LAVAGGIO 0-2%. PER DATI SPECIFICI CONSULTARE LA SCHEDA PRODOTTO INDIVIDUALE IN ATELIER.