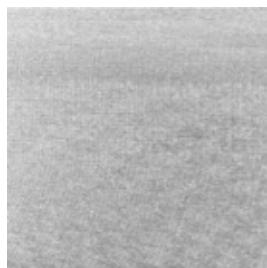


Galaxy 1 F.R.



TX/3725/11



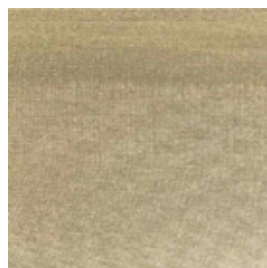
TX/3725/12



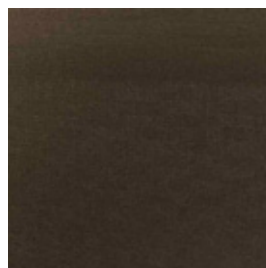
TX/3725/13



TX/3725/14



TX/3725/15



| Name | Cat. | Ref. | Composition | F.R. classification | Health certifications | Width cm | Weight g/m2 | Thickness mm | OF % | Shading | TS % | RS % | AS % | TL % | RL % | INT Type C glass | EXT Type C glass | INT Type D glass | EXT Type D glass | Glare control | ↓UV % | αw | Mechanical resistance WARP daN/5cm | Mechanical resistance WEFT daN/5cm | Colour fastness to light | OUTDOOR | Sealable |
|--------------------|------|------|-------------|---------------------|-----------------------|----------|-------------------|-------------------|--------------|--------------|--------------|--------------|--------------|--------------|--------------|------------------|------------------|------------------|------------------|---------------|--------------|--------------|------------------------------------|------------------------------------|--------------------------|---------|----------|
| Reference Standard | | | | | | | UNI EN ISO 2286-2 | UNI EN ISO 2286-3 | UNI EN 14501 | UNI EN 14501 | UNI EN 14501 | UNI EN 14501 | UNI EN 14501 | UNI EN 14501 | UNI EN 14501 | UNI EN 14501 | UNI EN 14501 | UNI EN 14501 | UNI EN 14501 | UNI EN 14501 | UNI EN 14501 | EN ISO 11654 | UNI EN ISO 1421 | UNI EN ISO 1421 | UNI EN ISO 105 B02 | | |

| | | | | | | | | | | | | | | | | | | | | | | | | | | | | |
|---------------|-----|------------|--------------------|---|----------|-----|-----|------|--|---|----|----|----|----|----|------|--|--|--|--|--|----|----|--|--|-----|-----|--|
| Galaxy 1 F.R. | GX1 | TX/3725/11 | 100% PL Trevira CS | Classe 1 (I), M1 (F), B1 (D) EN 13501-1 B-s1,d0 | OEKO-TEX | 240 | 120 | 0,22 | | ○ | 13 | 55 | 32 | 13 | 53 | 0,39 | | | | | | 88 | | | | 5/6 | | |
| Galaxy 1 F.R. | GX1 | TX/3725/12 | 100% PL Trevira CS | | | 240 | 120 | 0,22 | | ○ | 10 | 53 | 37 | 8 | 50 | 0,40 | | | | | | | 90 | | | | 5/6 | |
| Galaxy 1 F.R. | GX1 | TX/3725/13 | 100% PL Trevira CS | | | 240 | 120 | 0,22 | | ○ | 11 | 51 | 38 | 9 | 48 | 0,40 | | | | | | | 91 | | | | 5/6 | |
| Galaxy 1 F.R. | GX1 | TX/3725/14 | 100% PL Trevira CS | | | 240 | 120 | 0,22 | | ○ | 12 | 54 | 34 | 11 | 52 | 0,40 | | | | | | | 88 | | | | 5/6 | |
| Galaxy 1 F.R. | GX1 | TX/3725/15 | 100% PL Trevira CS | | | 240 | 120 | 0,22 | | ○ | 10 | 51 | 39 | 7 | 48 | 0,41 | | | | | | | 93 | | | | 5/6 | |

All coefficients have a possible tolerance of +/- 5%
 Attention: colour shades may vary slightly from one dye lot to another

| | | | | | | | | | | | | | |
|--|-----------|--|-----------------|--|----------------------|--|-----------------------------------|--|--------------------|--|----------------------|--|-------------------|
| | Width | | Composition | | Health certification | | IMO - Fabrics for marine industry | | Solar reflection | | Light absorption | | Sound absorption |
| | Thickness | | Flame retardant | | Colour fastness | | Openess factor | | Solar absorption | | G tot Type C - GLASS | | Warp - Weft N5 cm |
| | Weight | | Transparency | | Sealable | | Solar transmission | | Light transmission | | UV reduction | | Glare control |

MAINTENANCE HANDLE THE FABRIC WITH CARE, USING CLEAN DRY HANDS. DO NOT USE SOLVENTS OR ANY ABRASIVE SUBSTANCES THAT MAY DAMAGE THE FABRIC. WHEN CLEANING WINDOWS THE BLIND MUST BE RAISED TO AVOID ANY DIRECT OR INDIRECT SPRAY OF CLEANING PRODUCTS. REMOVE THE DUST WITH A VACUUM CLEANER OR USING COMPRESSED AIR, AVOID PULLING OR STRETCHING FABRIC. ONLY FOR PVC COATED PRODUCTS, CLEAN WITH A DAMP CLOTH OR A SPONGE DIPPED IN SOAPY WATER IF NECESSARY. RINSE WITH CLEAN WATER. DO NOT RUB. LEAVE THE BLIND DOWN UNTIL COMPLETELY DRY.