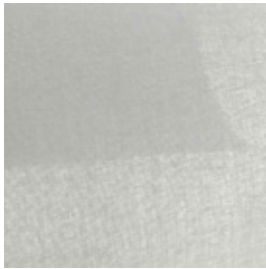


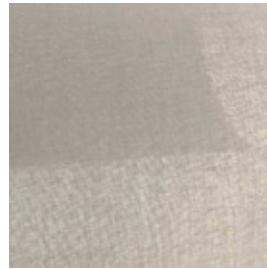
Astra F.R.



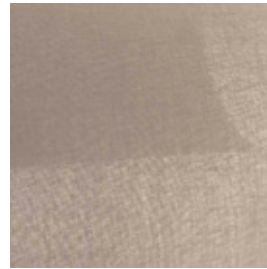
AST/01-300



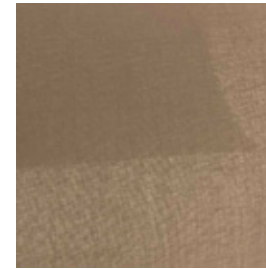
AST/02-300



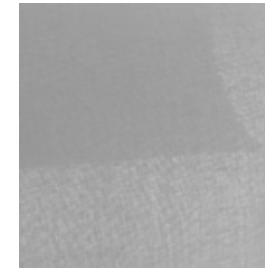
AST/03-300



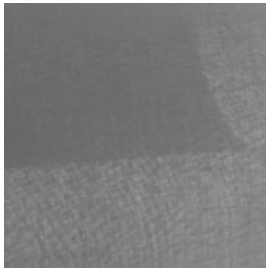
AST/04-230



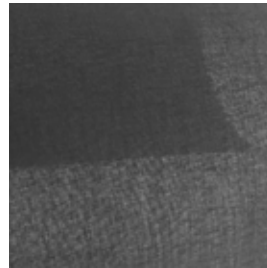
AST/05-300



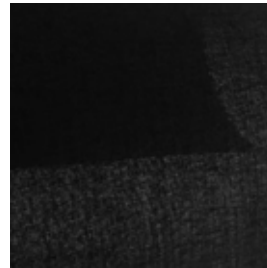
AST/06-300



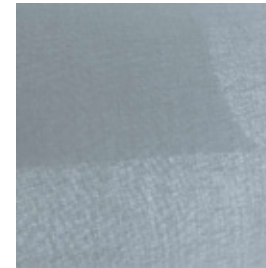
AST/07-300



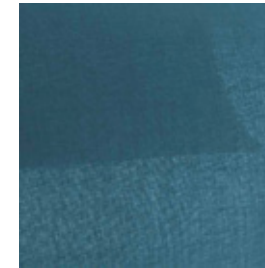
AST/08-300



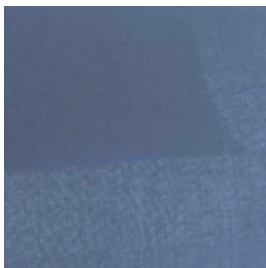
AST/09-230



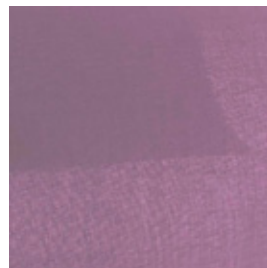
AST/11-230



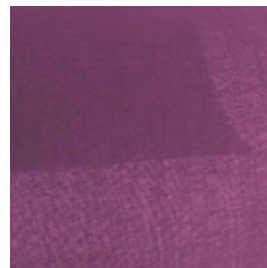
AST/12-230



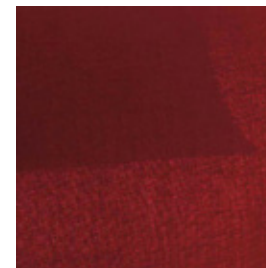
AST/13-230



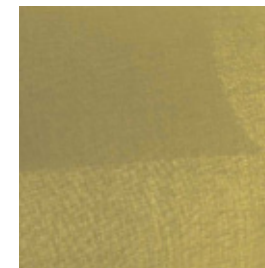
AST/14-230



AST/16-230



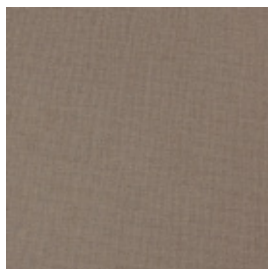
AST/20-230



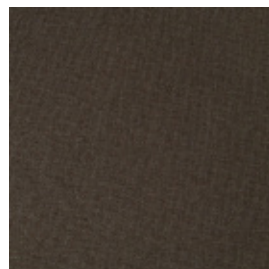
Astra F.R.



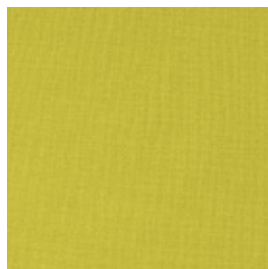
AST/22-230



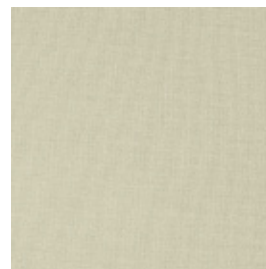
AST/23-230



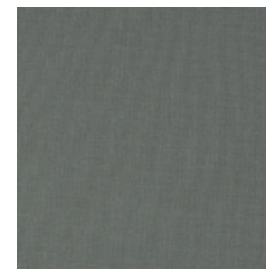
AST/26-230



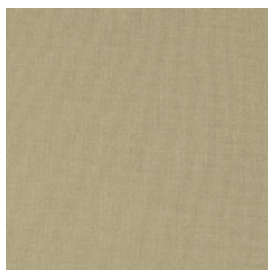
AST/31-300



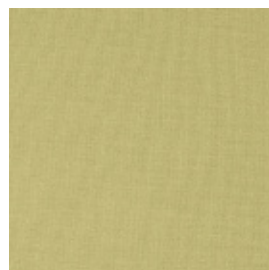
AST/32-230



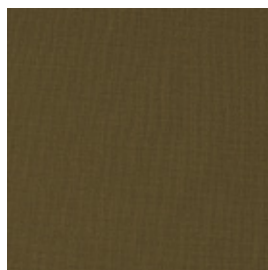
AST/33-230



AST/34-230



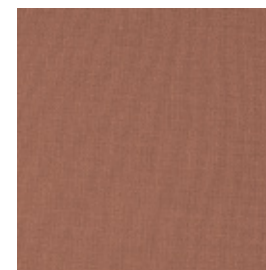
AST/35-230



AST/36-230



AST/37-230
























AST/38-230



Name	Cat.	Ref.	Composition	F.R. classification	Health certifications	Width cm	Weight g/m2	Thickness mm	OF %	Shading	TS %	RS %	AS %	TL %	RL %	INT Type C glass	EXT Type C glass	INT Type D glass	EXT Type D glass	Glare control	↓UV %	αω	Mechanical resistance WARP daN/5cm	Mechanical resistance WEFT daN/5cm	Colour fastness to light	OUTDOOR	Sealable
Reference Standard							UNI EN ISO 2286-2	UNI EN ISO 2286-3	UNI EN 14501	UNI EN 14501	UNI EN 14501	UNI EN 14501	UNI EN 14501	UNI EN 14501	UNI EN 14501	UNI EN 14501	UNI EN 14501	UNI EN 14501	UNI EN 14501	UNI EN 14501	UNI EN 14501	EN ISO 11654	UNI EN ISO 1421	UNI EN ISO 1421	UNI EN ISO 105 B02		

Astra F.R.	AST	AST/01-300	100% PL Trevira CS	Classe1 (I), M1(F), B1(D), BS (GB), EN 13773 Class 1 (EU)	OEKO-TEX REACH	300	170	0,35	15	○	43	50	7	45	54	0,41						90				6/7			
Astra F.R.	AST	AST/02-300	100% PL Trevira CS			300	170	0,35	15	○	32	48	20	42	55	0,42							89				6/7		
Astra F.R.	AST	AST/03-300	100% PL Trevira CS			300	170	0,35	15	○	40	47	13	37	46	0,42							83				6/7		
Astra F.R.	AST	AST/04-230	100% PL Trevira CS			230	170	0,35	15	○	28	37	35	17	39	0,45							83				6/7		
Astra F.R.	AST	AST/05-300	100% PL Trevira CS			300	170	0,35	15	○	36	49	15	31	46	0,42							85				6/7		
Astra F.R.	AST	AST/06-300	100% PL Trevira CS			300	170	0,35	15	○	32	42	26	20	30	0,44							86				6/7		
Astra F.R.	AST	AST/07-300	100% PL Trevira CS			300	170	0,35	15	○	12	13	75	13	16	0,53							81				6/7		
Astra F.R.	AST	AST/08-300	100% PL Trevira CS			300	170	0,35	15	○	13	7	80	11	5	0,55							81				6/7		
Astra F.R.	AST	AST/09-230	100% PL Trevira CS			230	170	0,35	15	○	20	52	28	30	55	0,40							86				6/7		

Tutti i coefficienti potrebbero avere una tolleranza di +/- 5%
 Attenzione: La tonalità dei colori può variare leggermente da lotto a lotto

 Larghezza	 Composizione	 Certificazione	 IMO - Tessuti per settore navale	 Riflessione	 Riflessione luce visibile	 Assorbimento acustico
 Spessore	 Ignifugo	 Solidità luce	 Fattore di apertura	 Assorbimento solare	 G tot Type C - GLASS	 Trama - Ordito N5 cm
 Peso	 Trasparenza	 Saldabilità	 Trasmissione solare	 Trasmissione luce visibile	 Abbattimento UV	 Glare control

MANUTENZIONE MANEGGIARE IL TESSUTO CON CURA E MANI PULITE. NON UTILIZZARE SOLVENTI O SOSTANZE ABRASIVE. DURANTE LE PULIZIE DELLE FINESTRE LA TENDA DOVRA' ESSERE SOLLEVATA PER EVITARE CONTATTO CON PRODOTTI PER LA PULIZIA. RIMUOVERE LA POLVERE CON ASPIRAPOLVERE O ARIA COMPRESSA. EVITARE DI TIRARE O ALLUNGARE IL TESSUTO. PER I TESSUTI RIVESTITI IN PVC SOLO: PULIRE CON UNA SPUGNA UMIDA, SE NECESSARIO CON SAPONE, RISCIAQUARE CON ACQUA PULITA, NON STROFINARE. LASCIARE LA TENDA ABBASSATA FINO AD ASCIUGATURA.

Name	Cat.	Ref.	Composition	F.R. classification	Health certifications	Width cm	Weight g/m2	Thickness mm	OF %	Shading	TS %	RS %	AS %	TL %	RL %	INT Type C glass	EXT Type C glass	INT Type D glass	EXT Type D glass	Glare control	↓UV %	αω	Mechanical resistance WARP daN/5cm	Mechanical resistance WEFT daN/5cm	Colour fastness to light	OUTDOOR	Sealable
Reference Standard							UNI EN ISO 2286-2	UNI EN ISO 2286-3	UNI EN 14501	UNI EN 14501	UNI EN 14501	UNI EN 14501	UNI EN 14501	UNI EN 14501	UNI EN 14501	UNI EN 14501	UNI EN 14501	UNI EN 14501	UNI EN 14501	UNI EN 14501	UNI EN 14501	EN ISO 11654	UNI EN ISO 1421	UNI EN ISO 1421	UNI EN ISO 105 B02		

Astra F.R.	AST	AST/11-230	100% PL Trevira CS	Classe1 (I), M1(F), B1(D), BS (GB), EN 13773 Class 1 (EU)	OEKO-TEX REACH	230	170	0,35	15	○	14	17	69	11	18	0,52						84				6/7			
Astra F.R.	AST	AST/12-230	100% PL Trevira CS			230	170	0,35	15	○	16	24	60	12	27	0,49							85				6/7		
Astra F.R.	AST	AST/13-230	100% PL Trevira CS			230	170	0,35	15	○	21	28	51	18	36	0,48							87				6/7		
Astra F.R.	AST	AST/14-230	100% PL Trevira CS			230	170	0,35	15	○	21	28	51	18	31	0,48							85				6/7		
Astra F.R.	AST	AST/16-230	100% PL Trevira CS			230	170	0,35	15	○	12	16	72	13	17	0,52							82				6/7		
Astra F.R.	AST	AST/20-230	100% PL Trevira CS			230	170	0,35	15	○	13	30	57	14	32	0,47							85				6/7		
Astra F.R.	AST	AST/22-230	100% PL Trevira CS			230	170	0,35	15	○	34	39	27	22	26	0,45							81				6/7		
Astra F.R.	AST	AST/23-230	100% PL Trevira CS			230	170	0,35	15	○	29	32	39	13	11	0,47							87				6/7		
Astra F.R.	AST	AST/26-230	100% PL Trevira CS	230	170	0,35	15	○	28	49	23	32	53	0,41							87				6/7				

Tutti i coefficienti potrebbero avere una tolleranza di +/- 5%
 Attenzione: La tonalità dei colori può variare leggermente da lotto a lotto

	Larghezza		Composizione		Certificazione		IMO - Tessuti per settore navale		Riflessione		Riflessione luce visibile		Assorbimento acustico
	Spessore		Ignifugo		Solidità luce		Fattore di apertura		Assorbimento solare		G tot Type C - GLASS		Trama - Ordito N5 cm
	Peso		Trasparenza		Saldabilità		Trasmissione solare		Trasmissione luce visibile		Abbattimento UV		Glare control

MANUTENZIONE MANEGGIARE IL TESSUTO CON CURA E MANI PULITE. NON UTILIZZARE SOLVENTI O SOSTANZE ABRASIVE. DURANTE LE PULIZIE DELLE FINESTRE LA TENDA DOVRA' ESSERE SOLLEVATA PER EVITARE CONTATTO CON PRODOTTI PER LA PULIZIA. RIMUOVERE LA POLVERE CON ASPIRAPOLVERE O ARIA COMPRESSA. EVITARE DI TIRARE O ALLUNGARE IL TESSUTO. PER I TESSUTI RIVESTITI IN PVC SOLO: PULIRE CON UNA SPUGNA UMIDA, SE NECESSARIO CON SAPONE, RISCIAQUARE CON ACQUA PULITA, NON STROFINARE. LASCIARE LA TENDA ABBASSATA FINO AD ASCIUGATURA.

Name	Cat.	Ref.	Composition	F.R. classification	Health certifications	Width cm	Weight g/m ²	Thickness mm	OF %	Shading	TS %	RS %	AS %	TL %	RL %	INT Type C glass	EXT Type C glass	INT Type D glass	EXT Type D glass	Glare control	↓UV %	αω	Mechanical resistance WARP daN/5cm	Mechanical resistance WEFT daN/5cm	Colour fastness to light	OUTDOOR	Sealable
Reference Standard							UNI EN ISO 2286-2	UNI EN ISO 2286-3	UNI EN 14501	UNI EN 14501	UNI EN 14501	UNI EN 14501	UNI EN 14501	UNI EN 14501	UNI EN 14501	UNI EN 14501	UNI EN 14501	UNI EN 14501	UNI EN 14501	UNI EN 14501	UNI EN 14501	EN ISO 11654	UNI EN ISO 1421	UNI EN ISO 1421	UNI EN ISO 105 B02		

Astra F.R.	AST	AST/31-300	100% PL Trevira CS	Classe 1 (I), M1(F), B1(D), BS (GB), EN 13773 Class 1 (EU)	OEKO-TEX REACH	300	170	0,35	15	○	42	51	7	37	56	0,41						84				6/7			
Astra F.R.	AST	AST/32-230	100% PL Trevira CS			230	170	0,35	15	○	33	38	29	22	27	0,45							81				6/7		
Astra F.R.	AST	AST/33-230	100% PL Trevira CS			230	170	0,35	15	○	21	41	38	19	43	0,44							82				6/7		
Astra F.R.	AST	AST/34-230	100% PL Trevira CS			230	170	0,35	15	○	32	49	19	36	55	0,42							89				6/7		
Astra F.R.	AST	AST/35-230	100% PL Trevira CS			230	170	0,35	15	○	16	33	51	14	36	0,46							80				6/7		
Astra F.R.	AST	AST/36-230	100% PL Trevira CS			230	170	0,35	15	○	25	50	25	31	57	0,41							87				6/7		
Astra F.R.	AST	AST/37-230	100% PL Trevira CS			230	170	0,35	15	○	37	43	20	25	31	0,44							77				6/7		
Astra F.R.	AST	AST/38-230	100% PL Trevira CS			230	170	0,35	15	○	23	51	26	30	57	0,41							84				6/7		

Tutti i coefficienti potrebbero avere una tolleranza di +/- 5%
 Attenzione: La tonalità dei colori può variare leggermente da lotto a lotto

	Larghezza		Composizione		Certificazione		IMO - Tessuti per settore navale		Riflessione		Riflessione luce visibile		Assorbimento acustico
	Spessore		Ignifugo		Solidità luce		Fattore di apertura		Assorbimento solare		G tot Type C - GLASS		Trama - Ordito N5 cm
	Peso		Trasparenza		Saldabilità		Trasmissione solare		Trasmissione luce visibile		Abbattimento UV		Glare control

MANUTENZIONE MANEGGIARE IL TESSUTO CON CURA E MANI PULITE. NON UTILIZZARE SOLVENTI O SOSTANZE ABRASIVE. DURANTE LE PULIZIE DELLE FINESTRE LA TENDA DOVRA' ESSERE SOLLEVATA PER EVITARE CONTATTO CON PRODOTTI PER LA PULIZIA. RIMUOVERE LA POLVERE CON ASPIRAPOLVERE O ARIA COMPRESSA. EVITARE DI TIRARE O ALLUNGARE IL TESSUTO. PER I TESSUTI RIVESTITI IN PVC SOLO: PULIRE CON UNA SPUGNA UMIDA, SE NECESSARIO CON SAPONE, RISCIAQUARE CON ACQUA PULITA, NON STROFINARE. LASCIARE LA TENDA ABBASSATA FINO AD ASCIUGATURA.