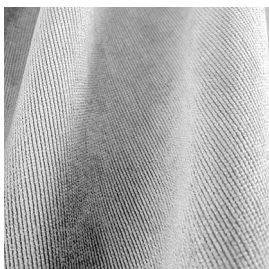


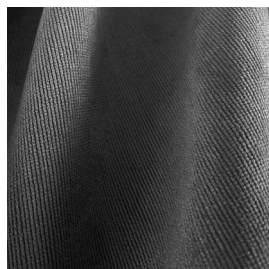
AFRODITE F.R.



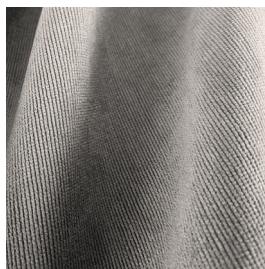
7118/01



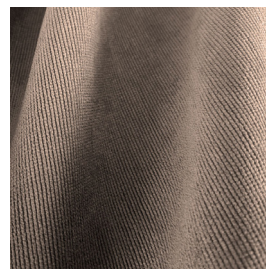
7118/03



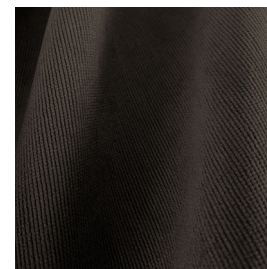
7118/06



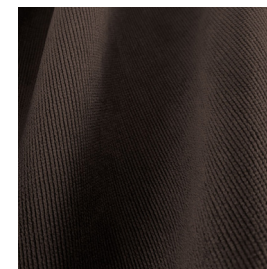
7118/10



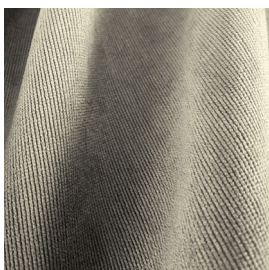
7118/11



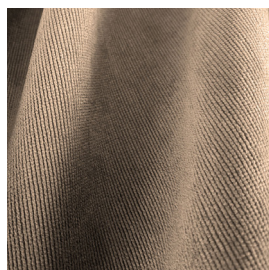
7118/12



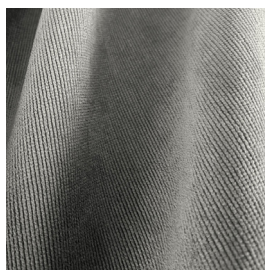
7118/14



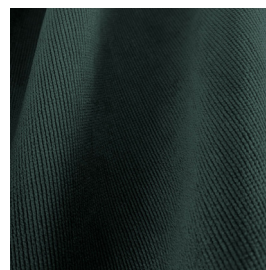
7118/15



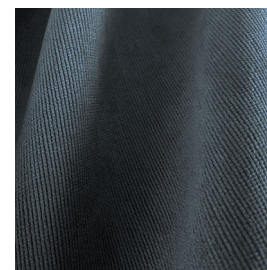
7118/17



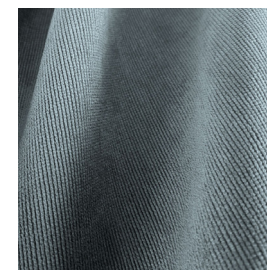
7118/19



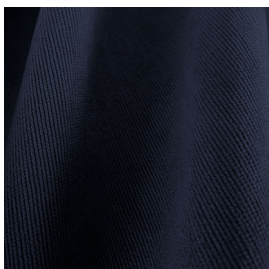
7118/20



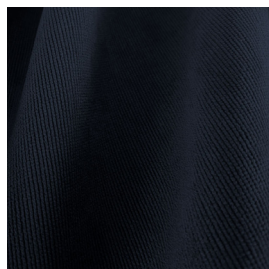
7118/21



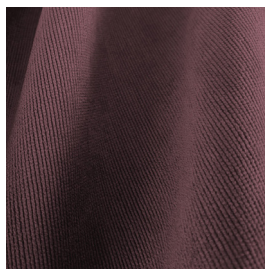
7118/23



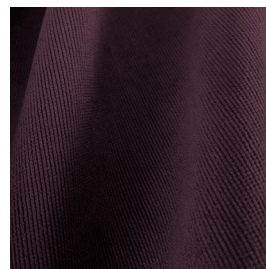
7118/24



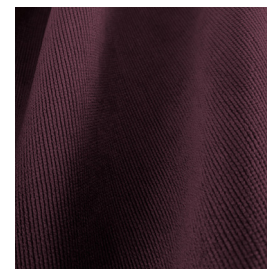
7118/26



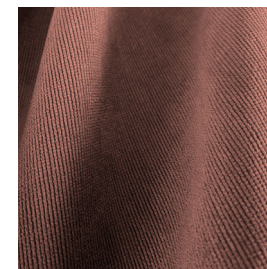
7118/27



7118/28



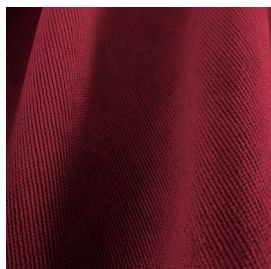
7118/29



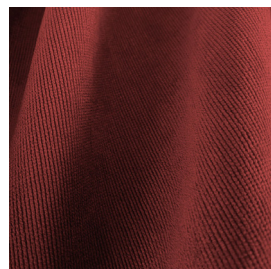
AFRODITE F.R.



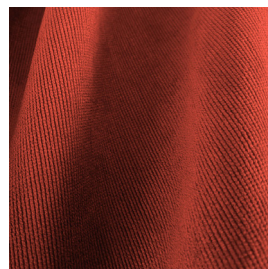
7118/31



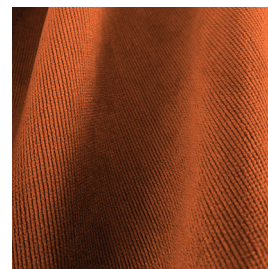
7118/33



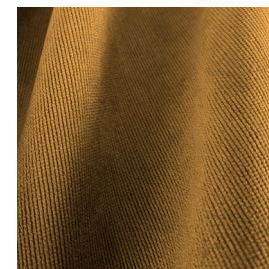
7118/34



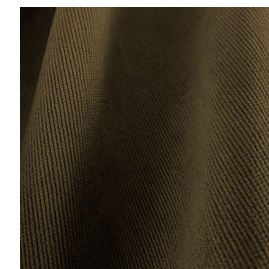
7118/35



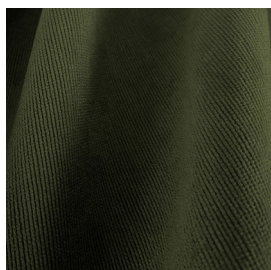
7118/37



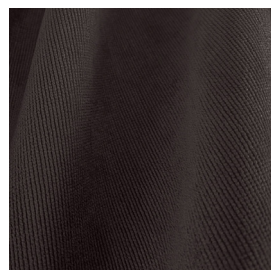
7118/39










7118/40



7118/41



Ref.	 cm	 Kg g/m ²						Categoria Prezzo	Aspetto
7118/01	300	375	100% PL F.R.	CLASS 1 (I), M1 (F), B1&B2 (D), BS 5867 (UK), EN 13773 (EU), IMO	No	Orizzontale - ai lati	Oscurante	D	Unito
7118/03	300	375	100% PL F.R.	CLASS 1 (I), M1 (F), B1&B2 (D), BS 5867 (UK), EN 13773 (EU), IMO	No	Orizzontale - ai lati	Oscurante	D	Unito
7118/06	300	375	100% PL F.R.	CLASS 1 (I), M1 (F), B1&B2 (D), BS 5867 (UK), EN 13773 (EU), IMO	No	Orizzontale - ai lati	Oscurante	D	Unito
7118/10	300	375	100% PL F.R.	CLASS 1 (I), M1 (F), B1&B2 (D), BS 5867 (UK), EN 13773 (EU), IMO	No	Orizzontale - ai lati	Oscurante	D	Unito
7118/11	300	375	100% PL F.R.	CLASS 1 (I), M1 (F), B1&B2 (D), BS 5867 (UK), EN 13773 (EU), IMO	No	Orizzontale - ai lati	Oscurante	D	Unito
7118/12	300	375	100% PL F.R.	CLASS 1 (I), M1 (F), B1&B2 (D), BS 5867 (UK), EN 13773 (EU), IMO	No	Orizzontale - ai lati	Oscurante	D	Unito
7118/14	300	375	100% PL F.R.	CLASS 1 (I), M1 (F), B1&B2 (D), BS 5867 (UK), EN 13773 (EU), IMO	No	Orizzontale - ai lati	Oscurante	D	Unito
7118/15	300	375	100% PL F.R.	CLASS 1 (I), M1 (F), B1&B2 (D), BS 5867 (UK), EN 13773 (EU), IMO	No	Orizzontale - ai lati	Oscurante	D	Unito
7118/17	300	375	100% PL F.R.	CLASS 1 (I), M1 (F), B1&B2 (D), BS 5867 (UK), EN 13773 (EU), IMO	No	Orizzontale - ai lati	Oscurante	D	Unito

Tutti i coefficienti potrebbero avere una tolleranza di +/- 5%
 Attenzione: La tonalità dei colori può variare leggermente da lotto a lotto

ATELIER
1963
 TESSUTI & SARTORIA



Larghezza



Ignifugo



Trasparenza



Piombato



Peso



Composizione










Imbottito



Cimosa

MANUTENZIONE

LAVARE IN ACQUA A 30°MAX, NO CANDEGGIO, NO TAMBURO, FERRO A 1, SÌ A SECCO, STENDE-RE APPESO. RITIRO AL PRIMO LAVAGGIO 0-2%. PER DATI SPECIFICI CONSULTARE LA SCHEDA PRODOTTO INDIVIDUALE IN ATELIER.

Ref.	 cm	 Kg g/m ²						Categoria Prezzo	Aspetto
7118/19	300	375	100% PL F.R.	CLASS 1 (I), M1 (F), B1&B2 (D), BS 5867 (UK), EN 13773 (EU), IMO	No	Orizzontale - ai lati	Oscurante	D	Unito
7118/20	300	375	100% PL F.R.	CLASS 1 (I), M1 (F), B1&B2 (D), BS 5867 (UK), EN 13773 (EU), IMO	No	Orizzontale - ai lati	Oscurante	D	Unito
7118/21	300	375	100% PL F.R.	CLASS 1 (I), M1 (F), B1&B2 (D), BS 5867 (UK), EN 13773 (EU), IMO	No	Orizzontale - ai lati	Oscurante	D	Unito
7118/23	300	375	100% PL F.R.	CLASS 1 (I), M1 (F), B1&B2 (D), BS 5867 (UK), EN 13773 (EU), IMO	No	Orizzontale - ai lati	Oscurante	D	Unito
7118/24	300	375	100% PL F.R.	CLASS 1 (I), M1 (F), B1&B2 (D), BS 5867 (UK), EN 13773 (EU), IMO	No	Orizzontale - ai lati	Oscurante	D	Unito
7118/26	300	375	100% PL F.R.	CLASS 1 (I), M1 (F), B1&B2 (D), BS 5867 (UK), EN 13773 (EU), IMO	No	Orizzontale - ai lati	Oscurante	D	Unito
7118/27	300	375	100% PL F.R.	CLASS 1 (I), M1 (F), B1&B2 (D), BS 5867 (UK), EN 13773 (EU), IMO	No	Orizzontale - ai lati	Oscurante	D	Unito
7118/28	300	375	100% PL F.R.	CLASS 1 (I), M1 (F), B1&B2 (D), BS 5867 (UK), EN 13773 (EU), IMO	No	Orizzontale - ai lati	Oscurante	D	Unito
7118/29	300	375	100% PL F.R.	CLASS 1 (I), M1 (F), B1&B2 (D), BS 5867 (UK), EN 13773 (EU), IMO	No	Orizzontale - ai lati	Oscurante	D	Unito

Tutti i coefficienti potrebbero avere una tolleranza di +/- 5%
 Attenzione: La tonalità dei colori può variare leggermente da lotto a lotto

ATELIER
1963
 TESSUTI & SARTORIA



Larghezza



Ignifugo



Trasparenza



Piombato



Peso



Composizione










Imbottito



Cimosa

MANUTENZIONE

LAVARE IN ACQUA A 30°MAX, NO CANDEGGIO, NO TAMBURO, FERRO A 1, SÌ A SECCO, STENDERE APPESO. RITIRO AL PRIMO LAVAGGIO 0-2%. PER DATI SPECIFICI CONSULTARE LA SCHEDA PRODOTTO INDIVIDUALE IN ATELIER.

Ref.	 cm	 Kg g/m ²						Categoria Prezzo	Aspetto
7118/31	300	375	100% PL F.R.	CLASS 1 (I), M1 (F), B1&B2 (D,)BS 5867 (UK),EN 13773 (EU), IMO	No	Orizzontale - ai lati	Oscurante	D	Unito
7118/33	300	375	100% PL F.R.	CLASS 1 (I), M1 (F), B1&B2 (D,)BS 5867 (UK),EN 13773 (EU), IMO	No	Orizzontale - ai lati	Oscurante	D	Unito
7118/34	300	375	100% PL F.R.	CLASS 1 (I), M1 (F), B1&B2 (D,)BS 5867 (UK),EN 13773 (EU), IMO	No	Orizzontale - ai lati	Oscurante	D	Unito
7118/35	300	375	100% PL F.R.	CLASS 1 (I), M1 (F), B1&B2 (D,)BS 5867 (UK),EN 13773 (EU), IMO	No	Orizzontale - ai lati	Oscurante	D	Unito
7118/37	300	375	100% PL F.R.	CLASS 1 (I), M1 (F), B1&B2 (D,)BS 5867 (UK),EN 13773 (EU), IMO	No	Orizzontale - ai lati	Oscurante	D	Unito
7118/39	300	375	100% PL F.R.	CLASS 1 (I), M1 (F), B1&B2 (D,)BS 5867 (UK),EN 13773 (EU), IMO	No	Orizzontale - ai lati	Oscurante	D	Unito
7118/40	300	375	100% PL F.R.	CLASS 1 (I), M1 (F), B1&B2 (D,)BS 5867 (UK),EN 13773 (EU), IMO	No	Orizzontale - ai lati	Oscurante	D	Unito
7118/41	300	375	100% PL F.R.	CLASS 1 (I), M1 (F), B1&B2 (D,)BS 5867 (UK),EN 13773 (EU), IMO	No	Orizzontale - ai lati	Oscurante	D	Unito

Tutti i coefficienti potrebbero avere una tolleranza di +/- 5%
Attenzione: La tonalità dei colori può variare leggermente da lotto a lotto

**ATELIER
1963**
TESSUTI & SARTORIA



Larghezza



Ignifugo



Trasparenza



Piombato



Peso



Composizione



Imbottito



Cimosa

MANUTENZIONE

LAVARE IN ACQUA A 30°MAX, NO CANDEGGIO, NO TAMBURO, FERRO A 1, SÌ A SECCO, STENDE-RE APPESO. RITIRO AL PRIMO LAVAGGIO 0-2%. PER DATI SPECIFICI CONSULTARE LA SCHEDA PRODOTTO INDIVIDUALE IN ATELIER.