

Rollbox 4110-4130



7.3.141





7.3.142

Rollbox serie 4110-4130



Cassonetto: tondo ø110 - 130 mm in alluminio estruso 6060 T6 UNI 8278

Headbox: round shape ø110 - 130 mm extruded aluminium 6060 T6 UNI 8278

Caja: Redondo ø110 - 130 mm en aleación de aluminio 6060 T6 UNI 8278

Cassette: Rond ø110 - 130 mm en aluminium extrudé 6060 T6 UNI 8278

Gehäuse: runde Form ø110 - 130 mm extrudiertes Aluminium 6060 T6 UNI 8278

Cassette: rond ø110 - 130 mm in geëxtrudeerd aluminium 6060 T6 UNI 8278

Fondale: tondo ø46 mm in alluminio estruso 6060 T60 UNI 8278 e correato di tappi laterali in materiale termoplastico con occhiali per scorrimento della guida

6060 T60 UNI 8278 extruded aluminium **bottombar** round shape ø46 mm with thermoplastic endcap with eyelets for sideguides

Contrapeso: redondo ø46 mm en aleación de aluminio 6060 T60 UNI 8278 con tapones en termoplástico y ojos para cables laterales

Barre de lestage: Rond en aluminium extrudé 6060 T60 UNI 8278 équipé de capuchons latéraux en matière thermoplastique avec oeil pour faire glisser le câble

Beschwerung: 6060 T60 UNI 8278 extrudiertes Aluminium runde Form mit thermoplast Enddeckel mit Öse für Pendelsicherung

Onderlat: rond in geëxtrudeerd aluminium 6060 T60 UNI 8278 met einkappen in thermoplastic met oog voor kabelgeleiding

ROLLBOX SERIE 4110-4130

Tipo di applicazione:

- Verticale

Ambiente di applicazione:

- Interno • Esterno • Su facciate continue

Azionamento:

- Motore tubolare 230 VAC (4110 - 4130) con regolazione del fincorsa

Fissaggio superiore:

- Rollbox 4110 - A soffitto/parete con staffe in acciaio inox AISI 316
- Rollbox 4130 - A soffitto/parete con staffe in acciaio inox AISI 316
- Rollbox 4130 - A soffitto/pavimento con staffe in alluminio pressofuso

Tipo di tessuto:

- Filtrante • Dim Out • Oscurante

Dimensioni:

- 4110: Max L 400 x H 440 cm • 4130: Max L 420 x H 560 cm

Applications:

- Vertical

Ambience:

- Interior • Outdoor • Glass facades

Operated by:

- 230V/50Hz M50 tubular motor with end stop integrated

Upper fixing:

- Rollbox 4110 - AISI 316 stainless steel wall/ceiling brackets
- Rollbox 4110 - AISI 316 stainless steel wall/ceiling brackets
- Rollbox 4130 - AISI 316 Die cast aluminium wall/ceiling brackets

Fabrics:

- Filtering • Dim Out • Black-out

Dimensions:

- 4110: Max L 400 x H 440 cm • 4130: Max L 420 x H 560 cm

Uso:

- Vertical

Ambiente:

- Interior • Exterior • Fachada continua de vidrio

Accionamento para:

- Motor 230V / 50Hz con fin de carrera

Top fijación:

- Rollbox 4110 - Techo/pared con soportes en acero inox AISI 316
- Rollbox 4130 - Techo/pared con soportes en acero inox AISI 316
- Rollbox 4130 - Techo/pared con soportes en aluminio fundido a presión

Tejidos:

- Reflectante • Filtrante • Oscureciente

Rendimiento:

- 4110: Max L 400 x H 440 cm • 4130: Max L 420 x H 560 cm

IT

Utilisation:

- Vertical

Environnement:

- Intérieur • Extérieur • Façades en verre

Actionee par:

- Moteur tubolaire 230V/50Hz M50 avec réglage de fin de course

Fixation supérieure:

- Rollbox 4110 - Plafond / mur avec supports en acier inoxydable AISI 316
- Rollbox 4130 - Plafond / mur avec supports en acier inoxydable AISI 316
- Rollbox 4130 - Plafond/Mur avec supports en aluminium moulé sous pression

Tissus:

- Filtrant • Dim Out • Obscurissant

Taille maximale:

- 4110: Max L 400 x H 440 cm • 4130: Max L 420 x H 560 cm

FR

EN

Anwendung:

- Vertikal

Anwendungsumgebung:

- Innenliegend • Außen • Glass Fassade

Bedienung mit:

- 230V/50Hz M50 Rohrmotor mit integrierte Endeinstellung

Befestigung:

- Rollbox 4110 - Wand / Deckenhalterungen aus Edelstahl AISI 316 (Click Träger)
- Rollbox 4130 - 6060 T60 UNI 8278 extrudiertes Aluminium Decken Wand Montage
- Rollbox 4130 - Wand- / Deckenhalterungen aus Edelstahl AISI 316 (Click Träger)

Stoffe:

- Halbtransparent • Abdunkelnd • Außenbereich

Abmessungen:

- 4110: Max L 400 x H 440 cm • 4130: Max L 420 x H 560 cm

DE

ES

Gebruik:

- Verticaal

Omgeving:

- Binnen • Buiten • Glasgevel

Bediend met:

- Buismotor 230V/50Hz M50 met eindekoers regeling

Bevestiging (Bevestiging):

- Rollbox 4110 - Plafond/wandsteunen in RVS AISI 316
- Rollbox 4130 - Plafond/wandsteunen in RVS AISI 316
- Rollbox 4130 - Plafond/wandsteunen in spuitgiet aluminium

Doeken:

- Filterend • Dim Out • Verduisterend

Maximale afmeting:

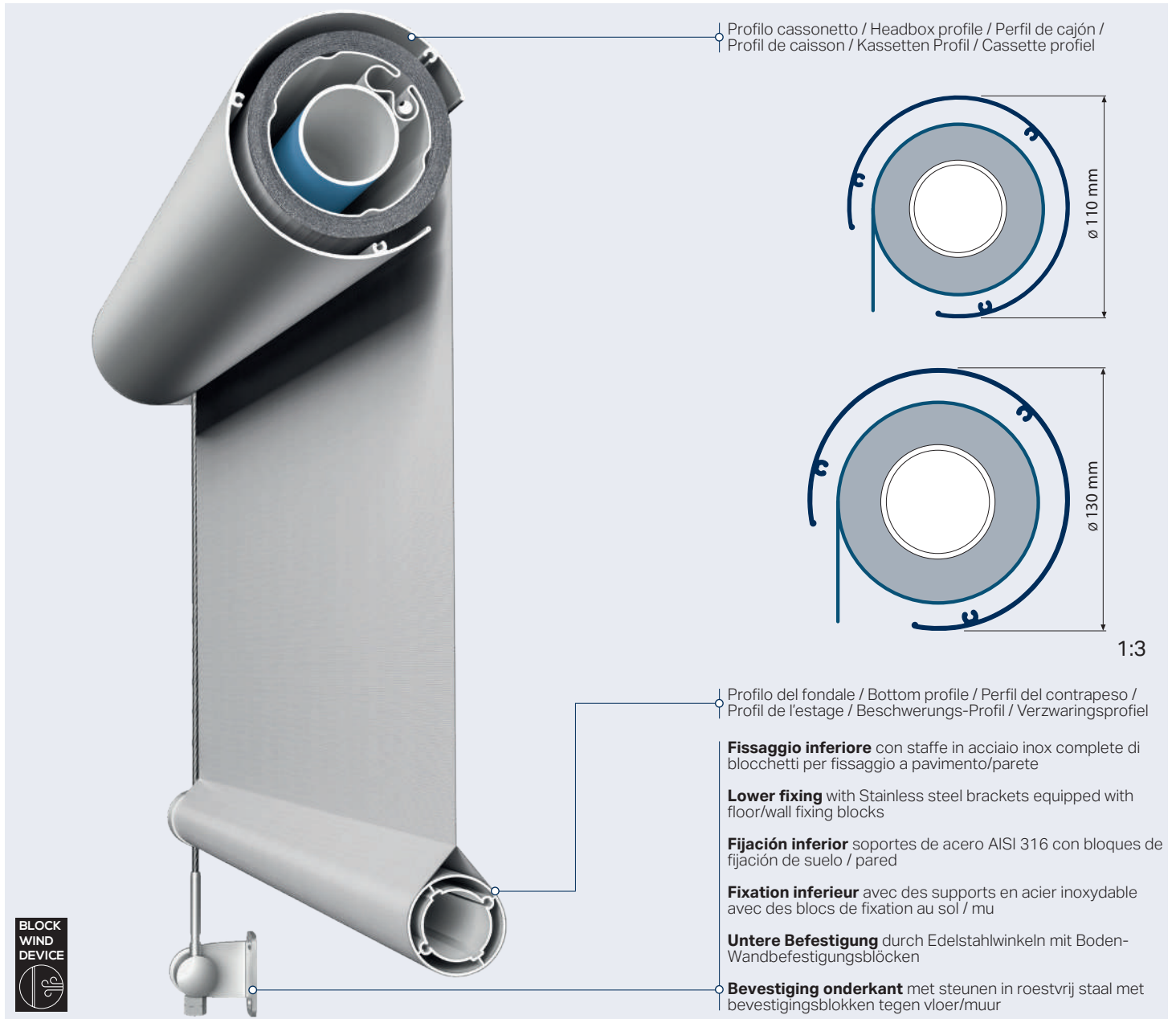
- 4110: Max L 400 x H 440 cm • 4130: Max L 420 x H 560 cm

NL

Rollbox serie 4110-4130



7.3.143



COLORI - COLOURS - COLORES - COLEURES - FARBEN - KLEUREN



ARGENTO ANODIZZATO
/ Anodized silver



BIANCO OPACO
/ Matt white



ALTRI COLORI A RICHIESTA
/ available on demand

ON DEMAND

| | | | | | | | | | |
|---|---|---|---|---|---|--|--|--|--|
| | | | | | | | | | |
| RAL 9003 Bianco segnale / Signal white | RAL 9016 Bianco traffico / Traffic white | RAL 9001 Bianco crema / Cream | RAL 1013 Bianco perla / Oyster white | RAL 1015 Avorio chiaro / Light ivory | RAL 1019 Beige grigiastro / Grey beige | RAL 8028 Marrone terra / Terra brown | RAL 8017 Marrone cioccolata / Chocolate brown | RAL 8014 Marrone seppia / Sepia brown | RAL 8019 Marrone grigiastro / Grey brow |
| | | | | | | | | | |
| RAL 7047 Grigio tele / Telegrey | RAL 7035 Grigio luce / Light grey | RAL 9006 Alluminio brillante / White aluminium | RAL 9007 Alluminio grigiastro / Grey aluminium | RAL 7030 Grigio pietra / Stone grey | RAL 7037 Grigio polvere / Dusty grey | RAL 7001 Grigio argento / Silver grey | RAL 7039 Grigio quarzo / Quartz grey | RAL 7024 Grigio grafite / Graphite grey | RAL 7022 Grigio ombra / Umbra grey |
| | | | | | | | | | |
| RAL 7021 Grigio nerastro / Black grey | RAL 9011 Nero grafite / Graphite black | RAL 9004 Nero segnale / Signal black | RAL 6005 Verde muschio / Moss green | ROVERE CHIARO 398-87R | ROVERE 414-73R | DOUGLAS 335-80 | CILIEGIO 317-70R | NOCE 102-70R | |



7.3.144

Rollbox serie 4110-4130

AZIONAMENTI - CORD OPERATED - ACCIONAMIENTOS - ACCIONAMENTOS - ACTIONNEMENT - SCHNURBETÄTIGUNG - KOORDBEDIEND - ПРИВЕДЕНИЕ В ДЕЙСТВИЕ ШНУРАМИ

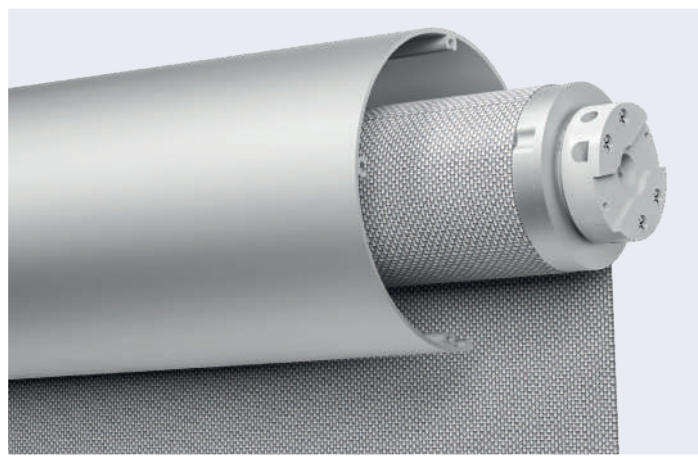
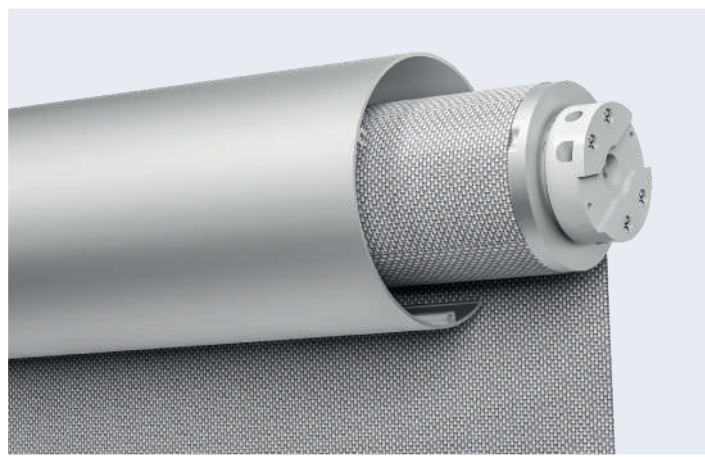
ROLLBOX 4110

Tenda a rullo azionamento a motore 230 VAC
230 VAC motorized roller blind - steel side guides



ROLLBOX 4130

Tenda a rullo azionamento a motore 230 VAC
230 VAC motorized roller blind



Rollbox serie 4110-4130

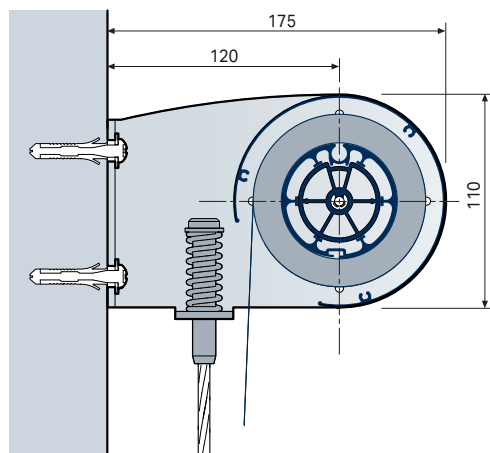


7.3.145

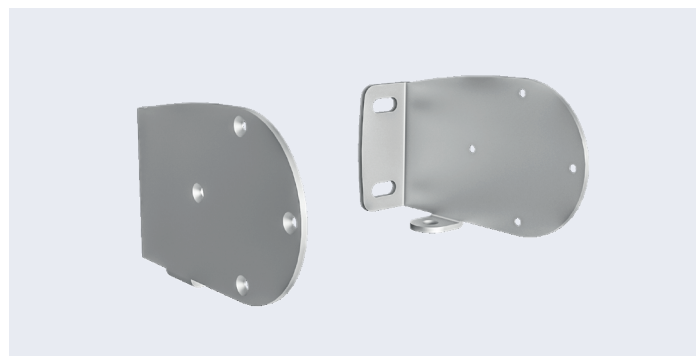
A PARETE - WALL - A PARED - NA PAREDE - MUR - WAND - MUUR - НАСТЕННЫЙ



1472



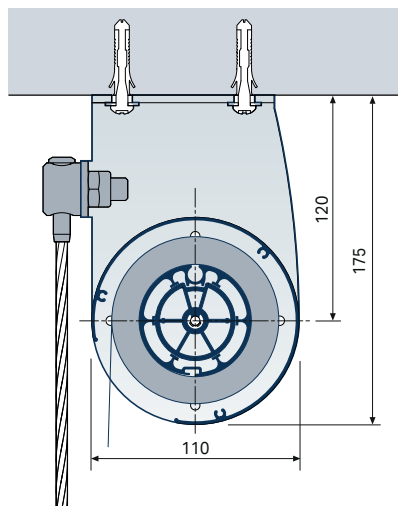
1:4



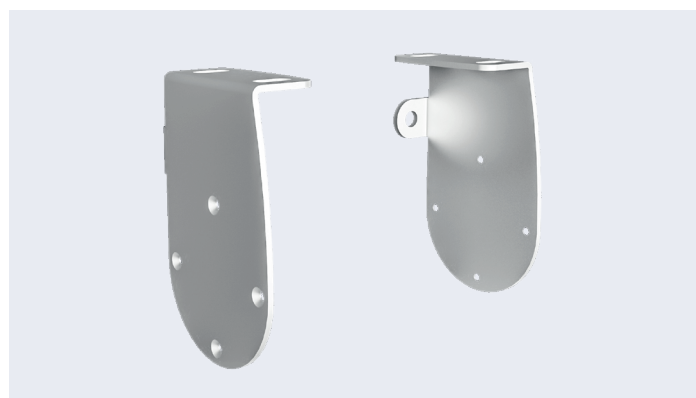
A SOFFITTO - CEILING - TECTO - TETO - PLAFOND - DECKE - PLAFOND - ПОТОЛОЧНЫЙ



1472



1:4

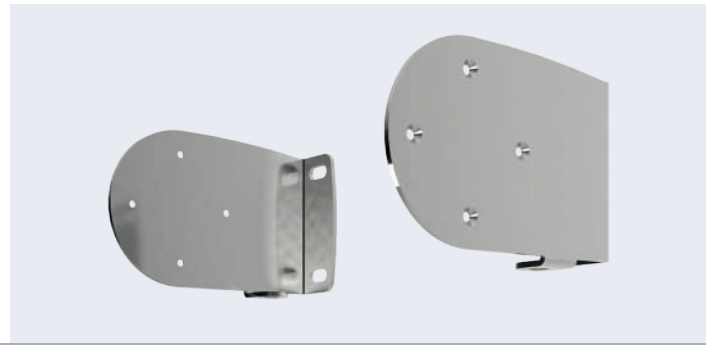




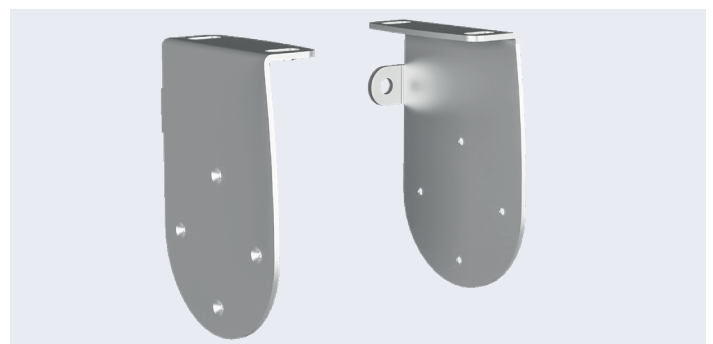
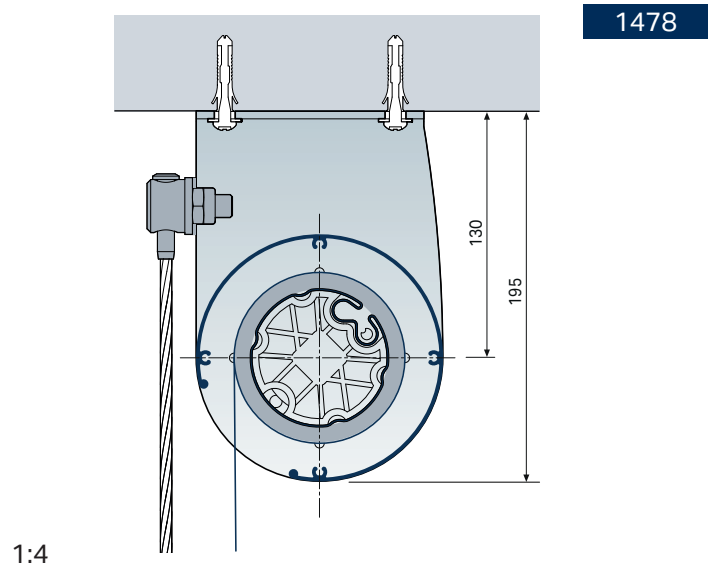
7.3.146

Rollbox serie 4110-4130

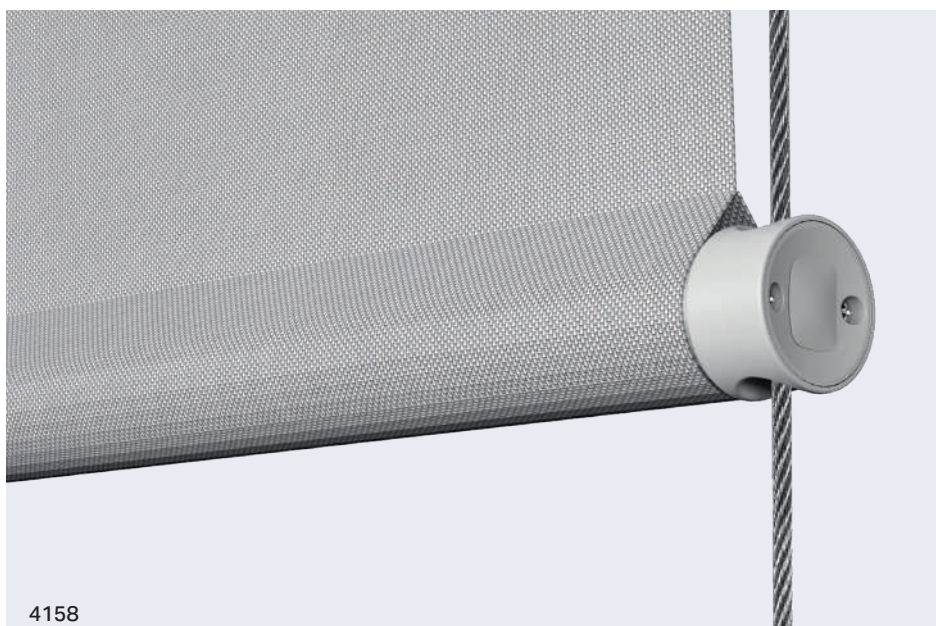
A PARETE - WALL - A PARED - MUR - WAND - MUUR



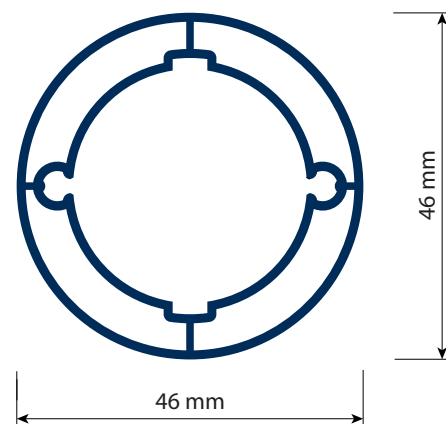
A SOFFITTO - CEILING - TECHO - PLAFOND - DECKE - PLAFOND



FONDALI - BOTTOM BARS - CONTRAPESOS - BARRES DE LESTAGE - BESCHWERUNGSPROFIL - ONDERLATTEN



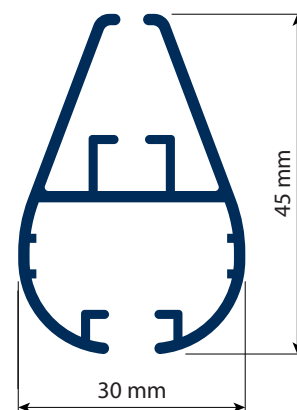
4158



1:1



1167



1:1

BLOCK WIND DEVICE

È la soluzione Mottura in caso di vento. BWD è un dispositivo meccanico che protegge la tenda anche in caso di vento forte. BWD, in sincronia con il motore digitale M2Net "serie DT" permette la messa in tensione del telo della tenda.

IT

C'est la solution Mottura en cas de vent. BWD est un dispositif mécanique qui protège la tente même par vent fort. BWD, en synchronisation avec le moteur numérique M2Net "série DT", permet de tendre le tissu de l'auvent.

FR

It is the Mottura solution in case of wind. BWD is a mechanical device that protects the tent even in strong winds. BWD, in synchrony with the M2Net "DT series" digital motor, allows to tension the awning fabric.

EN

Es ist die Mottura-Lösung bei Wind. BWD ist ein mechanisches Gerät, das das Zelt auch bei starkem Wind schützt. BWD ermöglicht synchron mit dem M2Net-Digitalmotor "DT series" das Spannen des Markisengewebes.

DE

Es la solución de Mottura en caso de viento. BWD es un dispositivo mecánico que protege la tienda incluso con vientos fuertes. BWD, en sincronía con el motor digital M2Net "serie DT", permite tensar la tela del toldo.

ES

Het is de Mottura-oplossing in geval van wind. BWD is een mechanisch apparaat dat de tent beschermt, zelfs bij sterke wind. BWD, synchroon met de M2Net digitale motor "DT-serie" maakt het spannen van de zonwering mogelijk.

NL





7.3.148

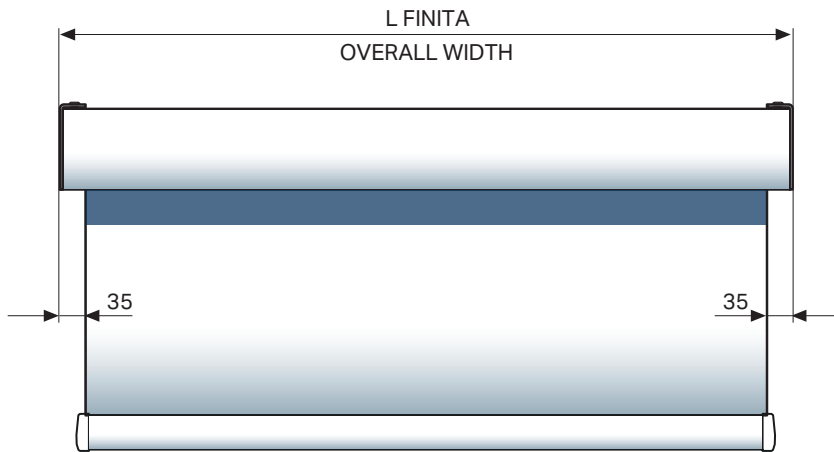
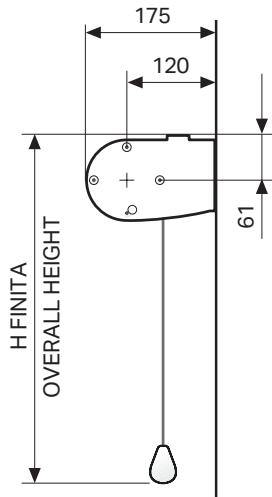
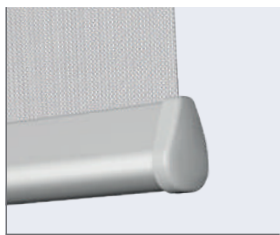
Rollbox serie 4110-4130

4110 | INSTALLAZIONE - INSTALLATION - INSTALACIÓN - INSTALLATION - INSTALLATION - INSTALLATIE

ART. 1472

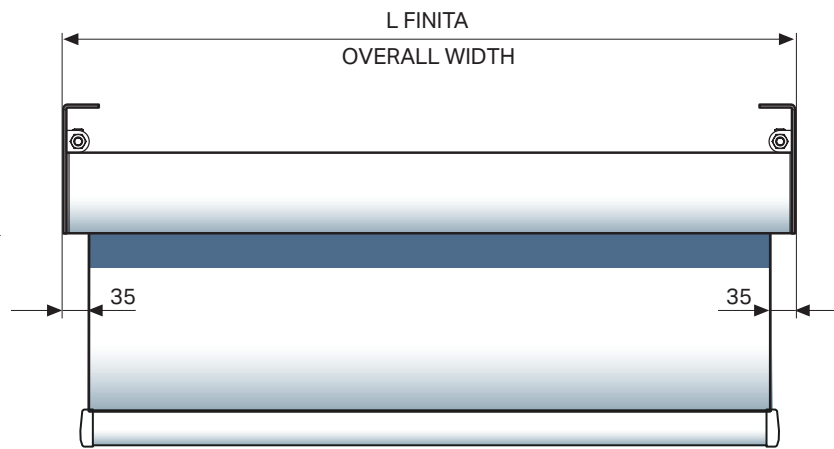
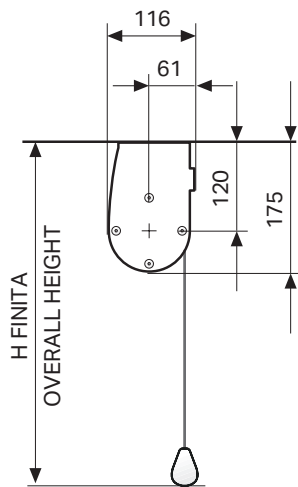
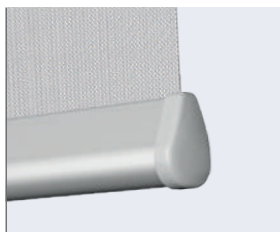
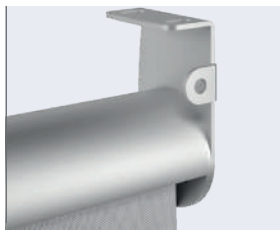
VERSION A

SENZA GUIDE - WITHOUT GUIDES - SIN GUÍAS - SEM GUIAS - OHNE FÜHRUNGSCIENEN - ZONDER ZIJGELEIDING



1:10

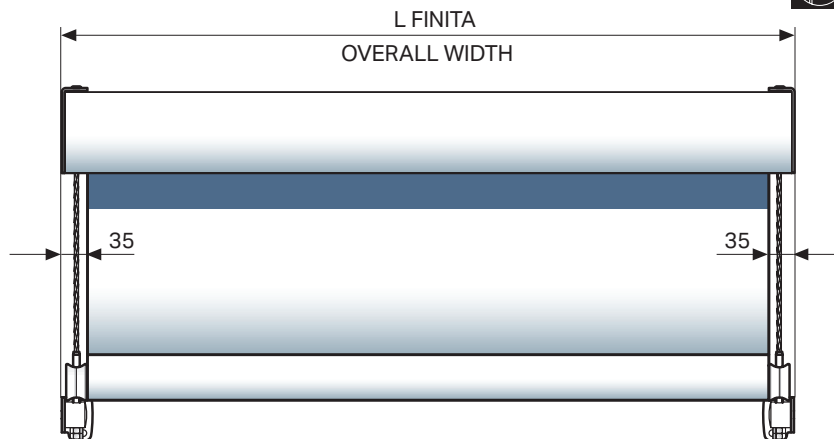
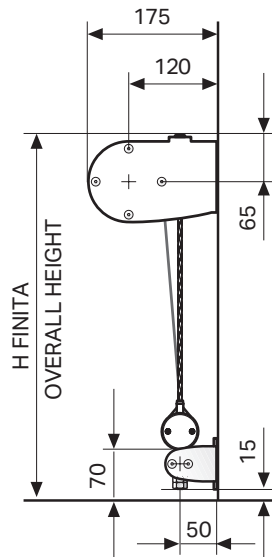
VERSION B



1:10

VERSION A

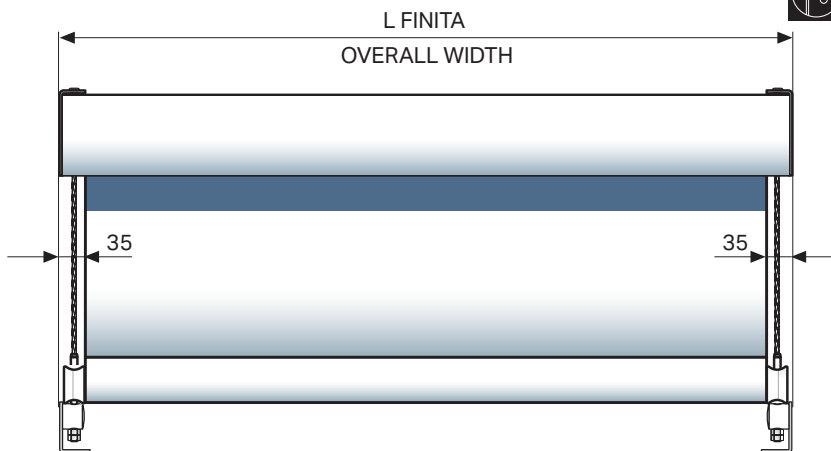
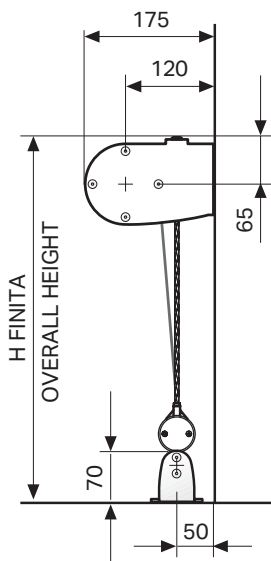
CON GUIDE - WITH GUIDES - CON GUÍAS - AVEC GUIDES - MIT FÜHRUNGSCIENEN - MET ZIJGELEIDING



1:10

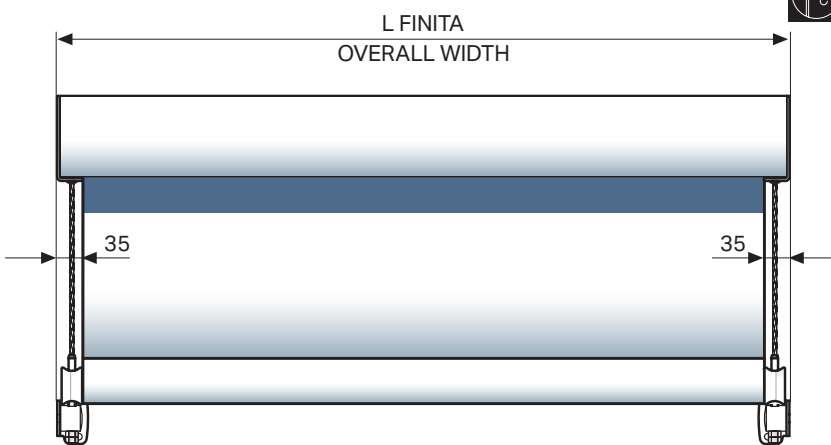
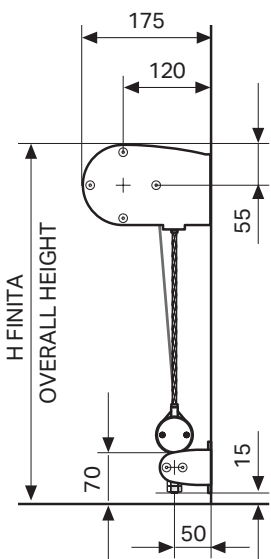


VERSION B



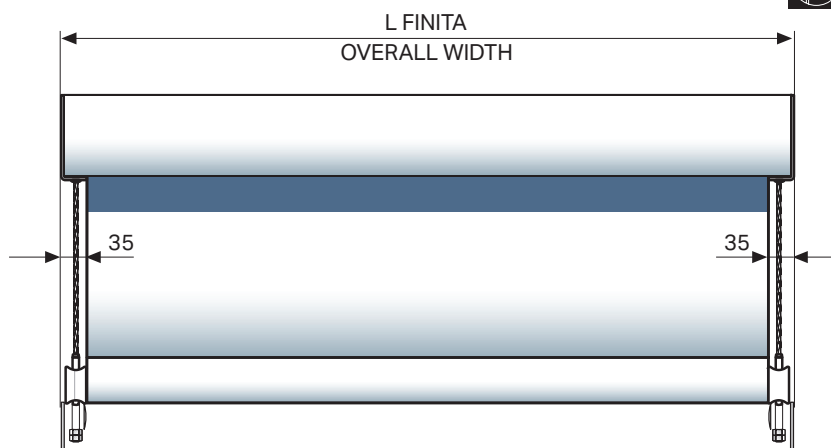
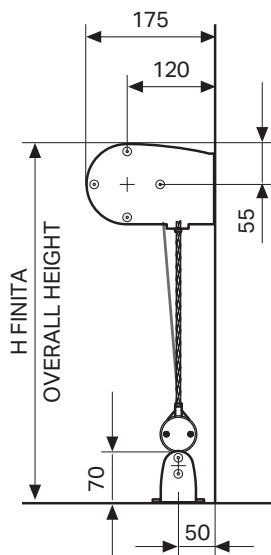
1:10

VERSION C



1:10

VERSION D



1:10



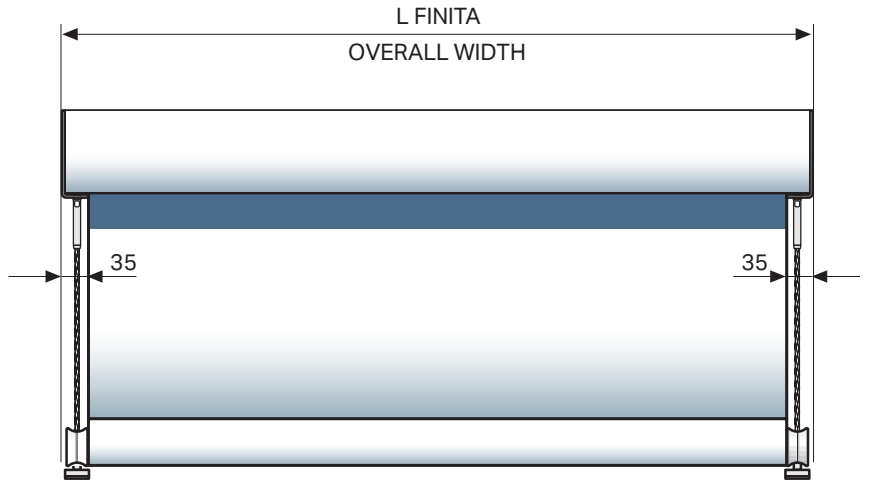
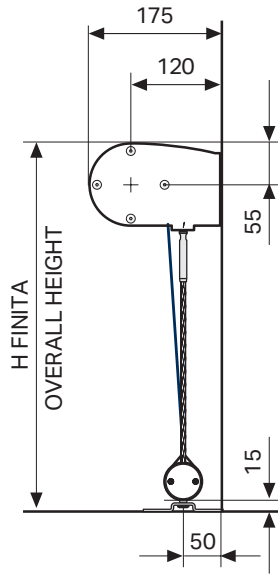
7.3.150

Rollbox serie 4110-4130

VERSION E

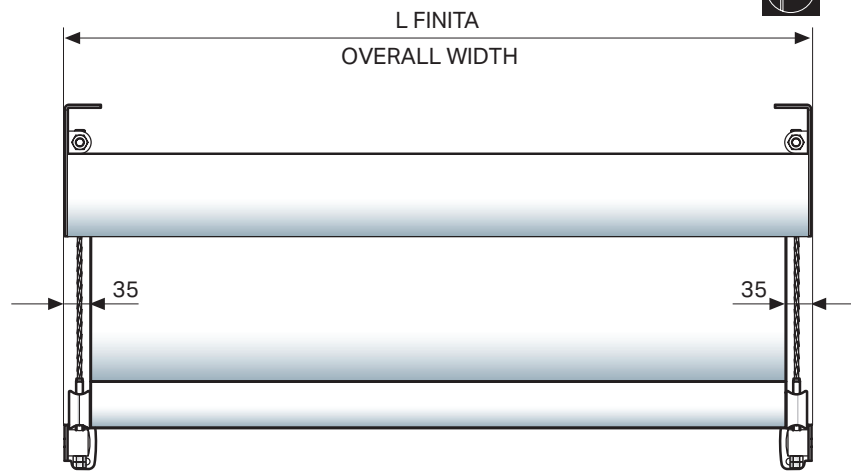
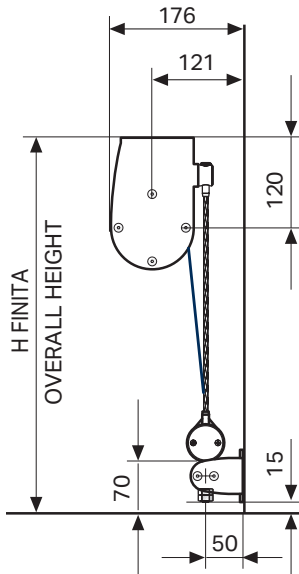
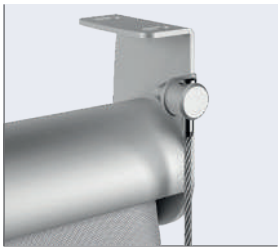


CON GUIDE - WITH GUIDES - CON GUÍAS - AVEC GUIDES - MIT FÜHRUNGSSCHIENEN - MET ZIJGELEIDING



1:10

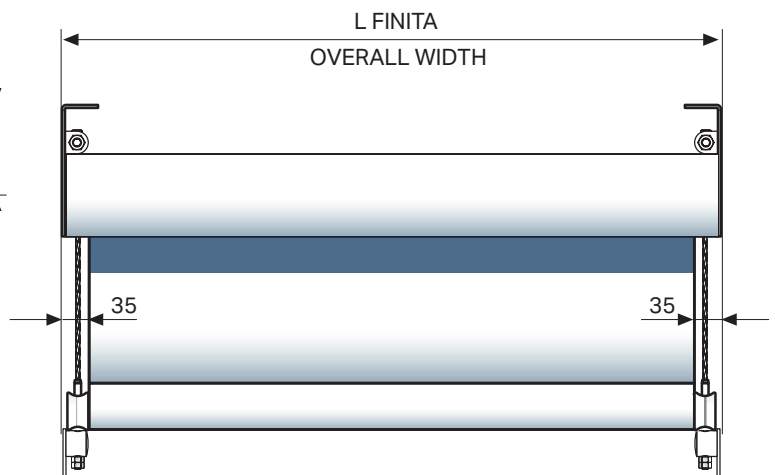
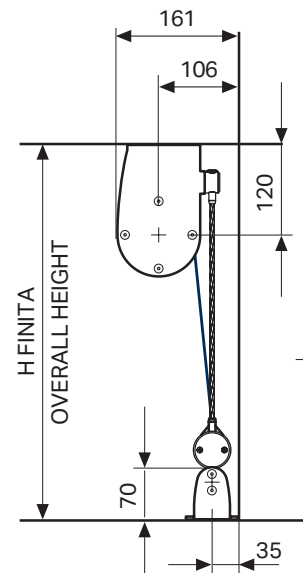
VERSION F



1:10



VERSION G



1:10

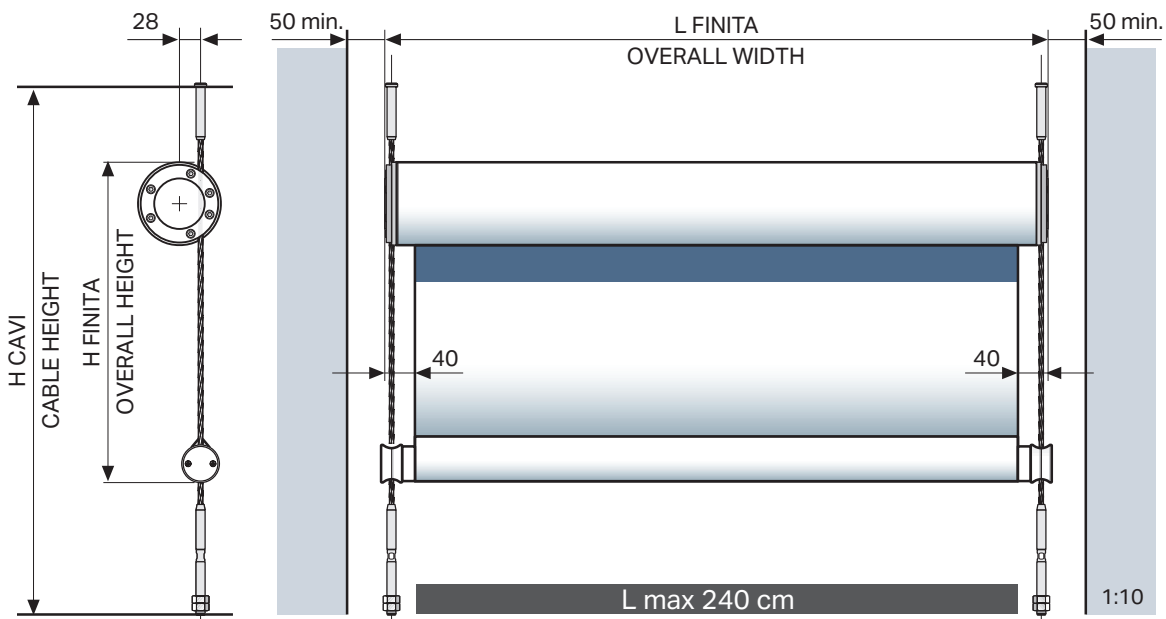


Rollbox serie 4110-4130



7.3.151

VERSION H

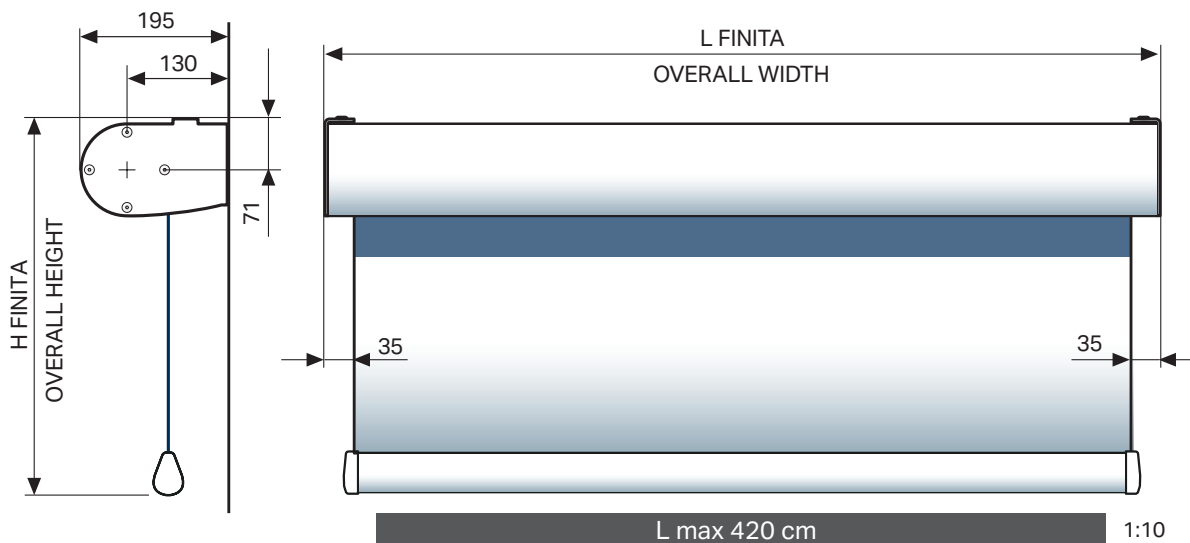
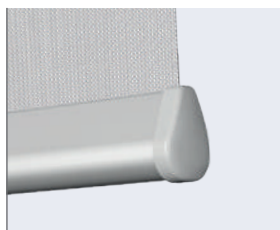
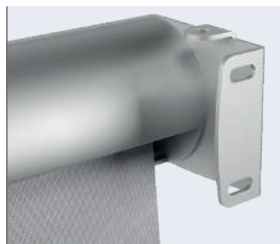


4130 | INSTALLAZIONE - INSTALLATION - INSTALACIÓN - INSTALLATION - INSTALLATION - INSTALLATIE

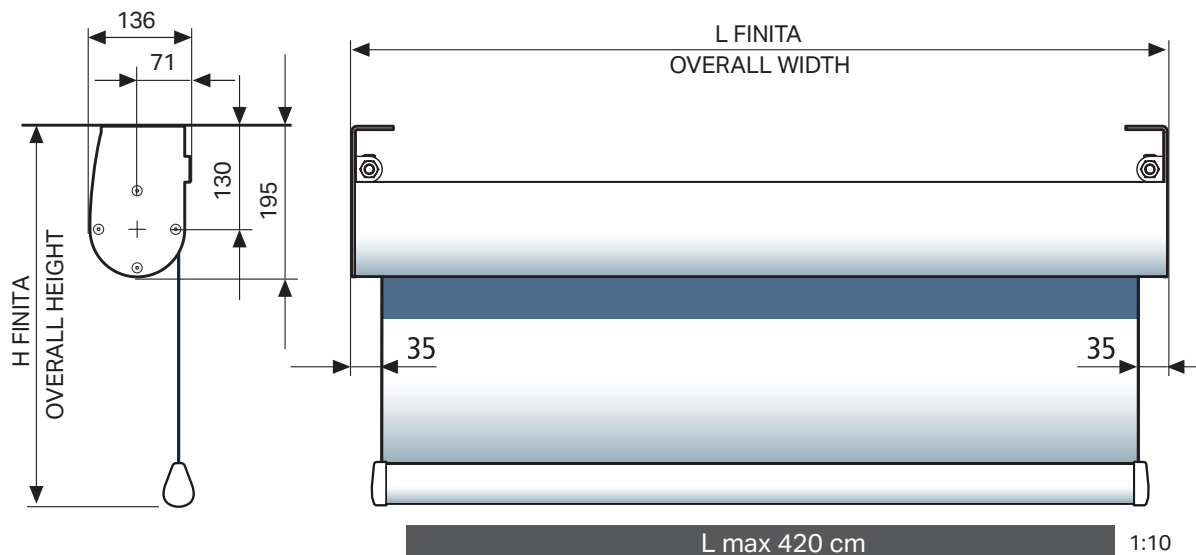
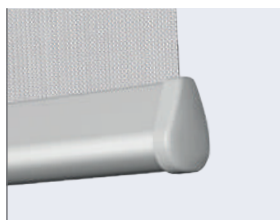
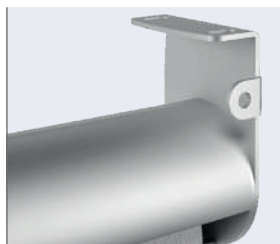
ART. 1478

VERSION A

SENZA GUIDE - WITHOUT GUIDES - SIN GUÍAS - SANS GUIDES - OHNE FÜHRUNGSCIENEN - ZONDER ZIJGELEIDING



VERSION B

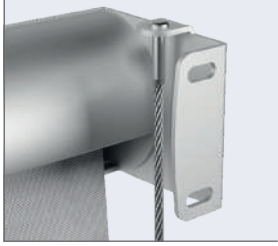




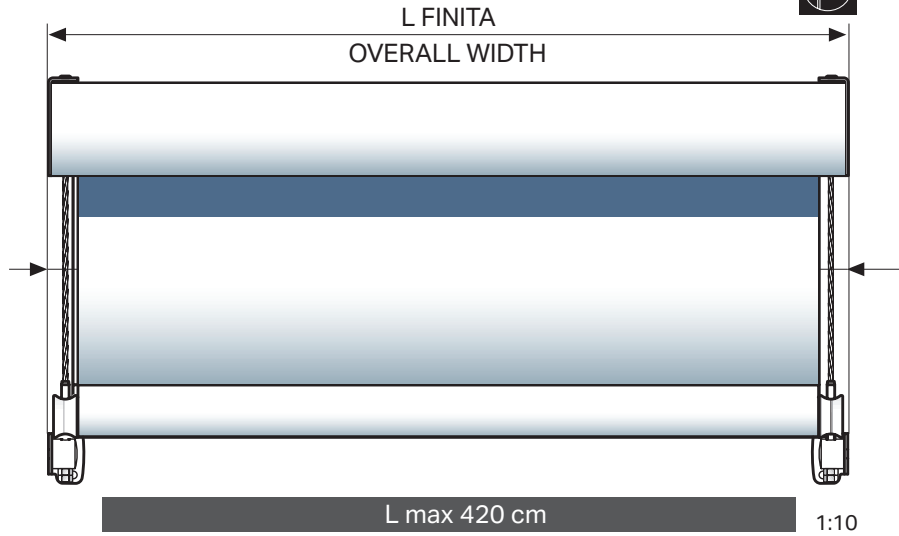
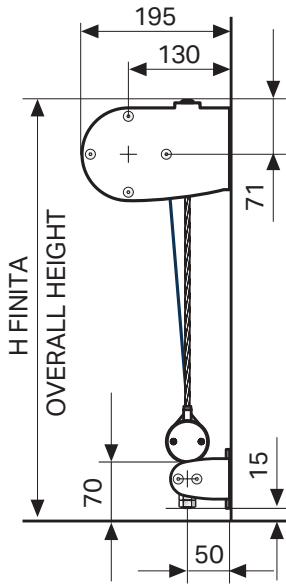
7.3.152

Rollbox serie 4110-4130

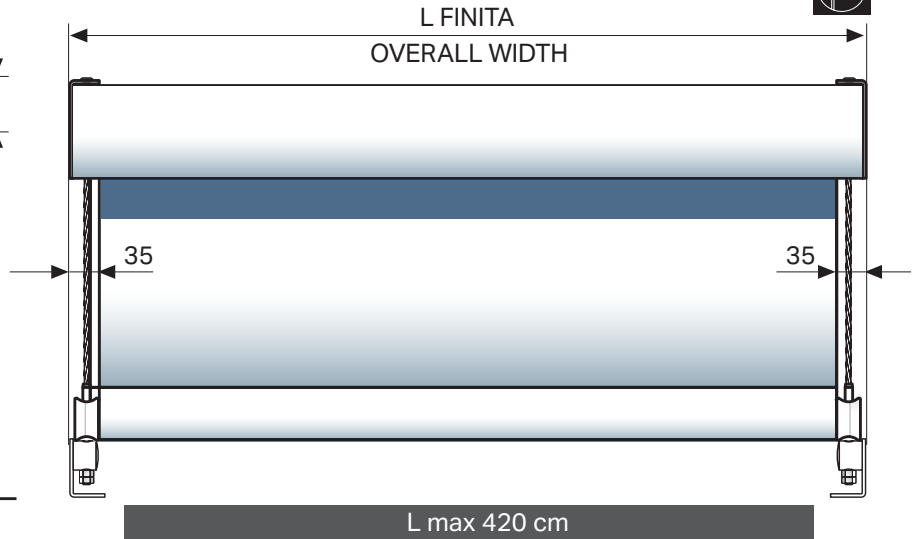
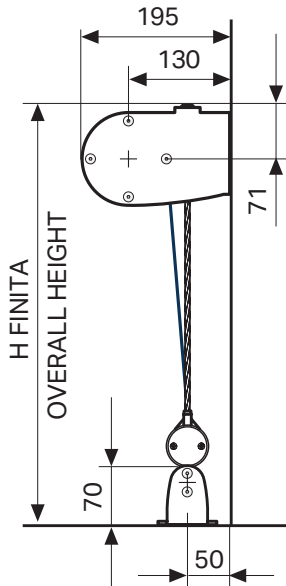
VERSION A



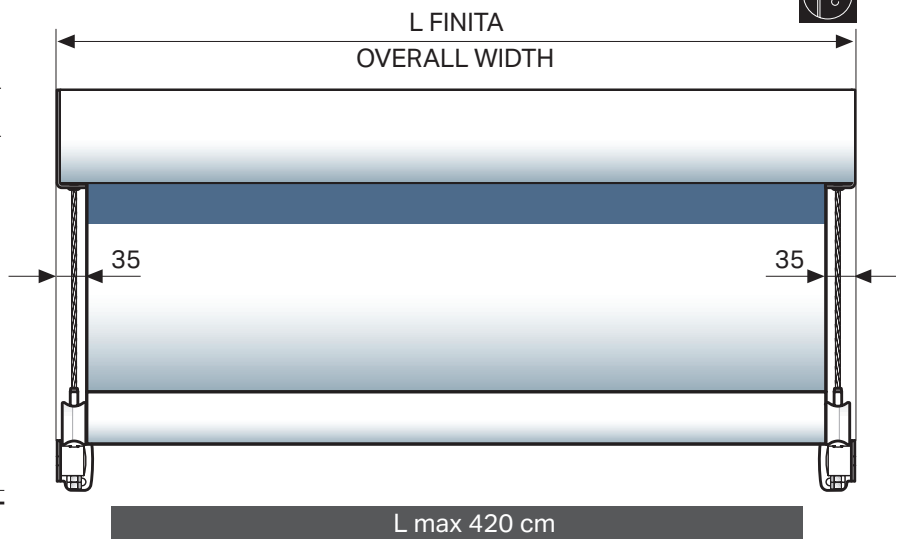
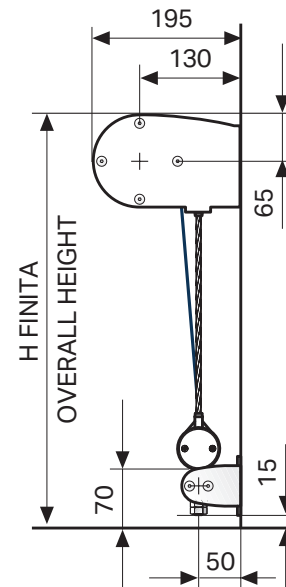
CON GUIDE - WITH GUIDES - CON GUÍAS - AVEC GUIDES - MIT FÜHRUNGSCIENEN - MET ZIJGELEIDING



VERSION B



VERSION C



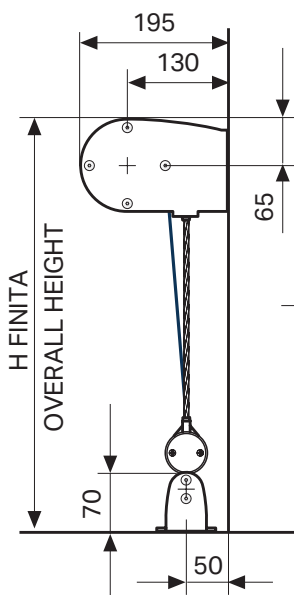
Rollbox serie 4110-4130



7.3.153

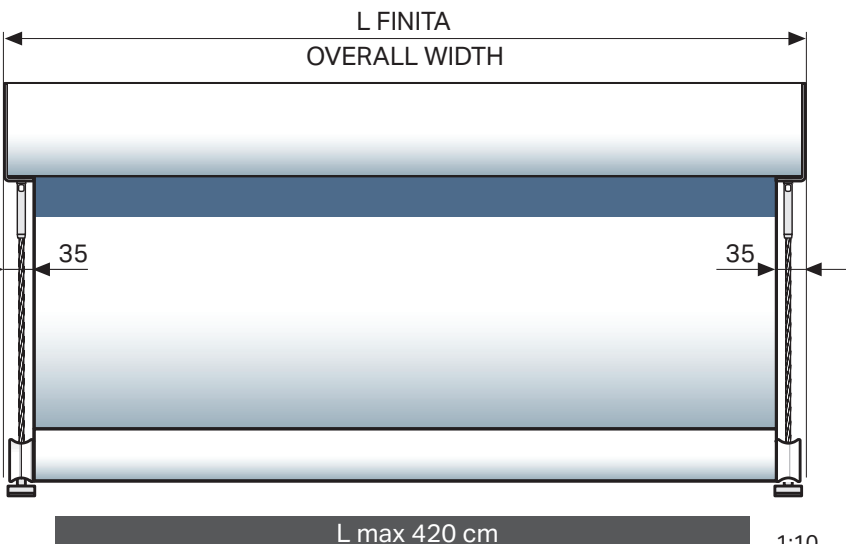
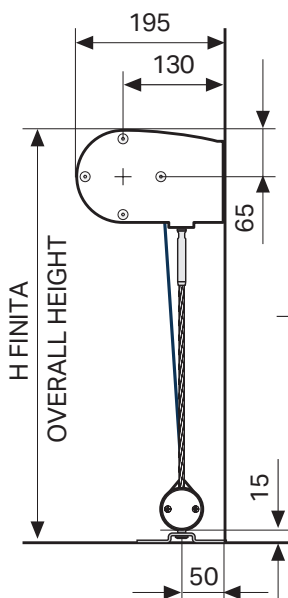
VERSION D

CON GUIDE - WITH GUIDES - CON GUÍAS - AVEC GUIDES - MIT FÜHRUNGSCIENEN - MET ZIJGELEIDING



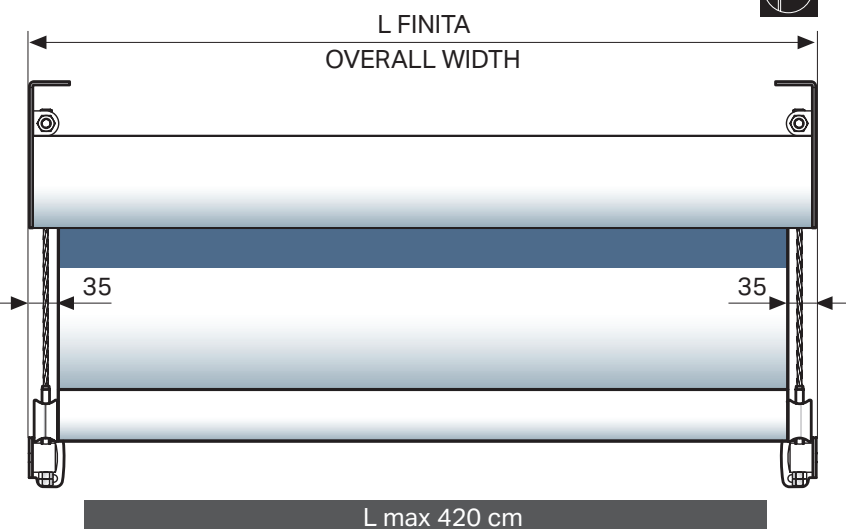
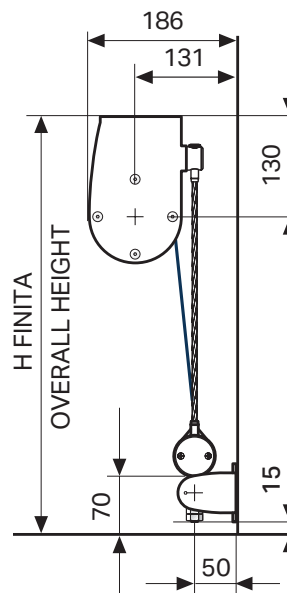
1:10

VERSION E



1:10

VERSION F



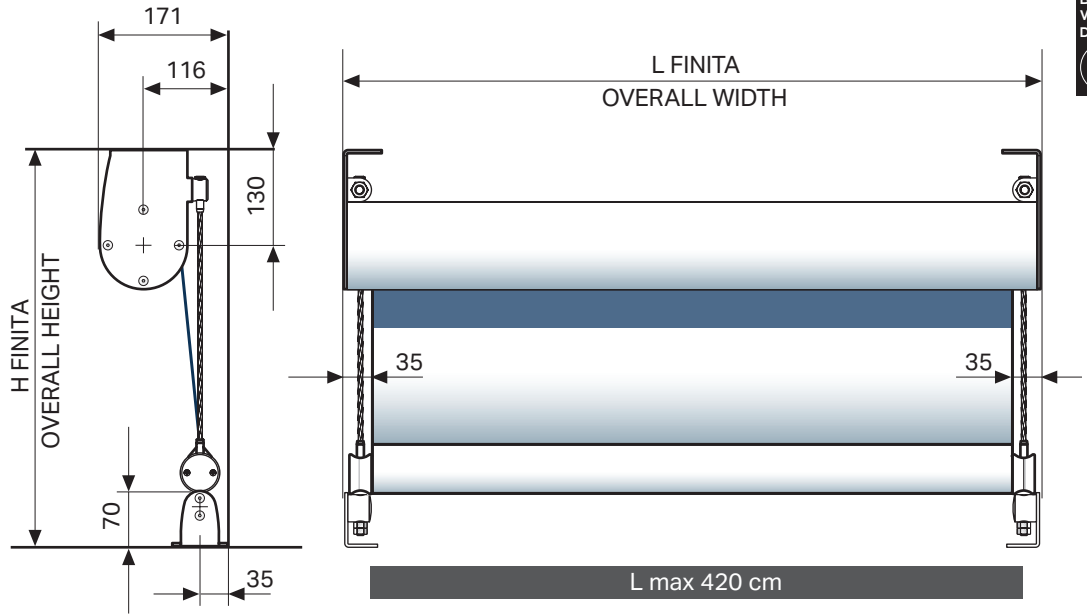
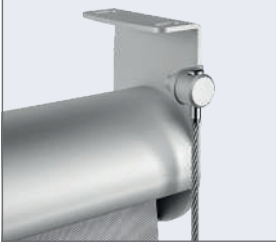
1:10



7.3.154

Rollbox serie 4110-4130

VERSION G



1:10





7.3.156

Rollbox serie 4110-4130

ROLLBOX 4110

CE Classe 3

