

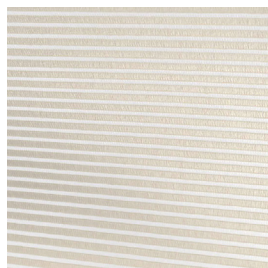
# Tratto F.R.



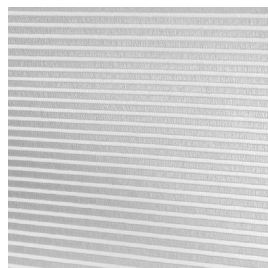
**TX/3741/01**



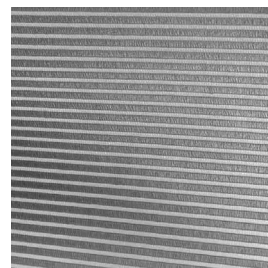
**TX/3741/02**



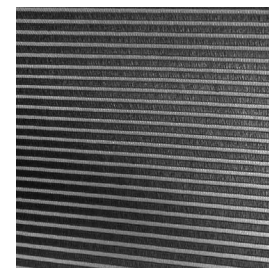
**TX/3741/04**



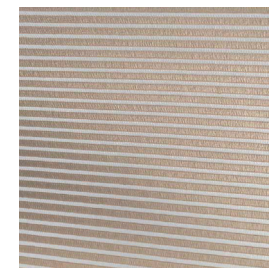
**TX/3741/05**




















**TX/3741/06**














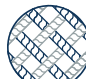








**TX/3741/07**



Ref.	 cm	 mm	 g/m²														
TX/3741/01	300	0,34	118	100% PL Trevira CS	Classe 1 (I), M1 (F), B1 (D), BS (GB), NFPA 701 (US), IMO, EN 13773 Class 1 (EU), EN 13501-1 B-s1,d0	Trasparente	OEKO-TEX	5/7	No	Si	29,00	59	39	2	59	0,48	58
TX/3741/02	300	0,34	118	100% PL Trevira CS	Classe 1 (I), M1 (F), B1 (D), BS (GB), NFPA 701 (US), IMO, EN 13773 Class 1 (EU), EN 13501-1 B-s1,d0	Trasparente	OEKO-TEX	5/7	No	Si	29,00	61	35	4	61	0,49	55
TX/3741/04	300	0,34	118	100% PL Trevira CS	Classe 1 (I), M1 (F), B1 (D), BS (GB), NFPA 701 (US), IMO, EN 13773 Class 1 (EU), EN 13501-1 B-s1,d0	Trasparente	OEKO-TEX	5/7	No	Si	29,00	58	29	13	52	0,51	57
TX/3741/05	300	0,34	118	100% PL Trevira CS	Classe 1 (I), M1 (F), B1 (D), BS (GB), NFPA 701 (US), IMO, EN 13773 Class 1 (EU), EN 13501-1 B-s1,d0	Trasparente	OEKO-TEX	5/7	No	Si	29,00	51	21	28	42	0,53	63
TX/3741/06	300	0,34	118	100% PL Trevira CS	Classe 1 (I), M1 (F), B1 (D), BS (GB), NFPA 701 (US), IMO, EN 13773 Class 1 (EU), EN 13501-1 B-s1,d0	Trasparente	OEKO-TEX	5/7	No	Si	29,00	47	21	32	32	0,53	67
TX/3741/07	300	0,34	118	100% PL Trevira CS	Classe 1 (I), M1 (F), B1 (D), BS (GB), NFPA 701 (US), IMO, EN 13773 Class 1 (EU), EN 13501-1 B-s1,d0	Trasparente	OEKO-TEX	5/7	No	Si	29,00	54	30	16	48	0,50	61

Tutti i coefficienti potrebbero avere una tolleranza di +/- 5%  
 Attenzione: La tonalità dei colori può variare leggermente da lotto a lotto

 Larghezza	 Composizione	 Certificazione	 IMO - Tessuti per settore navale	 Assorbimento solare	 G tot Type C GLASS	 Trama - Ordito N5 cm
 Spessore	 Ignifugo	 Solidità luce	 Trasmissione solare	 Trasmissione luce visibile	 Abbattimento UV	 Fattore di apertura
 Peso	 Trasparenza	 Saldabilità	 Riflessione	 Riflessione luce visibile	 Assorbimento acustico	

**MANUTENZIONE** Maneggiare il tessuto con cura: mani pulite ed asciutte. Non utilizzare solventi o sostanze abrasive che potrebbero danneggiare il tessuto. Durante la pulizia delle finestre, la tenda dovrà essere sollevata per evitare qualsiasi contatto diretto o indiretto di prodotti per la pulizia sul tessuto. Rimuovere la polvere con aspirapolvere o aria compressa evitare di tirare o allungare il tessuto. Per i tessuti rivestiti in PVC, pulire con una spugna leggermente umida, se necessario, con spugna imbevuta di acqua e sapone. Risciacquare con acqua pulita. Non strofinare con insistenza. Lasciare la tenda abbassata fino a completa asciugatura.