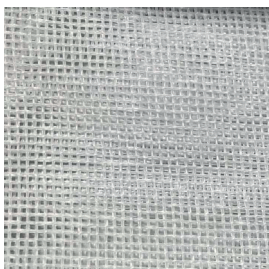


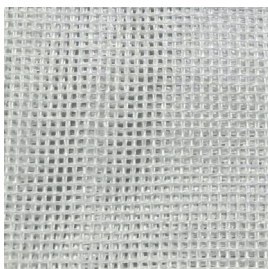
TEMPIO F.R.



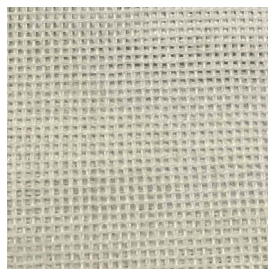
7095/01



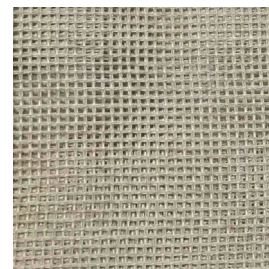
7095/02



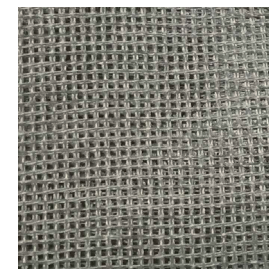
7095/03



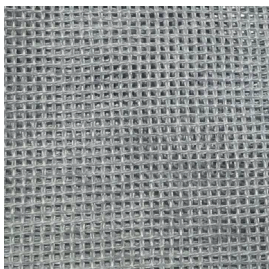
7095/04



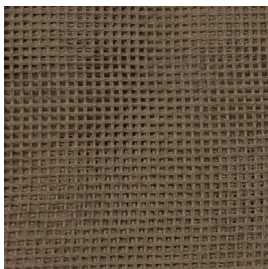
7095/05



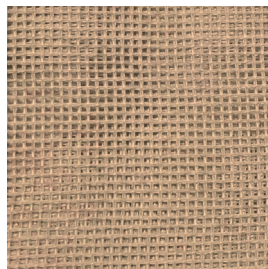
7095/06



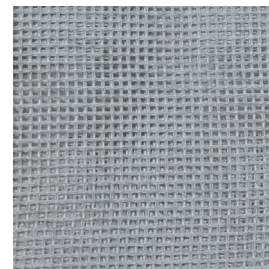
7095/07



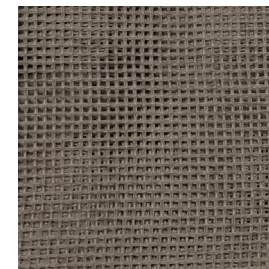
7095/08










7095/09



7095/10



Ref.	 cm	 g/m ²						Price category	Appearance
7095/01	300	102	100% PL FR	Class 1(I), M1 (F), B1&B2(D) BS 5867 (UK), EN 13773 (EU), IMO	Yes	Vertical ceiling/floor	Sheer	B	plain
7095/02	300	102	100% PL FR	Class 1(I), M1 (F), B1&B2(D) BS 5867 (UK), EN 13773 (EU), IMO	Yes	Vertical ceiling/floor	Sheer	B	plain
7095/03	300	102	100% PL FR	Class 1(I), M1 (F), B1&B2(D) BS 5867 (UK), EN 13773 (EU), IMO	Yes	Vertical ceiling/floor	Sheer	B	plain
7095/04	300	102	100% PL FR	Class 1(I), M1 (F), B1&B2(D) BS 5867 (UK), EN 13773 (EU), IMO	Yes	Vertical ceiling/floor	Sheer	B	plain
7095/05	300	102	100% PL FR	Class 1(I), M1 (F), B1&B2(D) BS 5867 (UK), EN 13773 (EU), IMO	Yes	Vertical ceiling/floor	Sheer	B	plain
7095/06	300	102	100% PL FR	Class 1(I), M1 (F), B1&B2(D) BS 5867 (UK), EN 13773 (EU), IMO	Yes	Vertical ceiling/floor	Sheer	B	plain
7095/07	300	102	100% PL FR	Class 1(I), M1 (F), B1&B2(D) BS 5867 (UK), EN 13773 (EU), IMO	Yes	Vertical ceiling/floor	Sheer	B	plain
7095/08	300	102	100% PL FR	Class 1(I), M1 (F), B1&B2(D) BS 5867 (UK), EN 13773 (EU), IMO	Yes	Vertical ceiling/floor	Sheer	B	plain
7095/09	300	102	100% PL FR	Class 1(I), M1 (F), B1&B2(D) BS 5867 (UK), EN 13773 (EU), IMO	Yes	Vertical ceiling/floor	Sheer	B	plain
7095/10	300	102	100% PL FR	Class 1(I), M1 (F), B1&B2(D) BS 5867 (UK), EN 13773 (EU), IMO	Yes	Vertical ceiling/floor	Sheer	B	plain

All coefficients have a possible tolerance of +/- 5%
Attention: colour shades may vary slightly from one dye-lot to another



TESSUTI & SARTORIA



Width



Weight



Flame retardant



Composition



Transparency



Upholstery



Leaded



Selvege

MAINTENANCE

WASH IN MAX 30°, DO NOT BLEACH, DO NOT TUMBLE DRY, IRON ON LOW SETTING, CAN BE DRY CLEANED, DRIP DRY, SHRINKAGE AFTER FIRST WASH 0-2% FOR FURTHER INDICATIONS PLEASE CONSULT THE INDIVIDUAL PRODUCT SPECIFICATIONS IN THE ATELIER CATALOGUE.