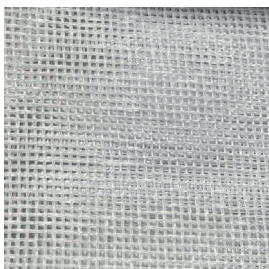


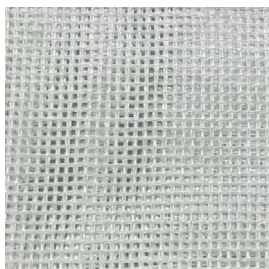
TEMPIO F.R.



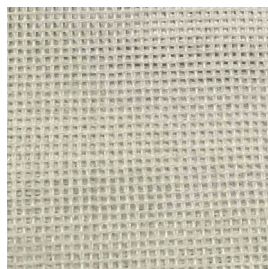
7095/01



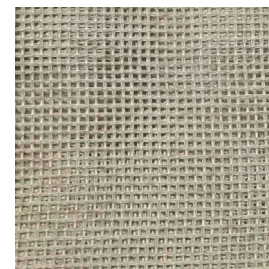
7095/02



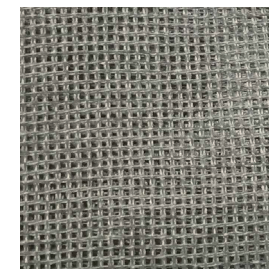
7095/03



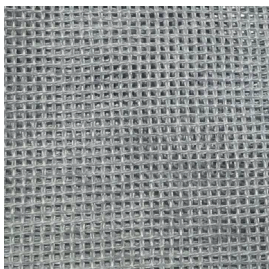
7095/04



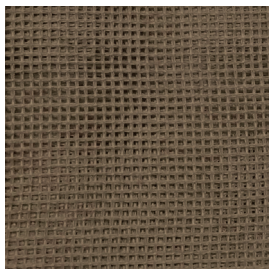
7095/05



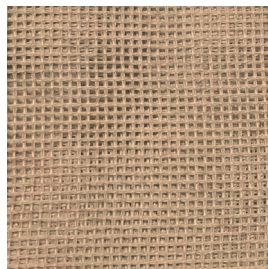
7095/06



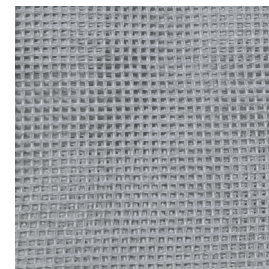
7095/07



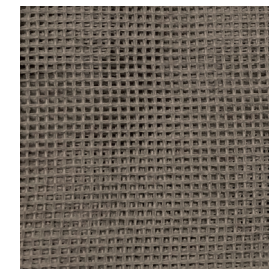
7095/08










7095/09



7095/10



Ref.	 cm	 g/m ²						Categoria Prezzo	Aspetto
7095/01	300	102	100% PL FR	Class 1(I), M1 (F), B1&B2(D) BS 5867 (UK), EN 13773 (EU), IMO	Si	Verticale - soffitto/pavimento	Trasparente	B	Unito
7095/02	300	102	100% PL FR	Class 1(I), M1 (F), B1&B2(D) BS 5867 (UK), EN 13773 (EU), IMO	Si	Verticale - soffitto/pavimento	Trasparente	B	Unito
7095/03	300	102	100% PL FR	Class 1(I), M1 (F), B1&B2(D) BS 5867 (UK), EN 13773 (EU), IMO	Si	Verticale - soffitto/pavimento	Trasparente	B	Unito
7095/04	300	102	100% PL FR	Class 1(I), M1 (F), B1&B2(D) BS 5867 (UK), EN 13773 (EU), IMO	Si	Verticale - soffitto/pavimento	Trasparente	B	Unito
7095/05	300	102	100% PL FR	Class 1(I), M1 (F), B1&B2(D) BS 5867 (UK), EN 13773 (EU), IMO	Si	Verticale - soffitto/pavimento	Trasparente	B	Unito
7095/06	300	102	100% PL FR	Class 1(I), M1 (F), B1&B2(D) BS 5867 (UK), EN 13773 (EU), IMO	Si	Verticale - soffitto/pavimento	Trasparente	B	Unito
7095/07	300	102	100% PL FR	Class 1(I), M1 (F), B1&B2(D) BS 5867 (UK), EN 13773 (EU), IMO	Si	Verticale - soffitto/pavimento	Trasparente	B	Unito
7095/08	300	102	100% PL FR	Class 1(I), M1 (F), B1&B2(D) BS 5867 (UK), EN 13773 (EU), IMO	Si	Verticale - soffitto/pavimento	Trasparente	B	Unito
7095/09	300	102	100% PL FR	Class 1(I), M1 (F), B1&B2(D) BS 5867 (UK), EN 13773 (EU), IMO	Si	Verticale - soffitto/pavimento	Trasparente	B	Unito
7095/10	300	102	100% PL FR	Class 1(I), M1 (F), B1&B2(D) BS 5867 (UK), EN 13773 (EU), IMO	Si	Verticale - soffitto/pavimento	Trasparente	B	Unito

Tutti i coefficienti potrebbero avere una tolleranza di +/- 5%
 Attenzione: La tonalità dei colori può variare leggermente da lotto a lotto



TESSUTI & SARTORIA



Larghezza



Peso



Ignifugo



Composizione



Trasparenza



Imbottito



Piombato



Cimosa

MANUTENZIONE

IN ACQUA A 30° MAX, NO CANDEGGIO, NO TAMBURO, FERRO A 1, SÌ A SECCO, STENDERE APPESO