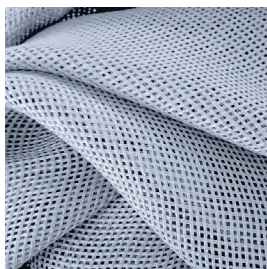


SIGMA F.R.



7112/01



7112/02



7112/03



7112/04



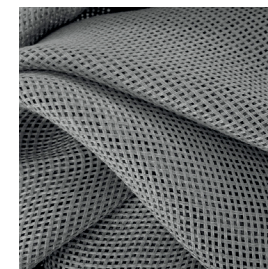
7112/05



7112/06



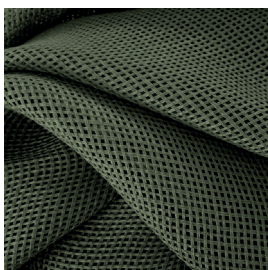
7112/07



7112/08



7112/09



7112/10



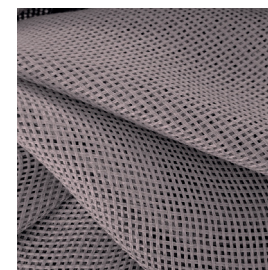
7112/11



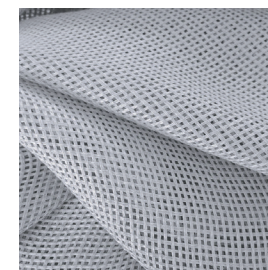
7112/12



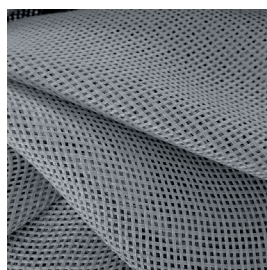
7112/13



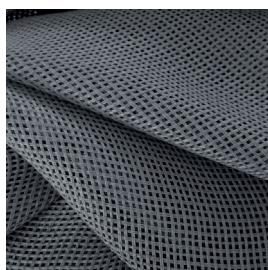
7112/14



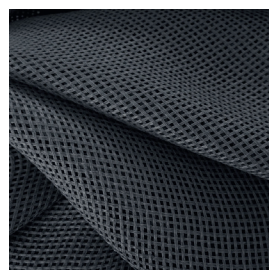
7112/15



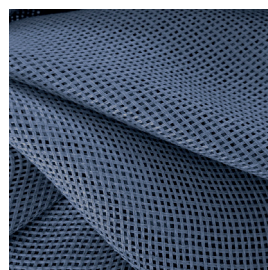
7112/16



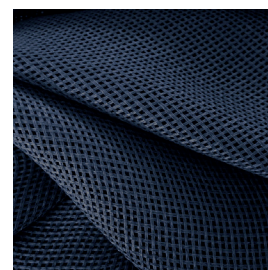
7112/17



7112/18



7112/19



Ref.	cm	g/m ²						Price category	Appearance
7112/01	310	155	100% PL FR	Class 1(I), M1 (F), B1&B2(D) BS 5867 (UK),EN 13773 (EU), IMO	No	Vertical ceiling/floor	Sheer	C	plain
7112/09	310	155	100% PL FR	Class 1(I), M1 (F), B1&B2(D) BS 5867 (UK),EN 13773 (EU), IMO	No	Vertical ceiling/floor	Sheer	C	plain
7112/10	310	155	100% PL FR	Class 1(I), M1 (F), B1&B2(D) BS 5867 (UK),EN 13773 (EU), IMO	No	Vertical ceiling/floor	Sheer	C	plain
7112/11	310	155	100% PL FR	Class 1(I), M1 (F), B1&B2(D) BS 5867 (UK),EN 13773 (EU), IMO	No	Vertical ceiling/floor	Sheer	C	plain
7112/12	310	155	100% PL FR	Class 1(I), M1 (F), B1&B2(D) BS 5867 (UK),EN 13773 (EU), IMO	No	Vertical ceiling/floor	Sheer	C	plain
7112/02	310	155	100% PL FR	Class 1(I), M1 (F), B1&B2(D) BS 5867 (UK),EN 13773 (EU), IMO	No	Vertical ceiling/floor	Sheer	C	plain
7112/03	310	155	100% PL FR	Class 1(I), M1 (F), B1&B2(D) BS 5867 (UK),EN 13773 (EU), IMO	No	Vertical ceiling/floor	Sheer	C	plain
7112/04	310	155	100% PL FR	Class 1(I), M1 (F), B1&B2(D) BS 5867 (UK),EN 13773 (EU), IMO	No	Vertical ceiling/floor	Sheer	C	plain
7112/05	310	155	100% PL FR	Class 1(I), M1 (F), B1&B2(D) BS 5867 (UK),EN 13773 (EU), IMO	No	Vertical ceiling/floor	Sheer	C	plain
7112/06	310	155	100% PL FR	Class 1(I), M1 (F), B1&B2(D) BS 5867 (UK),EN 13773 (EU), IMO	No	Vertical ceiling/floor	Sheer	C	plain
7112/07	310	155	100% PL FR	Class 1(I), M1 (F), B1&B2(D) BS 5867 (UK),EN 13773 (EU), IMO	No	Vertical ceiling/floor	Sheer	C	plain
7112/13	310	155	100% PL FR	Class 1(I), M1 (F), B1&B2(D) BS 5867 (UK),EN 13773 (EU), IMO	No	Vertical ceiling/floor	Sheer	C	plain

All coefficients have a possible tolerance of +/- 5%
Attention: colour shades may vary slightly from one dye-lot to another

Ref.	 cm	 g/m ²						Price category	Appearance
7112/14	310	155	100% PL FR	Class 1(I), M1 (F), B1&B2(D) BS 5867 (UK),EN 13773 (EU), IMO	No	Vertical ceiling/floor	Sheer	C	plain
7112/15	310	155	100% PL FR	Class 1(I), M1 (F), B1&B2(D) BS 5867 (UK),EN 13773 (EU), IMO	No	Vertical ceiling/floor	Sheer	C	plain
7112/16	310	155	100% PL FR	Class 1(I), M1 (F), B1&B2(D) BS 5867 (UK),EN 13773 (EU), IMO	No	Vertical ceiling/floor	Sheer	C	plain
7112/17	310	155	100% PL FR	Class 1(I), M1 (F), B1&B2(D) BS 5867 (UK),EN 13773 (EU), IMO	No	Vertical ceiling/floor	Sheer	C	plain
7112/18	310	155	100% PL FR	Class 1(I), M1 (F), B1&B2(D) BS 5867 (UK),EN 13773 (EU), IMO	No	Vertical ceiling/floor	Sheer	C	plain
7112/19	310	155	100% PL FR	Class 1(I), M1 (F), B1&B2(D) BS 5867 (UK),EN 13773 (EU), IMO	No	Vertical ceiling/floor	Sheer	C	plain
7112/08	310	155	100% PL FR	Class 1(I), M1 (F), B1&B2(D) BS 5867 (UK),EN 13773 (EU), IMO	No	Vertical ceiling/floor	Sheer	C	plain

All coefficients have a possible tolerance of +/- 5%
Attention: colour shades may vary slightly from one dye-lot to another



TESSUTI & SARTORIA



Width



Weight



Flame retardant



Composition



Transparency



Upholstery



Leaded



Selvege

MAINTENANCE

WASH IN MAX 30°, DO NOT BLEACH, DO NOT TUMBLE DRY, IRON ON LOW SETTING, CAN BE DRY CLEANED, DRIP DRY, SHRINKAGE AFTER FIRST WASH 0-2% FOR FURTHER INDICATIONS PLEASE CONSULT THE INDIVIDUAL PRODUCT SPECIFICATIONS IN THE ATELIER CATALOGUE.