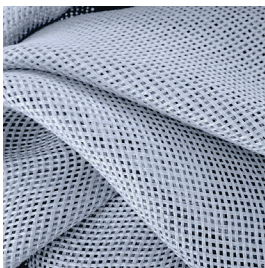


SIGMA F.R.



7112/01



7112/02



7112/03



7112/04



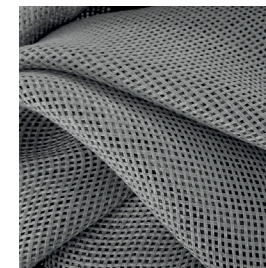
7112/05



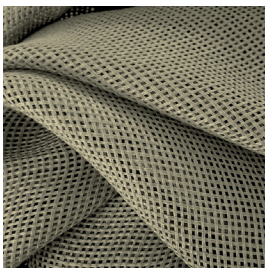
7112/06



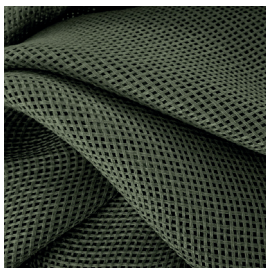
7112/07



7112/08



7112/09



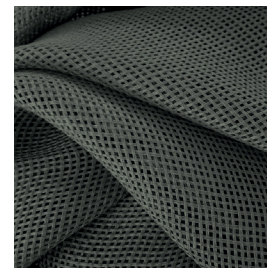
7112/10



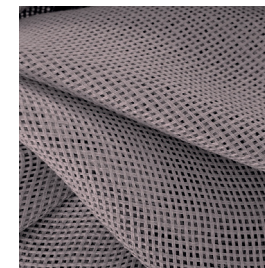
7112/11



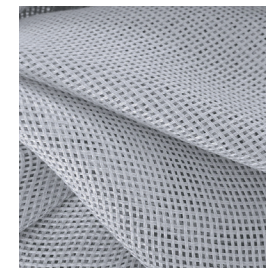
7112/12



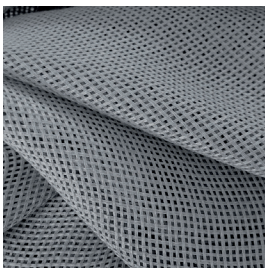
7112/13



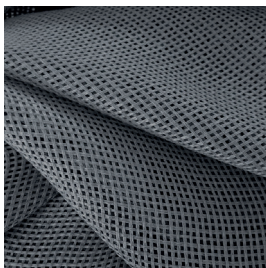
7112/14



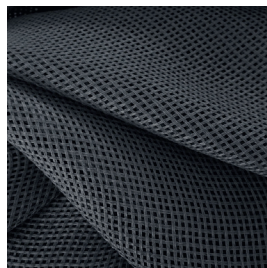
7112/15



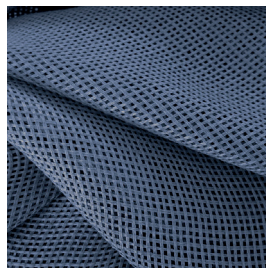
7112/16



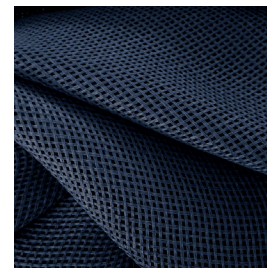
7112/17










7112/18









7112/19



Ref.	 cm	 g/m <sup>2</sup>						Categoria Prezzo	Aspetto
7112/01	310	155	100% PL FR	Class 1(I), M1 (F), B1&B2(D) BS 5867 (UK),EN 13773 (EU), IMO	No	Verticale - soffitto/pavimento	Trasparente	C	Unito
7112/02	310	155	100% PL FR	Class 1(I), M1 (F), B1&B2(D) BS 5867 (UK),EN 13773 (EU), IMO	No	Verticale - soffitto/pavimento	Trasparente	C	Unito
7112/03	310	155	100% PL FR	Class 1(I), M1 (F), B1&B2(D) BS 5867 (UK),EN 13773 (EU), IMO	No	Verticale - soffitto/pavimento	Trasparente	C	Unito
7112/04	310	155	100% PL FR	Class 1(I), M1 (F), B1&B2(D) BS 5867 (UK),EN 13773 (EU), IMO	No	Verticale - soffitto/pavimento	Trasparente	C	Unito
7112/05	310	155	100% PL FR	Class 1(I), M1 (F), B1&B2(D) BS 5867 (UK),EN 13773 (EU), IMO	No	Verticale - soffitto/pavimento	Trasparente	C	Unito
7112/06	310	155	100% PL FR	Class 1(I), M1 (F), B1&B2(D) BS 5867 (UK),EN 13773 (EU), IMO	No	Verticale - soffitto/pavimento	Trasparente	C	Unito
7112/07	310	155	100% PL FR	Class 1(I), M1 (F), B1&B2(D) BS 5867 (UK),EN 13773 (EU), IMO	No	Verticale - soffitto/pavimento	Trasparente	C	Unito
7112/08	310	155	100% PL FR	Class 1(I), M1 (F), B1&B2(D) BS 5867 (UK),EN 13773 (EU), IMO	No	Verticale - soffitto/pavimento	Trasparente	C	Unito
7112/09	310	155	100% PL FR	Class 1(I), M1 (F), B1&B2(D) BS 5867 (UK),EN 13773 (EU), IMO	No	Verticale - soffitto/pavimento	Trasparente	C	Unito
7112/10	310	155	100% PL FR	Class 1(I), M1 (F), B1&B2(D) BS 5867 (UK),EN 13773 (EU), IMO	No	Verticale - soffitto/pavimento	Trasparente	C	Unito
7112/11	310	155	100% PL FR	Class 1(I), M1 (F), B1&B2(D) BS 5867 (UK),EN 13773 (EU), IMO	No	Verticale - soffitto/pavimento	Trasparente	C	Unito
7112/12	310	155	100% PL FR	Class 1(I), M1 (F), B1&B2(D) BS 5867 (UK),EN 13773 (EU), IMO	No	Verticale - soffitto/pavimento	Trasparente	C	Unito

Tutti i coefficienti potrebbero avere una tolleranza di +/- 5%  
 Attenzione: La tonalità dei colori può variare leggermente da lotto a lotto

Ref.	 cm	 g/m <sup>2</sup>						Categoria Prezzo	Aspetto
7112/13	310	155	100% PL FR	Class 1(I), M1 (F), B1&B2(D) BS 5867 (UK),EN 13773 (EU), IMO	No	Verticale - soffitto/ pavimento	Trasparente	C	Unito
7112/14	310	155	100% PL FR	Class 1(I), M1 (F), B1&B2(D) BS 5867 (UK),EN 13773 (EU), IMO	No	Verticale - soffitto/ pavimento	Trasparente	C	Unito
7112/15	310	155	100% PL FR	Class 1(I), M1 (F), B1&B2(D) BS 5867 (UK),EN 13773 (EU), IMO	No	Verticale - soffitto/ pavimento	Trasparente	C	Unito
7112/16	310	155	100% PL FR	Class 1(I), M1 (F), B1&B2(D) BS 5867 (UK),EN 13773 (EU), IMO	No	Verticale - soffitto/ pavimento	Trasparente	C	Unito
7112/17	310	155	100% PL FR	Class 1(I), M1 (F), B1&B2(D) BS 5867 (UK),EN 13773 (EU), IMO	No	Verticale - soffitto/ pavimento	Trasparente	C	Unito
7112/18	310	155	100% PL FR	Class 1(I), M1 (F), B1&B2(D) BS 5867 (UK),EN 13773 (EU), IMO	No	Verticale - soffitto/ pavimento	Trasparente	C	Unito
7112/19	310	155	100% PL FR	Class 1(I), M1 (F), B1&B2(D) BS 5867 (UK),EN 13773 (EU), IMO	No	Verticale - soffitto/ pavimento	Trasparente	C	Unito

Tutti i coefficienti potrebbero avere una tolleranza di +/- 5%  
Attenzione: La tonalità dei colori può variare leggermente da lotto a lotto



TESSUTI &amp; SARTORIA



Larghezza



Peso



Ignifugo



Composizione



Trasparenza



Imbottito



Piombato



Cimosa

**MANUTENZIONE**

IN ACQUA A 30° MAX, NO  
CANDEGGIO, NO TAMBURIO,  
FERRO A 1, SÌ A SECCO,  
STENDERE APPESO