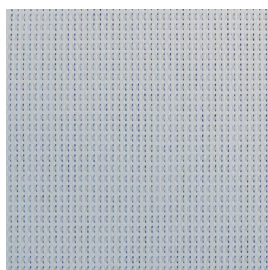


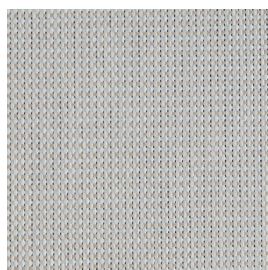
Screen P33 Metal F.R.



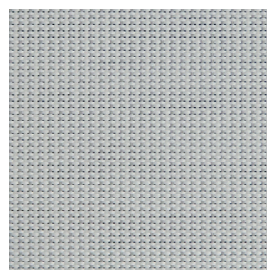
PM/331



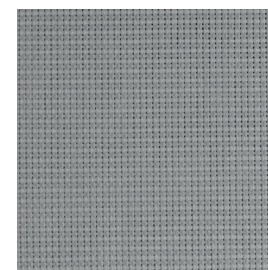
PM/332



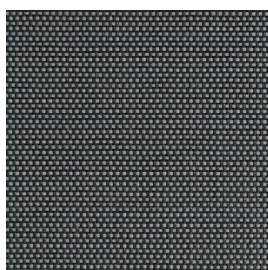
PM/333



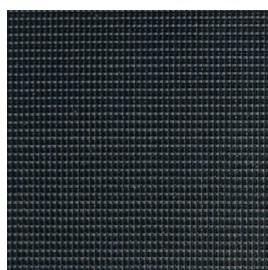
PM/334



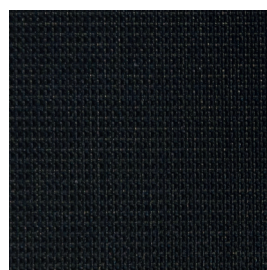
PM/335



PM/336



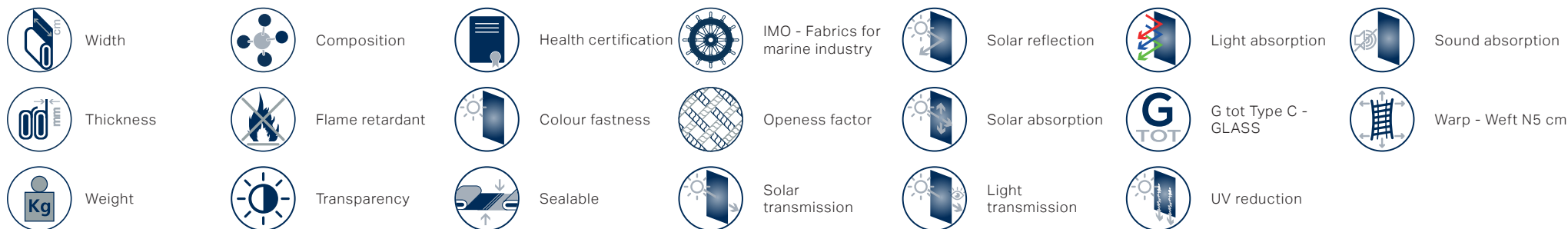
PM/337





PM/331	285	0,45	325	35%PL 65% PVC	Classe 1 (I), B1 (D), NFPA 701 (US), M2 (FR) C S2 D0 (EU)	Low Transparent	ANTIBACTERIAL, GREENGUARD, OEKO-TEX, REACH	7	heat	No	3.00	4	72	24	7	70	0,33	94	150	120
PM/332	285	0,45	325	35%PL 65% PVC	Classe 1 (I), B1 (D), NFPA 701 (US), M2 (FR) C S2 D0 (EU)	Low Transparent	ANTIBACTERIAL, GREENGUARD, OEKO-TEX, REACH	7	heat	No	3.00	4	71	25	7	70	0,34	95	150	120
PM/333	285	0,45	325	35%PL 65% PVC	Classe 1 (I), B1 (D), NFPA 701 (US), M2 (FR) C S2 D0 (EU)	Low Transparent	ANTIBACTERIAL, GREENGUARD, OEKO-TEX, REACH	7	heat	No	3.00	3	72	25	5	70	0,33	95	150	120
PM/334	285	0,45	325	35%PL 65% PVC	Classe 1 (I), B1 (D), NFPA 701 (US), M2 (FR) C S2 D0 (EU)	Low Transparent	ANTIBACTERIAL, GREENGUARD, OEKO-TEX, REACH	7	heat	No	3.00	4	70	26	5	70	0,34	96	150	120
PM/335	285	0,45	325	35%PL 65% PVC	Classe 1 (I), B1 (D), NFPA 701 (US), M2 (FR) C S2 D0 (EU)	Low Transparent	ANTIBACTERIAL, GREENGUARD, OEKO-TEX, REACH	7	heat	No	3.00	3	72	25	6	69	0,33	96	150	120
PM/336	285	0,45	325	35%PL 65% PVC	Classe 1 (I), B1 (D), NFPA 701 (US), M2 (FR) C S2 D0 (EU)	Low Transparent	ANTIBACTERIAL, GREENGUARD, OEKO-TEX, REACH	7	heat	No	3.00	3	72	25	5	63	0,33	96	150	120
PM/337	285	0,45	325	35%PL 65% PVC	Classe 1 (I), B1 (D), NFPA 701 (US), M2 (FR) C S2 D0 (EU)	Low Transparent	ANTIBACTERIAL, GREENGUARD, OEKO-TEX, REACH	7	heat	No	3.00	4	72	24	4	71	0,33	97	150	120

All coefficients have a possible tolerance of +/- 5%
Attention: colour shades may vary slightly from one dye lot to another



MAINTENANCE HANDLE THE FABRIC WITH CARE, USING CLEAN DRY HANDS. DO NOT USE SOLVENTS OR ANY ABRASIVE SUBSTANCES THAT MAY DAMAGE THE FABRIC. WHEN CLEANING WINDOWS THE BLIND MUST BE RAISED TO AVOID ANY DIRECT OR INDIRECT SPRAY OF CLEANING PRODUCTS. REMOVE THE DUST WITH A VACUUM CLEANER OR USING COMPRESSED AIR, AVOID PULLING OR STRETCHING FABRIC. ONLY FOR PVC COATED PRODUCTS, CLEAN WITH A DAMP CLOTH OR A SPONGE DIPPED IN SOAPY WATER IF NECESSARY. RINSE WITH CLEAN WATER. DO NOT RUB. LEAVE THE BLIND DOWN UNTIL COMPLETELY DRY.