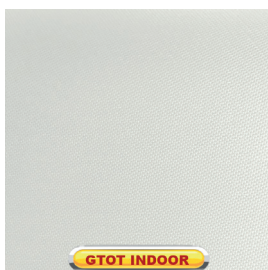


# Screen G5 F.R.

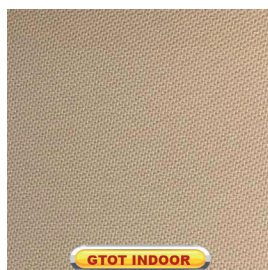


**G/530**



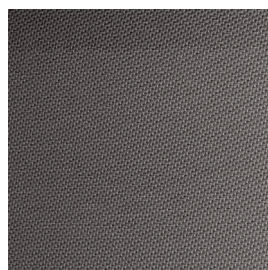
GTOT INDOOR

**G/531**

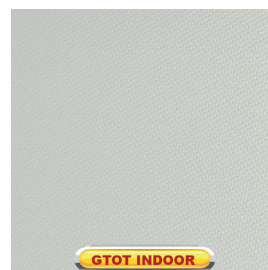


GTOT INDOOR

**G/532**

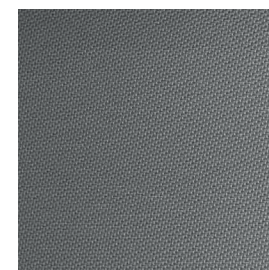


**G/533**

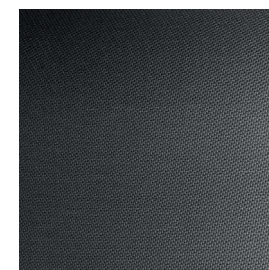


GTOT INDOOR

**G/534**



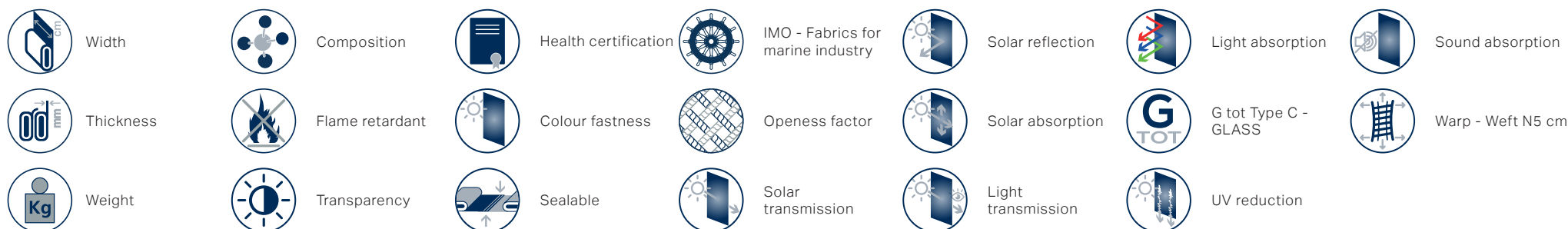
**G/535**





G/530	250	0,58	425	36% FV 64% PVC	Euroclass C-s3-d0(EU), Classe 1 (I), M1(F),B1(D)BS(GB),NFPA 701 (US), IMO	Low Transparent	ANTIBACTERIAL, GREENGUARD GOLD, REACH	7/8	heat	Yes	3.00	22	66	12	21	0,30	97	160	160
G/531	250	0,58	425	36% FV 64% PVC	Euroclass C-s3-d0(EU), Classe 1 (I), M1(F),B1(D)BS(GB),NFPA 701 (US), IMO	Low Transparent	ANTIBACTERIAL, GREENGUARD GOLD, REACH	7/8	heat	Yes	3.00	15	57	28	12	0,34	97	160	160
G/532	250	0,58	425	36% FV 64% PVC	Euroclass C-s3-d0(EU), Classe 1 (I), M1(F),B1(D)BS(GB),NFPA 701 (US), IMO	Low Transparent	ANTIBACTERIAL, GREENGUARD GOLD, REACH	7/8	heat	Yes	3.00	7	48	45	6	0,37	97	160	160
G/533	250	0,58	425	36% FV 64% PVC	Euroclass C-s3-d0(EU), Classe 1 (I), M1(F),B1(D)BS(GB),NFPA 701 (US), IMO	Low Transparent	ANTIBACTERIAL, GREENGUARD GOLD, REACH	7/8	heat	Yes	3.00	15	58	27	14	0,34	97	160	160
G/534	250	0,58	425	36% FV 64% PVC	Euroclass C-s3-d0(EU), Classe 1 (I), M1(F),B1(D)BS(GB),NFPA 701 (US), IMO	Low Transparent	ANTIBACTERIAL, GREENGUARD GOLD, REACH	7/8	heat	Yes	3.00	11	53	36	8	0,36	97	160	160
G/535	250	0,58	425	36% FV 64% PVC	Euroclass C-s3-d0(EU), Classe 1 (I), M1(F),B1(D)BS(GB),NFPA 701 (US), IMO	Low Transparent	ANTIBACTERIAL, GREENGUARD GOLD, REACH	7/8	heat	Yes	3.00	7	47	46	6	0,37	97	160	160

All coefficients have a possible tolerance of +/- 5%  
 Attention: colour shades may vary slightly from one dye lot to another



**MAINTENANCE** HANDLE THE FABRIC WITH CARE, USING CLEAN DRY HANDS. DO NOT USE SOLVENTS OR ANY ABRASIVE SUBSTANCES THAT MAY DAMAGE THE FABRIC. WHEN CLEANING WINDOWS THE BLIND MUST BE RAISED TO AVOID ANY DIRECT OR INDIRECT SPRAY OF CLEANING PRODUCTS. REMOVE THE DUST WITH A VACUUM CLEANER OR USING COMPRESSED AIR, AVOID PULLING OR STRETCHING FABRIC. ONLY FOR PVC COATED PRODUCTS, CLEAN WITH A DAMP CLOTH OR A SPONGE DIPPED IN SOAPY WATER IF NECESSARY. RINSE WITH CLEAN WATER. DO NOT RUB. LEAVE THE BLIND DOWN UNTIL COMPLETELY DRY.