

Rigo cm 7,5/5,0



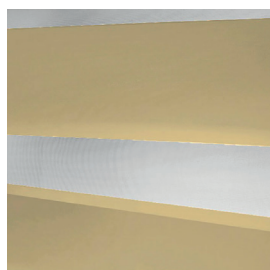
RI/701



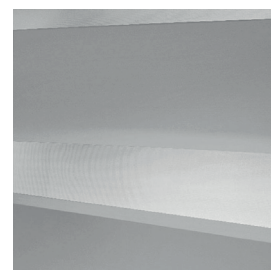
RI/702



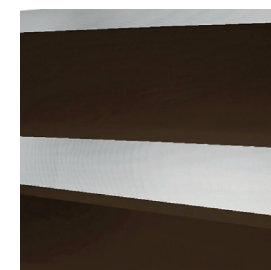
RI/703



RI/704



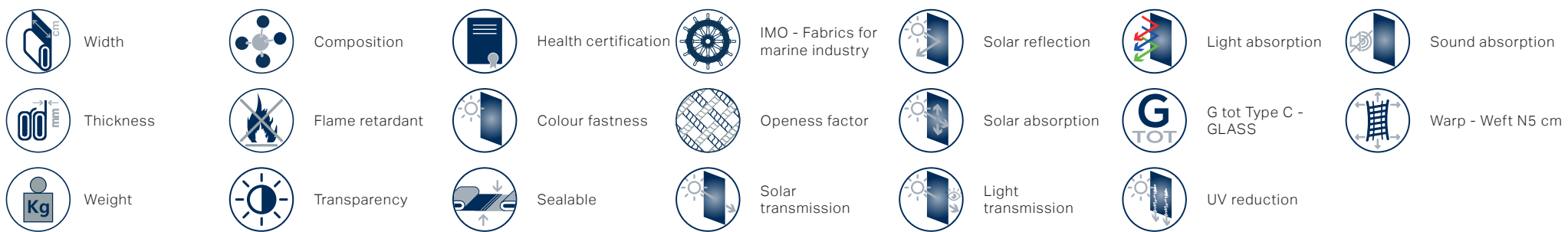
RI/705





Ref.	cm	mm	g/m ²	Composition	Health certification	IMO - Fabrics for marine industry	Solar reflection	Light absorption	Sound absorption	Thickness	Flame retardant	Colour fastness	Openess factor	Solar absorption	G tot Type C - GLASS	Warp - Weft N5 cm	Weight	Transparency	Sealable	Solar transmission	Light transmission	UV reduction	
RI/701	280	0,26	96	100% PL	Low Transparent	OEKO-TEX	No	No	37	57	6	36	60	0,46	99								
RI/702	280	0,26	96	100% PL	Low Transparent	OEKO-TEX	No	No	38	55	7	37	58	0,46	99								
RI/703	280	0,26	96	100% PL	Low Transparent	OEKO-TEX	No	No	29	49	22	20	43	0,47	99								
RI/704	280	0,26	96	100% PL	Low Transparent	OEKO-TEX	No	No	33	48	19	23	42	0,48	99								
RI/705	280	0,26	96	100% PL	Low Transparent	OEKO-TEX	No	No	30	45	25	1	21	0,50	99								

All coefficients have a possible tolerance of +/- 5%
 Attention: colour shades may vary slightly from one dye lot to another



MAINTENANCE HANDLE THE FABRIC WITH CARE, USING CLEAN DRY HANDS. DO NOT USE SOLVENTS OR ANY ABRASIVE SUBSTANCES THAT MAY DAMAGE THE FABRIC. WHEN CLEANING WINDOWS THE BLIND MUST BE RAISED TO AVOID ANY DIRECT OR INDIRECT SPRAY OF CLEANING PRODUCTS. REMOVE THE DUST WITH A VACUUM CLEANER OR USING COMPRESSED AIR, AVOID PULLING OR STRETCHING FABRIC. ONLY FOR PVC COATED PRODUCTS, CLEAN WITH A DAMP CLOTH OR A SPONGE DIPPED IN SOAPY WATER IF NECESSARY. RINSE WITH CLEAN WATER. DO NOT RUB. LEAVE THE BLIND DOWN UNTIL COMPLETELY DRY.