

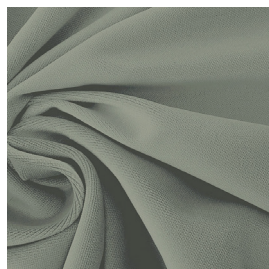
REGIO F.R.



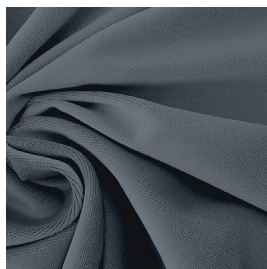
3482/01



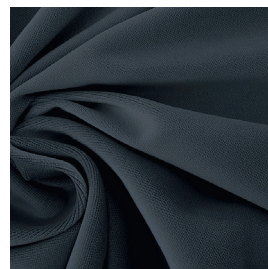
3482/02



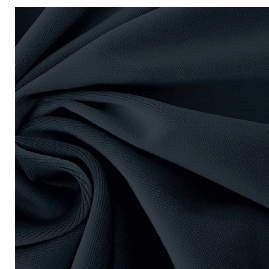
3482/03



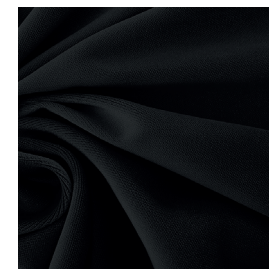
3482/04



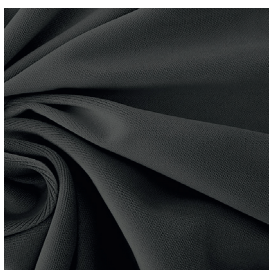
3482/05



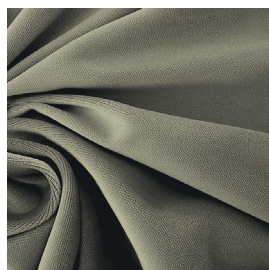
3482/06



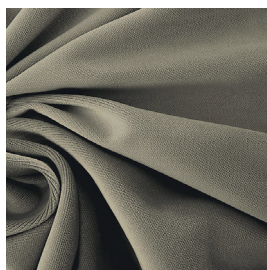
3482/07



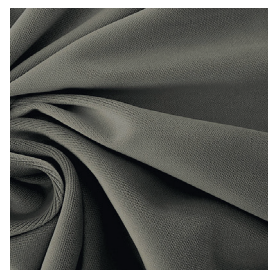
3482/08



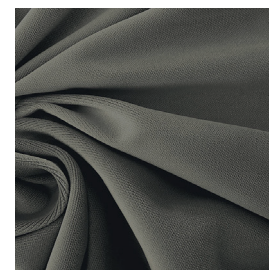
3482/09



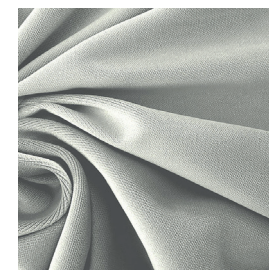
3482/10



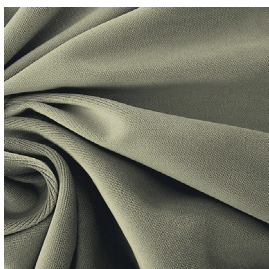
3482/11



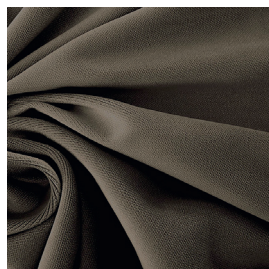
3482/12



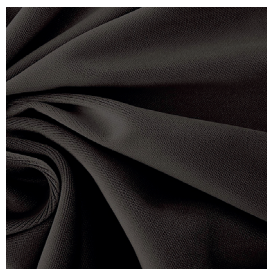
3482/13



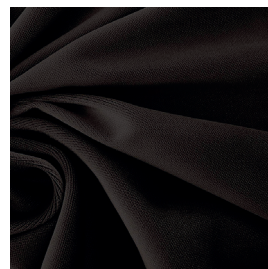
3482/14



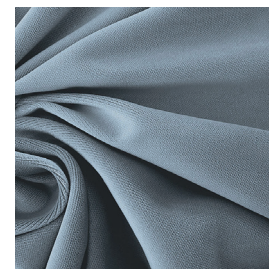
3482/15



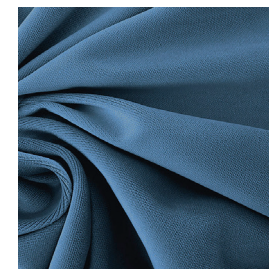
3482/16



3482/17



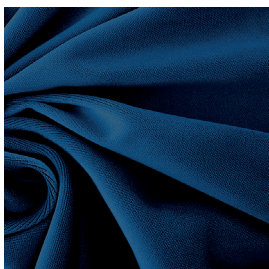
3482/18



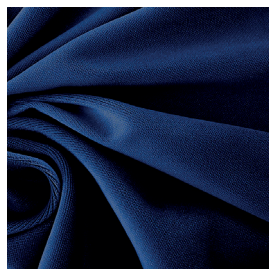
REGIO F.R.



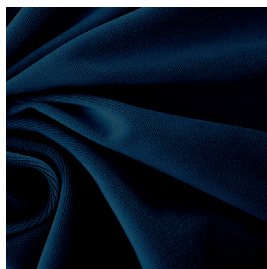
3482/19



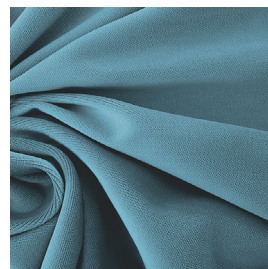
3482/20



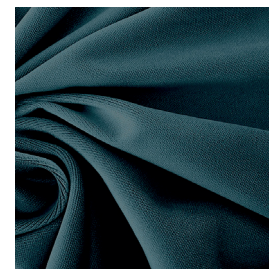
3482/21



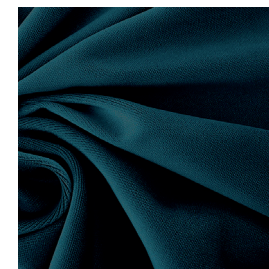
3482/22



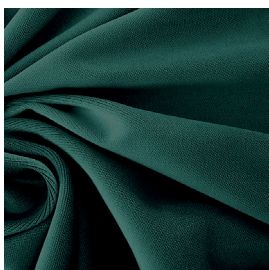
3482/23



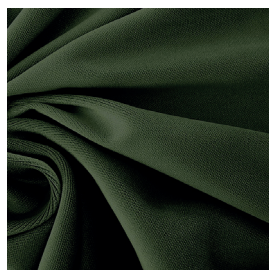
3482/24



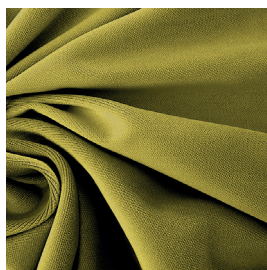
3482/25



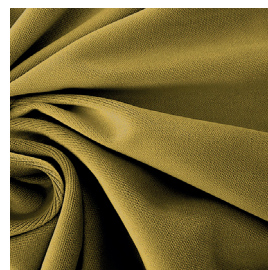
3482/26



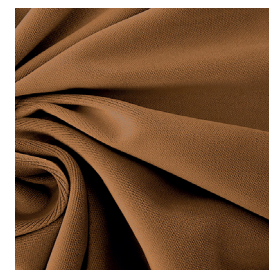
3482/27



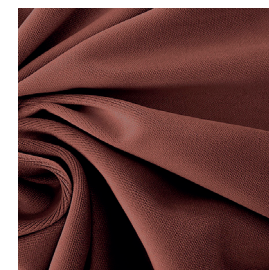
3482/28



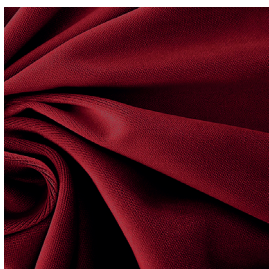
3482/29



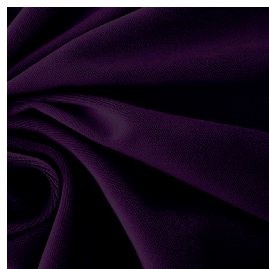
3482/30



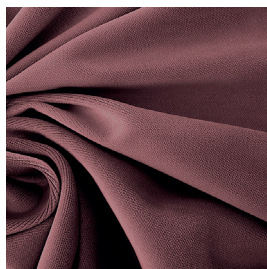
3482/31



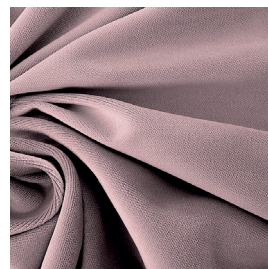
3482/32



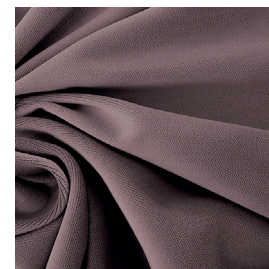
3482/33



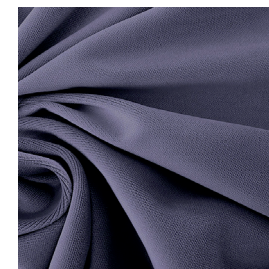
3482/34











3482/35



3482/36











Ref.	 cm	 g/m ²							Price category	Appearance
3482/01	142	406	100% PL F.R.	CLASS 1 (I), M1 (F), B1&B2 (D), IMO	No	Horizontal edge to edge	Dimout	Upholstery	D	plain
3482/02	142	406	100% PL F.R.	CLASS 1 (I), M1 (F), B1&B2 (D), IMO	No	Horizontal edge to edge	Dimout	Upholstery	D	plain
3482/03	142	406	100% PL F.R.	CLASS 1 (I), M1 (F), B1&B2 (D), IMO	No	Horizontal edge to edge	Dimout	Upholstery	D	plain
3482/04	142	406	100% PL F.R.	CLASS 1 (I), M1 (F), B1&B2 (D), IMO	No	Horizontal edge to edge	Dimout	Upholstery	D	plain
3482/05	142	406	100% PL F.R.	CLASS 1 (I), M1 (F), B1&B2 (D), IMO	No	Horizontal edge to edge	Dimout	Upholstery	D	plain
3482/06	142	406	100% PL F.R.	CLASS 1 (I), M1 (F), B1&B2 (D), IMO	No	Horizontal edge to edge	Dimout	Upholstery	D	plain
3482/07	142	406	100% PL F.R.	CLASS 1 (I), M1 (F), B1&B2 (D), IMO	No	Horizontal edge to edge	Dimout	Upholstery	D	plain
3482/08	142	406	100% PL F.R.	CLASS 1 (I), M1 (F), B1&B2 (D), IMO	No	Horizontal edge to edge	Dimout	Upholstery	D	plain
3482/09	142	406	100% PL F.R.	CLASS 1 (I), M1 (F), B1&B2 (D), IMO	No	Horizontal edge to edge	Dimout	Upholstery	D	plain
3482/10	142	406	100% PL F.R.	CLASS 1 (I), M1 (F), B1&B2 (D), IMO	No	Horizontal edge to edge	Dimout	Upholstery	D	plain
3482/11	142	406	100% PL F.R.	CLASS 1 (I), M1 (F), B1&B2 (D), IMO	No	Horizontal edge to edge	Dimout	Upholstery	D	plain
3482/12	142	406	100% PL F.R.	CLASS 1 (I), M1 (F), B1&B2 (D), IMO	No	Horizontal edge to edge	Dimout	Upholstery	D	plain
3482/13	142	406	100% PL F.R.	CLASS 1 (I), M1 (F), B1&B2 (D), IMO	No	Horizontal edge to edge	Dimout	Upholstery	D	plain
3482/14	142	406	100% PL F.R.	CLASS 1 (I), M1 (F), B1&B2 (D), IMO	No	Horizontal edge to edge	Dimout	Upholstery	D	plain
3482/15	142	406	100% PL F.R.	CLASS 1 (I), M1 (F), B1&B2 (D), IMO	No	Horizontal edge to edge	Dimout	Upholstery	D	plain
3482/16	142	406	100% PL F.R.	CLASS 1 (I), M1 (F), B1&B2 (D), IMO	No	Horizontal edge to edge	Dimout	Upholstery	D	plain

All coefficients have a possible tolerance of +/- 5%
 Attention: colour shades may vary slightly from one dye-lot to another

Ref.	cm	g/m ²							Price category	Appearance
3482/17	142	406	100% PL F.R.	CLASS 1 (I), M1 (F), B1&B2 (D), IMO	No	Horizontal edge to edge	Dimout	Upholstery	D	plain
3482/18	142	406	100% PL F.R.	CLASS 1 (I), M1 (F), B1&B2 (D), IMO	No	Horizontal edge to edge	Dimout	Upholstery	D	plain
3482/19	142	406	100% PL F.R.	CLASS 1 (I), M1 (F), B1&B2 (D), IMO	No	Horizontal edge to edge	Dimout	Upholstery	D	plain
3482/20	142	406	100% PL F.R.	CLASS 1 (I), M1 (F), B1&B2 (D), IMO	No	Horizontal edge to edge	Dimout	Upholstery	D	plain
3482/21	142	406	100% PL F.R.	CLASS 1 (I), M1 (F), B1&B2 (D), IMO	No	Horizontal edge to edge	Dimout	Upholstery	D	plain
3482/22	142	406	100% PL F.R.	CLASS 1 (I), M1 (F), B1&B2 (D), IMO	No	Horizontal edge to edge	Dimout	Upholstery	D	plain
3482/23	142	406	100% PL F.R.	CLASS 1 (I), M1 (F), B1&B2 (D), IMO	No	Horizontal edge to edge	Dimout	Upholstery	D	plain
3482/24	142	406	100% PL F.R.	CLASS 1 (I), M1 (F), B1&B2 (D), IMO	No	Horizontal edge to edge	Dimout	Upholstery	D	plain
3482/25	142	406	100% PL F.R.	CLASS 1 (I), M1 (F), B1&B2 (D), IMO	No	Horizontal edge to edge	Dimout	Upholstery	D	plain
3482/26	142	406	100% PL F.R.	CLASS 1 (I), M1 (F), B1&B2 (D), IMO	No	Horizontal edge to edge	Dimout	Upholstery	D	plain
3482/27	142	406	100% PL F.R.	CLASS 1 (I), M1 (F), B1&B2 (D), IMO	No	Horizontal edge to edge	Dimout	Upholstery	D	plain
3482/28	142	406	100% PL F.R.	CLASS 1 (I), M1 (F), B1&B2 (D), IMO	No	Horizontal edge to edge	Dimout	Upholstery	D	plain
3482/29	142	406	100% PL F.R.	CLASS 1 (I), M1 (F), B1&B2 (D), IMO	No	Horizontal edge to edge	Dimout	Upholstery	D	plain
3482/30	142	406	100% PL F.R.	CLASS 1 (I), M1 (F), B1&B2 (D), IMO	No	Horizontal edge to edge	Dimout	Upholstery	D	plain
3482/31	142	406	100% PL F.R.	CLASS 1 (I), M1 (F), B1&B2 (D), IMO	No	Horizontal edge to edge	Dimout	Upholstery	D	plain

All coefficients have a possible tolerance of +/- 5%
 Attention: colour shades may vary slightly from one dye-lot to another

Ref.	 cm	 g/m ²							Price category	Appearance
3482/32	142	406	100% PL F.R.	CLASS 1 (I), M1 (F), B1&B2 (D), IMO	No	Horizontal edge to edge	Dimout	Upholstery	D	plain
3482/33	142	406	100% PL F.R.	CLASS 1 (I), M1 (F), B1&B2 (D), IMO	No	Horizontal edge to edge	Dimout	Upholstery	D	plain
3482/34	142	406	100% PL F.R.	CLASS 1 (I), M1 (F), B1&B2 (D), IMO	No	Horizontal edge to edge	Dimout	Upholstery	D	plain
3482/35	142	406	100% PL F.R.	CLASS 1 (I), M1 (F), B1&B2 (D), IMO	No	Horizontal edge to edge	Dimout	Upholstery	D	plain
3482/36	142	406	100% PL F.R.	CLASS 1 (I), M1 (F), B1&B2 (D), IMO	No	Horizontal edge to edge	Dimout	Upholstery	D	plain

All coefficients have a possible tolerance of +/- 5%
 Attention: colour shades may vary slightly from one dye-lot to another



TESSUTI & SARTORIA



Width



Weight



Flame retardant



Composition



Transparency



Upholstery



Leaded



Selvedge

MAINTENANCE

WASH IN MAX 30°, DO NOT BLEACH, DO NOT TUMBLE DRY, IRON ON LOW SETTING, CAN BE DRY CLEANED, DRIP DRY, SHRINKAGE AFTER FIRST WASH 0-2% FOR FURTHER INDICATIONS PLEASE CONSULT THE INDIVIDUAL PRODUCT SPECIFICATIONS IN THE ATELIER CATALOGUE.