



TESSUTI & SARTORIA

ATELIER 1963 - REGIO F.R.

MOTTURA

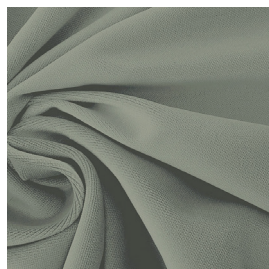
REGIO F.R.



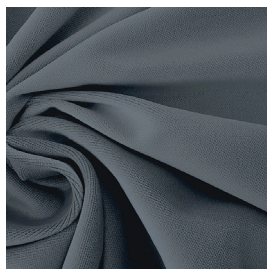
**3482/01**



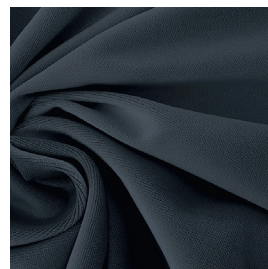
**3482/02**



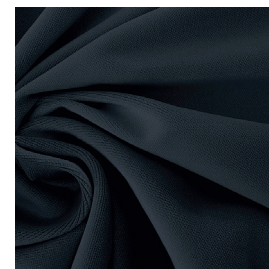
**3482/03**



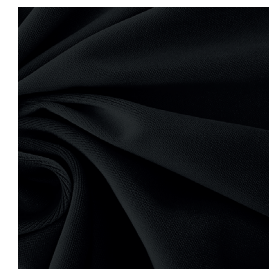
**3482/04**



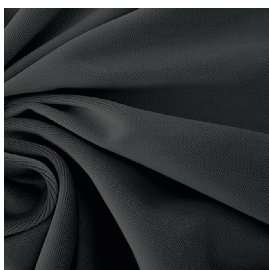
**3482/05**



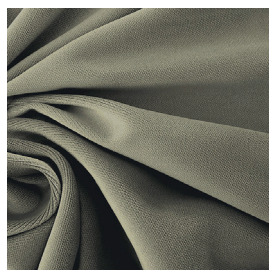
**3482/06**



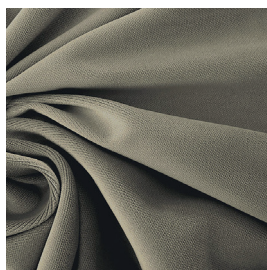
**3482/07**



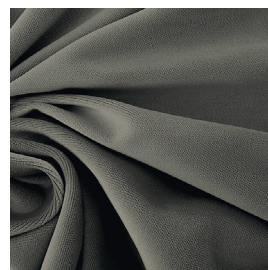
**3482/08**



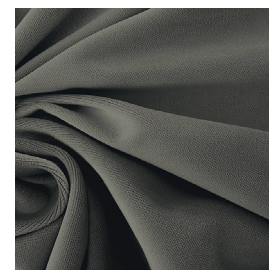
**3482/09**



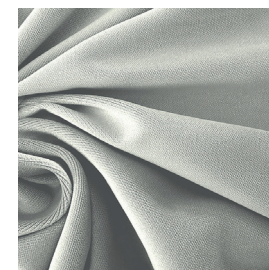
**3482/10**



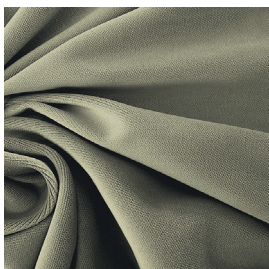
**3482/11**



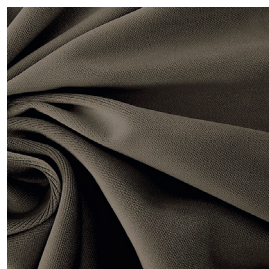
**3482/12**



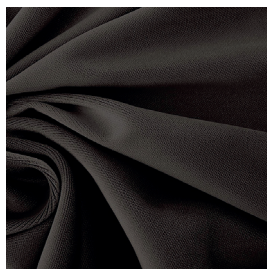
**3482/13**



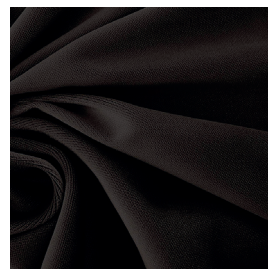
**3482/14**



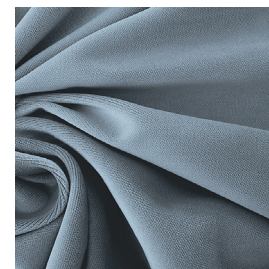
**3482/15**



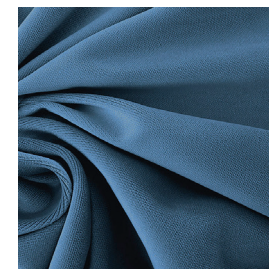
**3482/16**



**3482/17**



**3482/18**

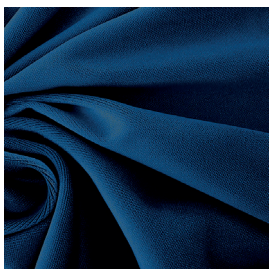




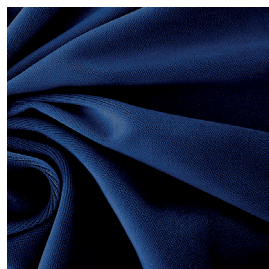
REGIO F.R.



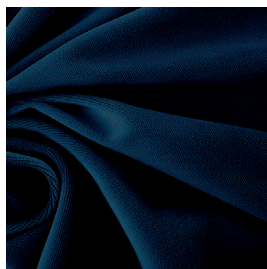
3482/19



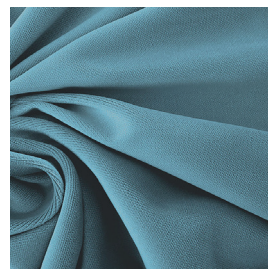
3482/20



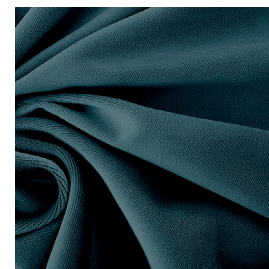
3482/21



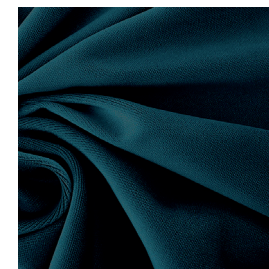
3482/22



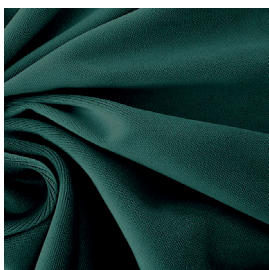
3482/23



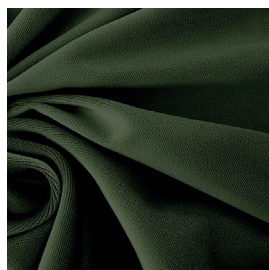
3482/24



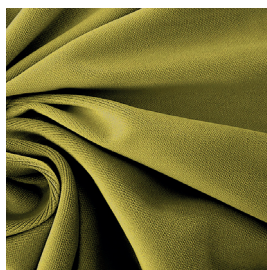
3482/25



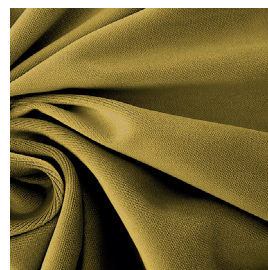
3482/26



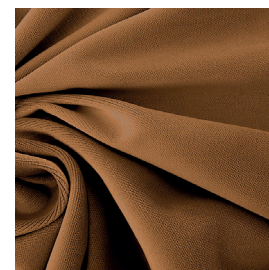
3482/27



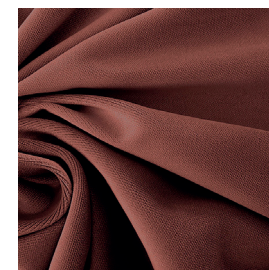
3482/28



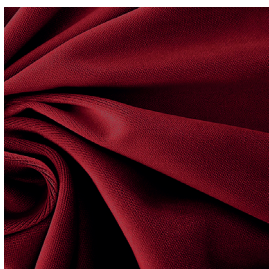
3482/29



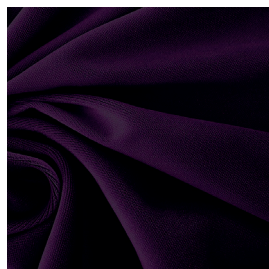
3482/30



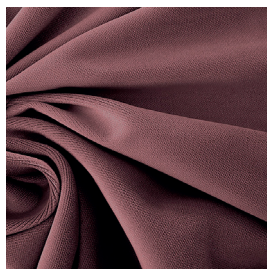
3482/31



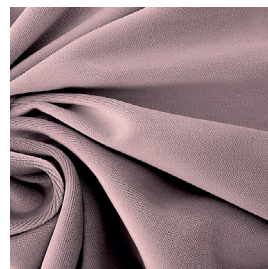
3482/32



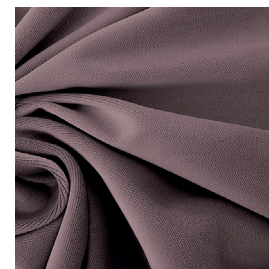
3482/33



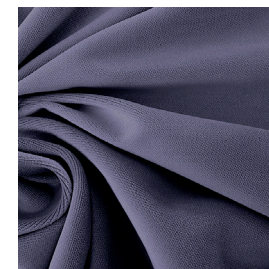
3482/34











3482/35











3482/36




Ref.	 cm	 g/m <sup>2</sup>							Categoria Prezzo	Aspetto
3482/01	142	406	100% PL F.R.	CLASS 1 (I), M1 (F), B1&B2 (D), IMO	No	Orizzontale - ai lati	Oscurante	Imbottito	D	Unito
3482/02	142	406	100% PL F.R.	CLASS 1 (I), M1 (F), B1&B2 (D), IMO	No	Orizzontale - ai lati	Oscurante	Imbottito	D	Unito
3482/03	142	406	100% PL F.R.	CLASS 1 (I), M1 (F), B1&B2 (D), IMO	No	Orizzontale - ai lati	Oscurante	Imbottito	D	Unito
3482/04	142	406	100% PL F.R.	CLASS 1 (I), M1 (F), B1&B2 (D), IMO	No	Orizzontale - ai lati	Oscurante	Imbottito	D	Unito
3482/05	142	406	100% PL F.R.	CLASS 1 (I), M1 (F), B1&B2 (D), IMO	No	Orizzontale - ai lati	Oscurante	Imbottito	D	Unito
3482/06	142	406	100% PL F.R.	CLASS 1 (I), M1 (F), B1&B2 (D), IMO	No	Orizzontale - ai lati	Oscurante	Imbottito	D	Unito
3482/07	142	406	100% PL F.R.	CLASS 1 (I), M1 (F), B1&B2 (D), IMO	No	Orizzontale - ai lati	Oscurante	Imbottito	D	Unito
3482/08	142	406	100% PL F.R.	CLASS 1 (I), M1 (F), B1&B2 (D), IMO	No	Orizzontale - ai lati	Oscurante	Imbottito	D	Unito
3482/09	142	406	100% PL F.R.	CLASS 1 (I), M1 (F), B1&B2 (D), IMO	No	Orizzontale - ai lati	Oscurante	Imbottito	D	Unito
3482/10	142	406	100% PL F.R.	CLASS 1 (I), M1 (F), B1&B2 (D), IMO	No	Orizzontale - ai lati	Oscurante	Imbottito	D	Unito
3482/11	142	406	100% PL F.R.	CLASS 1 (I), M1 (F), B1&B2 (D), IMO	No	Orizzontale - ai lati	Oscurante	Imbottito	D	Unito
3482/12	142	406	100% PL F.R.	CLASS 1 (I), M1 (F), B1&B2 (D), IMO	No	Orizzontale - ai lati	Oscurante	Imbottito	D	Unito
3482/13	142	406	100% PL F.R.	CLASS 1 (I), M1 (F), B1&B2 (D), IMO	No	Orizzontale - ai lati	Oscurante	Imbottito	D	Unito
3482/14	142	406	100% PL F.R.	CLASS 1 (I), M1 (F), B1&B2 (D), IMO	No	Orizzontale - ai lati	Oscurante	Imbottito	D	Unito

Tutti i coefficienti potrebbero avere una tolleranza di +/- 5%  
 Attenzione: La tonalità dei colori può variare leggermente da lotto a lotto

Ref.	 cm	 g/m <sup>2</sup>							Categoria Prezzo	Aspetto
3482/15	142	406	100% PL F.R.	CLASS 1 (I), M1 (F), B1&B2 (D), IMO	No	Orizzontale - ai lati	Oscurante	Imbottito	D	Unito
3482/16	142	406	100% PL F.R.	CLASS 1 (I), M1 (F), B1&B2 (D), IMO	No	Orizzontale - ai lati	Oscurante	Imbottito	D	Unito
3482/17	142	406	100% PL F.R.	CLASS 1 (I), M1 (F), B1&B2 (D), IMO	No	Orizzontale - ai lati	Oscurante	Imbottito	D	Unito
3482/18	142	406	100% PL F.R.	CLASS 1 (I), M1 (F), B1&B2 (D), IMO	No	Orizzontale - ai lati	Oscurante	Imbottito	D	Unito
3482/19	142	406	100% PL F.R.	CLASS 1 (I), M1 (F), B1&B2 (D), IMO	No	Orizzontale - ai lati	Oscurante	Imbottito	D	Unito
3482/20	142	406	100% PL F.R.	CLASS 1 (I), M1 (F), B1&B2 (D), IMO	No	Orizzontale - ai lati	Oscurante	Imbottito	D	Unito
3482/21	142	406	100% PL F.R.	CLASS 1 (I), M1 (F), B1&B2 (D), IMO	No	Orizzontale - ai lati	Oscurante	Imbottito	D	Unito
3482/22	142	406	100% PL F.R.	CLASS 1 (I), M1 (F), B1&B2 (D), IMO	No	Orizzontale - ai lati	Oscurante	Imbottito	D	Unito
3482/23	142	406	100% PL F.R.	CLASS 1 (I), M1 (F), B1&B2 (D), IMO	No	Orizzontale - ai lati	Oscurante	Imbottito	D	Unito
3482/24	142	406	100% PL F.R.	CLASS 1 (I), M1 (F), B1&B2 (D), IMO	No	Orizzontale - ai lati	Oscurante	Imbottito	D	Unito
3482/25	142	406	100% PL F.R.	CLASS 1 (I), M1 (F), B1&B2 (D), IMO	No	Orizzontale - ai lati	Oscurante	Imbottito	D	Unito
3482/26	142	406	100% PL F.R.	CLASS 1 (I), M1 (F), B1&B2 (D), IMO	No	Orizzontale - ai lati	Oscurante	Imbottito	D	Unito
3482/27	142	406	100% PL F.R.	CLASS 1 (I), M1 (F), B1&B2 (D), IMO	No	Orizzontale - ai lati	Oscurante	Imbottito	D	Unito
3482/28	142	406	100% PL F.R.	CLASS 1 (I), M1 (F), B1&B2 (D), IMO	No	Orizzontale - ai lati	Oscurante	Imbottito	D	Unito

Tutti i coefficienti potrebbero avere una tolleranza di +/- 5%  
 Attenzione: La tonalità dei colori può variare leggermente da lotto a lotto

Ref.	 cm	 g/m <sup>2</sup>							Categoria Prezzo	Aspetto
3482/29	142	406	100% PL F.R.	CLASS 1 (I), M1 (F), B1&B2 (D), IMO	No	Orizzontale - ai lati	Oscurante	Imbottito	D	Unito
3482/30	142	406	100% PL F.R.	CLASS 1 (I), M1 (F), B1&B2 (D), IMO	No	Orizzontale - ai lati	Oscurante	Imbottito	D	Unito
3482/31	142	406	100% PL F.R.	CLASS 1 (I), M1 (F), B1&B2 (D), IMO	No	Orizzontale - ai lati	Oscurante	Imbottito	D	Unito
3482/32	142	406	100% PL F.R.	CLASS 1 (I), M1 (F), B1&B2 (D), IMO	No	Orizzontale - ai lati	Oscurante	Imbottito	D	Unito
3482/33	142	406	100% PL F.R.	CLASS 1 (I), M1 (F), B1&B2 (D), IMO	No	Orizzontale - ai lati	Oscurante	Imbottito	D	Unito
3482/34	142	406	100% PL F.R.	CLASS 1 (I), M1 (F), B1&B2 (D), IMO	No	Orizzontale - ai lati	Oscurante	Imbottito	D	Unito
3482/35	142	406	100% PL F.R.	CLASS 1 (I), M1 (F), B1&B2 (D), IMO	No	Orizzontale - ai lati	Oscurante	Imbottito	D	Unito
3482/36	142	406	100% PL F.R.	CLASS 1 (I), M1 (F), B1&B2 (D), IMO	No	Orizzontale - ai lati	Oscurante	Imbottito	D	Unito

Tutti i coefficienti potrebbero avere una tolleranza di +/- 5%  
 Attenzione: La tonalità dei colori può variare leggermente da lotto a lotto



TESSUTI &amp; SARTORIA



Larghezza



Peso



Ignifugo



Composizione



Trasparenza



Imbottito



Piombato



Cimosa

**MANUTENZIONE**

IN ACQUA A 30° MAX, NO  
 CANDEGGIO, NO TAMBURO,  
 FERRO A 1, SÌ A SECCO,  
 STENDERE APPESO