

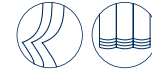


TESSUTI & SARTORIA

ATELIER 1963 - PANDORA F.R.

PANDORA F.R.

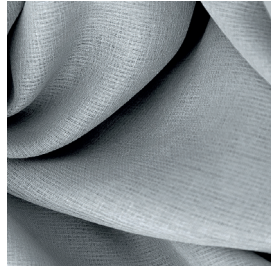
MOTTURA



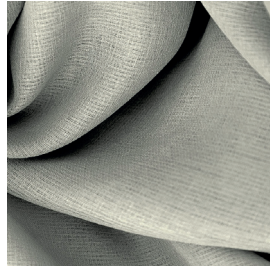
7111/01



7111/02



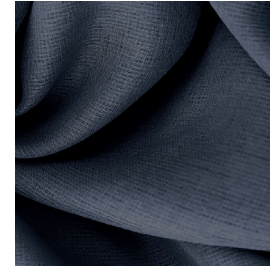
7111/03










7111/04



7111/05



Ref.	 cm	 g/m ²						Price category	Appearance
7111/01	325	43	100% PL FR	Class 1(I), M1 (F), B1&B2(D) BS 5867 (UK), EN 13773 (EU), IMO	Yes	Vertical ceiling/floor	Sheer	C	plain
7111/02	325	43	100% PL FR	Class 1(I), M1 (F), B1&B2(D) BS 5867 (UK), EN 13773 (EU), IMO	Yes	Vertical ceiling/floor	Sheer	C	plain
7111/03	325	43	100% PL FR	Class 1(I), M1 (F), B1&B2(D) BS 5867 (UK), EN 13773 (EU), IMO	Yes	Vertical ceiling/floor	Sheer	C	plain
7111/04	325	43	100% PL FR	Class 1(I), M1 (F), B1&B2(D) BS 5867 (UK), EN 13773 (EU), IMO	Yes	Vertical ceiling/floor	Sheer	C	plain
7111/05	325	43	100% PL FR	Class 1(I), M1 (F), B1&B2(D) BS 5867 (UK), EN 13773 (EU), IMO	Yes	Vertical ceiling/floor	Sheer	C	plain

All coefficients have a possible tolerance of +/- 5%
 Attention: colour shades may vary slightly from one dye-lot to another



TESSUTI & SARTORIA



Width



Weight



Flame retardant



Composition



Transparency



Upholstery



Leaded



Serged

MAINTENANCE

WASH IN MAX 30°, DO NOT BLEACH, DO NOT TUMBLE DRY, IRON ON LOW SETTING, CAN BE DRY CLEANED, DRIP DRY, SHRINKAGE AFTER FIRST WASH 0-2% FOR FURTHER INDICATIONS PLEASE CONSULT THE INDIVIDUAL PRODUCT SPECIFICATIONS IN THE ATELIER CATALOGUE.