



TESSUTI & SARTORIA

ATELIER 1963 - PALACE F.R.

PALACE F.R.

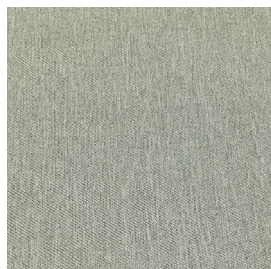
MOTTURA



6759/01



6759/02



6759/03



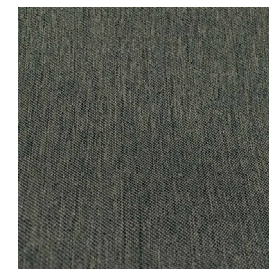
6759/04



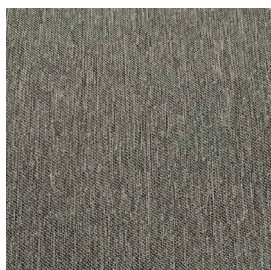
6759/05



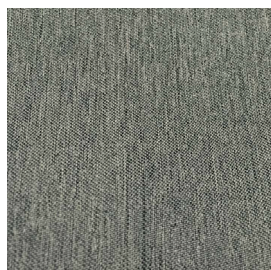
6759/06



6759/07



6759/08



6759/09



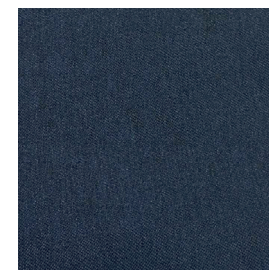
6759/10



6759/11



6759/12



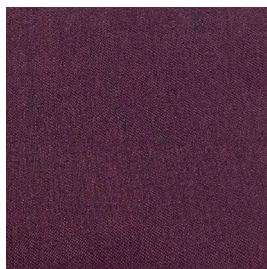
6759/13



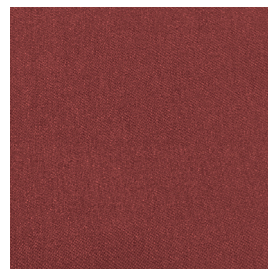
6759/14



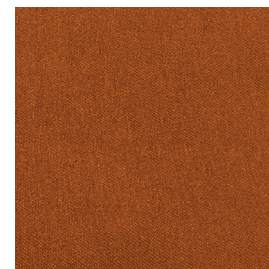
6759/15



6759/16



6759/17



6759/18





TESSUTI & SARTORIA

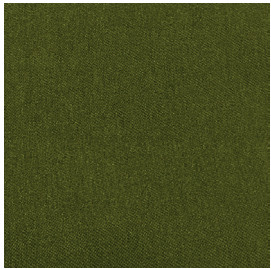
ATELIER 1963 - **PALACE F.R.**

PALACE F.R.

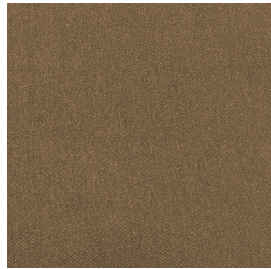
MOTTURA



6759/19



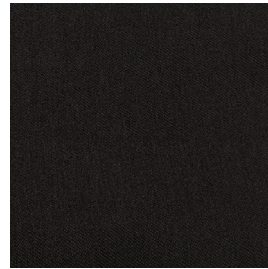
6759/20










6759/21










6759/22



Ref.	 cm	 g/m ²						Categoria Prezzo	Aspetto
6759/01	300	330	100% PL F.R.	Class 1(I), M1 (F), B1&B2(D) BS 5867 (UK),EN 13773 (EU), IMO	No	Verticale - soffitto/pavimento	Oscurante	D	Unito
6759/02	300	330	100% PL F.R.	Class 1(I), M1 (F), B1&B2(D) BS 5867 (UK),EN 13773 (EU), IMO	No	Verticale - soffitto/pavimento	Oscurante	D	Unito
6759/03	300	330	100% PL F.R.	Class 1(I), M1 (F), B1&B2(D) BS 5867 (UK),EN 13773 (EU), IMO	No	Verticale - soffitto/pavimento	Oscurante	D	Unito
6759/04	300	330	100% PL F.R.	Class 1(I), M1 (F), B1&B2(D) BS 5867 (UK),EN 13773 (EU), IMO	No	Verticale - soffitto/pavimento	Oscurante	D	Unito
6759/05	300	330	100% PL F.R.	Class 1(I), M1 (F), B1&B2(D) BS 5867 (UK),EN 13773 (EU), IMO	No	Verticale - soffitto/pavimento	Oscurante	D	Unito
6759/06	300	330	100% PL F.R.	Class 1(I), M1 (F), B1&B2(D) BS 5867 (UK),EN 13773 (EU), IMO	No	Verticale - soffitto/pavimento	Oscurante	D	Unito
6759/07	300	330	100% PL F.R.	Class 1(I), M1 (F), B1&B2(D) BS 5867 (UK),EN 13773 (EU), IMO	No	Verticale - soffitto/pavimento	Oscurante	D	Unito
6759/08	300	330	100% PL F.R.	Class 1(I), M1 (F), B1&B2(D) BS 5867 (UK),EN 13773 (EU), IMO	No	Verticale - soffitto/pavimento	Oscurante	D	Unito
6759/09	300	330	100% PL F.R.	Class 1(I), M1 (F), B1&B2(D) BS 5867 (UK),EN 13773 (EU), IMO	No	Verticale - soffitto/pavimento	Oscurante	D	Unito
6759/10	300	330	100% PL F.R.	Class 1(I), M1 (F), B1&B2(D) BS 5867 (UK),EN 13773 (EU), IMO	No	Verticale - soffitto/pavimento	Oscurante	D	Unito
6759/11	300	330	100% PL F.R.	Class 1(I), M1 (F), B1&B2(D) BS 5867 (UK),EN 13773 (EU), IMO	No	Verticale - soffitto/pavimento	Oscurante	D	Unito
6759/12	300	330	100% PL F.R.	Class 1(I), M1 (F), B1&B2(D) BS 5867 (UK),EN 13773 (EU), IMO	No	Verticale - soffitto/pavimento	Oscurante	D	Unito
6759/13	300	330	100% PL F.R.	Class 1(I), M1 (F), B1&B2(D) BS 5867 (UK),EN 13773 (EU), IMO	No	Verticale - soffitto/pavimento	Oscurante	D	Unito
6759/14	300	330	100% PL F.R.	Class 1(I), M1 (F), B1&B2(D) BS 5867 (UK),EN 13773 (EU), IMO	No	Verticale - soffitto/pavimento	Oscurante	D	Unito

Tutti i coefficienti potrebbero avere una tolleranza di +/- 5%
 Attenzione: La tonalità dei colori può variare leggermente da lotto a lotto

Ref.	 cm	 g/m ²						Categoria Prezzo	Aspetto
6759/15	300	330	100% PL F.R.	Class 1(I), M1 (F), B1&B2(D) BS 5867 (UK), EN 13773 (EU), IMO	No	Verticale - soffitto/pavimento	Oscurante	D	Unito
6759/16	300	330	100% PL F.R.	Class 1(I), M1 (F), B1&B2(D) BS 5867 (UK), EN 13773 (EU), IMO	No	Verticale - soffitto/pavimento	Oscurante	D	Unito
6759/17	300	330	100% PL F.R.	Class 1(I), M1 (F), B1&B2(D) BS 5867 (UK), EN 13773 (EU), IMO	No	Verticale - soffitto/pavimento	Oscurante	D	Unito
6759/18	300	330	100% PL F.R.	Class 1(I), M1 (F), B1&B2(D) BS 5867 (UK), EN 13773 (EU), IMO	No	Verticale - soffitto/pavimento	Oscurante	D	Unito
6759/19	300	330	100% PL F.R.	Class 1(I), M1 (F), B1&B2(D) BS 5867 (UK), EN 13773 (EU), IMO	No	Verticale - soffitto/pavimento	Oscurante	D	Unito
6759/20	300	330	100% PL F.R.	Class 1(I), M1 (F), B1&B2(D) BS 5867 (UK), EN 13773 (EU), IMO	No	Verticale - soffitto/pavimento	Oscurante	D	Unito
6759/21	300	330	100% PL F.R.	Class 1(I), M1 (F), B1&B2(D) BS 5867 (UK), EN 13773 (EU), IMO	No	Verticale - soffitto/pavimento	Oscurante	D	Unito
6759/22	300	330	100% PL F.R.	Class 1(I), M1 (F), B1&B2(D) BS 5867 (UK), EN 13773 (EU), IMO	No	Verticale - soffitto/pavimento	Oscurante	D	Unito

Tutti i coefficienti potrebbero avere una tolleranza di +/- 5%
 Attenzione: La tonalità dei colori può variare leggermente da lotto a lotto



TESSUTI & SARTORIA



Larghezza



Peso



Ignifugo



Composizione



Trasparenza



Imbottito



Piombato



Cimosa

MANUTENZIONE

IN ACQUA A 30° MAX, NO CANDEGGIO, NO TAMBURO, FERRO A 1, SÌ A SECCO, STENDERE APPESO