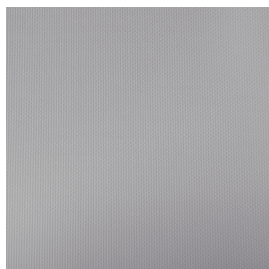


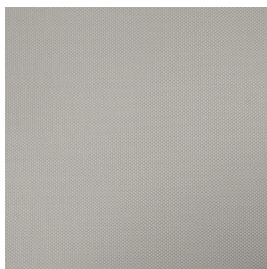
Screen P4 BLO outdoor F.R.



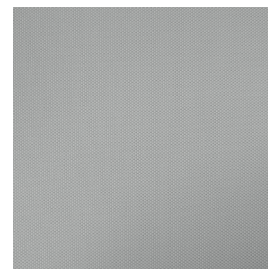
P/4B01-300



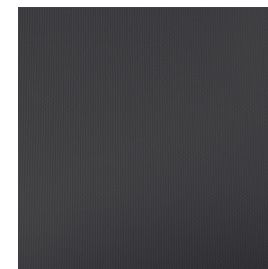
P/4B02-300



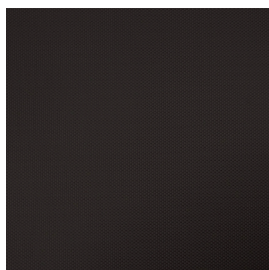
P/4B03-300



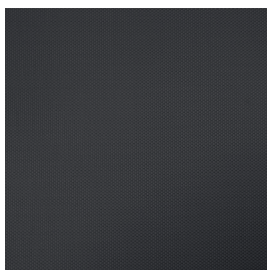
P/4B04-300



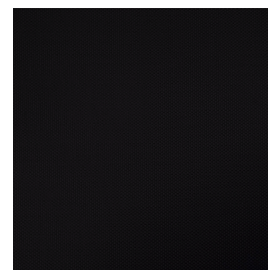
P/4B05-300



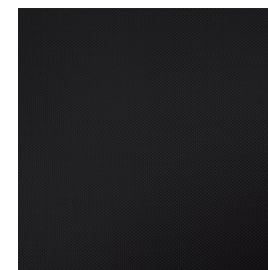
P/4B06-300



P/4B07-300



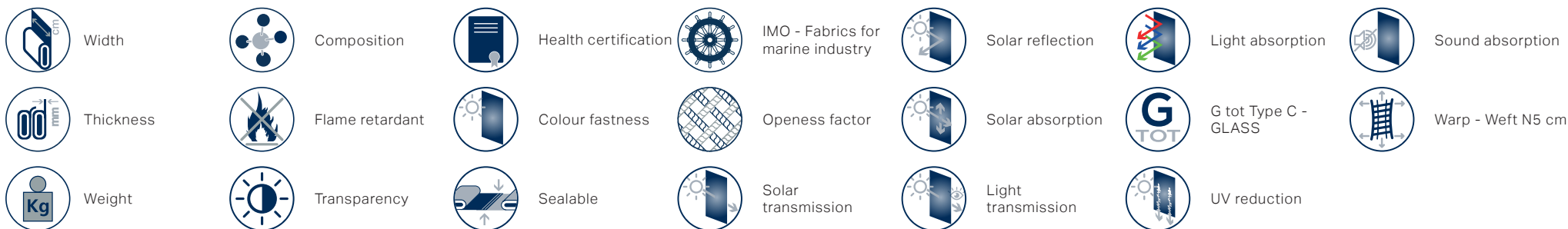
P/4B08-300





P/4B01-300	300	0,68	560	21%PL 79% PVC	Classe 1 (I), B1 (D), NFPA 701 (US), BS (GB)	Blackout	FUNGISTATIC, GREENGUARD GOLD, OEKO-TEX, REACH	8	heat	No	0	63	37	72	0,36	0,03	100	215	175
P/4B02-300	300	0,68	560	21%PL 79% PVC	Classe 1 (I), B1 (D), NFPA 701 (US), BS (GB)	Blackout	FUNGISTATIC, GREENGUARD GOLD, OEKO-TEX, REACH	8	heat	No	0	58	42	66	0,38	0,04	100	215	175
P/4B03-300	300	0,68	560	21%PL 79% PVC	Classe 1 (I), B1 (D), NFPA 701 (US), BS (GB)	Blackout	FUNGISTATIC, GREENGUARD GOLD, OEKO-TEX, REACH	8	heat	No	0	57	43	65	0,38	0,04	100	215	175
P/4B04-300	300	0,68	560	21%PL 79% PVC	Classe 1 (I), B1 (D), NFPA 701 (US), BS (GB)	Blackout	FUNGISTATIC, GREENGUARD GOLD, OEKO-TEX, REACH	8	heat	No	0	12	88	14	0,53	0,08	100	215	175
P/4B05-300	300	0,68	560	21%PL 79% PVC	Classe 1 (I), B1 (D), NFPA 701 (US), BS (GB)	Blackout	FUNGISTATIC, GREENGUARD GOLD, OEKO-TEX, REACH	8	heat	No	0	6	94	6	0,55	0,08	100	215	175
P/4B06-300	300	0,68	560	21%PL 79% PVC	Classe 1 (I), B1 (D), NFPA 701 (US), BS (GB)	Blackout	FUNGISTATIC, GREENGUARD GOLD, OEKO-TEX, REACH	8	heat	No	0	10	90	12	0,53	0,08	100	215	175
P/4B07-300	300	0,68	560	21%PL 79% PVC	Classe 1 (I), B1 (D), NFPA 701 (US), BS (GB)	Blackout	FUNGISTATIC, GREENGUARD GOLD, OEKO-TEX, REACH	8	heat	No	0	4	96	4	0,56	0,09	100	215	175
P/4B08-300	300	0,68	560	21%PL 79% PVC	Classe 1 (I), B1 (D), NFPA 701 (US), BS (GB)	Blackout	FUNGISTATIC, GREENGUARD GOLD, OEKO-TEX, REACH	8	heat	No	0	6	94	6	0,55	0,08	100	215	175

All coefficients have a possible tolerance of +/- 5%
Attention: colour shades may vary slightly from one dye lot to another



MAINTENANCE HANDLE THE FABRIC WITH CARE, USING CLEAN DRY HANDS. DO NOT USE SOLVENTS OR ANY ABRASIVE SUBSTANCES THAT MAY DAMAGE THE FABRIC. WHEN CLEANING WINDOWS THE BLIND MUST BE RAISED TO AVOID ANY DIRECT OR INDIRECT SPRAY OF CLEANING PRODUCTS. REMOVE THE DUST WITH A VACUUM CLEANER OR USING COMPRESSED AIR, AVOID PULLING OR STRETCHING FABRIC. ONLY FOR PVC COATED PRODUCTS, CLEAN WITH A DAMP CLOTH OR A SPONGE DIPPED IN SOAPY WATER IF NECESSARY. RINSE WITH CLEAN WATER. DO NOT RUB. LEAVE THE BLIND DOWN UNTIL COMPLETELY DRY.