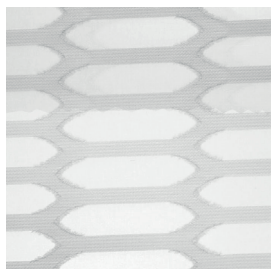


# Otto



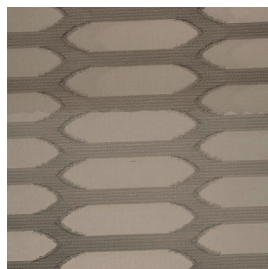
**OT/001**



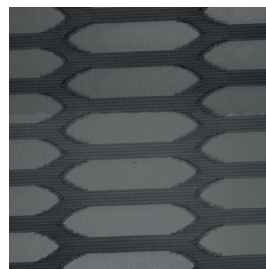
**OT/002**



**OT/003**



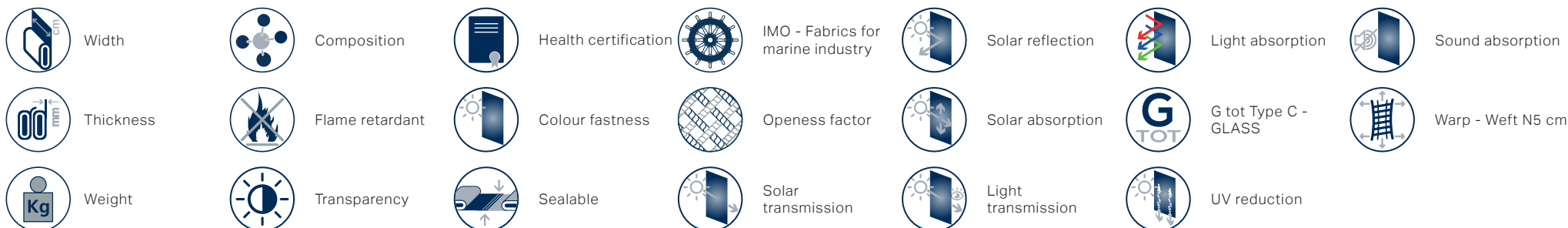
**OT/004**





Ref.	cm	mm	g/m <sup>2</sup>	Composition	Health certification	IMO - Fabrics for marine industry	Solar reflection	Light absorption	Sound absorption	Thickness	Flame retardant	Colour fastness	Openess factor	Solar absorption	G tot Type C - GLASS	Warp - Weft N5 cm	Weight	Transparency	Sealable	Solar transmission	Light transmission	UV reduction		
OT/001	260	0,46	80	100% PL	Low Transparent	OEKO-TEX	3/6	No	No	47	50	3	46	50	0,42	54								
OT/002	260	0,46	80	100% PL	Low Transparent	OEKO-TEX	3/6	No	No	47	46	7	46	46	0,43	67								
OT/003	260	0,46	80	100% PL	Low Transparent	OEKO-TEX	3/6	No	No	34	32	34	19	19	0,47	82								
OT/004	260	0,46	80	100% PL	Low Transparent	OEKO-TEX	3/6	No	No	35	27	38	15	10	0,46	80								

All coefficients have a possible tolerance of +/- 5%  
 Attention: colour shades may vary slightly from one dye lot to another



**MAINTENANCE** HANDLE THE FABRIC WITH CARE, USING CLEAN DRY HANDS. DO NOT USE SOLVENTS OR ANY ABRASIVE SUBSTANCES THAT MAY DAMAGE THE FABRIC. WHEN CLEANING WINDOWS THE BLIND MUST BE RAISED TO AVOID ANY DIRECT OR INDIRECT SPRAY OF CLEANING PRODUCTS. REMOVE THE DUST WITH A VACUUM CLEANER OR USING COMPRESSED AIR, AVOID PULLING OR STRETCHING FABRIC. ONLY FOR PVC COATED PRODUCTS, CLEAN WITH A DAMP CLOTH OR A SPONGE DIPPED IN SOAPY WATER IF NECESSARY. RINSE WITH CLEAN WATER. DO NOT RUB. LEAVE THE BLIND DOWN UNTIL COMPLETELY DRY.