



TESSUTI & SARTORIA

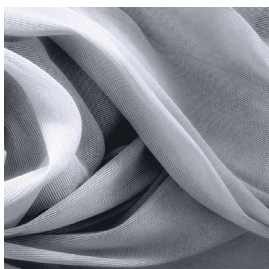
ATELIER 1963 - OLIMPO F.R.

MOTTURA

OLIMPO F.R.



7109/01



7109/02



7109/03



7109/04



7109/05



7109/06



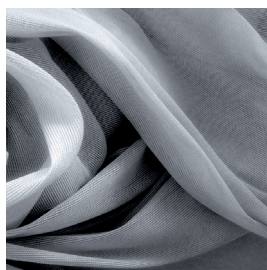
7109/07



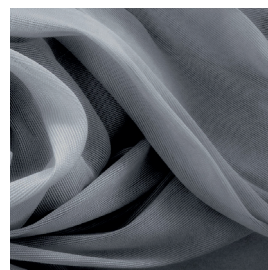
7109/08



7109/09










7109/10



7109/11



| Ref. |  cm |  g/m ² |  |  |  |  |  | Categoria Prezzo | Aspetto |
|---------|--|--|---|--|---|---|---|------------------|---------|
| 7109/01 | 305 | 191 | 100% PL FR | Class 1(I), M1 (F), B1&B2(D) BS 5867 (UK),EN 13773 (EU), IMO | Si | Verticale - soffitto/ pavimento | Filtrante | C | Unito |
| 7109/02 | 305 | 191 | 100% PL FR | Class 1(I), M1 (F), B1&B2(D) BS 5867 (UK),EN 13773 (EU), IMO | Si | Verticale - soffitto/ pavimento | Filtrante | C | Unito |
| 7109/03 | 305 | 191 | 100% PL FR | Class 1(I), M1 (F), B1&B2(D) BS 5867 (UK),EN 13773 (EU), IMO | Si | Verticale - soffitto/ pavimento | Filtrante | C | Unito |
| 7109/04 | 305 | 191 | 100% PL FR | Class 1(I), M1 (F), B1&B2(D) BS 5867 (UK),EN 13773 (EU), IMO | Si | Verticale - soffitto/ pavimento | Filtrante | C | Unito |
| 7109/05 | 305 | 191 | 100% PL FR | Class 1(I), M1 (F), B1&B2(D) BS 5867 (UK),EN 13773 (EU), IMO | Si | Verticale - soffitto/ pavimento | Filtrante | C | Unito |
| 7109/06 | 305 | 191 | 100% PL FR | Class 1(I), M1 (F), B1&B2(D) BS 5867 (UK),EN 13773 (EU), IMO | Si | Verticale - soffitto/ pavimento | Filtrante | C | Unito |
| 7109/07 | 305 | 191 | 100% PL FR | Class 1(I), M1 (F), B1&B2(D) BS 5867 (UK),EN 13773 (EU), IMO | Si | Verticale - soffitto/ pavimento | Filtrante | C | Unito |
| 7109/08 | 305 | 191 | 100% PL FR | Class 1(I), M1 (F), B1&B2(D) BS 5867 (UK),EN 13773 (EU), IMO | Si | Verticale - soffitto/ pavimento | Filtrante | C | Unito |
| 7109/09 | 305 | 191 | 100% PL FR | Class 1(I), M1 (F), B1&B2(D) BS 5867 (UK),EN 13773 (EU), IMO | Si | Verticale - soffitto/ pavimento | Filtrante | C | Unito |
| 7109/10 | 305 | 191 | 100% PL FR | Class 1(I), M1 (F), B1&B2(D) BS 5867 (UK),EN 13773 (EU), IMO | Si | Verticale - soffitto/ pavimento | Filtrante | C | Unito |
| 7109/11 | 305 | 191 | 100% PL FR | Class 1(I), M1 (F), B1&B2(D) BS 5867 (UK),EN 13773 (EU), IMO | Si | Verticale - soffitto/ pavimento | Filtrante | C | Unito |

Tutti i coefficienti potrebbero avere una tolleranza di +/- 5%
Attenzione: La tonalità dei colori può variare leggermente da lotto a lotto



TESSUTI & SARTORIA



Larghezza



Peso



Ignifugo



Composizione



Trasparenza



Imbottito



Piombato



Cimosa

MANUTENZIONE

IN ACQUA A 30° MAX, NO CANDEGGIO, NO TAMBURO, FERRO A 1, SÌ A SECCO, STENDERE APPESO