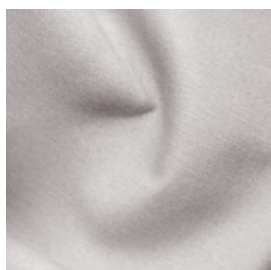


*Notturmo F.R.*



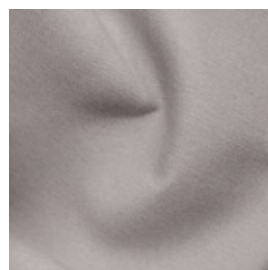
**7135/01**



**7135/02**



**7135/03**



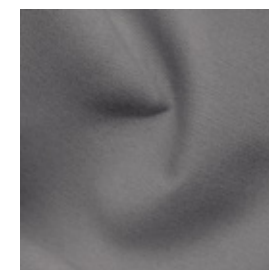
**7135/04**



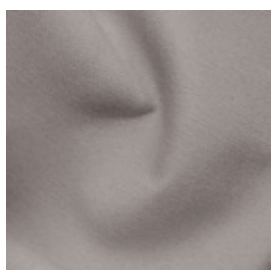
**7135/05**



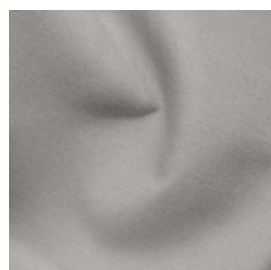
**7135/06**



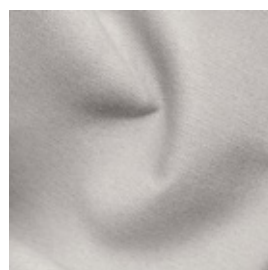
**7135/07**



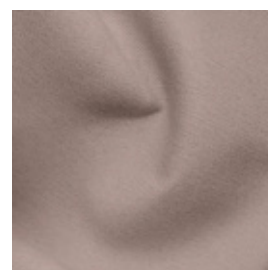
**7135/08**



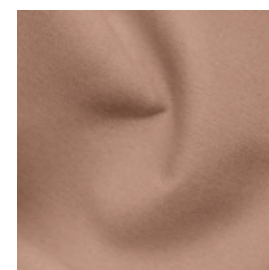
**7135/09**



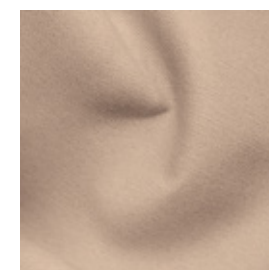
**7135/10**



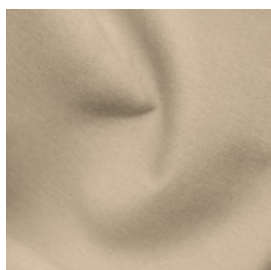
**7135/11**



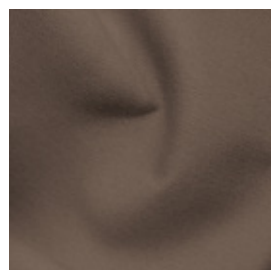
**7135/12**



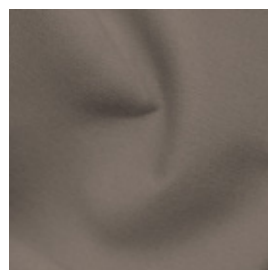
**7135/13**



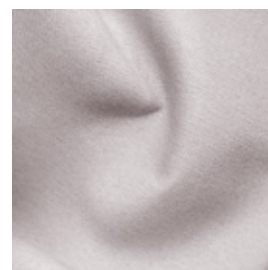
**7135/14**



**7135/15**



**7135/16**



**7135/17**



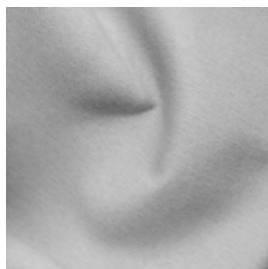
**7135/18**



# *Notturmo F.R.*



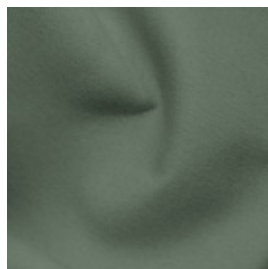
**7135/19**



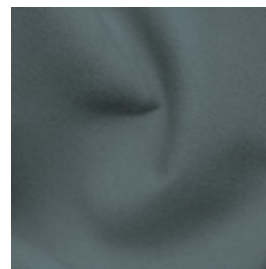
**7135/20**



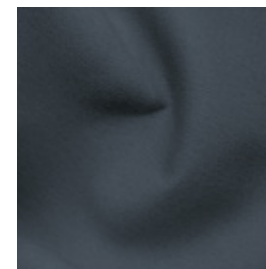
**7135/21**









**7135/22**



**7135/23**



Ref.	 cm	 Kg g/m <sup>2</sup>					Categoria Prezzo	Aspetto
7135/01	295	442	100% PL FR	No	Verticale - soffitto/pavimento	Blackout	D	Unito
7135/02	295	442	100% PL FR	No	Verticale - soffitto/pavimento	Blackout	D	Unito
7135/03	295	442	100% PL FR	No	Verticale - soffitto/pavimento	Blackout	D	Unito
7135/04	295	442	100% PL FR	No	Verticale - soffitto/pavimento	Blackout	D	Unito
7135/05	295	442	100% PL FR	No	Verticale - soffitto/pavimento	Blackout	D	Unito
7135/06	295	442	100% PL FR	No	Verticale - soffitto/pavimento	Blackout	D	Unito
7135/07	295	442	100% PL FR	No	Verticale - soffitto/pavimento	Blackout	D	Unito
7135/08	295	442	100% PL FR	No	Verticale - soffitto/pavimento	Blackout	D	Unito
7135/09	295	442	100% PL FR	No	Verticale - soffitto/pavimento	Blackout	D	Unito

Tutti i coefficienti potrebbero avere una tolleranza di +/- 5%  
 Attenzione: La tonalità dei colori può variare leggermente da lotto a lotto

ATELIER  
1963  
TESSUTI & SARTORIA



Larghezza



Ignifugo



Trasparenza



Piombato



Peso



Composizione









Imbottito



Cimosa

**MANUTENZIONE**

LAVARE IN ACQUA A 30°MAX, NO CANDEGGIO, NO TAMBURO, FERRO A 1, NO A SECCO, STENDERE APPESO. RITIRO AL PRIMO LAVAGGIO 0-2%.PER DATI SPECIFICI CONSULTARE LA SCHEDA PRODOTTO INDIVIDUALE IN ATELIER.

Ref.	 cm	 g/m <sup>2</sup>					Categoria Prezzo	Aspetto
7135/10	295	442	100% PL FR	No	Verticale - soffitto/pavimento	Blackout	D	Unito
7135/11	295	442	100% PL FR	No	Verticale - soffitto/pavimento	Blackout	D	Unito
7135/12	295	442	100% PL FR	No	Verticale - soffitto/pavimento	Blackout	D	Unito
7135/13	295	442	100% PL FR	No	Verticale - soffitto/pavimento	Blackout	D	Unito
7135/14	295	442	100% PL FR	No	Verticale - soffitto/pavimento	Blackout	D	Unito
7135/15	295	442	100% PL FR	No	Verticale - soffitto/pavimento	Blackout	D	Unito
7135/16	295	442	100% PL FR	No	Verticale - soffitto/pavimento	Blackout	D	Unito
7135/17	295	442	100% PL FR	No	Verticale - soffitto/pavimento	Blackout	D	Unito
7135/18	295	442	100% PL FR	No	Verticale - soffitto/pavimento	Blackout	D	Unito

Tutti i coefficienti potrebbero avere una tolleranza di +/- 5%  
 Attenzione: La tonalità dei colori può variare leggermente da lotto a lotto

ATELIER  
1963  
TESSUTI & SARTORIA



Larghezza



Ignifugo



Trasparenza



Piombato



Peso



Composizione









Imbottito



Cimosa

#### MANUTENZIONE

LAVARE IN ACQUA A 30°MAX, NO CANDEGGIO, NO TAMBURO, FERRO A 1, NO A SECCO, STENDERE APPESO. RITIRO AL PRIMO LAVAGGIO 0-2%.PER DATI SPECIFICI CONSULTARE LA SCHEDA PRODOTTO INDIVIDUALE IN ATELIER.

Ref.	 cm	 Kg g/m <sup>2</sup>					Categoria Prezzo	Aspetto
7135/19	295	442	100% PL FR	No	Verticale - soffitto/pavimento	Blackout	D	Unito
7135/20	295	442	100% PL FR	No	Verticale - soffitto/pavimento	Blackout	D	Unito
7135/21	295	442	100% PL FR	No	Verticale - soffitto/pavimento	Blackout	D	Unito
7135/22	295	442	100% PL FR	No	Verticale - soffitto/pavimento	Blackout	D	Unito
7135/23	295	442	100% PL FR	No	Verticale - soffitto/pavimento	Blackout	D	Unito

Tutti i coefficienti potrebbero avere una tolleranza di +/- 5%  
 Attenzione: La tonalità dei colori può variare leggermente da lotto a lotto

**ATELIER  
1963**  
TESSUTI & SARTORIA



Larghezza



Ignifugo



Trasparenza



Piombato



Peso



Composizione



Imbottito



Cimosa

**MANUTENZIONE**

LAVARE IN ACQUA A 30°MAX, NO CANDEGGIO, NO TAMBURO, FERRO A 1, NO A SECCO, STENDERE APPESO. RITIRO AL PRIMO LAVAGGIO 0-2%.PER DATI SPECIFICI CONSULTARE LA SCHEDA PRODOTTO INDIVIDUALE IN ATELIER.