

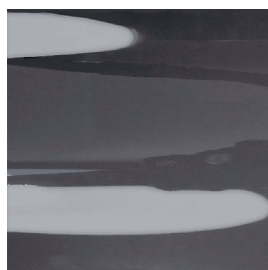
MOVIE OMBREG. LISCIO R3



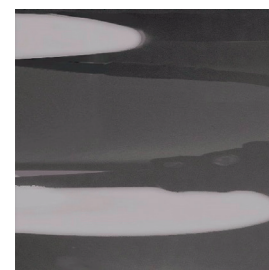
R3/330



R3/338



R3/339



Ref.	cm	mm	g/m ²											
R3/330	182	0,08	106	100% PET	Transparent	No	with tape using high frequency	No	36	19	45	43	22	100
R3/338	182	0,08	106	100% PET	Transparent	No	with tape using high frequency	No	16	22	62	7	26	100
R3/339	182	0,08	106	100% PET	Transparent	No	with tape using high frequency	No	17	23	60	10	27	100

All coefficients have a possible tolerance of +/- 5%
 Attention: colour shades may vary slightly from one dye lot to another

Width	Composition	Health certification	IMO - Fabrics for marine industry	Solar reflection	Light absorption
Thickness	Flame retardant	Colour fastness	Openess factor	Solar absorption	G tot Type C - GLASS
Weight	Transparency	Sealable	Solar transmission	Light transmission	UV reduction
					Warp - Weft N5 cm

MAINTENANCE HANDLE THE FABRIC WITH CARE, USING CLEAN DRY HANDS. DO NOT USE SOLVENTS OR ANY ABRASIVE SUBSTANCES THAT MAY DAMAGE THE FABRIC. WHEN CLEANING WINDOWS THE BLIND MUST BE RAISED TO AVOID ANY DIRECT OR INDIRECT SPRAY OF CLEANING PRODUCTS. REMOVE THE DUST WITH A VACUUM CLEANER OR USING COMPRESSED AIR, AVOID PULLING OR STRETCHING FABRIC. ONLY FOR PVC COATED PRODUCTS, CLEAN WITH A DAMP CLOTH OR A SPONGE DIPPED IN SOAPY WATER IF NECESSARY. RINSE WITH CLEAN WATER. DO NOT RUB. LEAVE THE BLIND DOWN UNTIL COMPLETELY DRY.