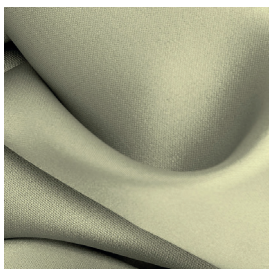


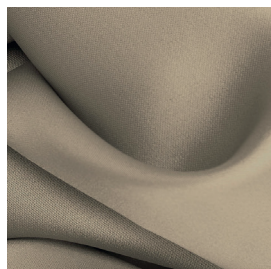
MORFEO F.R.



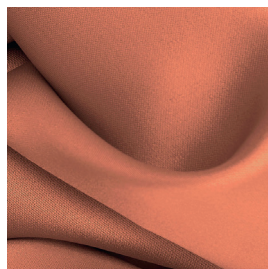
7107/01



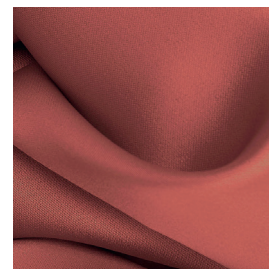
7107/03



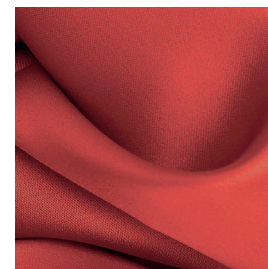
7107/07



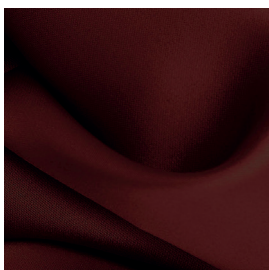
7107/08



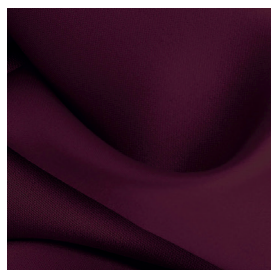
7107/09



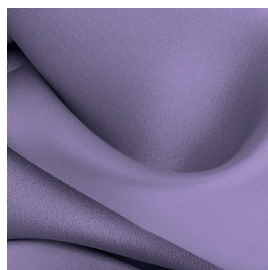
7107/10



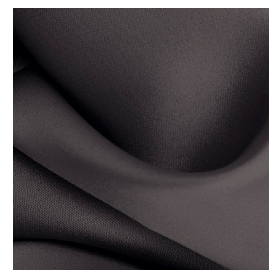
7107/11



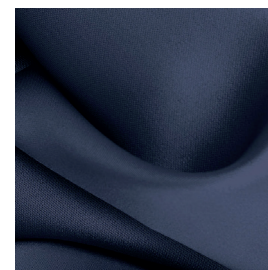
7107/12



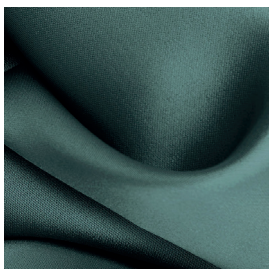
7107/15



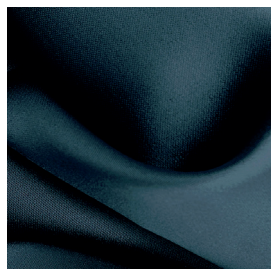
7107/23



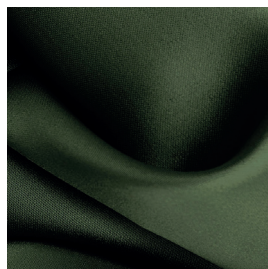
7107/27










7107/28



7107/29



Ref.	 cm	 g/m <sup>2</sup>						Categoria Prezzo	Aspetto
7107/01	300	246	100% PL F.R.	Classe1 (I)	No	Verticale - soffitto/ pavimento	Oscurante	C	Unito
7107/03	300	246	100% PL F.R.	Classe1 (I)	No	Verticale - soffitto/ pavimento	Oscurante	C	Unito
7107/07	300	246	100% PL F.R.	Classe1 (I)	No	Verticale - soffitto/ pavimento	Oscurante	C	Unito
7107/08	300	246	100% PL F.R.	Classe1 (I)	No	Verticale - soffitto/ pavimento	Oscurante	C	Unito
7107/09	300	246	100% PL F.R.	Classe1 (I)	No	Verticale - soffitto/ pavimento	Oscurante	C	Unito
7107/10	300	246	100% PL F.R.	Classe1 (I)	No	Verticale - soffitto/ pavimento	Oscurante	C	Unito
7107/11	300	246	100% PL F.R.	Classe1 (I)	No	Verticale - soffitto/ pavimento	Oscurante	C	Unito
7107/12	300	246	100% PL F.R.	Classe1 (I)	No	Verticale - soffitto/ pavimento	Oscurante	C	Unito
7107/15	300	246	100% PL F.R.	Classe1 (I)	No	Verticale - soffitto/ pavimento	Oscurante	C	Unito
7107/23	300	246	100% PL F.R.	Classe1 (I)	No	Verticale - soffitto/ pavimento	Oscurante	C	Unito
7107/27	300	246	100% PL F.R.	Classe1 (I)	No	Verticale - soffitto/ pavimento	Oscurante	C	Unito
7107/28	300	246	100% PL F.R.	Classe1 (I)	No	Verticale - soffitto/ pavimento	Oscurante	C	Unito
7107/29	300	246	100% PL F.R.	Classe1 (I)	No	Verticale - soffitto/ pavimento	Oscurante	C	Unito

Tutti i coefficienti potrebbero avere una tolleranza di +/- 5%  
Attenzione: La tonalità dei colori può variare leggermente da lotto a lotto



TESSUTI &amp; SARTORIA



Larghezza



Ignifugo



Trasparenza



Piombato



Peso



Composizione



Imbottito



Cimosa

**MANUTENZIONE**

IN ACQUA A 30° MAX, NO  
CANDEGGIO, NO TAMBURIO,  
FERRO A 1, SÌ A SECCO,  
STENDERE APPESO