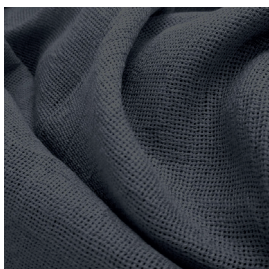


*MONET F.R.*



**7108/01**



**7108/02**



**7108/03**



**7108/04**



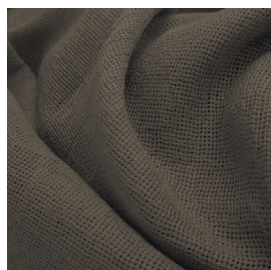
**7108/05**



**7108/06**



**7108/07**



**7108/08**










**7108/09**



**7108/10**



Ref.	 cm	 g/m <sup>2</sup>						Price category	Appearance		
7108/01	300	106	100% PL FR	Class 1(I), M1 (F), B1&B2(D) BS 5867 (UK),EN 13773 (EU), IMO	Yes			Vertical ceiling/floor	Sheer	C	plain
7108/02	300	106	100% PL FR	Class 1(I), M1 (F), B1&B2(D) BS 5867 (UK),EN 13773 (EU), IMO	Yes			Vertical ceiling/floor	Sheer	C	plain
7108/03	300	106	100% PL FR	Class 1(I), M1 (F), B1&B2(D) BS 5867 (UK),EN 13773 (EU), IMO	Yes			Vertical ceiling/floor	Sheer	C	plain
7108/04	300	106	100% PL FR	Class 1(I), M1 (F), B1&B2(D) BS 5867 (UK),EN 13773 (EU), IMO	Yes			Vertical ceiling/floor	Sheer	C	plain
7108/05	300	106	100% PL FR	Class 1(I), M1 (F), B1&B2(D) BS 5867 (UK),EN 13773 (EU), IMO	Yes			Vertical ceiling/floor	Sheer	C	plain
7108/06	300	106	100% PL FR	Class 1(I), M1 (F), B1&B2(D) BS 5867 (UK),EN 13773 (EU), IMO	Yes			Vertical ceiling/floor	Sheer	C	plain
7108/07	300	106	100% PL FR	Class 1(I), M1 (F), B1&B2(D) BS 5867 (UK),EN 13773 (EU), IMO	Yes			Vertical ceiling/floor	Sheer	C	plain
7108/08	300	106	100% PL FR	Class 1(I), M1 (F), B1&B2(D) BS 5867 (UK),EN 13773 (EU), IMO	Yes			Vertical ceiling/floor	Sheer	C	plain
7108/09	300	106	100% PL FR	Class 1(I), M1 (F), B1&B2(D) BS 5867 (UK),EN 13773 (EU), IMO	Yes			Vertical ceiling/floor	Sheer	C	plain
7108/10	300	106	100% PL FR	Class 1(I), M1 (F), B1&B2(D) BS 5867 (UK),EN 13773 (EU), IMO	Yes			Vertical ceiling/floor	Sheer	C	plain

All coefficients have a possible tolerance of +/- 5%  
Attention: colour shades may vary slightly from one dye-lot to another



TESSUTI &amp; SARTORIA



Width



Weight



Flame retardant



Composition



Transparency



Upholstery



Leaded



Selvege

### MAINTENANCE

WASH IN MAX 30°, DO NOT BLEACH, DO NOT TUMBLE DRY, IRON ON LOW SETTING, CAN BE DRY CLEANED, DRIP DRY, SHRINKAGE AFTER FIRST WASH 0-2% FOR FURTHER INDICATIONS PLEASE CONSULT THE INDIVIDUAL PRODUCT SPECIFICATIONS IN THE ATELIER CATALOGUE.