



TESSUTI & SARTORIA

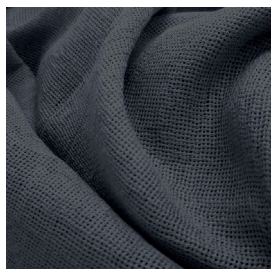
ATELIER 1963 - MONET F.R.

MONET F.R.

MOTTURA



7108/01



7108/02



7108/03



7108/04



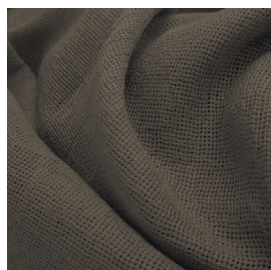
7108/05



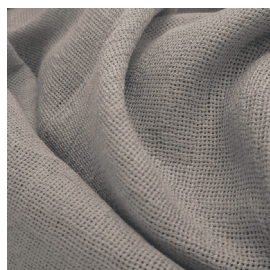
7108/06



7108/07



7108/08










7108/09



7108/10



Ref.	 cm	 g/m ²						Categoria Prezzo	Aspetto
7108/01	300	106	100% PL FR	Class 1(I), M1 (F), B1&B2(D) BS 5867 (UK),EN 13773 (EU), IMO	Si	Verticale - soffitto/ pavimento	Filtrante	C	Unito
7108/02	300	106	100% PL FR	Class 1(I), M1 (F), B1&B2(D) BS 5867 (UK),EN 13773 (EU), IMO	Si	Verticale - soffitto/ pavimento	Filtrante	C	Unito
7108/03	300	106	100% PL FR	Class 1(I), M1 (F), B1&B2(D) BS 5867 (UK),EN 13773 (EU), IMO	Si	Verticale - soffitto/ pavimento	Filtrante	C	Unito
7108/04	300	106	100% PL FR	Class 1(I), M1 (F), B1&B2(D) BS 5867 (UK),EN 13773 (EU), IMO	Si	Verticale - soffitto/ pavimento	Filtrante	C	Unito
7108/05	300	106	100% PL FR	Class 1(I), M1 (F), B1&B2(D) BS 5867 (UK),EN 13773 (EU), IMO	Si	Verticale - soffitto/ pavimento	Filtrante	C	Unito
7108/06	300	106	100% PL FR	Class 1(I), M1 (F), B1&B2(D) BS 5867 (UK),EN 13773 (EU), IMO	Si	Verticale - soffitto/ pavimento	Filtrante	C	Unito
7108/07	300	106	100% PL FR	Class 1(I), M1 (F), B1&B2(D) BS 5867 (UK),EN 13773 (EU), IMO	Si	Verticale - soffitto/ pavimento	Filtrante	C	Unito
7108/08	300	106	100% PL FR	Class 1(I), M1 (F), B1&B2(D) BS 5867 (UK),EN 13773 (EU), IMO	Si	Verticale - soffitto/ pavimento	Filtrante	C	Unito
7108/09	300	106	100% PL FR	Class 1(I), M1 (F), B1&B2(D) BS 5867 (UK),EN 13773 (EU), IMO	Si	Verticale - soffitto/ pavimento	Filtrante	C	Unito
7108/10	300	106	100% PL FR	Class 1(I), M1 (F), B1&B2(D) BS 5867 (UK),EN 13773 (EU), IMO	Si	Verticale - soffitto/ pavimento	Filtrante	C	Unito

Tutti i coefficienti potrebbero avere una tolleranza di +/- 5%
Attenzione: La tonalità dei colori può variare leggermente da lotto a lotto



TESSUTI & SARTORIA



Larghezza



Peso



Ignifugo



Composizione



Trasparenza



Imbottito



Piombato



Cimosa

MANUTENZIONE

IN ACQUA A 30° MAX, NO
CANDEGGIO, NO TAMBURRO,
FERRO A 1, SÌ A SECCO,
STENDERE APPESO