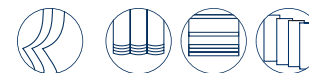
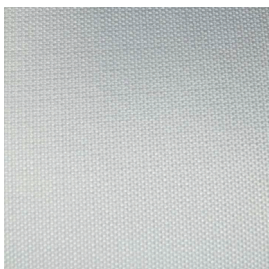


MASTER 2 F.R.



3002/340



3003/340



3004/340



3005/340



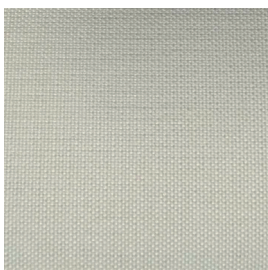
3006/340



3007/340



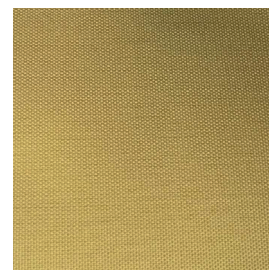
3008/340



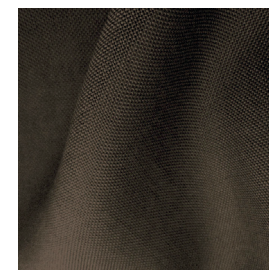
3009/340



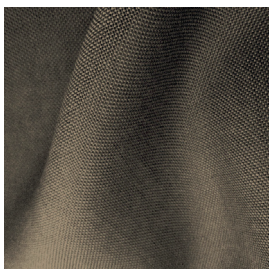
3010/340



3011/340



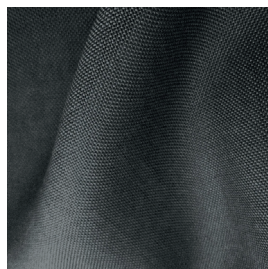
3013/340



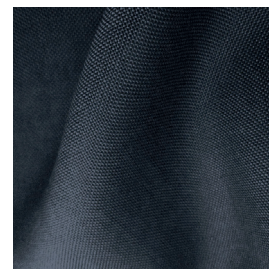
3023/340



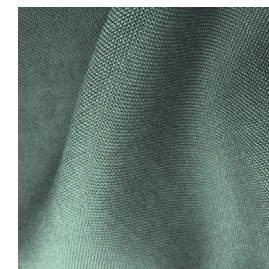
3024/340



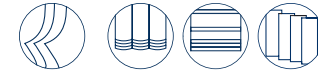
3025/340



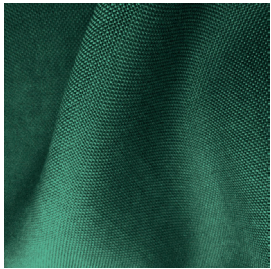
3027/340



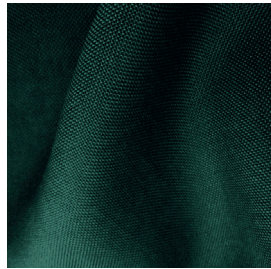
MASTER 2 F.R.



3038/340



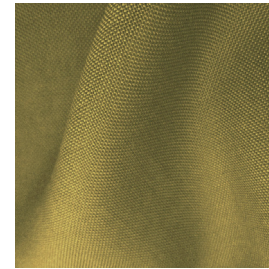
3041/340



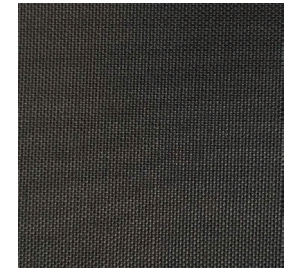
3043/340



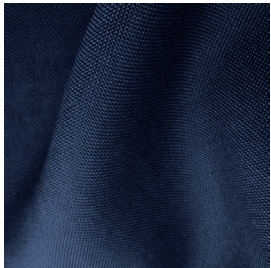
3046/340



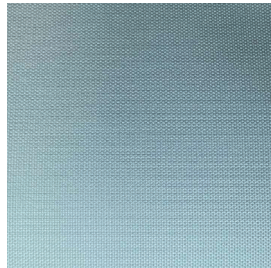
3051/340



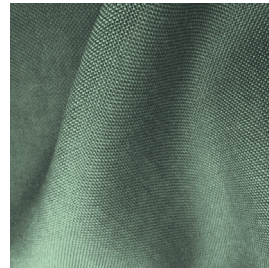
3055/340



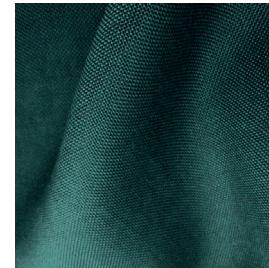
3056/340



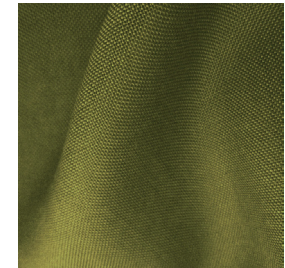
3057/340



3059/340



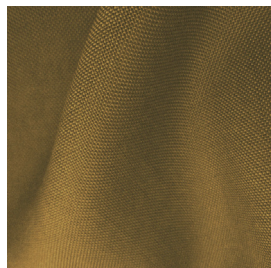
3061/340



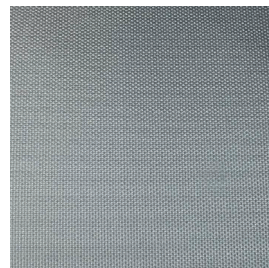
3064/340



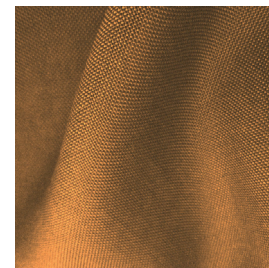
3065/340



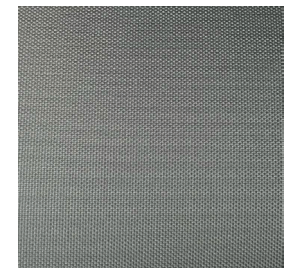
3066/340



3067/340



3068/340



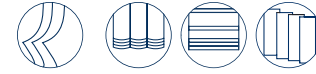


TESSUTI & SARTORIA

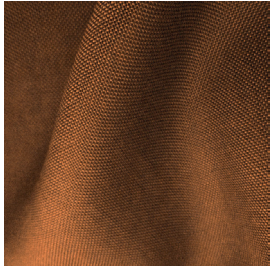
ATELIER 1963 - MASTER 2 F.R.

MASTER 2 F.R.

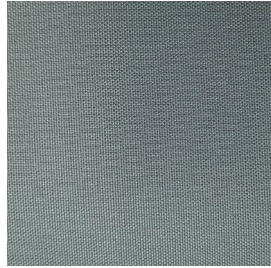
MOTTURA



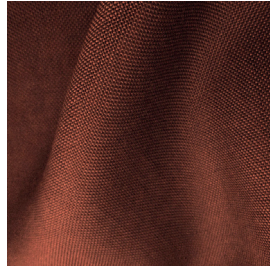
3069/340



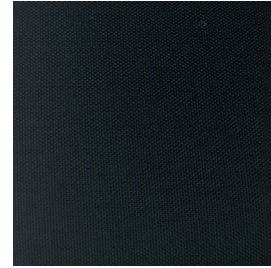
3070/340



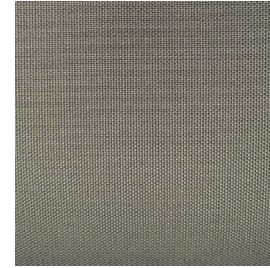
3073/340



3074/340



3082/340





Ref.	 cm	 g/m ²						Categoria Prezzo	Aspetto
3002/340	340	260	100% PL TREVIRA CS	Class 1(I), M1 (F), B1&B2(D)	No	Verticale - soffitto/pavimento	Filtrante	D	Unito
3003/340	340	260	100% PL TREVIRA CS	Class 1(I), M1 (F), B1&B2(D)	No	Verticale - soffitto/pavimento	Filtrante	D	Unito
3004/340	340	260	100% PL TREVIRA CS	Class 1(I), M1 (F), B1&B2(D)	No	Verticale - soffitto/pavimento	Filtrante	D	Unito
3005/340	340	260	100% PL TREVIRA CS	Class 1(I), M1 (F), B1&B2(D)	No	Verticale - soffitto/pavimento	Filtrante	D	Unito
3006/340	340	260	100% PL TREVIRA CS	Class 1(I), M1 (F), B1&B2(D)	No	Verticale - soffitto/pavimento	Filtrante	D	Unito
3007/340	340	260	100% PL TREVIRA CS	Class 1(I), M1 (F), B1&B2(D)	No	Verticale - soffitto/pavimento	Filtrante	D	Unito
3008/340	340	260	100% PL TREVIRA CS	Class 1(I), M1 (F), B1&B2(D)	No	Verticale - soffitto/pavimento	Filtrante	D	Unito
3009/340	340	260	100% PL TREVIRA CS	Class 1(I), M1 (F), B1&B2(D)	No	Verticale - soffitto/pavimento	Filtrante	D	Unito
3010/340	340	260	100% PL TREVIRA CS	Class 1(I), M1 (F), B1&B2(D)	No	Verticale - soffitto/pavimento	Filtrante	D	Unito
3011/340	340	260	100% PL TREVIRA CS	Class 1(I), M1 (F), B1&B2(D)	No	Verticale - soffitto/pavimento	Filtrante	D	Unito
3013/340	340	260	100% PL TREVIRA CS	Class 1(I), M1 (F), B1&B2(D)	No	Verticale - soffitto/pavimento	Filtrante	D	Unito
3023/340	340	260	100% PL TREVIRA CS	Class 1(I), M1 (F), B1&B2(D)	No	Verticale - soffitto/pavimento	Filtrante	D	Unito
3024/340	340	260	100% PL TREVIRA CS	Class 1(I), M1 (F), B1&B2(D)	No	Verticale - soffitto/pavimento	Filtrante	D	Unito
3025/340	340	260	100% PL TREVIRA CS	Class 1(I), M1 (F), B1&B2(D)	No	Verticale - soffitto/pavimento	Filtrante	D	Unito

Tutti i coefficienti potrebbero avere una tolleranza di +/- 5%
 Attenzione: La tonalità dei colori può variare leggermente da lotto a lotto

Ref.	 cm	 g/m ²						Categoria Prezzo	Aspetto
3027/340	340	260	100% PL TREVIRA CS	Class 1(I), M1 (F), B1&B2(D)	No	Verticale - soffitto/pavimento	Filtrante	D	Unito
3038/340	340	260	100% PL TREVIRA CS	Class 1(I), M1 (F), B1&B2(D)	No	Verticale - soffitto/pavimento	Filtrante	D	Unito
3041/340	340	260	100% PL TREVIRA CS	Class 1(I), M1 (F), B1&B2(D)	No	Verticale - soffitto/pavimento	Filtrante	D	Unito
3043/340	340	260	100% PL TREVIRA CS	Class 1(I), M1 (F), B1&B2(D)	No	Verticale - soffitto/pavimento	Filtrante	D	Unito
3046/340	340	260	100% PL TREVIRA CS	Class 1(I), M1 (F), B1&B2(D)	No	Verticale - soffitto/pavimento	Filtrante	D	Unito
3051/340	340	260	100% PL TREVIRA CS	Class 1(I), M1 (F), B1&B2(D)	No	Verticale - soffitto/pavimento	Filtrante	D	Unito
3055/340	340	260	100% PL TREVIRA CS	Class 1(I), M1 (F), B1&B2(D)	No	Verticale - soffitto/pavimento	Filtrante	D	Unito
3056/340	340	260	100% PL TREVIRA CS	Class 1(I), M1 (F), B1&B2(D)	No	Verticale - soffitto/pavimento	Filtrante	D	Unito
3057/340	340	260	100% PL TREVIRA CS	Class 1(I), M1 (F), B1&B2(D)	No	Verticale - soffitto/pavimento	Filtrante	D	Unito
3059/340	340	260	100% PL TREVIRA CS	Class 1(I), M1 (F), B1&B2(D)	No	Verticale - soffitto/pavimento	Filtrante	D	Unito
3061/340	340	260	100% PL TREVIRA CS	Class 1(I), M1 (F), B1&B2(D)	No	Verticale - soffitto/pavimento	Filtrante	D	Unito
3064/340	340	260	100% PL TREVIRA CS	Class 1(I), M1 (F), B1&B2(D)	No	Verticale - soffitto/pavimento	Filtrante	D	Unito
3065/340	340	260	100% PL TREVIRA CS	Class 1(I), M1 (F), B1&B2(D)	No	Verticale - soffitto/pavimento	Filtrante	D	Unito
3066/340	340	260	100% PL TREVIRA CS	Class 1(I), M1 (F), B1&B2(D)	No	Verticale - soffitto/pavimento	Filtrante	D	Unito

Tutti i coefficienti potrebbero avere una tolleranza di +/- 5%
 Attenzione: La tonalità dei colori può variare leggermente da lotto a lotto

Ref.	 cm	 g/m ²						Categoria Prezzo	Aspetto
3067/340	340	260	100% PL TREVIRA CS	Class 1(I), M1 (F), B1&B2(D)	No	Verticale - soffitto/pavimento	Filtrante	D	Unito
3068/340	340	260	100% PL TREVIRA CS	Class 1(I), M1 (F), B1&B2(D)	No	Verticale - soffitto/pavimento	Filtrante	D	Unito
3069/340	340	260	100% PL TREVIRA CS	Class 1(I), M1 (F), B1&B2(D)	No	Verticale - soffitto/pavimento	Filtrante	D	Unito
3070/340	340	260	100% PL TREVIRA CS	Class 1(I), M1 (F), B1&B2(D)	No	Verticale - soffitto/pavimento	Filtrante	D	Unito
3073/340	340	260	100% PL TREVIRA CS	Class 1(I), M1 (F), B1&B2(D)	No	Verticale - soffitto/pavimento	Filtrante	D	Unito
3074/340	340	260	100% PL TREVIRA CS	Class 1(I), M1 (F), B1&B2(D)	No	Verticale - soffitto/pavimento	Filtrante	D	Unito
3082/340	340	260	100% PL TREVIRA CS	Class 1(I), M1 (F), B1&B2(D)	No	Verticale - soffitto/pavimento	Filtrante	D	Unito

Tutti i coefficienti potrebbero avere una tolleranza di +/- 5%
 Attenzione: La tonalità dei colori può variare leggermente da lotto a lotto



TESSUTI & SARTORIA



Larghezza



Peso



Ignifugo



Composizione



Trasparenza



Imbottito



Piombato



Cimosa

MANUTENZIONE

IN ACQUA A 30° MAX,
 NO CANDEGGIO, NO
 TAMBURO, FERRO A 1,
 SÌ A SECCO, STENDERE
 APPESO RITIRO AL
 PRIMO LAVAGGIO 1-2%