

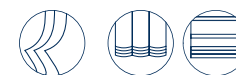


TESSUTI & SARTORIA

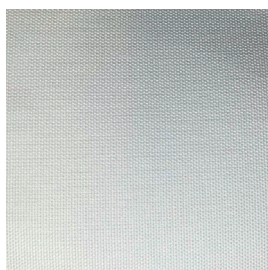
ATELIER 1963 - MASTER 202 F.R.

MOTTURA

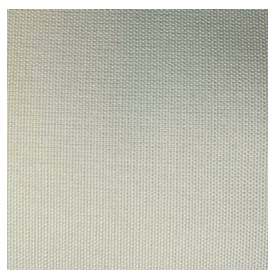
# MASTER 202 F.R.



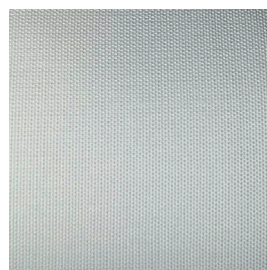
**3202/02**



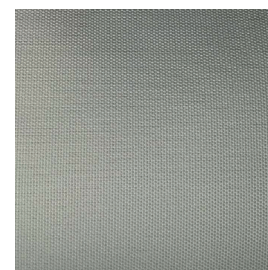
**3202/04**



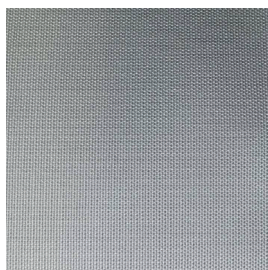
**3202/05**



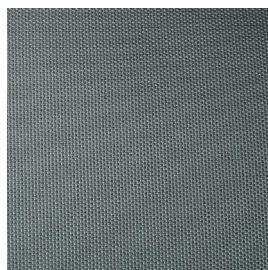
**3202/06**



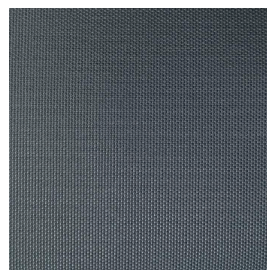
**3202/66**



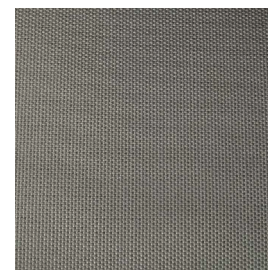
**3202/70**










**3202/72**



**3202/82**



| Ref.    |  cm |  g/m <sup>2</sup> |  |  |  |  |  | Price category | Appearance |
|---------|--|--|---|--|---|---|---|----------------|------------|
| 3202/02 | 340  | 265  | 60% PL F.R. - 40% PL  | Class 1(l)   | No  | Vertical ceiling/floor  | Sheer   | C              | plain      |
| 3202/04 | 340  | 265  | 60% PL F.R. - 40% PL  | Class 1(l)   | No  | Vertical ceiling/floor  | Sheer   | C              | plain      |
| 3202/05 | 340  | 265  | 60% PL F.R. - 40% PL  | Class 1(l)   | No  | Vertical ceiling/floor  | Sheer   | C              | plain      |
| 3202/06 | 340  | 265  | 60% PL F.R. - 40% PL  | Class 1(l)   | No  | Vertical ceiling/floor  | Sheer   | C              | plain      |
| 3202/66 | 340  | 265  | 60% PL F.R. - 40% PL  | Class 1(l)   | No  | Vertical ceiling/floor  | Sheer   | C              | plain      |
| 3202/70 | 340  | 265  | 60% PL F.R. - 40% PL  | Class 1(l)   | No  | Vertical ceiling/floor  | Sheer   | C              | plain      |
| 3202/72 | 340  | 265  | 60% PL F.R. - 40% PL  | Class 1(l)   | No  | Vertical ceiling/floor  | Sheer   | C              | plain      |
| 3202/82 | 340  | 265  | 60% PL F.R. - 40% PL  | Class 1(l)   | No  | Vertical ceiling/floor  | Sheer   | C              | plain      |

All coefficients have a possible tolerance of +/- 5%  
Attention: colours shades may vary slightly from one dye-lot to another



TESSUTI & SARTORIA



Width



Weight



Flame retardant



Composition



Transparency



Upholstery



Leaded



Selvedge

#### MAINTENANCE

WASH IN MAX 30°, DO NOT BLEACH, DO NOT TUMBLE DRY, IRON ON LOW SETTING, CAN BE DRY CLEANED, DRIP DRY, SHRINKAGE AFTER FIRST WASH 0-2% FOR FURTHER INDICATIONS PLEASE CONSULT THE INDIVIDUAL PRODUCT SPECIFICATIONS IN THE ATELIER CATALOGUE.