



TESSUTI & SARTORIA

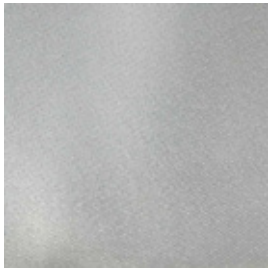
ATELIER 1963 - LUXURY F.R.

LUXURY F.R.

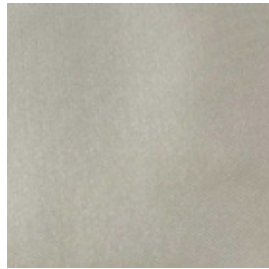
MOTTURA



6758/02



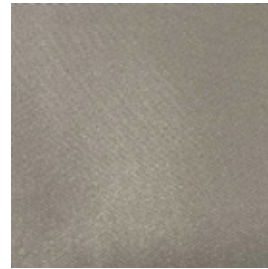
6758/03



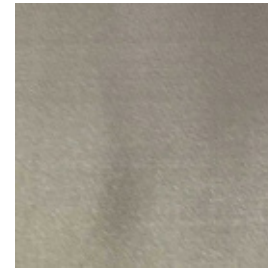
6758/04



6758/05



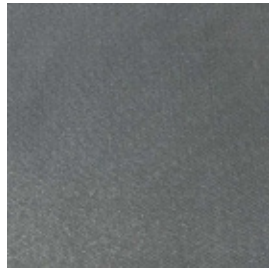
6758/08



6758/11



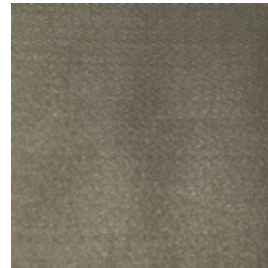
6758/12



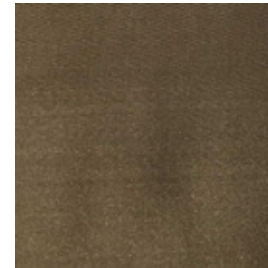
6758/14



6758/15



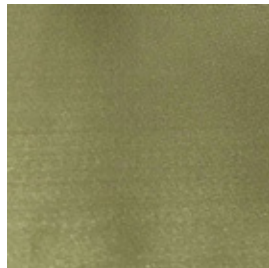
6758/16



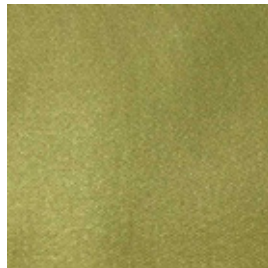
6758/18



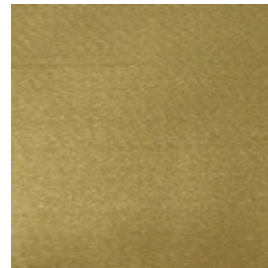
6758/19



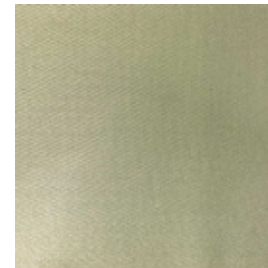
6758/20



6758/21



6758/23





TESSUTI & SARTORIA

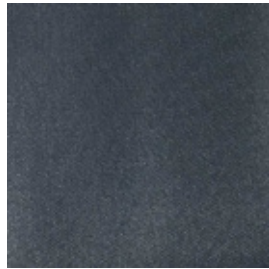
ATELIER 1963 - LUXURY F.R.

LUXURY F.R.

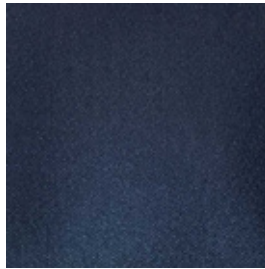
MOTTURA



6758/24



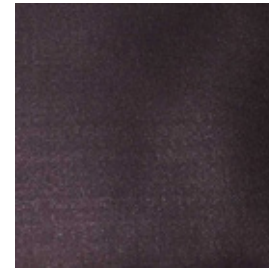
6758/25



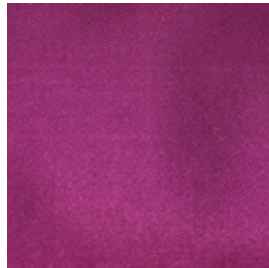
6758/26



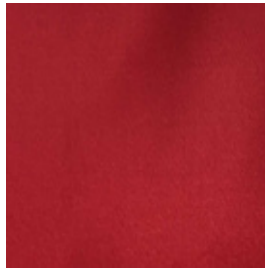
6758/29



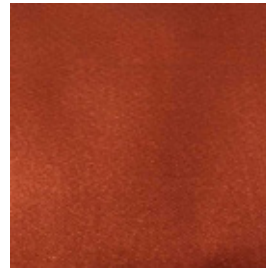
6758/30



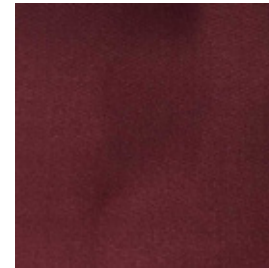
6758/31










6758/32









6758/33



Ref.	 cm	 g/m ²						Price category	Appearance
6758/02	300	200	64% PL F.R. - 36% PL TREVIRA CS	Class 1(I), M1 (F), B1&B2(D) BS 5867 (UK),EN 13773 (EU)	No	Vertical ceiling/floor	Multi purpose	C	plain
6758/03	300	200	64% PL F.R. - 36% PL TREVIRA CS	Class 1(I), M1 (F), B1&B2(D) BS 5867 (UK),EN 13773 (EU)	No	Vertical ceiling/floor	Multi purpose	C	plain
6758/04	300	200	64% PL F.R. - 36% PL TREVIRA CS	Class 1(I), M1 (F), B1&B2(D) BS 5867 (UK),EN 13773 (EU)	No	Vertical ceiling/floor	Multi purpose	C	plain
6758/05	300	200	64% PL F.R. - 36% PL TREVIRA CS	Class 1(I), M1 (F), B1&B2(D) BS 5867 (UK),EN 13773 (EU)	No	Vertical ceiling/floor	Multi purpose	C	plain
6758/08	300	200	64% PL F.R. - 36% PL TREVIRA CS	Class 1(I), M1 (F), B1&B2(D) BS 5867 (UK),EN 13773 (EU)	No	Vertical ceiling/floor	Multi purpose	C	plain
6758/11	300	200	64% PL F.R. - 36% PL TREVIRA CS	Class 1(I), M1 (F), B1&B2(D) BS 5867 (UK),EN 13773 (EU)	No	Vertical ceiling/floor	Multi purpose	C	plain
6758/12	300	200	64% PL F.R. - 36% PL TREVIRA CS	Class 1(I), M1 (F), B1&B2(D) BS 5867 (UK),EN 13773 (EU)	No	Vertical ceiling/floor	Multi purpose	C	plain
6758/14	300	200	64% PL F.R. - 36% PL TREVIRA CS	Class 1(I), M1 (F), B1&B2(D) BS 5867 (UK),EN 13773 (EU)	No	Vertical ceiling/floor	Multi purpose	C	plain
6758/15	300	200	64% PL F.R. - 36% PL TREVIRA CS	Class 1(I), M1 (F), B1&B2(D) BS 5867 (UK),EN 13773 (EU)	No	Vertical ceiling/floor	Multi purpose	C	plain
6758/16	300	200	64% PL F.R. - 36% PL TREVIRA CS	Class 1(I), M1 (F), B1&B2(D) BS 5867 (UK),EN 13773 (EU)	No	Vertical ceiling/floor	Multi purpose	C	plain
6758/18	300	200	64% PL F.R. - 36% PL TREVIRA CS	Class 1(I), M1 (F), B1&B2(D) BS 5867 (UK),EN 13773 (EU)	No	Vertical ceiling/floor	Multi purpose	C	plain
6758/19	300	200	64% PL F.R. - 36% PL TREVIRA CS	Class 1(I), M1 (F), B1&B2(D) BS 5867 (UK),EN 13773 (EU)	No	Vertical ceiling/floor	Multi purpose	C	plain
6758/20	300	200	64% PL F.R. - 36% PL TREVIRA CS	Class 1(I), M1 (F), B1&B2(D) BS 5867 (UK),EN 13773 (EU)	No	Vertical ceiling/floor	Multi purpose	C	plain
6758/21	300	200	64% PL F.R. - 36% PL TREVIRA CS	Class 1(I), M1 (F), B1&B2(D) BS 5867 (UK),EN 13773 (EU)	No	Vertical ceiling/floor	Multi purpose	C	plain

All coefficients have a possible tolerance of +/- 5%
Attention: colour shades may vary slightly from one dye-lot to another

Ref.	 cm	 g/m ²						Price category	Appearance
6758/23	300	200	64% PL F.R. - 36% PL TREVIRA CS	Class 1(I), M1 (F), B1&B2(D) BS 5867 (UK),EN 13773 (EU)	No	Vertical ceiling/floor	Multi purpose	C	plain
6758/24	300	200	64% PL F.R. - 36% PL TREVIRA CS	Class 1(I), M1 (F), B1&B2(D) BS 5867 (UK),EN 13773 (EU)	No	Vertical ceiling/floor	Multi purpose	C	plain
6758/25	300	200	64% PL F.R. - 36% PL TREVIRA CS	Class 1(I), M1 (F), B1&B2(D) BS 5867 (UK),EN 13773 (EU)	No	Vertical ceiling/floor	Multi purpose	C	plain
6758/26	300	200	64% PL F.R. - 36% PL TREVIRA CS	Class 1(I), M1 (F), B1&B2(D) BS 5867 (UK),EN 13773 (EU)	No	Vertical ceiling/floor	Multi purpose	C	plain
6758/29	300	200	64% PL F.R. - 36% PL TREVIRA CS	Class 1(I), M1 (F), B1&B2(D) BS 5867 (UK),EN 13773 (EU)	No	Vertical ceiling/floor	Multi purpose	C	plain
6758/30	300	200	64% PL F.R. - 36% PL TREVIRA CS	Class 1(I), M1 (F), B1&B2(D) BS 5867 (UK),EN 13773 (EU)	No	Vertical ceiling/floor	Multi purpose	C	plain
6758/31	300	200	64% PL F.R. - 36% PL TREVIRA CS	Class 1(I), M1 (F), B1&B2(D) BS 5867 (UK),EN 13773 (EU)	No	Vertical ceiling/floor	Multi purpose	C	plain
6758/32	300	200	64% PL F.R. - 36% PL TREVIRA CS	Class 1(I), M1 (F), B1&B2(D) BS 5867 (UK),EN 13773 (EU)	No	Vertical ceiling/floor	Multi purpose	C	plain
6758/33	300	200	64% PL F.R. - 36% PL TREVIRA CS	Class 1(I), M1 (F), B1&B2(D) BS 5867 (UK),EN 13773 (EU)	No	Vertical ceiling/floor	Multi purpose	C	plain

All coefficients have a possible tolerance of +/- 5%
Attention: colour shades may vary slightly from one dye-lot to another



TESSUTI & SARTORIA



Width



Weight



Flame retardant



Composition



Transparency



Upholstery



Leaded



Selvege

MAINTENANCE

WASH IN MAX 30°, DO NOT BLEACH, DO NOT TUMBLE DRY, IRON ON LOW SETTING, CAN BE DRY CLEANED, DRIP DRY, SHRINKAGE AFTER FIRST WASH 0-2% FOR FURTHER INDICATIONS PLEASE CONSULT THE INDIVIDUAL PRODUCT SPECIFICATIONS IN THE ATELIER CATALOGUE.