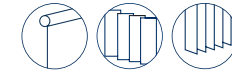
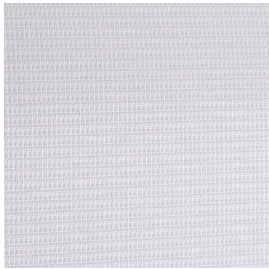


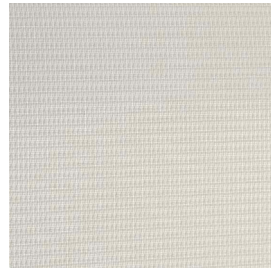
Luce F.R.



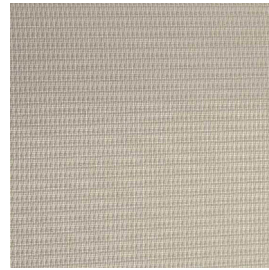
LU/001



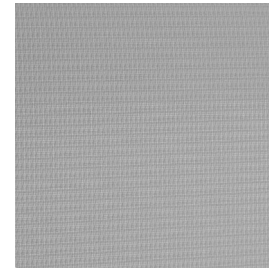
LU/002



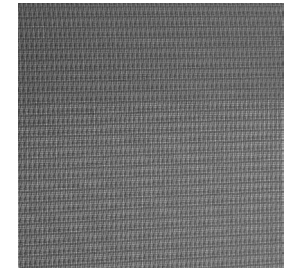
LU/003



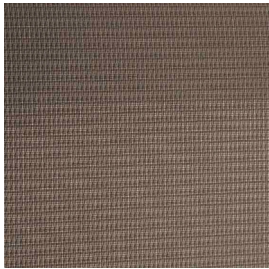
LU/004



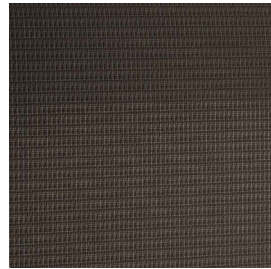
LU/005



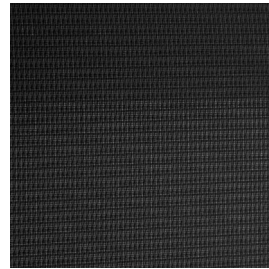
LU/006










LU/007














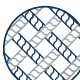








LU/008



Ref.	 cm	 mm	 g/m ²															INT
LU/001	300	0,30	150	100% PL Trevira CS	Classe 1 (I),M1(F),B1(D)	Attenuante	OEKO-TEX, REACH	5/6	No	No	5,00	51	43	6	52	47	0,49	88
LU/002	300	0,30	150	100% PL Trevira CS	Classe 1 (I),M1(F),B1(D)	Attenuante	OEKO-TEX, REACH	5/6	No	No	5,00	44	49	7	44	53	0,46	89
LU/003	300	0,30	150	100% PL Trevira CS	Classe 1 (I),M1(F),B1(D)	Attenuante	OEKO-TEX, REACH	5/6	No	No	5,00	37	49	14	34	50	0,45	87
LU/004	300	0,30	150	100% PL Trevira CS	Classe 1 (I),M1(F),B1(D)	Attenuante	OEKO-TEX, REACH	5/6	No	No	5,00	42	45	13	36	44	0,47	89
LU/005	300	0,30	150	100% PL Trevira CS	Classe 1 (I),M1(F),B1(D)	Attenuante	OEKO-TEX, REACH	5/6	No	No	5,00	31	33	36	12	15	0,53	92
LU/006	300	0,30	150	100% PL Trevira CS	Classe 1 (I),M1(F),B1(D)	Attenuante	OEKO-TEX, REACH	5/6	No	No	5,00	29	31	40	9	13	0,53	94
LU/007	300	0,30	150	100% PL Trevira CS	Classe 1 (I),M1(F),B1(D)	Attenuante	OEKO-TEX, REACH	5/6	No	No	5,00	25	31	44	3	7	0,52	97
LU/008	300	0,30	150	100% PL Trevira CS	Classe 1 (I),M1(F),B1(D)	Attenuante	OEKO-TEX, REACH	5/6	No	No	5,00	23	26	51	3	3	0,55	96

Tutti i coefficienti potrebbero avere una tolleranza di +/- 5%
 Attenzione: La tonalità dei colori può variare leggermente da lotto a lotto

 Larghezza	 Composizione	 Certificazione	 IMO - Tessuti per settore navale	 Assorbimento solare	 G tot Type C GLASS	 Trama - Ordito N5 cm
 Spessore	 Ignifugo	 Solidità luce	 Trasmissione solare	 Trasmissione luce visibile	 Abbattimento UV	 Fattore di apertura
 Peso	 Trasparenza	 Saldabilità	 Riflessione	 Riflessione luce visibile	 Assorbimento acustico	

MANUTENZIONE Maneggiare il tessuto con cura: mani pulite ed asciutte. Non utilizzare solventi o sostanze abrasive che potrebbero danneggiare il tessuto. Durante la pulizia delle finestre, la tenda dovrà essere sollevata per evitare qualsiasi contatto diretto o indiretto di prodotti per la pulizia sul tessuto. Rimuovere la polvere con aspirapolvere o aria compressa evitare di tirare o allungare il tessuto. Per i tessuti rivestiti in PVC, pulire con una spugna leggermente umida, se necessario, con spugna imbevuta di acqua e sapone. Risciacquare con acqua pulita. Non strofinare con insistenza. Lasciare la tenda abbassata fino a completa asciugatura.