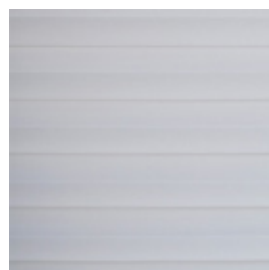


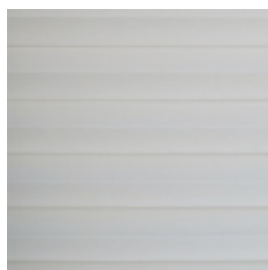
# *Gea F.R. Plì 20mm*



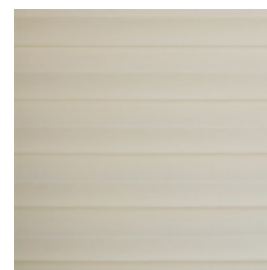
**TP/3800/01**



**TP/3800/02**



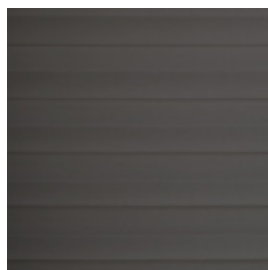
**TP/3800/03**



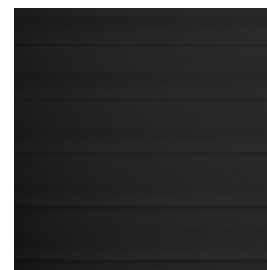
**TP/3800/04**



**TP/3800/05**



**TP/3800/06**



Name	Cat.	Ref.																									
Reference Standard						UNI EN ISO 2286-2	UNI EN ISO 2286-3	UNI EN 14501	UNI EN 14501	UNI EN 14501	UNI EN 14501	UNI EN 14501	UNI EN 14501	UNI EN 14501	UNI EN 14501	UNI EN 14501	UNI EN 14501	UNI EN 14501	UNI EN 14501	UNI EN 14501	UNI EN 14501	EN ISO 11654	UNI EN ISO 1421	UNI EN ISO 1421	UNI EN ISO 105 B02		

Gea F.R. Pli 20mm	GE	TP/3800/01	100% post-consumer recycled PET	OEKO-TEX RECYCLED	B1(D)	235	86	0,18		○	54	42	4	54	43	0,44												5/7			
Gea F.R. Pli 20mm	GE	TP/3800/02			B1(D)	235	86	0,18		○	51	44	5	51	47	0,43													5/7		
Gea F.R. Pli 20mm	GE	TP/3800/03			B1(D)	235	86	0,18		○	49	44	7	49	47	0,43													5/7		
Gea F.R. Pli 20mm	GE	TP/3800/04			B1(D)	235	86	0,18		○	43	39	18	39	33	0,45													5/7		
Gea F.R. Pli 20mm	GE	TP/3800/05			B1(D)	235	86	0,18		○	32	29	39	18	18	0,48													5/7		
Gea F.R. Pli 20mm	GE	TP/3800/06			B1(D)	235	86	0,18		○	24	23	53	2	5	0,50												5/7			

Tutti i coefficienti potrebbero avere una tolleranza di +/- 5%  
 Attenzione: La tonalità dei colori può variare leggermente da lotto a lotto

	Width		Composition		Health certification		IMO - Fabrics for marine industry		Solar reflection		Light absorption		Sound absorption
	Thickness		Flame retardant		Colour fastness		Openess factor		Solar absorption		G tot Type C - GLASS		Warp - Weft N5 cm
	Weight		Transparency		Sealable		Solar transmission		Light transmission		UV reduction		Glare control

**MAINTENANCE** DO NOT USE WATER: INTERVENE USING DRY METHODS FOR REMOVING DUST DEPOSITS.