

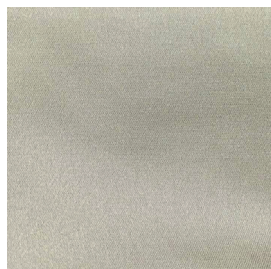
ELITE F.R.



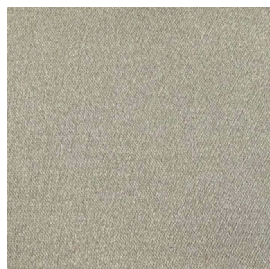
6760/01



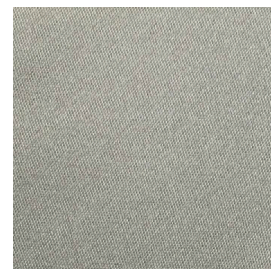
6760/02



6760/03



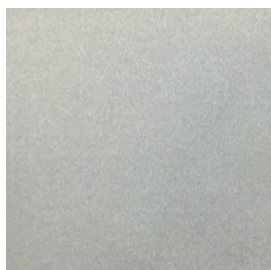
6760/04



6760/05



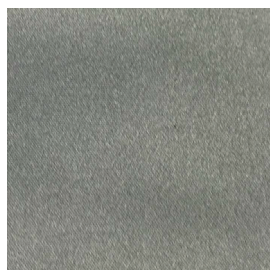
6760/06



6760/07



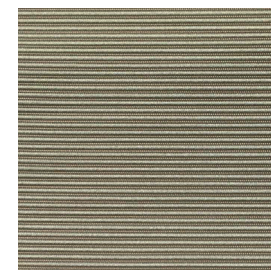
6760/08



6760/11



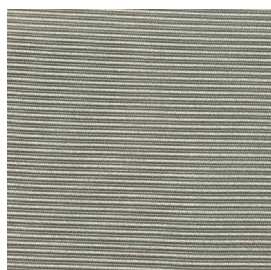
6760/12



6760/13



6760/14



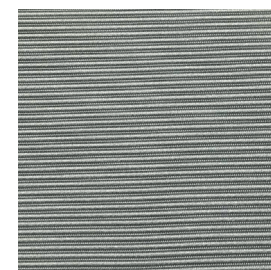
6760/15



6760/16



6760/17



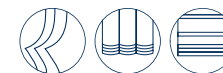


TESSUTI & SARTORIA

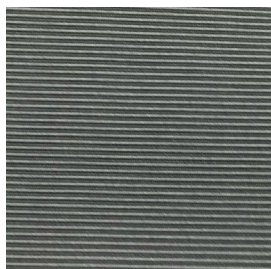
ATELIER 1963 - ELITE F.R.

MOTTURA

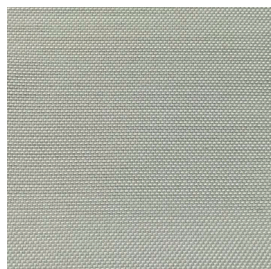
ELITE F.R.



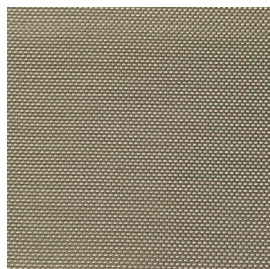
6760/18



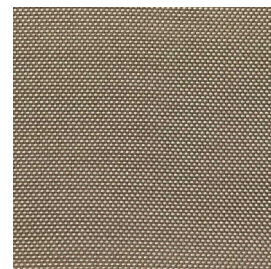
6760/21



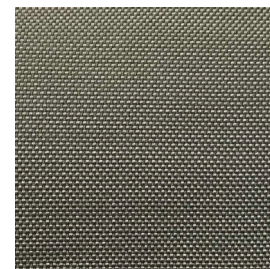
6760/22



6760/23



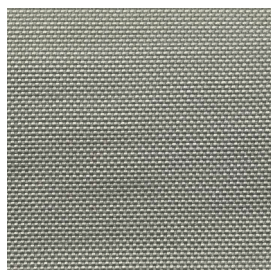
6760/24



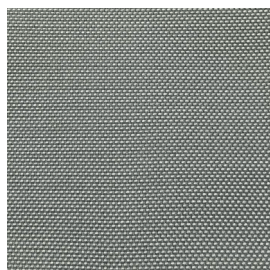
6760/25



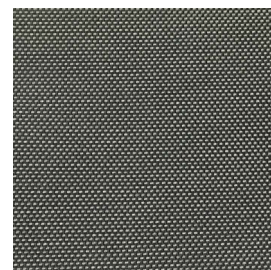
6760/26



6760/27











6760/28



Ref.	 cm	 g/m ²							Price category	Appearance
6760/01	300	277	51% PL TREVIRA CS - 49% PL	Class 1(I), M1 (F), B1&B2(D) BS 5867 (UK),EN 13773 (EU), IMO	No	Vertical ceiling/ floor	Multi purpose	Upholstery	D	plain
6760/02	300	277	51% PL TREVIRA CS - 49% PL	Class 1(I), M1 (F), B1&B2(D) BS 5867 (UK),EN 13773 (EU), IMO	No	Vertical ceiling/ floor	Multi purpose	Upholstery	D	plain
6760/03	300	277	51% PL TREVIRA CS - 49% PL	Class 1(I), M1 (F), B1&B2(D) BS 5867 (UK),EN 13773 (EU), IMO	No	Vertical ceiling/ floor	Multi purpose	Upholstery	D	plain
6760/04	300	277	51% PL TREVIRA CS - 49% PL	Class 1(I), M1 (F), B1&B2(D) BS 5867 (UK),EN 13773 (EU), IMO	No	Vertical ceiling/ floor	Multi purpose	Upholstery	D	plain
6760/05	300	277	51% PL TREVIRA CS - 49% PL	Class 1(I), M1 (F), B1&B2(D) BS 5867 (UK),EN 13773 (EU), IMO	No	Vertical ceiling/ floor	Multi purpose	Upholstery	D	plain
6760/06	300	277	51% PL TREVIRA CS - 49% PL	Class 1(I), M1 (F), B1&B2(D) BS 5867 (UK),EN 13773 (EU), IMO	No	Vertical ceiling/ floor	Multi purpose	Upholstery	D	plain
6760/07	300	277	51% PL TREVIRA CS - 49% PL	Class 1(I), M1 (F), B1&B2(D) BS 5867 (UK),EN 13773 (EU), IMO	No	Vertical ceiling/ floor	Multi purpose	Upholstery	D	plain
6760/08	300	277	51% PL TREVIRA CS - 49% PL	Class 1(I), M1 (F), B1&B2(D) BS 5867 (UK),EN 13773 (EU), IMO	No	Vertical ceiling/ floor	Multi purpose	Upholstery	D	plain
6760/11	300	277	51% PL TREVIRA CS - 49% PL	Class 1(I), M1 (F), B1&B2(D) BS 5867 (UK),EN 13773 (EU), IMO	No	Vertical ceiling/ floor	Multi purpose	Upholstery	D	plain
6760/12	300	277	51% PL TREVIRA CS - 49% PL	Class 1(I), M1 (F), B1&B2(D) BS 5867 (UK),EN 13773 (EU), IMO	No	Vertical ceiling/ floor	Multi purpose	Upholstery	D	plain
6760/13	300	277	51% PL TREVIRA CS - 49% PL	Class 1(I), M1 (F), B1&B2(D) BS 5867 (UK),EN 13773 (EU), IMO	No	Vertical ceiling/ floor	Multi purpose	Upholstery	D	plain
6760/14	300	277	51% PL TREVIRA CS - 49% PL	Class 1(I), M1 (F), B1&B2(D) BS 5867 (UK),EN 13773 (EU), IMO	No	Vertical ceiling/ floor	Multi purpose	Upholstery	D	plain
6760/15	300	277	51% PL TREVIRA CS - 49% PL	Class 1(I), M1 (F), B1&B2(D) BS 5867 (UK),EN 13773 (EU), IMO	No	Vertical ceiling/ floor	Multi purpose	Upholstery	D	plain
6760/16	300	277	51% PL TREVIRA CS - 49% PL	Class 1(I), M1 (F), B1&B2(D) BS 5867 (UK),EN 13773 (EU), IMO	No	Vertical ceiling/ floor	Multi purpose	Upholstery	D	plain

All coefficients have a possible tolerance of +/- 5%
Attention: colour shades may vary slightly from one dye-lot to another

Ref.	 cm	 g/m ²							Price category	Appearance
6760/17	300	277	51% PL TREVIRA CS - 49% PL	Class 1(I), M1 (F), B1&B2(D) BS 5867 (UK),EN 13773 (EU), IMO	No	Vertical ceiling/ floor	Multi purpose	Upholstery	D	plain
6760/18	300	277	51% PL TREVIRA CS - 49% PL	Class 1(I), M1 (F), B1&B2(D) BS 5867 (UK),EN 13773 (EU), IMO	No	Vertical ceiling/ floor	Multi purpose	Upholstery	D	plain
6760/21	300	277	51% PL TREVIRA CS - 49% PL	Class 1(I), M1 (F), B1&B2(D) BS 5867 (UK),EN 13773 (EU), IMO	No	Vertical ceiling/ floor	Multi purpose	Upholstery	D	plain
6760/22	300	277	51% PL TREVIRA CS - 49% PL	Class 1(I), M1 (F), B1&B2(D) BS 5867 (UK),EN 13773 (EU), IMO	No	Vertical ceiling/ floor	Multi purpose	Upholstery	D	plain
6760/23	300	277	51% PL TREVIRA CS - 49% PL	Class 1(I), M1 (F), B1&B2(D) BS 5867 (UK),EN 13773 (EU), IMO	No	Vertical ceiling/ floor	Multi purpose	Upholstery	D	plain
6760/24	300	277	51% PL TREVIRA CS - 49% PL	Class 1(I), M1 (F), B1&B2(D) BS 5867 (UK),EN 13773 (EU), IMO	No	Vertical ceiling/ floor	Multi purpose	Upholstery	D	plain
6760/25	300	277	51% PL TREVIRA CS - 49% PL	Class 1(I), M1 (F), B1&B2(D) BS 5867 (UK),EN 13773 (EU), IMO	No	Vertical ceiling/ floor	Multi purpose	Upholstery	D	plain
6760/26	300	277	51% PL TREVIRA CS - 49% PL	Class 1(I), M1 (F), B1&B2(D) BS 5867 (UK),EN 13773 (EU), IMO	No	Vertical ceiling/ floor	Multi purpose	Upholstery	D	plain
6760/27	300	277	51% PL TREVIRA CS - 49% PL	Class 1(I), M1 (F), B1&B2(D) BS 5867 (UK),EN 13773 (EU), IMO	No	Vertical ceiling/ floor	Multi purpose	Upholstery	D	plain
6760/28	300	277	51% PL TREVIRA CS - 49% PL	Class 1(I), M1 (F), B1&B2(D) BS 5867 (UK),EN 13773 (EU), IMO	No	Vertical ceiling/ floor	Multi purpose	Upholstery	D	plain

All coefficients have a possible tolerance of +/- 5%
Attention: colour shades may vary slightly from one dye-lot to another



TESSUTI & SARTORIA



Width



Weight



Flame retardant



Composition



Transparency



Upholstery



Leaded



Selvedge

MAINTENANCE

WASH IN MAX 30°, DO NOT BLEACH, DO NOT TUMBLE DRY, IRON ON LOW SETTING, CAN BE DRY CLEANED, DRIP DRY, SHRINKAGE AFTER FIRST WASH 0-2% FOR FURTHER INDICATIONS PLEASE CONSULT THE INDIVIDUAL PRODUCT SPECIFICATIONS IN THE ATELIER CATALOGUE.