

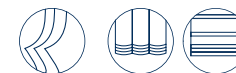


TESSUTI & SARTORIA

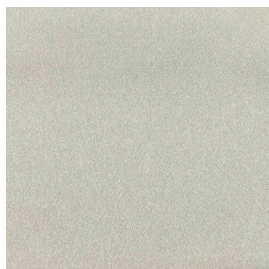
ATELIER 1963 - ELITE F.R.

ELITE F.R.

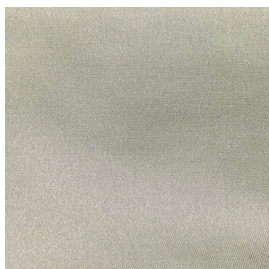
MOTTURA



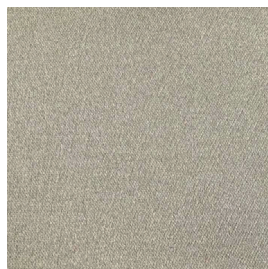
6760/01



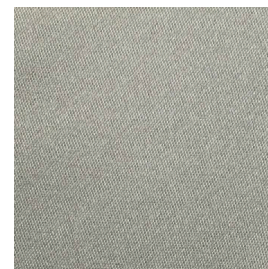
6760/02



6760/03



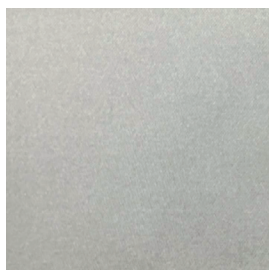
6760/04



6760/05



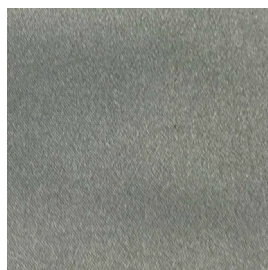
6760/06



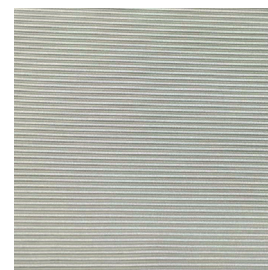
6760/07



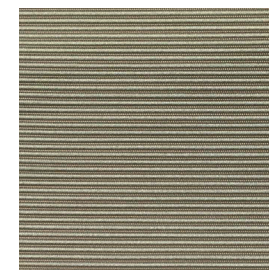
6760/08



6760/11



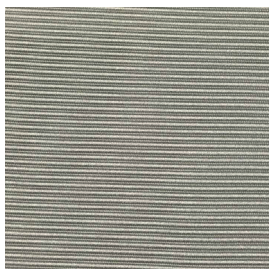
6760/12



6760/13



6760/14



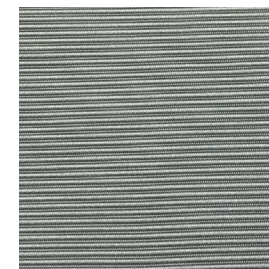
6760/15



6760/16



6760/17



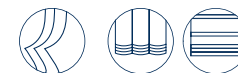


TESSUTI & SARTORIA

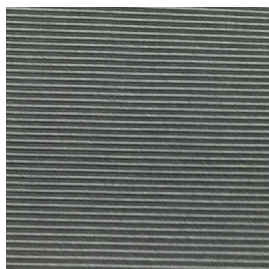
ATELIER 1963 - ELITE F.R.

ELITE F.R.

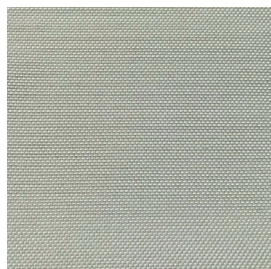
MOTTURA



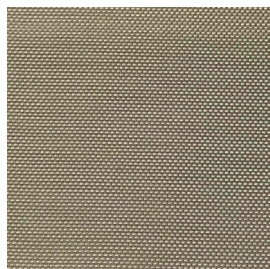
6760/18



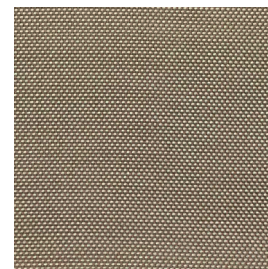
6760/21



6760/22



6760/23



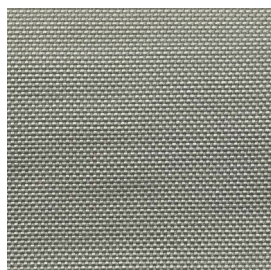
6760/24



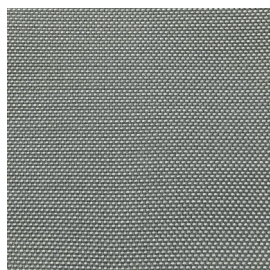
6760/25



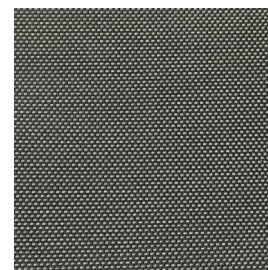
6760/26



6760/27




6760/28



Ref.	 cm	 g/m ²							Categoria Prezzo	Aspetto
6760/01	300	277	51% PL TREVIRA CS - 49% PL	Class 1(I), M1 (F), B1&B2(D) BS 5867 (UK),EN 13773 (EU), IMO	No	Verticale - soffitto/pavimento	Oscurante	Imbottito	D	Unito
6760/02	300	277	51% PL TREVIRA CS - 49% PL	Class 1(I), M1 (F), B1&B2(D) BS 5867 (UK),EN 13773 (EU), IMO	No	Verticale - soffitto/pavimento	Oscurante	Imbottito	D	Unito
6760/03	300	277	51% PL TREVIRA CS - 49% PL	Class 1(I), M1 (F), B1&B2(D) BS 5867 (UK),EN 13773 (EU), IMO	No	Verticale - soffitto/pavimento	Oscurante	Imbottito	D	Unito
6760/04	300	277	51% PL TREVIRA CS - 49% PL	Class 1(I), M1 (F), B1&B2(D) BS 5867 (UK),EN 13773 (EU), IMO	No	Verticale - soffitto/pavimento	Oscurante	Imbottito	D	Unito
6760/05	300	277	51% PL TREVIRA CS - 49% PL	Class 1(I), M1 (F), B1&B2(D) BS 5867 (UK),EN 13773 (EU), IMO	No	Verticale - soffitto/pavimento	Oscurante	Imbottito	D	Unito
6760/06	300	277	51% PL TREVIRA CS - 49% PL	Class 1(I), M1 (F), B1&B2(D) BS 5867 (UK),EN 13773 (EU), IMO	No	Verticale - soffitto/pavimento	Oscurante	Imbottito	D	Unito
6760/07	300	277	51% PL TREVIRA CS - 49% PL	Class 1(I), M1 (F), B1&B2(D) BS 5867 (UK),EN 13773 (EU), IMO	No	Verticale - soffitto/pavimento	Oscurante	Imbottito	D	Unito
6760/08	300	277	51% PL TREVIRA CS - 49% PL	Class 1(I), M1 (F), B1&B2(D) BS 5867 (UK),EN 13773 (EU), IMO	No	Verticale - soffitto/pavimento	Oscurante	Imbottito	D	Unito
6760/11	300	277	51% PL TREVIRA CS - 49% PL	Class 1(I), M1 (F), B1&B2(D) BS 5867 (UK),EN 13773 (EU), IMO	No	Verticale - soffitto/pavimento	Oscurante	Imbottito	D	Unito
6760/12	300	277	51% PL TREVIRA CS - 49% PL	Class 1(I), M1 (F), B1&B2(D) BS 5867 (UK),EN 13773 (EU), IMO	No	Verticale - soffitto/pavimento	Oscurante	Imbottito	D	Unito
6760/13	300	277	51% PL TREVIRA CS - 49% PL	Class 1(I), M1 (F), B1&B2(D) BS 5867 (UK),EN 13773 (EU), IMO	No	Verticale - soffitto/pavimento	Oscurante	Imbottito	D	Unito
6760/14	300	277	51% PL TREVIRA CS - 49% PL	Class 1(I), M1 (F), B1&B2(D) BS 5867 (UK),EN 13773 (EU), IMO	No	Verticale - soffitto/pavimento	Oscurante	Imbottito	D	Unito
6760/15	300	277	51% PL TREVIRA CS - 49% PL	Class 1(I), M1 (F), B1&B2(D) BS 5867 (UK),EN 13773 (EU), IMO	No	Verticale - soffitto/pavimento	Oscurante	Imbottito	D	Unito
6760/16	300	277	51% PL TREVIRA CS - 49% PL	Class 1(I), M1 (F), B1&B2(D) BS 5867 (UK),EN 13773 (EU), IMO	No	Verticale - soffitto/pavimento	Oscurante	Imbottito	D	Unito

Tutti i coefficienti potrebbero avere una tolleranza di +/- 5%
 Attenzione: La tonalità dei colori può variare leggermente da lotto a lotto

Ref.	 cm	 g/m ²							Categoria Prezzo	Aspetto
6760/17	300	277	51% PL TREVIRA CS - 49% PL	Class 1(I), M1 (F), B1&B2(D) BS 5867 (UK),EN 13773 (EU), IMO	No	Verticale - soffitto/pavimento	Oscurante	Imbottito	D	Unito
6760/18	300	277	51% PL TREVIRA CS - 49% PL	Class 1(I), M1 (F), B1&B2(D) BS 5867 (UK),EN 13773 (EU), IMO	No	Verticale - soffitto/pavimento	Oscurante	Imbottito	D	Unito
6760/21	300	277	51% PL TREVIRA CS - 49% PL	Class 1(I), M1 (F), B1&B2(D) BS 5867 (UK),EN 13773 (EU), IMO	No	Verticale - soffitto/pavimento	Oscurante	Imbottito	D	Unito
6760/22	300	277	51% PL TREVIRA CS - 49% PL	Class 1(I), M1 (F), B1&B2(D) BS 5867 (UK),EN 13773 (EU), IMO	No	Verticale - soffitto/pavimento	Oscurante	Imbottito	D	Unito
6760/23	300	277	51% PL TREVIRA CS - 49% PL	Class 1(I), M1 (F), B1&B2(D) BS 5867 (UK),EN 13773 (EU), IMO	No	Verticale - soffitto/pavimento	Oscurante	Imbottito	D	Unito
6760/24	300	277	51% PL TREVIRA CS - 49% PL	Class 1(I), M1 (F), B1&B2(D) BS 5867 (UK),EN 13773 (EU), IMO	No	Verticale - soffitto/pavimento	Oscurante	Imbottito	D	Unito
6760/25	300	277	51% PL TREVIRA CS - 49% PL	Class 1(I), M1 (F), B1&B2(D) BS 5867 (UK),EN 13773 (EU), IMO	No	Verticale - soffitto/pavimento	Oscurante	Imbottito	D	Unito
6760/26	300	277	51% PL TREVIRA CS - 49% PL	Class 1(I), M1 (F), B1&B2(D) BS 5867 (UK),EN 13773 (EU), IMO	No	Verticale - soffitto/pavimento	Oscurante	Imbottito	D	Unito
6760/27	300	277	51% PL TREVIRA CS - 49% PL	Class 1(I), M1 (F), B1&B2(D) BS 5867 (UK),EN 13773 (EU), IMO	No	Verticale - soffitto/pavimento	Oscurante	Imbottito	D	Unito
6760/28	300	277	51% PL TREVIRA CS - 49% PL	Class 1(I), M1 (F), B1&B2(D) BS 5867 (UK),EN 13773 (EU), IMO	No	Verticale - soffitto/pavimento	Oscurante	Imbottito	D	Unito

Tutti i coefficienti potrebbero avere una tolleranza di +/- 5%
Attenzione: La tonalità dei colori può variare leggermente da lotto a lotto



TESSUTI & SARTORIA



Larghezza



Ignifugo



Trasparenza



Piombato



Peso



Composizione



Imbottito



Cimosa

MANUTENZIONE

IN ACQUA A 30° MAX, NO
CANDEGGIO, NO TAMBURO,
FERRO A 1, SÌ A SECCO,
STENDERE APPESO