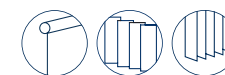
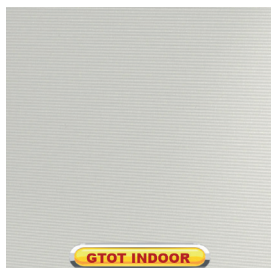


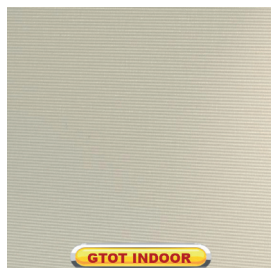
Ecoscreen F.R.



EC/001



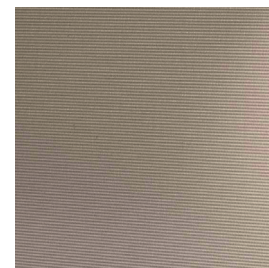
EC/002



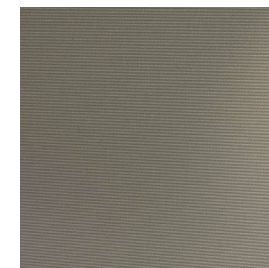
EC/003



EC/004



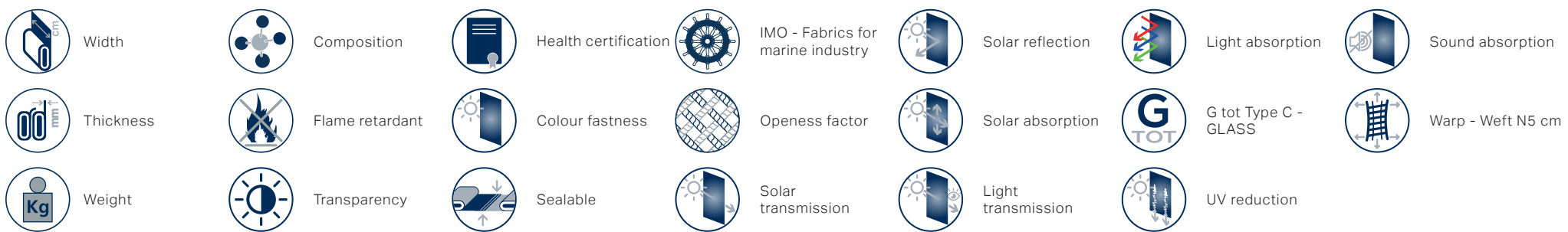
EC/005





EC/001	270	0,38	230	100% RECYCLED PET	Classe 1 (I), M1(F), B1(D),NFPA 701(US), EN 13501-1 B-s2-d0	Low Transparent	CRADLE TO CRADLE, GREENGUARD GOLD, RECYCLED	6/8	No	No	1.00	26	60	14	25	64	0,35	95	0,60	114	127
EC/002	270	0,38	230	100% RECYCLED PET	Classe 1 (I), M1(F), B1(D),NFPA 701(US), EN 13501-1 B-s2-d0	Low Transparent	CRADLE TO CRADLE, GREENGUARD GOLD, RECYCLED	6/8	No	No	1.00	25	61	14	23	66	0,34	95	0,60	114	127
EC/003	270	0,38	230	100% RECYCLED PET	Classe 1 (I), M1(F), B1(D),NFPA 701(US), EN 13501-1 B-s2-d0	Low Transparent	CRADLE TO CRADLE, GREENGUARD GOLD, RECYCLED	6/8	No	No	1.00	21	59	20	18	60	0,35	99	0,60	114	127
EC/004	270	0,38	230	100% RECYCLED PET	Classe 1 (I), M1(F), B1(D),NFPA 701(US), EN 13501-1 B-s2-d0	Low Transparent	CRADLE TO CRADLE, GREENGUARD GOLD, RECYCLED	6/8	No	No	1.00	18	50	32	11	45	0,37	99	0,60	114	127
EC/005	270	0,38	230	100% RECYCLED PET	Classe 1 (I), M1(F), B1(D),NFPA 701(US), EN 13501-1 B-s2-d0	Low Transparent	CRADLE TO CRADLE, GREENGUARD GOLD, RECYCLED	6/8	No	No	1.00	8	31	61	6	31	0,42	99	0,60	114	127

All coefficients have a possible tolerance of +/- 5%
 Attention: colour shades may vary slightly from one dye lot to another



MAINTENANCE HANDLE THE FABRIC WITH CARE, USING CLEAN DRY HANDS. DO NOT USE SOLVENTS OR ANY ABRASIVE SUBSTANCES THAT MAY DAMAGE THE FABRIC. WHEN CLEANING WINDOWS THE BLIND MUST BE RAISED TO AVOID ANY DIRECT OR INDIRECT SPRAY OF CLEANING PRODUCTS. REMOVE THE DUST WITH A VACUUM CLEANER OR USING COMPRESSED AIR, AVOID PULLING OR STRETCHING FABRIC. ONLY FOR PVC COATED PRODUCTS, CLEAN WITH A DAMP CLOTH OR A SPONGE DIPPED IN SOAPY WATER IF NECESSARY. RINSE WITH CLEAN WATER. DO NOT RUB. LEAVE THE BLIND DOWN UNTIL COMPLETELY DRY.