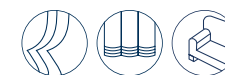


ATLANTIS F.R.



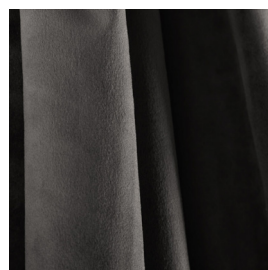
3483/01



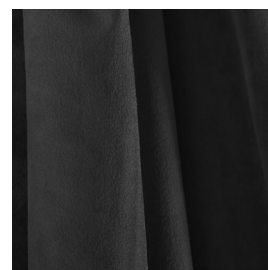
3483/02



3483/03



3483/05



3483/06



3483/09



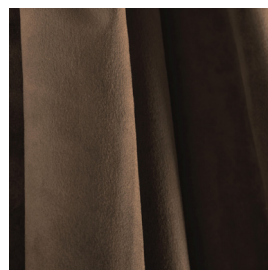
3483/12



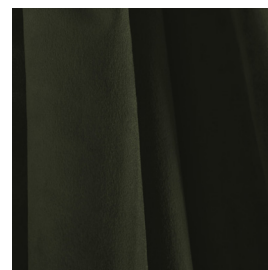
3483/13



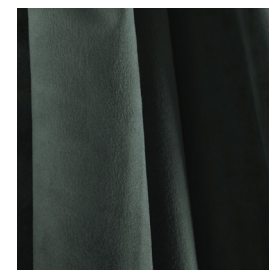
3483/14



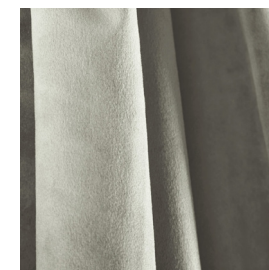
3483/18



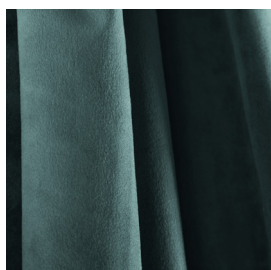
3483/21



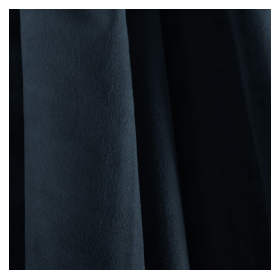
3483/22



3483/23



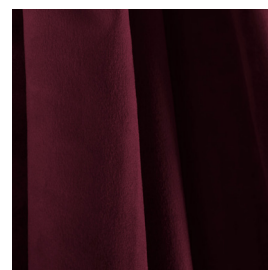
3483/24



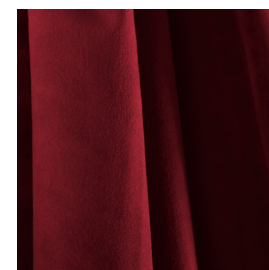
3483/29



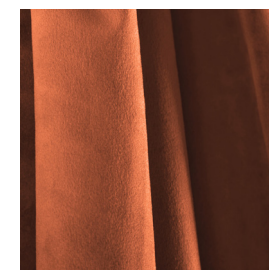
3483/35



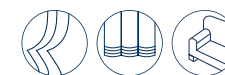
3483/37



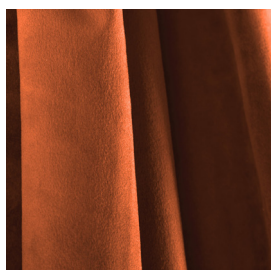
3483/38



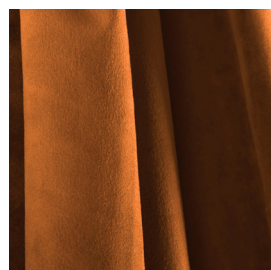
ATLANTIS F.R.



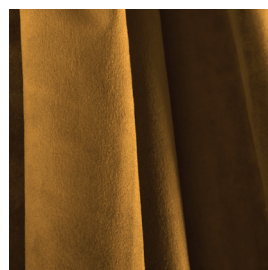
3483/39



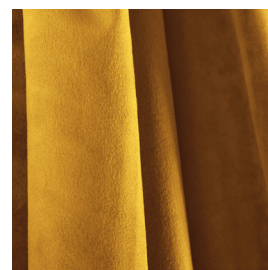
3483/40



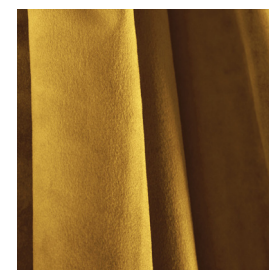
3483/41



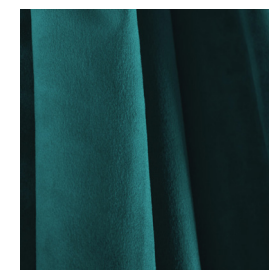
3483/42



3483/43



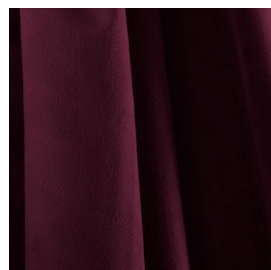
3483/52



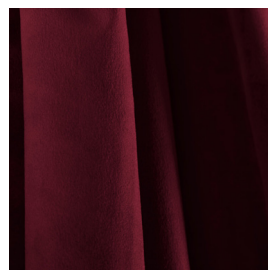
3483/53











3483/54



3483/55



Ref.	 cm	 g/m ²							Price category	Appearance
3483/01	300	315	100% PL F.R.	Class 1(I), M1 (F), B1&B2(D) BS 5867 (UK), EN 13773 (EU), IMO, NFPA 701 (US)	No	Horizontal edge to edge	Dimout	Upholstery	D	plain
3483/02	300	315	100% PL F.R.	Class 1(I), M1 (F), B1&B2(D) BS 5867 (UK), EN 13773 (EU), IMO, NFPA 701 (US)	No	Horizontal edge to edge	Dimout	Upholstery	D	plain
3483/03	300	315	100% PL F.R.	Class 1(I), M1 (F), B1&B2(D) BS 5867 (UK), EN 13773 (EU), IMO, NFPA 701 (US)	No	Horizontal edge to edge	Dimout	Upholstery	D	plain
3483/05	300	315	100% PL F.R.	Class 1(I), M1 (F), B1&B2(D) BS 5867 (UK), EN 13773 (EU), IMO, NFPA 701 (US)	No	Horizontal edge to edge	Dimout	Upholstery	D	plain
3483/06	300	315	100% PL F.R.	Class 1(I), M1 (F), B1&B2(D) BS 5867 (UK), EN 13773 (EU), IMO, NFPA 701 (US)	No	Horizontal edge to edge	Dimout	Upholstery	D	plain
3483/09	300	315	100% PL F.R.	Class 1(I), M1 (F), B1&B2(D) BS 5867 (UK), EN 13773 (EU), IMO, NFPA 701 (US)	No	Horizontal edge to edge	Dimout	Upholstery	D	plain
3483/12	300	315	100% PL F.R.	Class 1(I), M1 (F), B1&B2(D) BS 5867 (UK), EN 13773 (EU), IMO, NFPA 701 (US)	No	Horizontal edge to edge	Dimout	Upholstery	D	plain
3483/13	300	315	100% PL F.R.	Class 1(I), M1 (F), B1&B2(D) BS 5867 (UK), EN 13773 (EU), IMO, NFPA 701 (US)	No	Horizontal edge to edge	Dimout	Upholstery	D	plain
3483/14	300	315	100% PL F.R.	Class 1(I), M1 (F), B1&B2(D) BS 5867 (UK), EN 13773 (EU), IMO, NFPA 701 (US)	No	Horizontal edge to edge	Dimout	Upholstery	D	plain

All coefficients have a possible tolerance of +/- 5%
 Attention: colour shades may vary slightly from one dye-lot to another



Width



Flame retardant



Transparency



Leaded



Weight



Composition











Upholstery



Selvedge

MAINTENANCE

WASH IN MAX 30°, DO NOT BLEACH, DO NOT TUMBLE DRY, IRON ON LOW SETTING, CAN BE DRY CLEANED, DRIP DRY, SHRINKAGE AFTER FIRST WASH 0-2% FOR FURTHER INDICATIONS PLEASE CONSULT THE INDIVIDUAL PRODUCT SPECIFICATIONS IN THE ATELIER CATALOGUE.

Ref.	 cm	 g/m ²							Price category	Appearance	
3483/18	300	315	100% PL F.R.	Class 1(I), M1 (F), B1&B2(D) BS 5867 (UK),EN 13773 (EU), IMO, NFPA 701 (US)	No		Horizontal edge to edge	Dimout	Upholstery	D	plain
3483/21	300	315	100% PL F.R.	Class 1(I), M1 (F), B1&B2(D) BS 5867 (UK),EN 13773 (EU), IMO, NFPA 701 (US)	No		Horizontal edge to edge	Dimout	Upholstery	D	plain
3483/22	300	315	100% PL F.R.	Class 1(I), M1 (F), B1&B2(D) BS 5867 (UK),EN 13773 (EU), IMO, NFPA 701 (US)	No		Horizontal edge to edge	Dimout	Upholstery	D	plain
3483/23	300	315	100% PL F.R.	Class 1(I), M1 (F), B1&B2(D) BS 5867 (UK),EN 13773 (EU), IMO, NFPA 701 (US)	No		Horizontal edge to edge	Dimout	Upholstery	D	plain
3483/24	300	315	100% PL F.R.	Class 1(I), M1 (F), B1&B2(D) BS 5867 (UK),EN 13773 (EU), IMO, NFPA 701 (US)	No		Horizontal edge to edge	Dimout	Upholstery	D	plain
3483/29	300	315	100% PL F.R.	Class 1(I), M1 (F), B1&B2(D) BS 5867 (UK),EN 13773 (EU), IMO, NFPA 701 (US)	No		Horizontal edge to edge	Dimout	Upholstery	D	plain
3483/35	300	315	100% PL F.R.	Class 1(I), M1 (F), B1&B2(D) BS 5867 (UK),EN 13773 (EU), IMO, NFPA 701 (US)	No		Horizontal edge to edge	Dimout	Upholstery	D	plain
3483/37	300	315	100% PL F.R.	Class 1(I), M1 (F), B1&B2(D) BS 5867 (UK),EN 13773 (EU), IMO, NFPA 701 (US)	No		Horizontal edge to edge	Dimout	Upholstery	D	plain
3483/38	300	315	100% PL F.R.	Class 1(I), M1 (F), B1&B2(D) BS 5867 (UK),EN 13773 (EU), IMO, NFPA 701 (US)	No		Horizontal edge to edge	Dimout	Upholstery	D	plain

All coefficients have a possible tolerance of +/- 5%
 Attention: colour shades may vary slightly from one dye-lot to another



Width



Flame retardant



Transparency



Leaded



Weight



Composition











Upholstery



Selvedge

MAINTENANCE

WASH IN MAX 30°, DO NOT BLEACH, DO NOT TUMBLE DRY, IRON ON LOW SETTING, CAN BE DRY CLEANED, DRIP DRY, SHRINKAGE AFTER FIRST WASH 0-2% FOR FURTHER INDICATIONS PLEASE CONSULT THE INDIVIDUAL PRODUCT SPECIFICATIONS IN THE ATELIER CATALOGUE.

Ref.	 cm	 g/m ²							Price category	Appearance	
3483/39	300	315	100% PL F.R.	Class 1(I), M1 (F), B1&B2(D) BS 5867 (UK),EN 13773 (EU), IMO, NFPA 701 (US)	No		Horizontal edge to edge	Dimout	Upholstery	D	plain
3483/40	300	315	100% PL F.R.	Class 1(I), M1 (F), B1&B2(D) BS 5867 (UK),EN 13773 (EU), IMO, NFPA 701 (US)	No		Horizontal edge to edge	Dimout	Upholstery	D	plain
3483/41	300	315	100% PL F.R.	Class 1(I), M1 (F), B1&B2(D) BS 5867 (UK),EN 13773 (EU), IMO, NFPA 701 (US)	No		Horizontal edge to edge	Dimout	Upholstery	D	plain
3483/42	300	315	100% PL F.R.	Class 1(I), M1 (F), B1&B2(D) BS 5867 (UK),EN 13773 (EU), IMO, NFPA 701 (US)	No		Horizontal edge to edge	Dimout	Upholstery	D	plain
3483/43	300	315	100% PL F.R.	Class 1(I), M1 (F), B1&B2(D) BS 5867 (UK),EN 13773 (EU), IMO, NFPA 701 (US)	No		Horizontal edge to edge	Dimout	Upholstery	D	plain
3483/52	300	315	100% PL F.R.	Class 1(I), M1 (F), B1&B2(D) BS 5867 (UK),EN 13773 (EU), IMO, NFPA 701 (US)	No		Horizontal edge to edge	Dimout	Upholstery	D	plain
3483/53	300	315	100% PL F.R.	Class 1(I), M1 (F), B1&B2(D) BS 5867 (UK),EN 13773 (EU), IMO, NFPA 701 (US)	No		Horizontal edge to edge	Dimout	Upholstery	D	plain
3483/54	300	315	100% PL F.R.	Class 1(I), M1 (F), B1&B2(D) BS 5867 (UK),EN 13773 (EU), IMO, NFPA 701 (US)	No		Horizontal edge to edge	Dimout	Upholstery	D	plain
3483/55	300	315	100% PL F.R.	Class 1(I), M1 (F), B1&B2(D) BS 5867 (UK),EN 13773 (EU), IMO, NFPA 701 (US)	No		Horizontal edge to edge	Dimout	Upholstery	D	plain

All coefficients have a possible tolerance of +/- 5%
 Attention: colour shades may vary slightly from one dye-lot to another



Width



Flame retardant



Transparency



Leaded



Weight



Composition



Upholstery



Selvedge

MAINTENANCE

WASH IN MAX 30°, DO NOT BLEACH, DO NOT TUMBLE DRY, IRON ON LOW SETTING, CAN BE DRY CLEANED, DRIP DRY, SHRINKAGE AFTER FIRST WASH 0-2% FOR FURTHER INDICATIONS PLEASE CONSULT THE INDIVIDUAL PRODUCT SPECIFICATIONS IN THE ATELIER CATALOGUE.