



TESSUTI & SARTORIA

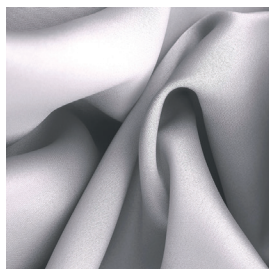
ATELIER 1963 - ARISTON F.R.

ARISTON F.R.

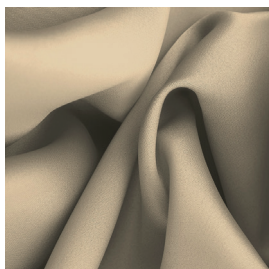
MOTTURA



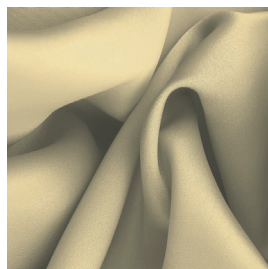
7106/01



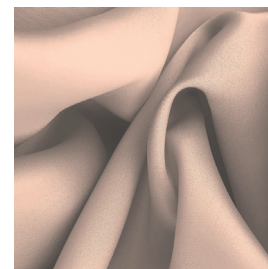
7106/02



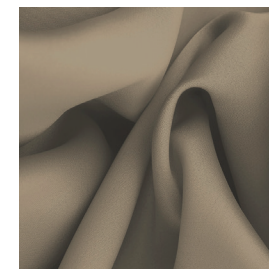
7106/03



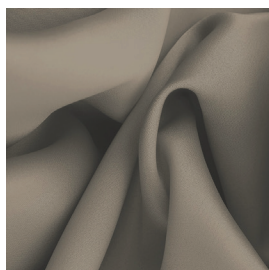
7106/04



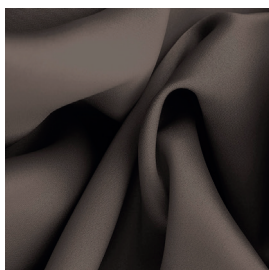
7106/05



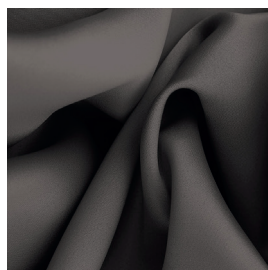
7106/06



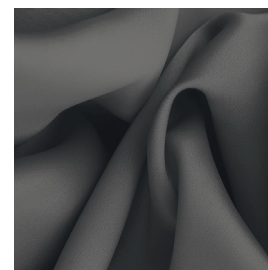
7106/07



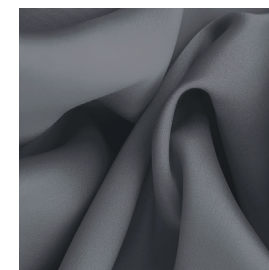
7106/08



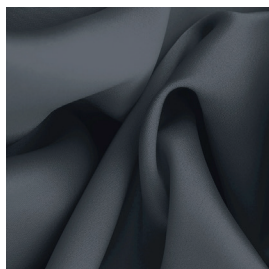
7106/09



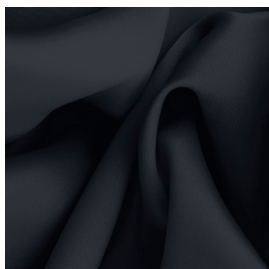
7106/10



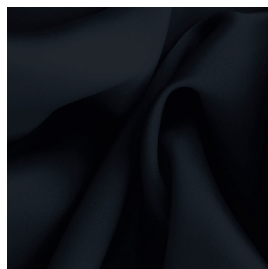
7106/11



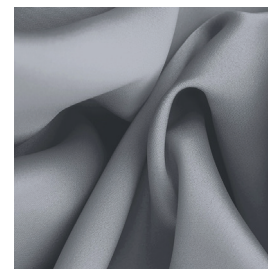
7106/12



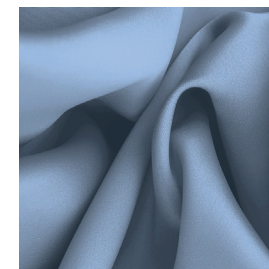
7106/13



7106/14



7106/15





TESSUTI & SARTORIA

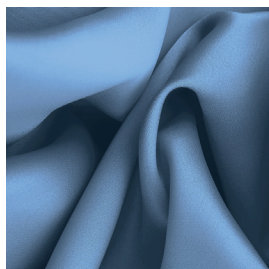
ATELIER 1963 - ARISTON F.R.

ARISTON F.R.

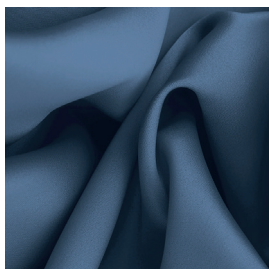
MOTTURA



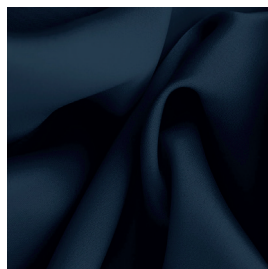
7106/16



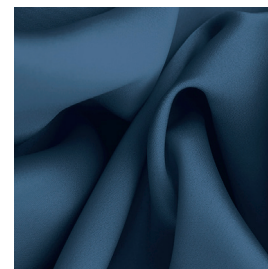
7106/17



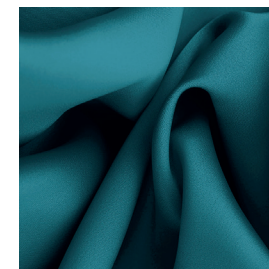
7106/18



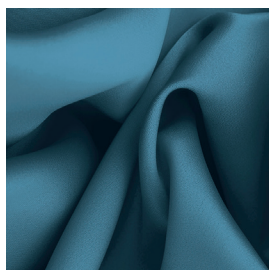
7106/19



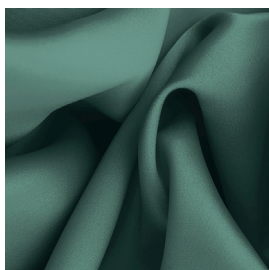
7106/20



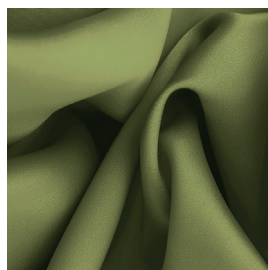
7106/21



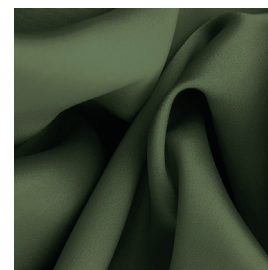
7106/22



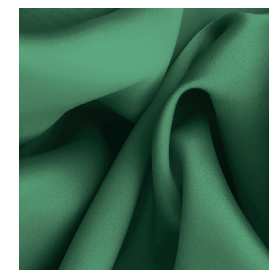
7106/23



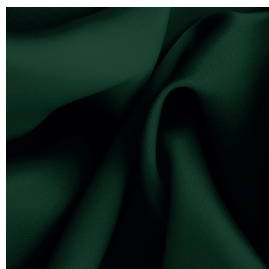
7106/24



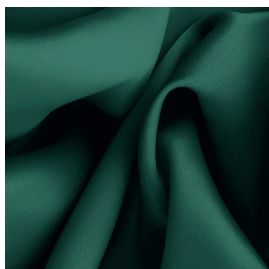
7106/25



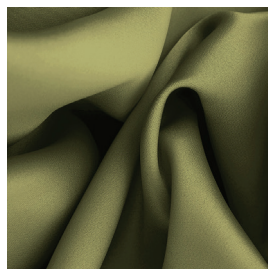
7106/26



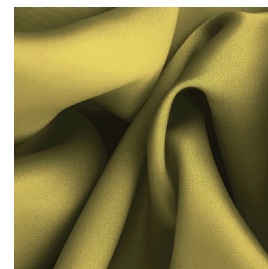
7106/27



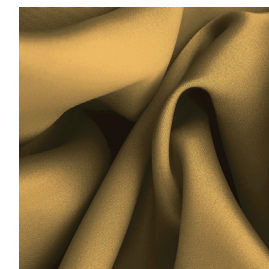
7106/28



7106/29



7106/30





TESSUTI & SARTORIA

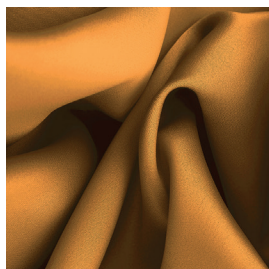
ATELIER 1963 - ARISTON F.R.

ARISTON F.R.

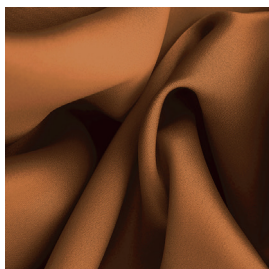
MOTTURA



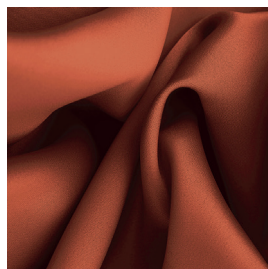
**7106/31**



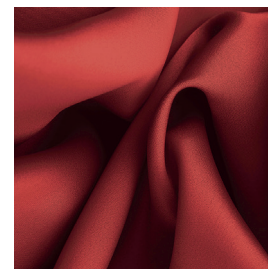
**7106/32**



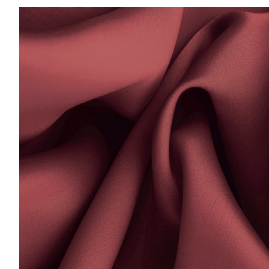
**7106/33**



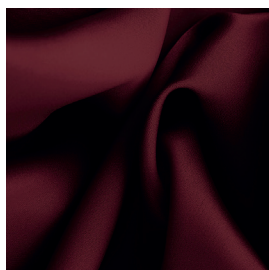
**7106/34**



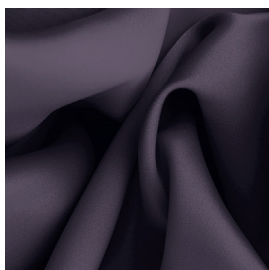
**7106/35**



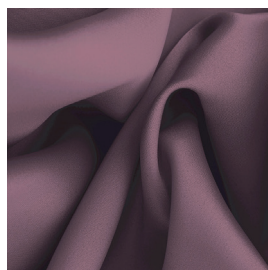
**7106/36**



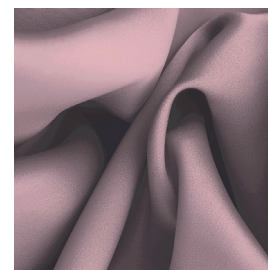
**7106/37**



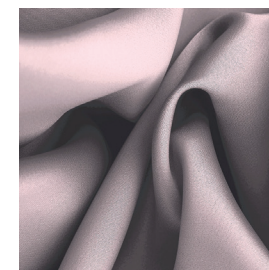
**7106/38**



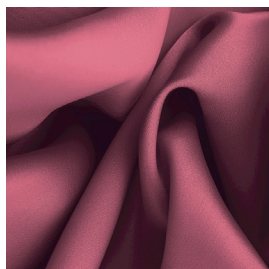
**7106/39**



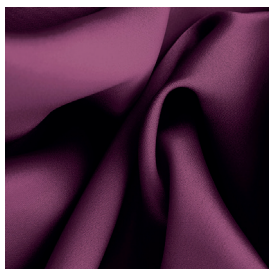
**7106/40**



**7106/41**



**7106/42**



**7106/43**



Ref.	 cm	 g/m <sup>2</sup>						Categoria Prezzo	Aspetto
7106/01	296	235	100% PL F.R.	Class 1(I), M1 (F), B1&B2(D) BS 5867 (UK),EN 13773 (EU), IMO	No	Verticale - soffitto/pavimento	Oscurante	B	Unito
7106/02	296	235	100% PL F.R.	Class 1(I), M1 (F), B1&B2(D) BS 5867 (UK),EN 13773 (EU), IMO	No	Verticale - soffitto/pavimento	Oscurante	B	Unito
7106/03	296	235	100% PL F.R.	Class 1(I), M1 (F), B1&B2(D) BS 5867 (UK),EN 13773 (EU), IMO	No	Verticale - soffitto/pavimento	Oscurante	B	Unito
7106/04	296	235	100% PL F.R.	Class 1(I), M1 (F), B1&B2(D) BS 5867 (UK),EN 13773 (EU), IMO	No	Verticale - soffitto/pavimento	Oscurante	B	Unito
7106/05	296	235	100% PL F.R.	Class 1(I), M1 (F), B1&B2(D) BS 5867 (UK),EN 13773 (EU), IMO	No	Verticale - soffitto/pavimento	Oscurante	B	Unito
7106/06	296	235	100% PL F.R.	Class 1(I), M1 (F), B1&B2(D) BS 5867 (UK),EN 13773 (EU), IMO	No	Verticale - soffitto/pavimento	Oscurante	B	Unito
7106/07	296	235	100% PL F.R.	Class 1(I), M1 (F), B1&B2(D) BS 5867 (UK),EN 13773 (EU), IMO	No	Verticale - soffitto/pavimento	Oscurante	B	Unito
7106/08	296	235	100% PL F.R.	Class 1(I), M1 (F), B1&B2(D) BS 5867 (UK),EN 13773 (EU), IMO	No	Verticale - soffitto/pavimento	Oscurante	B	Unito
7106/09	296	235	100% PL F.R.	Class 1(I), M1 (F), B1&B2(D) BS 5867 (UK),EN 13773 (EU), IMO	No	Verticale - soffitto/pavimento	Oscurante	B	Unito
7106/10	296	235	100% PL F.R.	Class 1(I), M1 (F), B1&B2(D) BS 5867 (UK),EN 13773 (EU), IMO	No	Verticale - soffitto/pavimento	Oscurante	B	Unito
7106/11	296	235	100% PL F.R.	Class 1(I), M1 (F), B1&B2(D) BS 5867 (UK),EN 13773 (EU), IMO	No	Verticale - soffitto/pavimento	Oscurante	B	Unito
7106/12	296	235	100% PL F.R.	Class 1(I), M1 (F), B1&B2(D) BS 5867 (UK),EN 13773 (EU), IMO	No	Verticale - soffitto/pavimento	Oscurante	B	Unito
7106/13	296	235	100% PL F.R.	Class 1(I), M1 (F), B1&B2(D) BS 5867 (UK),EN 13773 (EU), IMO	No	Verticale - soffitto/pavimento	Oscurante	B	Unito
7106/14	296	235	100% PL F.R.	Class 1(I), M1 (F), B1&B2(D) BS 5867 (UK),EN 13773 (EU), IMO	No	Verticale - soffitto/pavimento	Oscurante	B	Unito

Tutti i coefficienti potrebbero avere una tolleranza di +/- 5%  
 Attenzione: La tonalità dei colori può variare leggermente da lotto a lotto

Ref.	 cm	 g/m <sup>2</sup>						Categoria Prezzo	Aspetto
7106/15	296	235	100% PL F.R.	Class 1(I), M1 (F), B1&B2(D) BS 5867 (UK),EN 13773 (EU), IMO	No	Verticale - soffitto/pavimento	Oscurante	B	Unito
7106/16	296	235	100% PL F.R.	Class 1(I), M1 (F), B1&B2(D) BS 5867 (UK),EN 13773 (EU), IMO	No	Verticale - soffitto/pavimento	Oscurante	B	Unito
7106/17	296	235	100% PL F.R.	Class 1(I), M1 (F), B1&B2(D) BS 5867 (UK),EN 13773 (EU), IMO	No	Verticale - soffitto/pavimento	Oscurante	B	Unito
7106/18	296	235	100% PL F.R.	Class 1(I), M1 (F), B1&B2(D) BS 5867 (UK),EN 13773 (EU), IMO	No	Verticale - soffitto/pavimento	Oscurante	B	Unito
7106/19	296	235	100% PL F.R.	Class 1(I), M1 (F), B1&B2(D) BS 5867 (UK),EN 13773 (EU), IMO	No	Verticale - soffitto/pavimento	Oscurante	B	Unito
7106/20	296	235	100% PL F.R.	Class 1(I), M1 (F), B1&B2(D) BS 5867 (UK),EN 13773 (EU), IMO	No	Verticale - soffitto/pavimento	Oscurante	B	Unito
7106/21	296	235	100% PL F.R.	Class 1(I), M1 (F), B1&B2(D) BS 5867 (UK),EN 13773 (EU), IMO	No	Verticale - soffitto/pavimento	Oscurante	B	Unito
7106/22	296	235	100% PL F.R.	Class 1(I), M1 (F), B1&B2(D) BS 5867 (UK),EN 13773 (EU), IMO	No	Verticale - soffitto/pavimento	Oscurante	B	Unito
7106/23	296	235	100% PL F.R.	Class 1(I), M1 (F), B1&B2(D) BS 5867 (UK),EN 13773 (EU), IMO	No	Verticale - soffitto/pavimento	Oscurante	B	Unito
7106/24	296	235	100% PL F.R.	Class 1(I), M1 (F), B1&B2(D) BS 5867 (UK),EN 13773 (EU), IMO	No	Verticale - soffitto/pavimento	Oscurante	B	Unito
7106/25	296	235	100% PL F.R.	Class 1(I), M1 (F), B1&B2(D) BS 5867 (UK),EN 13773 (EU), IMO	No	Verticale - soffitto/pavimento	Oscurante	B	Unito
7106/26	296	235	100% PL F.R.	Class 1(I), M1 (F), B1&B2(D) BS 5867 (UK),EN 13773 (EU), IMO	No	Verticale - soffitto/pavimento	Oscurante	B	Unito
7106/27	296	235	100% PL F.R.	Class 1(I), M1 (F), B1&B2(D) BS 5867 (UK),EN 13773 (EU), IMO	No	Verticale - soffitto/pavimento	Oscurante	B	Unito
7106/28	296	235	100% PL F.R.	Class 1(I), M1 (F), B1&B2(D) BS 5867 (UK),EN 13773 (EU), IMO	No	Verticale - soffitto/pavimento	Oscurante	B	Unito

Tutti i coefficienti potrebbero avere una tolleranza di +/- 5%  
 Attenzione: La tonalità dei colori può variare leggermente da lotto a lotto

Ref.	 cm	 g/m <sup>2</sup>						Categoria Prezzo	Aspetto
7106/29	296	235	100% PL F.R.	Class 1(I), M1 (F), B1&B2(D) BS 5867 (UK),EN 13773 (EU), IMO	No	Verticale - soffitto/pavimento	Oscurante	B	Unito
7106/30	296	235	100% PL F.R.	Class 1(I), M1 (F), B1&B2(D) BS 5867 (UK),EN 13773 (EU), IMO	No	Verticale - soffitto/pavimento	Oscurante	B	Unito
7106/31	296	235	100% PL F.R.	Class 1(I), M1 (F), B1&B2(D) BS 5867 (UK),EN 13773 (EU), IMO	No	Verticale - soffitto/pavimento	Oscurante	B	Unito
7106/32	296	235	100% PL F.R.	Class 1(I), M1 (F), B1&B2(D) BS 5867 (UK),EN 13773 (EU), IMO	No	Verticale - soffitto/pavimento	Oscurante	B	Unito
7106/33	296	235	100% PL F.R.	Class 1(I), M1 (F), B1&B2(D) BS 5867 (UK),EN 13773 (EU), IMO	No	Verticale - soffitto/pavimento	Oscurante	B	Unito
7106/34	296	235	100% PL F.R.	Class 1(I), M1 (F), B1&B2(D) BS 5867 (UK),EN 13773 (EU), IMO	No	Verticale - soffitto/pavimento	Oscurante	B	Unito
7106/35	296	235	100% PL F.R.	Class 1(I), M1 (F), B1&B2(D) BS 5867 (UK),EN 13773 (EU), IMO	No	Verticale - soffitto/pavimento	Oscurante	B	Unito
7106/36	296	235	100% PL F.R.	Class 1(I), M1 (F), B1&B2(D) BS 5867 (UK),EN 13773 (EU), IMO	No	Verticale - soffitto/pavimento	Oscurante	B	Unito
7106/37	296	235	100% PL F.R.	Class 1(I), M1 (F), B1&B2(D) BS 5867 (UK),EN 13773 (EU), IMO	No	Verticale - soffitto/pavimento	Oscurante	B	Unito
7106/38	296	235	100% PL F.R.	Class 1(I), M1 (F), B1&B2(D) BS 5867 (UK),EN 13773 (EU), IMO	No	Verticale - soffitto/pavimento	Oscurante	B	Unito

Tutti i coefficienti potrebbero avere una tolleranza di +/- 5%  
 Attenzione: La tonalità dei colori può variare leggermente da lotto a lotto



TESSUTI &amp; SARTORIA



Larghezza



Ignifugo



Trasparenza



Piombato



Peso



Composizione



Imbottito



Cimosa

**MANUTENZIONE**

IN ACQUA A 30° MAX, NO CANDEGGIO, NO TAMBURO, FERRO A 1, SÌ A SECCO, STENDERE APPESO