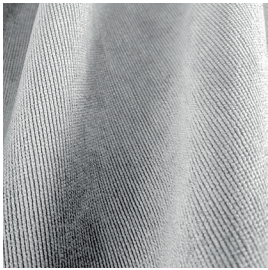


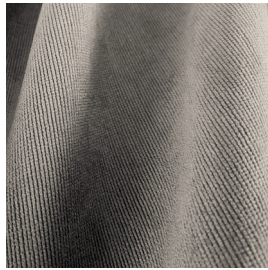
AFRODITE F.R.



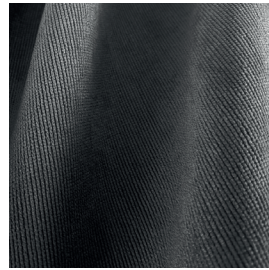
7118/01



7118/02



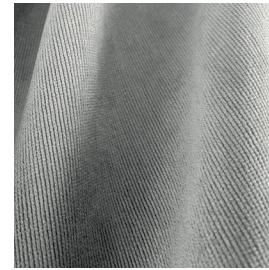
7118/03



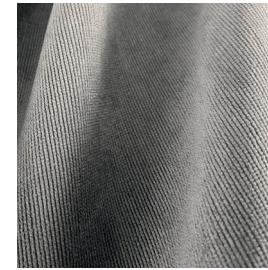
7118/04



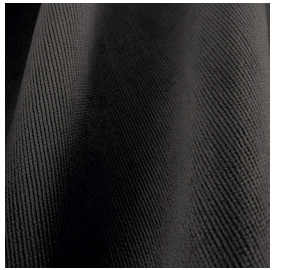
7118/05



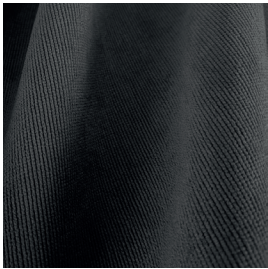
7118/06



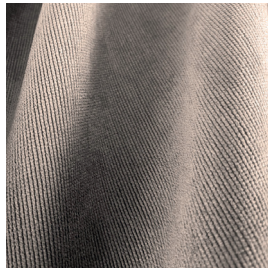
7118/07



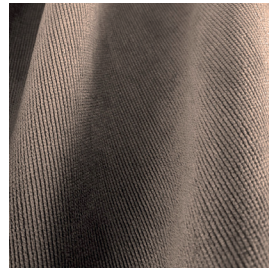
7118/08



7118/09



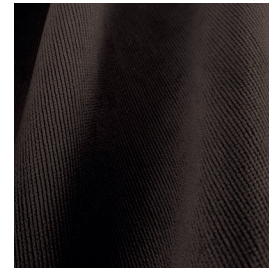
7118/10



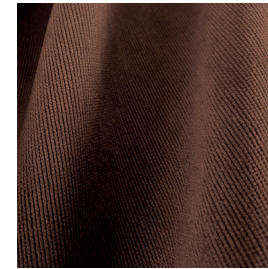
7118/11



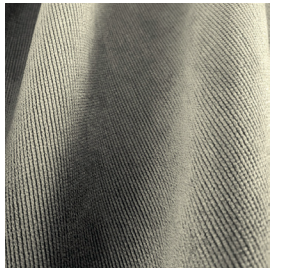
7118/12



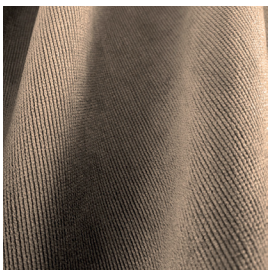
7118/13



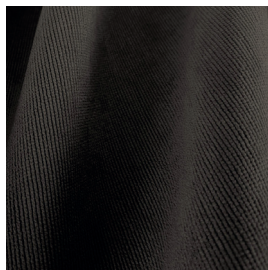
7118/14



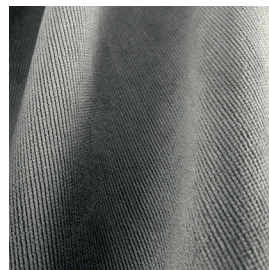
7118/15



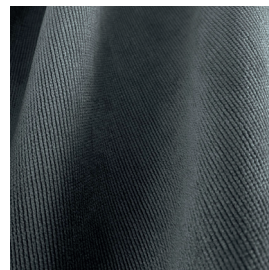
7118/16



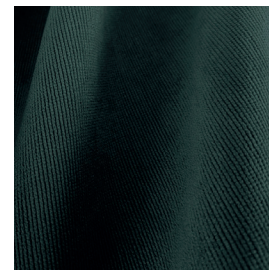
7118/17



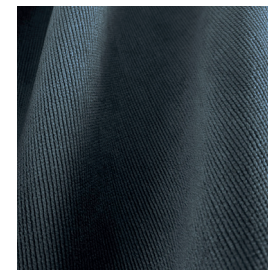
7118/18



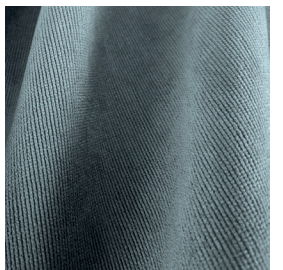
7118/19



7118/20



7118/21





TESSUTI & SARTORIA

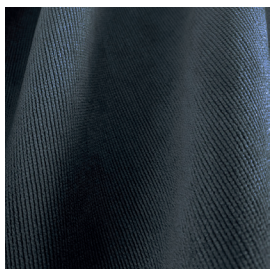
ATELIER 1963 - AFRODITE F.R.

AFRODITE F.R.

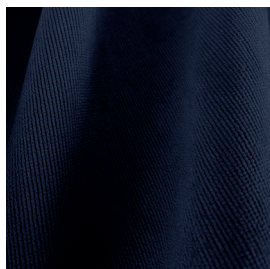
MOTTURA



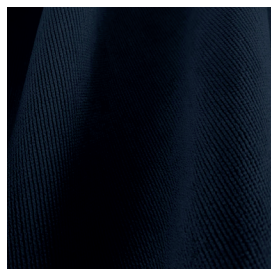
7118/22



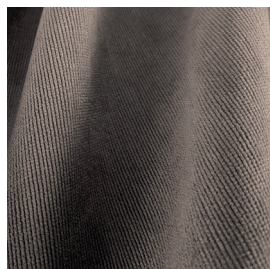
7118/23



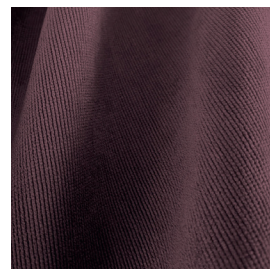
7118/24



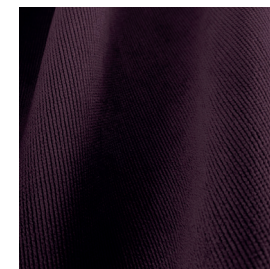
7118/25



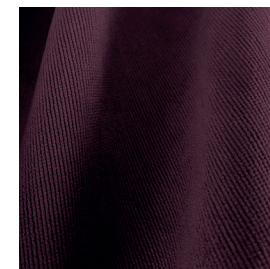
7118/26



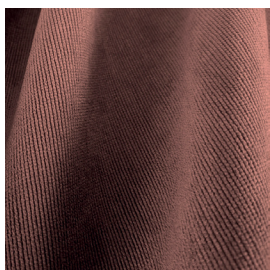
7118/27



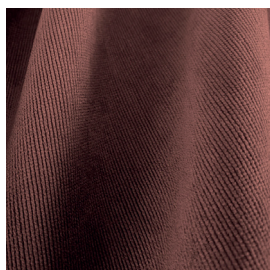
7118/28



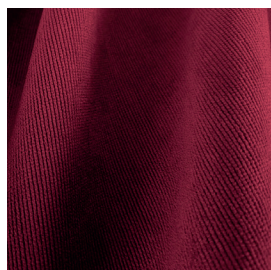
7118/29



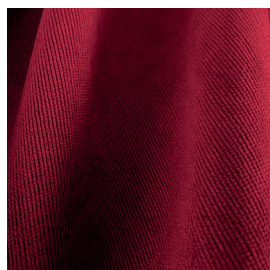
7118/30



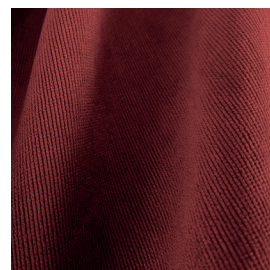
7118/31



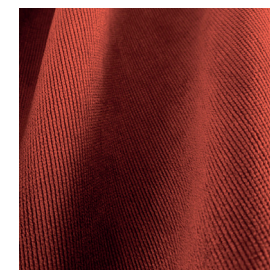
7118/32



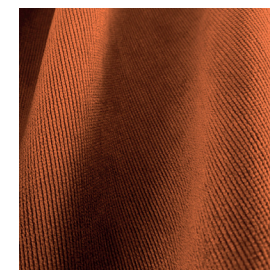
7118/33



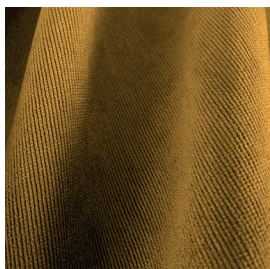
7118/34



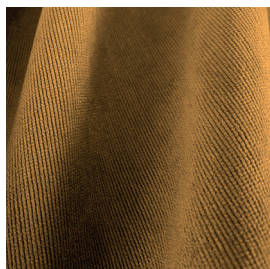
7118/35



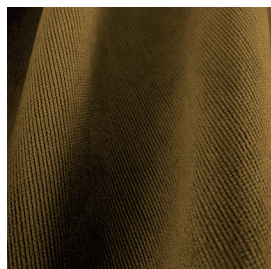
7118/36



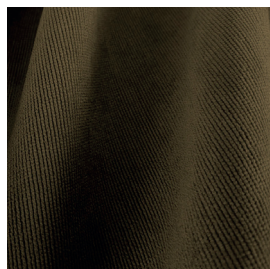
7118/37



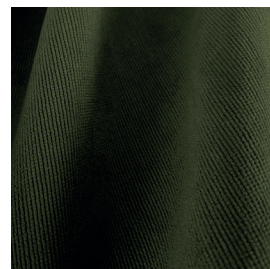
7118/38



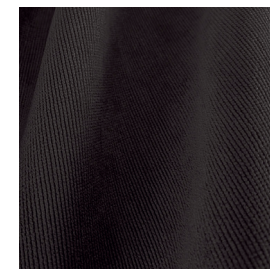
7118/39



7118/40










7118/41



Ref.	cm	g/m ²						Price category	Appearance
7118/01	300	375	100% PL F.R.	CLASS 1 (I), M1 (F), B1&B2 (D), IMO	No	Horizontal edge to edge	Dimout	D	plain
7118/02	300	375	100% PL F.R.	CLASS 1 (I), M1 (F), B1&B2 (D), IMO	No	Horizontal edge to edge	Dimout	D	plain
7118/03	300	375	100% PL F.R.	CLASS 1 (I), M1 (F), B1&B2 (D), IMO	No	Horizontal edge to edge	Dimout	D	plain
7118/04	300	375	100% PL F.R.	CLASS 1 (I), M1 (F), B1&B2 (D), IMO	No	Horizontal edge to edge	Dimout	D	plain
7118/05	300	375	100% PL F.R.	CLASS 1 (I), M1 (F), B1&B2 (D), IMO	No	Horizontal edge to edge	Dimout	D	plain
7118/06	300	375	100% PL F.R.	CLASS 1 (I), M1 (F), B1&B2 (D), IMO	No	Horizontal edge to edge	Dimout	D	plain
7118/07	300	375	100% PL F.R.	CLASS 1 (I), M1 (F), B1&B2 (D), IMO	No	Horizontal edge to edge	Dimout	D	plain
7118/08	300	375	100% PL F.R.	CLASS 1 (I), M1 (F), B1&B2 (D), IMO	No	Horizontal edge to edge	Dimout	D	plain
7118/09	300	375	100% PL F.R.	CLASS 1 (I), M1 (F), B1&B2 (D), IMO	No	Horizontal edge to edge	Dimout	D	plain
7118/10	300	375	100% PL F.R.	CLASS 1 (I), M1 (F), B1&B2 (D), IMO	No	Horizontal edge to edge	Dimout	D	plain
7118/11	300	375	100% PL F.R.	CLASS 1 (I), M1 (F), B1&B2 (D), IMO	No	Horizontal edge to edge	Dimout	D	plain
7118/12	300	375	100% PL F.R.	CLASS 1 (I), M1 (F), B1&B2 (D), IMO	No	Horizontal edge to edge	Dimout	D	plain
7118/13	300	375	100% PL F.R.	CLASS 1 (I), M1 (F), B1&B2 (D), IMO	No	Horizontal edge to edge	Dimout	D	plain
7118/14	300	375	100% PL F.R.	CLASS 1 (I), M1 (F), B1&B2 (D), IMO	No	Horizontal edge to edge	Dimout	D	plain
7118/15	300	375	100% PL F.R.	CLASS 1 (I), M1 (F), B1&B2 (D), IMO	No	Horizontal edge to edge	Dimout	D	plain
7118/16	300	375	100% PL F.R.	CLASS 1 (I), M1 (F), B1&B2 (D), IMO	No	Horizontal edge to edge	Dimout	D	plain

All coefficients have a possible tolerance of +/- 5%
Attention: colour shades may vary slightly from one dye-lot to another

Ref.	 cm	 g/m ²						Price category	Appearance
7118/17	300	375	100% PL F.R.	CLASS 1 (I), M1 (F), B1&B2 (D), IMO	No	Horizontal edge to edge	Dimout	D	plain
7118/18	300	375	100% PL F.R.	CLASS 1 (I), M1 (F), B1&B2 (D), IMO	No	Horizontal edge to edge	Dimout	D	plain
7118/19	300	375	100% PL F.R.	CLASS 1 (I), M1 (F), B1&B2 (D), IMO	No	Horizontal edge to edge	Dimout	D	plain
7118/20	300	375	100% PL F.R.	CLASS 1 (I), M1 (F), B1&B2 (D), IMO	No	Horizontal edge to edge	Dimout	D	plain
7118/21	300	375	100% PL F.R.	CLASS 1 (I), M1 (F), B1&B2 (D), IMO	No	Horizontal edge to edge	Dimout	D	plain
7118/22	300	375	100% PL F.R.	CLASS 1 (I), M1 (F), B1&B2 (D), IMO	No	Horizontal edge to edge	Dimout	D	plain
7118/23	300	375	100% PL F.R.	CLASS 1 (I), M1 (F), B1&B2 (D), IMO	No	Horizontal edge to edge	Dimout	D	plain
7118/24	300	375	100% PL F.R.	CLASS 1 (I), M1 (F), B1&B2 (D), IMO	No	Horizontal edge to edge	Dimout	D	plain
7118/25	300	375	100% PL F.R.	CLASS 1 (I), M1 (F), B1&B2 (D), IMO	No	Horizontal edge to edge	Dimout	D	plain
7118/26	300	375	100% PL F.R.	CLASS 1 (I), M1 (F), B1&B2 (D), IMO	No	Horizontal edge to edge	Dimout	D	plain
7118/27	300	375	100% PL F.R.	CLASS 1 (I), M1 (F), B1&B2 (D), IMO	No	Horizontal edge to edge	Dimout	D	plain
7118/28	300	375	100% PL F.R.	CLASS 1 (I), M1 (F), B1&B2 (D), IMO	No	Horizontal edge to edge	Dimout	D	plain
7118/29	300	375	100% PL F.R.	CLASS 1 (I), M1 (F), B1&B2 (D), IMO	No	Horizontal edge to edge	Dimout	D	plain
7118/30	300	375	100% PL F.R.	CLASS 1 (I), M1 (F), B1&B2 (D), IMO	No	Horizontal edge to edge	Dimout	D	plain
7118/31	300	375	100% PL F.R.	CLASS 1 (I), M1 (F), B1&B2 (D), IMO	No	Horizontal edge to edge	Dimout	D	plain
7118/32	300	375	100% PL F.R.	CLASS 1 (I), M1 (F), B1&B2 (D), IMO	No	Horizontal edge to edge	Dimout	D	plain

All coefficients have a possible tolerance of +/- 5%
Attention: colour shades may vary slightly from one dye-lot to another

Ref.	 cm	 g/m ²						Price category	Appearance	
7118/33	300	375	100% PL F.R.	CLASS 1 (I), M1 (F), B1&B2 (D), IMO	No		Horizontal edge to edge	Dimout	D	plain
7118/34	300	375	100% PL F.R.	CLASS 1 (I), M1 (F), B1&B2 (D), IMO	No		Horizontal edge to edge	Dimout	D	plain
7118/35	300	375	100% PL F.R.	CLASS 1 (I), M1 (F), B1&B2 (D), IMO	No		Horizontal edge to edge	Dimout	D	plain
7118/36	300	375	100% PL F.R.	CLASS 1 (I), M1 (F), B1&B2 (D), IMO	No		Horizontal edge to edge	Dimout	D	plain
7118/37	300	375	100% PL F.R.	CLASS 1 (I), M1 (F), B1&B2 (D), IMO	No		Horizontal edge to edge	Dimout	D	plain
7118/38	300	375	100% PL F.R.	CLASS 1 (I), M1 (F), B1&B2 (D), IMO	No		Horizontal edge to edge	Dimout	D	plain
7118/39	300	375	100% PL F.R.	CLASS 1 (I), M1 (F), B1&B2 (D), IMO	No		Horizontal edge to edge	Dimout	D	plain
7118/40	300	375	100% PL F.R.	CLASS 1 (I), M1 (F), B1&B2 (D), IMO	No		Horizontal edge to edge	Dimout	D	plain
7118/41	300	375	100% PL F.R.	CLASS 1 (I), M1 (F), B1&B2 (D), IMO	No		Horizontal edge to edge	Dimout	D	plain

All coefficients have a possible tolerance of +/- 5%
Attention: colour shades may vary slightly from one dye-lot to another



TESSUTI & SARTORIA



Width



Weight



Flame retardant



Composition



Transparency



Upholstery



Leaded



Selvege

MAINTENANCE

WASH IN MAX 30°, DO NOT BLEACH, DO NOT TUMBLE DRY, IRON ON LOW SETTING, CAN BE DRY CLEANED, DRIP DRY, SHRINKAGE AFTER FIRST WASH 0-2% FOR FURTHER INDICATIONS PLEASE CONSULT THE INDIVIDUAL PRODUCT SPECIFICATIONS IN THE ATELIER CATALOGUE.