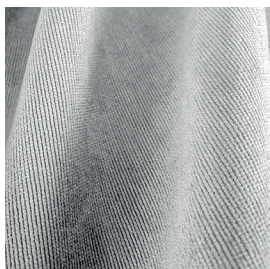


AFRODITE F.R.



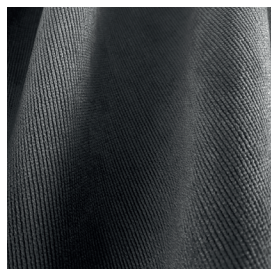
7118/01



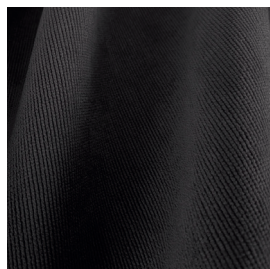
7118/02



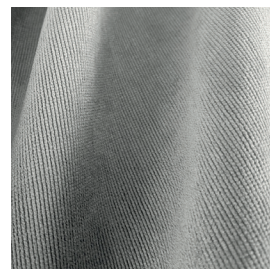
7118/03



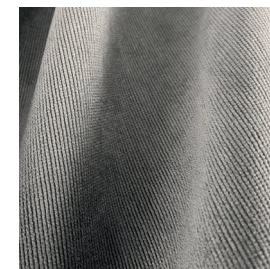
7118/04



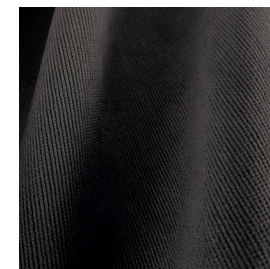
7118/05



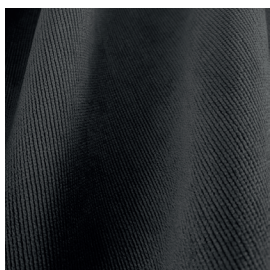
7118/06



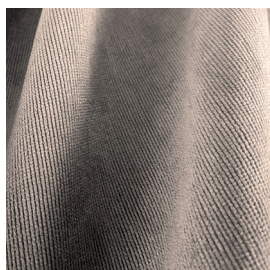
7118/07



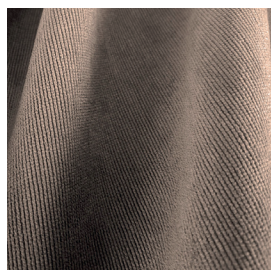
7118/08



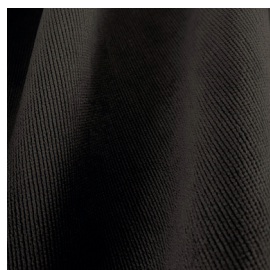
7118/09



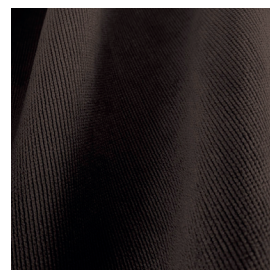
7118/10



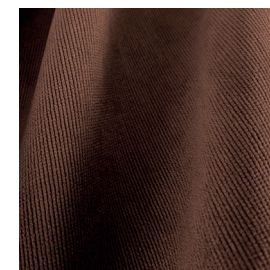
7118/11



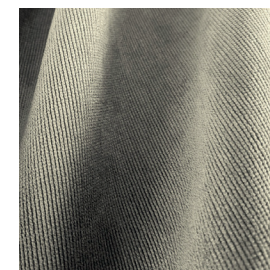
7118/12



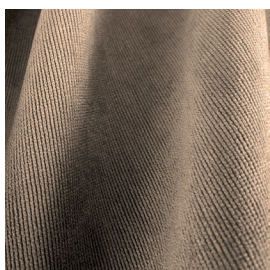
7118/13



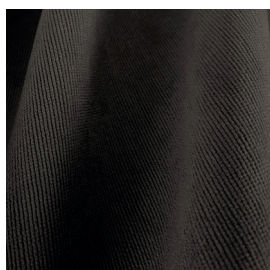
7118/14



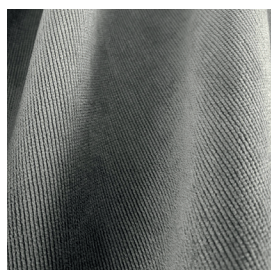
7118/15



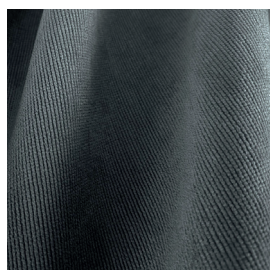
7118/16



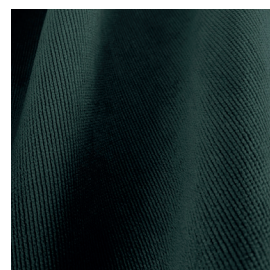
7118/17



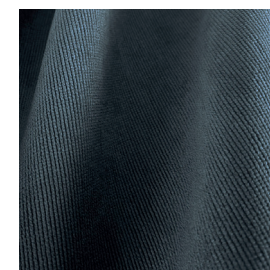
7118/18



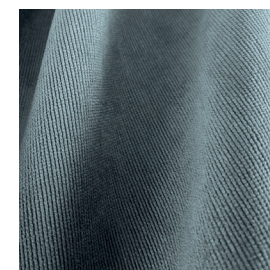
7118/19



7118/20



7118/21





TESSUTI & SARTORIA

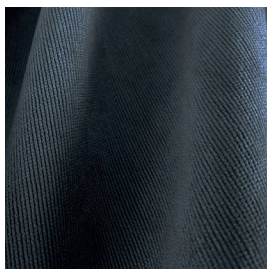
ATELIER 1963 - AFRODITE F.R.

# AFRODITE F.R.

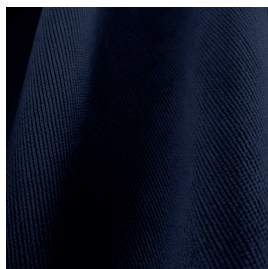
MOTTURA



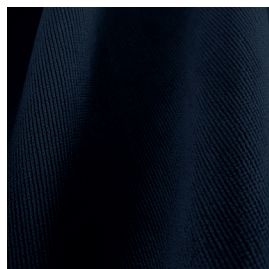
7118/22



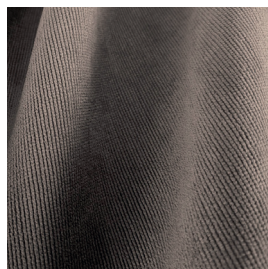
7118/23



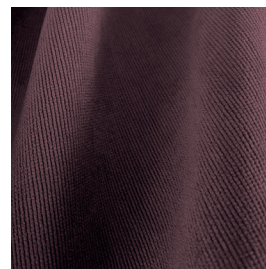
7118/24



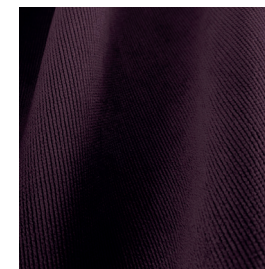
7118/25



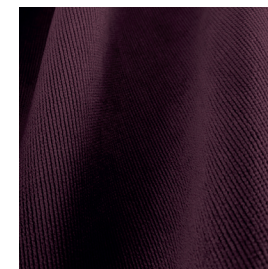
7118/26



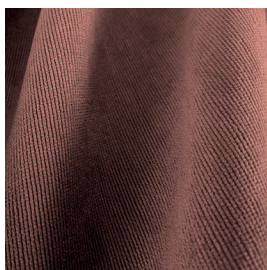
7118/27



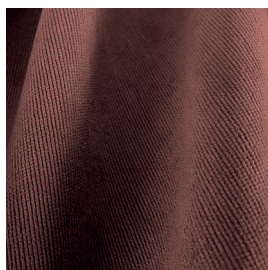
7118/28



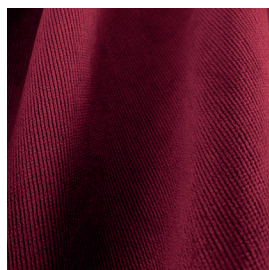
7118/29



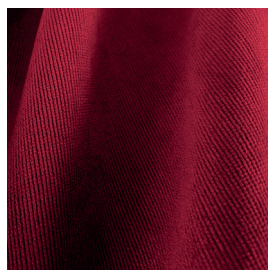
7118/30



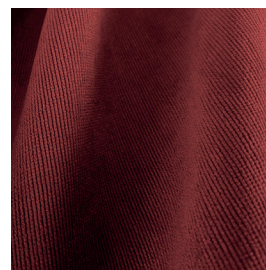
7118/31



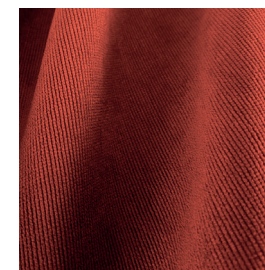
7118/32



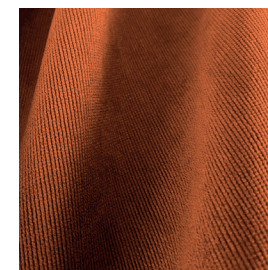
7118/33



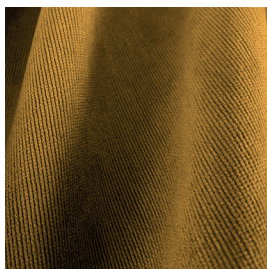
7118/34



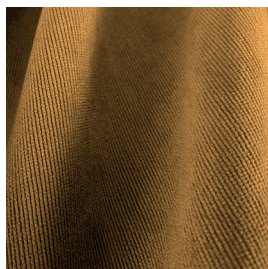
7118/35



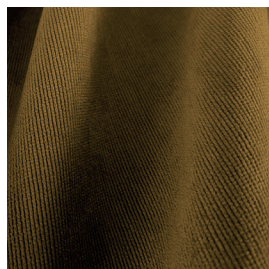
7118/36



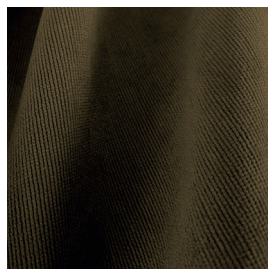
7118/37



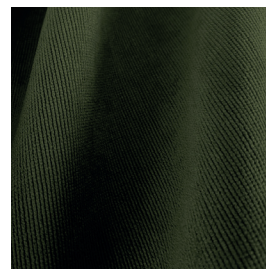
7118/38



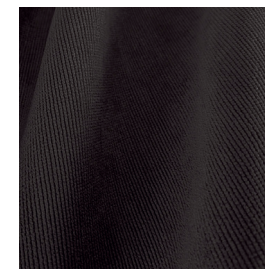
7118/39






7118/40



7118/41



Ref.	 cm	 g/m <sup>2</sup>						Categoria Prezzo	Aspetto
7118/01	300	375	100% PL F.R.	CLASS 1 (I), M1 (F), B1&B2 (D), IMO	No	Orizzontale - ai lati	Oscurante	D	Unito
7118/02	300	375	100% PL F.R.	CLASS 1 (I), M1 (F), B1&B2 (D), IMO	No	Orizzontale - ai lati	Oscurante	D	Unito
7118/03	300	375	100% PL F.R.	CLASS 1 (I), M1 (F), B1&B2 (D), IMO	No	Orizzontale - ai lati	Oscurante	D	Unito
7118/04	300	375	100% PL F.R.	CLASS 1 (I), M1 (F), B1&B2 (D), IMO	No	Orizzontale - ai lati	Oscurante	D	Unito
7118/05	300	375	100% PL F.R.	CLASS 1 (I), M1 (F), B1&B2 (D), IMO	No	Orizzontale - ai lati	Oscurante	D	Unito
7118/06	300	375	100% PL F.R.	CLASS 1 (I), M1 (F), B1&B2 (D), IMO	No	Orizzontale - ai lati	Oscurante	D	Unito
7118/07	300	375	100% PL F.R.	CLASS 1 (I), M1 (F), B1&B2 (D), IMO	No	Orizzontale - ai lati	Oscurante	D	Unito
7118/08	300	375	100% PL F.R.	CLASS 1 (I), M1 (F), B1&B2 (D), IMO	No	Orizzontale - ai lati	Oscurante	D	Unito
7118/09	300	375	100% PL F.R.	CLASS 1 (I), M1 (F), B1&B2 (D), IMO	No	Orizzontale - ai lati	Oscurante	D	Unito
7118/10	300	375	100% PL F.R.	CLASS 1 (I), M1 (F), B1&B2 (D), IMO	No	Orizzontale - ai lati	Oscurante	D	Unito
7118/11	300	375	100% PL F.R.	CLASS 1 (I), M1 (F), B1&B2 (D), IMO	No	Orizzontale - ai lati	Oscurante	D	Unito
7118/12	300	375	100% PL F.R.	CLASS 1 (I), M1 (F), B1&B2 (D), IMO	No	Orizzontale - ai lati	Oscurante	D	Unito
7118/13	300	375	100% PL F.R.	CLASS 1 (I), M1 (F), B1&B2 (D), IMO	No	Orizzontale - ai lati	Oscurante	D	Unito
7118/14	300	375	100% PL F.R.	CLASS 1 (I), M1 (F), B1&B2 (D), IMO	No	Orizzontale - ai lati	Oscurante	D	Unito
7118/15	300	375	100% PL F.R.	CLASS 1 (I), M1 (F), B1&B2 (D), IMO	No	Orizzontale - ai lati	Oscurante	D	Unito
7118/16	300	375	100% PL F.R.	CLASS 1 (I), M1 (F), B1&B2 (D), IMO	No	Orizzontale - ai lati	Oscurante	D	Unito
7118/17	300	375	100% PL F.R.	CLASS 1 (I), M1 (F), B1&B2 (D), IMO	No	Orizzontale - ai lati	Oscurante	D	Unito
7118/18	300	375	100% PL F.R.	CLASS 1 (I), M1 (F), B1&B2 (D), IMO	No	Orizzontale - ai lati	Oscurante	D	Unito

Tutti i coefficienti potrebbero avere una tolleranza di +/- 5%  
 Attenzione: La tonalità dei colori può variare leggermente da lotto a lotto

Ref.	 cm	 g/m <sup>2</sup>						Categoria Prezzo	Aspetto
7118/19	300	375	100% PL F.R.	CLASS 1 (I), M1 (F), B1&B2 (D), IMO	No	Orizzontale - ai lati	Oscurante	D	Unito
7118/20	300	375	100% PL F.R.	CLASS 1 (I), M1 (F), B1&B2 (D), IMO	No	Orizzontale - ai lati	Oscurante	D	Unito
7118/21	300	375	100% PL F.R.	CLASS 1 (I), M1 (F), B1&B2 (D), IMO	No	Orizzontale - ai lati	Oscurante	D	Unito
7118/22	300	375	100% PL F.R.	CLASS 1 (I), M1 (F), B1&B2 (D), IMO	No	Orizzontale - ai lati	Oscurante	D	Unito
7118/23	300	375	100% PL F.R.	CLASS 1 (I), M1 (F), B1&B2 (D), IMO	No	Orizzontale - ai lati	Oscurante	D	Unito
7118/24	300	375	100% PL F.R.	CLASS 1 (I), M1 (F), B1&B2 (D), IMO	No	Orizzontale - ai lati	Oscurante	D	Unito
7118/25	300	375	100% PL F.R.	CLASS 1 (I), M1 (F), B1&B2 (D), IMO	No	Orizzontale - ai lati	Oscurante	D	Unito
7118/26	300	375	100% PL F.R.	CLASS 1 (I), M1 (F), B1&B2 (D), IMO	No	Orizzontale - ai lati	Oscurante	D	Unito
7118/27	300	375	100% PL F.R.	CLASS 1 (I), M1 (F), B1&B2 (D), IMO	No	Orizzontale - ai lati	Oscurante	D	Unito
7118/28	300	375	100% PL F.R.	CLASS 1 (I), M1 (F), B1&B2 (D), IMO	No	Orizzontale - ai lati	Oscurante	D	Unito
7118/29	300	375	100% PL F.R.	CLASS 1 (I), M1 (F), B1&B2 (D), IMO	No	Orizzontale - ai lati	Oscurante	D	Unito
7118/30	300	375	100% PL F.R.	CLASS 1 (I), M1 (F), B1&B2 (D), IMO	No	Orizzontale - ai lati	Oscurante	D	Unito
7118/31	300	375	100% PL F.R.	CLASS 1 (I), M1 (F), B1&B2 (D), IMO	No	Orizzontale - ai lati	Oscurante	D	Unito
7118/32	300	375	100% PL F.R.	CLASS 1 (I), M1 (F), B1&B2 (D), IMO	No	Orizzontale - ai lati	Oscurante	D	Unito
7118/33	300	375	100% PL F.R.	CLASS 1 (I), M1 (F), B1&B2 (D), IMO	No	Orizzontale - ai lati	Oscurante	D	Unito
7118/34	300	375	100% PL F.R.	CLASS 1 (I), M1 (F), B1&B2 (D), IMO	No	Orizzontale - ai lati	Oscurante	D	Unito

Tutti i coefficienti potrebbero avere una tolleranza di +/- 5%  
 Attenzione: La tonalità dei colori può variare leggermente da lotto a lotto

Ref.	 cm	 g/m <sup>2</sup>						Categoria Prezzo	Aspetto
7118/35	300	375	100% PL F.R.	CLASS 1 (I), M1 (F), B1&B2 (D), IMO	No	Orizzontale - ai lati	Oscurante	D	Unito
7118/36	300	375	100% PL F.R.	CLASS 1 (I), M1 (F), B1&B2 (D), IMO	No	Orizzontale - ai lati	Oscurante	D	Unito
7118/37	300	375	100% PL F.R.	CLASS 1 (I), M1 (F), B1&B2 (D), IMO	No	Orizzontale - ai lati	Oscurante	D	Unito
7118/38	300	375	100% PL F.R.	CLASS 1 (I), M1 (F), B1&B2 (D), IMO	No	Orizzontale - ai lati	Oscurante	D	Unito
7118/39	300	375	100% PL F.R.	CLASS 1 (I), M1 (F), B1&B2 (D), IMO	No	Orizzontale - ai lati	Oscurante	D	Unito
7118/40	300	375	100% PL F.R.	CLASS 1 (I), M1 (F), B1&B2 (D), IMO	No	Orizzontale - ai lati	Oscurante	D	Unito
7118/41	300	375	100% PL F.R.	CLASS 1 (I), M1 (F), B1&B2 (D), IMO	No	Orizzontale - ai lati	Oscurante	D	Unito

Tutti i coefficienti potrebbero avere una tolleranza di +/- 5%  
 Attenzione: La tonalità dei colori può variare leggermente da lotto a lotto



TESSUTI &amp; SARTORIA



Larghezza



Peso



Ignifugo



Composizione



Trasparenza



Imbottito



Piombato



Cimosa

**MANUTENZIONE**

IN ACQUA A 30° MAX, NO  
 CANDEGGIO, NO TAMBURRO,  
 FERRO A 1, SÌ A SECCO,  
 STENDERE APPESO